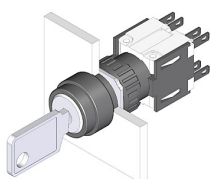


# EAO – Your Expert Partner for Human Machine Interfaces

## 51-374.F22D - Keylock switch 3 positions

### 51-374.F22D - Keylock switch 3 positions



*Attention: The preview is based on a sample product. This can differ from your current configuration.*

#### Mounting

Mounting cut-out	Ø 16 mm
Design	raised

#### Front

Front dimension	Ø 18 mm
Front shape	round

#### Other Attributes

Weight	0,025 kg
--------	----------

#### Operating-/Indication part

Switching angle	
-----------------	--

#### IP-Rating

Front protection	IP65
------------------	------

#### Connection Method

Terminal	Solder 2.8 x 0.5 mm
----------	---------------------

#### Actuator

Switching action	Momentary - Rest(a) - Momentary
------------------	---------------------------------

#### Switching element

Rotary positions	3
Switching system	Snap-action switching element
Switching current	5 A
Contacts	2 NC + 2 NO
Contact material	
Switching voltage	250 V AC

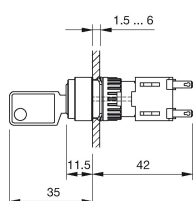
#### Function

Keylock switch	
----------------	--

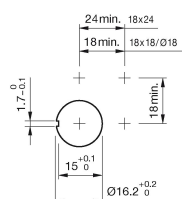
# EAO – Your Expert Partner for Human Machine Interfaces

## 51-374.F22D - Keylock switch 3 positions

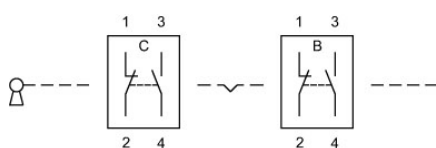
### Dimensions



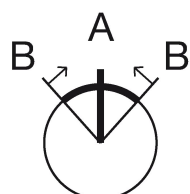
### Mounting cut-outs



### Wiring diagram



### Switching positions



### Additional information

Standard lock: DOM 311

Two keys are supplied with each key lock switch

Optional lock numbers on request

### Legend

Contacts: NC = Normally closed, NO = Normally open

Switching action: A = Rest, B = Momentary