

# 920-0003-01 - 20 Mechanical Bridges to Physically Connect Schmartboards' Together

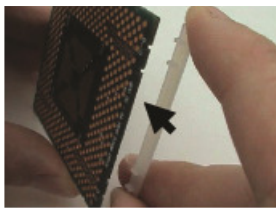


Figure 1 – Schmart mechanical bridge being connected to a SchmartBOARD™.

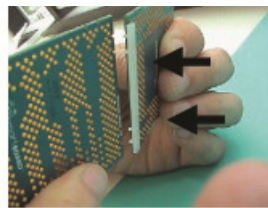


Figure 2 – 2<sup>nd</sup> SchmartBOARD™ connected to the 1<sup>st</sup> SchmartBOARD™ via a Schmart mechanical bridge

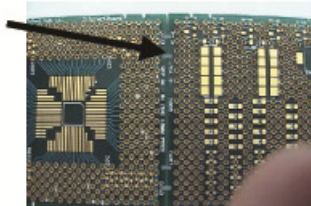


Figure 3 – Top View of 2 SchmartBOARDS™ connected via a Schmart mechanical bridge  
(A dab of Glue such as KrazyGlue can be put on the top of the board where the mechanical bridge shows through to make board rigid)

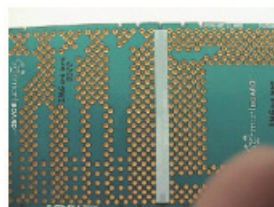


Figure 4 – Bottom View of 2 SchmartBOARDS™ connected via a Schmart mechanical bridge

## Working With Schmartboard Mechanical Bridges(SchmartBridges)

### Step 1 Select Boards

Select the boards that you will need for the project. A detailed description is available on the Schmartboard website.

### Step 2 Connect Components

Solder the components to each board.

Tip- Segment your project into blocks to take advantage of the pre-routed traces on Schmartboard™, this minimizes the number of wires needed on each Schmartboard™.

### Step 3

#### Connect Boards

Using the mechanical bridge connect the boards together. You will notice two slots on each side of the Schmartboard™. The bridges have two notches that fit the slots on the boards.

### Step 4

#### Connect Wires

Connect the wires. Schmartboard offers wires and headers in various lengths, colors and genders for this purpose. Use the headers to connect the wires.

### Step 5

Test and make modifications as needed. You can easily remove and replace the bridges as needed.

# Schmartboard Accessory Family



Schmartboard, Inc.  
37423 Fremont Blvd.  
Fremont, CA 94536

510-744-9900(P)  
510-744-9909(F)  
<http://www.schmartboard.com>  
<http://www.facebook.com/Schmartboard>  
<http://www.twitter.com/Schmartboard>