

D
Dimensioning and tolerancing per ASME Y14.5M-2009
C

B

A

D

C

B


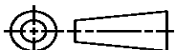
A

4		3		2		1							
THIS DRAWING IS UNPUBLISHED.		RELEASED FOR PUBLICATION		LOC	DIST	REVISIONS							
© COPYRIGHT		ALL RIGHTS RESERVED.				P	LTR	DESCRIPTION			DATE	DWN	APVD
							A1	ECR-12-015651			04SEPT2012	MY	TE


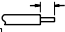


REPLACED BY OCEAN STYLE APPLICATOR PART NUMBER 2151045-5

FOR REPLACEMENT PARTS FOR APPLICATOR 2034014
REFER TO ADDITIONAL PAGE(S). SPARE PARTS KIT (IF LISTED)
WILL REMAIN AVAILABLE.

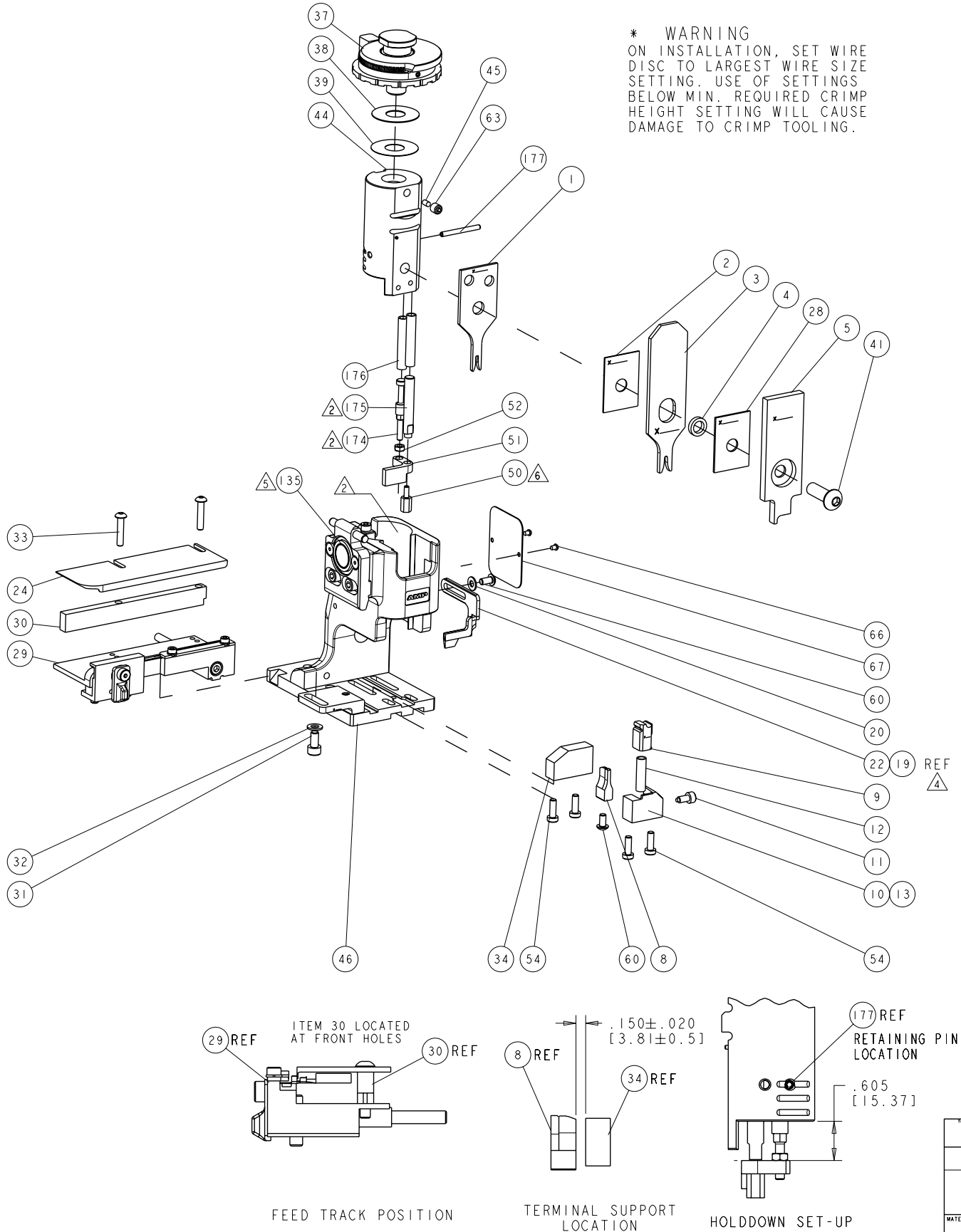
THE REPLACEMENT OCEAN STYLE APPLICATOR HAS THE
SAME TERMINATOR/PRESS INTERFACE AS APPLICATOR
2034014

THIS DRAWING IS A CONTROLLED DOCUMENT.		DWN M. YOUNGER		<div>TE Connectivity</div>							
		CHK M. YOUNGER									
DIMENSIONS:		TOLERANCES UNLESS OTHERWISE SPECIFIED:		APVD T. ELBIN		NAME SIDE FEED SYSTEM III APPLICATOR WITH FINE ADJUST					
				PRODUCT SPEC							
				APPLICATION SPEC							
		MATERIAL		FINISH		WEIGHT		SIZE	CAGE CODE	DRAWING NO	RESTRICTED TO
						A 3			©- 2034014		
				CUSTOMER DRAWING				SCALE		SHEET 1 OF 2	REV A1

Dimensioning and tolerancing per ASME Y14.5M-2009

8		7	
THIS DRAWING IS UNPUBLISHED.		RELEASED FOR PUBLICATION	
20		20	
© COPYRIGHT 20 BY TYCO ELECTRONICS CORPORATION. ALL RIGHTS RESERVED.			
PART NUMBER	REV	DESCRIPTION	PROGRAMMED MEMORY CHIP
2034014-1	A	CUTS CARRIER	8-2034014-1
2034014-6	A	CONTINUOUS CARRIER	8-2034014-6
7-2034014-1	A	-1 AND SPARE PARTS	9-2034014-1
7-2034014-6	A	-6 AND SPARE PARTS	9-2034014-6
7-2034014-7	A	SPARE PARTS KIT	-
APPLICATOR DATA			
CRIMP	SIZE	TYPE	
WIRE	1.57mm [.062]	F	
INSUL	2.29mm [.090]	O	
APPL INSTRUCTIONS			
408-10135			
TERMINAL DATA: TE TERMINAL TYCO ELECTRONICS CRIMP SPEC			
TERMINAL NAME: MICRO POWER QUADLOCK PIN/SKT CONTACT			
WIRE STRIP LENGTH			INSULATION DIAMETER RANGE
3.2-3.8 mm [.125-.149 IN]			1.20-1.60mm [.047-.062 IN]
TERMINAL APPL SPEC		114-18141	-
TERMINALS APPLIED			
			
968679-2	968679-5	968678-2	968678-5

WIRE SIZE	CRIMP HEIGHT mm[INCH]	REF SETTING*
0.5mm ²	1.15±.03 [.045±0012]	C0
0.35mm ²	1.08±.03 [.043±0012]	C5



* WARNING
ON INSTALLATION, SET WIRE
DISC TO LARGEST WIRE SIZE
SETTING. USE OF SETTINGS
BELOW MIN. REQUIRED CRIMP
HEIGHT SETTING WILL CAUSE
DAMAGE TO CRIMP TOOLING.

-	1	1	1	1	1	1-993111-6	PIN, SLOTTED SPRING 3.0 X 30.0	177
-	2	2	2	2	2	3-22280-7	SPRING, COMPRESSION	176
-	1	1	1	1	1	1752353-1	GUIDE PIN,HOLDDOWN	175
-	1	1	1	1	1	1901680-1	GUIDE PIN,HOLDDOWN	174
-	REF	REF	REF	REF	REF	SEE TABLE	MEMORY CHIP, PROGRAMMED	135
-	1	1	1	1	1	1633565-1	DOCUMENTATION PACKAGE	71
-	1	1	1	1	1	1976552-1	TAG,IDENTIFICATION	67
-	2	2	2	2	2	21017-1	SCREW, DRIVE	66
-	1	1	1	1	1	3-18031-0	SCR, SET, CUP POINT M6 X 6.0	63
-	2	2	2	2	2	1655785-1	SCR, BTN SKT HD CAP (M4 X 8)	60
-	4	4	4	4	4	1655783-3	SCR, CAP, SOC HD, LOW HEAD, M4 X 12	54
-	1	1	1	1	1	1-18030-0	NUT, HEX, REG M3.5	52
-	1	1	1	1	1	1901681-1	HOLDDOWN, TERMINAL	51
-	1	1	1	1	1	2-1752354-2	STANDOFF,HOLD-DOWN	50
-	1	1	1	1	1	1752300-1	SF SYSTEM III APPLICATOR	46
-	1	1	1	1	1	690191-1	PLUG,NYLON	45
-	1	1	1	1	1	1901069-1	RAM ASSEMBLY, SYSTEM III RETROFIT	44
-	1	1	1	1	1	2-1655785-3	SCR, BTN SKT HD CAP (M8 X 25)	41
-	1	1	1	1	1	690125-1	SHIM SUB-ASSY	39
-	1	1	1	1	1	469367-9	SHIM	38
-	1	1	1	1	1	879103-3	FINE ADJUST HEAD ASSEMBLY	37
-	1	1	1	1	1	1-1752356-3	SUPPORT, TERMINAL	34
-	2	2	2	2	2	3-1655785-3	SCR, BTN SKT HD CAP (M4 X 20)	33
-	1	1	1	1	1	18028-3	WASHER, FLAT, REG M5	32
-	1	1	1	1	1	5-1655316-3	SCR, SKT HD CAP, M5 X 10.0	31
-	1	1	1	1	1	1-1320908-5	SPACER, STRIP GUIDE	30
-	1	1	1	1	1	1901087-1	ASSEMBLY, STRIP GUIDE	29
-	1	1	1	1	1	1-455888-0	SPACER, CRIMPER	28
-	1	1	1	1	1	1320928-5	PLATE, STRIP GUIDE	24
-	1	1	1	1	1	1976045-1	STRIPPER	22
-	1	1	1	1	1	18028-2	WASHER, FLAT, REG M4	20
-	REF	REF	REF	REF	REF	1752311-1	STRIPPER	19
-	1	1	1	1	1	1338684-1	SHEAR HOLDER, FRONT	13
-	1	1	1	1	1	3-22280-3	SPRING, COMPRESSION	12
-	1	1	1	1	1	356885-4	STOP, SHEAR	11
-	1	1	1	1	1	1320921-1	SHEAR HOLDER, FRONT, CUT	10
-	1	1	1	1	1	462006-1	FLOATING SHEAR, FRONT	9
-	1	2	2	1	1	5-1333202-3	ANVIL, COMBINATION	8
-	1	1	1	1	1	2-455889-0	DEPRESSOR, SHEAR	5
-	1	1	1	1	1	238011-9	BLOCK, CRIMPER SPACER	4
-	1	2	2	1	1	8-456135-0	CRIMPER, INSULATION O PREMIUM	3
-	1	1	1	1	1	455888-6	SPACER, CRIMPER	2
-	1	2	2	1	1	3-456403-9	CRIMPER, WIRE PREMIUM	1
-	77	-76	-71	-6	-1	PART NO	DESCRIPTION	ITEM NO

THIS DRAWING IS A CONTROLLER DOCUMENT FOR TYCO ELECTRONICS CORPORATION. IT IS SUBJECT TO CHANGE AND THE USER SHALL BE RESPONSIBLE FOR OBTAINING THE LATEST REVISION. SHOULD BE CONTACTED FOR THE LATEST REVISION.		OWN R. DOBSON 11JAN2008	Tyco Electronics Harrisburg, PA 17105-3608	
DIMENSIONS: INCHES[mm]		CHK R. DOBSON 11JAN2008	NAME SIDE FEED SYSTEM III APPLICATOR WITH FINE ADJUST	
TOLERANCES UNLESS OTHERWISE SPECIFIED:		APVD N. DEMING 11JAN2008	SIZE CAGE CODE DRAWING NO	
0 PLC ±.0005		PRODUCT SPEC	A 00779 C=2034014	
1 PLC ±.0005		APPLICATION SPEC	RESTRICTED TO	
2 PLC ±.0005		SEE TABLE	-	
3 PLC ±.0005		WEIGHT	-	
4 PLC ±.0005		CUSTOMER DRAWING	SCALE 3:5 SHEET 1 OF 1 REV A	
ANGLES FINISH				

AMP 4805 REV 31MAR2000

Pro/ENGINEER DRAWING