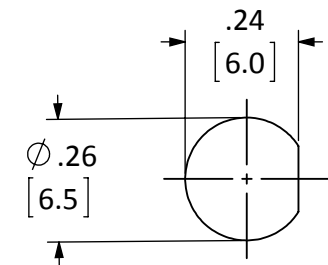
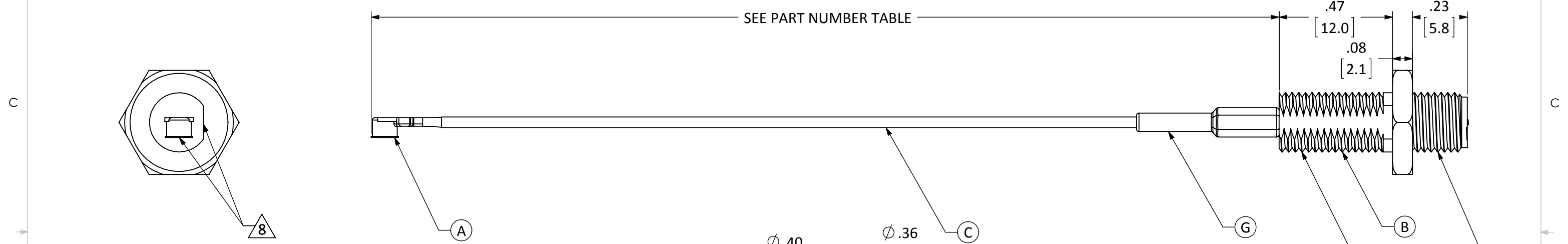


| ITEM | DESCRIPTION | MATERIAL | FINISH |
|------|---|----------------|--------|
| A | U.FL PLUG | BRASS | GOLD |
| B | SEALED RP-SMA FEM. BULKHEAD MOUNT CONNECTOR | BRASS | GOLD |
| C | CABLE | 1.13mm COAXIAL | GRAY |
| D | NUT | BRASS | GOLD |
| E | WASHER | BRASS | GOLD |
| F | O-RING | Si RUBBER | BLACK |
| G | HEAT SHRINK TUBING | POLYOLEFIN | BLACK |

| REVISIONS | | | |
|-----------|---|-----------|------|
| REV | DESCRIPTION | DATE | APPV |
| A | INITIAL RELEASE OF LINX INTERNAL DRAWING | 18-AUG-17 | CLL |
| B | UPDATED NOTES TO ADD TORQUE SPECIFICATIONS AND PACKAGING INSTRUCTIONS; ADDED MOUNTING HOLE; ADDED "-B" PART NUMBERS; UPDATED DIMENSIONS | 27-OCT-17 | CLL |



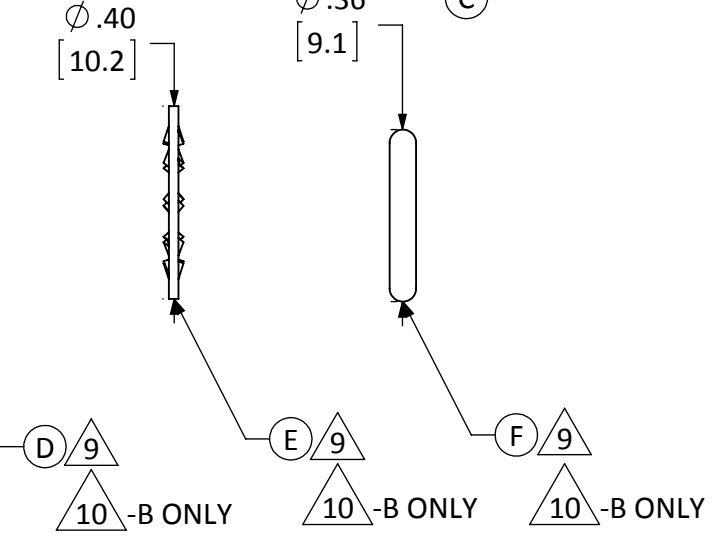
RECOMMENDED MOUNTING HOLE



- NOTES: (UNLESS OTHERWISE SPECIFIED)
- ALL DIMENSIONS ARE IN INCHES [mm].
 - DIMENSIONS APPLY AFTER FINISHING.
 - MANUFACTURE TO BE COMPLIANT WITH EU RoHS DIRECTIVE, USE MATERIALS THAT DO NOT CONTAIN REACH SUBSTANCES OF VERY HIGH CONCERN >1000ppm, AND USE DRC CONFLICT-FREE SOURCED MATERIALS.
 - MINIMUM FREQUENCY RANGE: DC TO 3GHz.
 - CABLE ASSEMBLY SPECIFICATIONS;
 - CHARACTERISITIC IMPEDANCE: $50\Omega \pm 3\Omega$
 - INSERTION LOSS: 100mm - 0.34vf IN GHz TYP.
 - 200mm - 0.56vf IN GHz TYP.
 - 300mm - 0.73vf IN GHz TYP.
 - CONNECTOR TO BE APPLIED IN ACCORDANCE WITH CONNECTOR SUPPLIER RECOMMENDED PROCEDURE.
 - TORQUE SPECIFICATIONS;
 - BULKHEAD MOUNTING NUT TORQUE: 7 TO 10 in-lbs.
 - RECOMMENDED MATING TORQUE: 7 TO 10 in-lbs.

- 8 CONNECTORS TO BE ORIENTED WITH U.FL CONNECTOR MATING FACE 90° CLOCKWISE FROM BULKHEAD CONNECTOR THREAD FLAT FACE, AS SHOWN.
- 9 INSTALL O-RING (ITEM F), WASHER (ITEM E) AND NUT (ITEM D) ONTO CONNECTOR BODY (ITEM B).
- 10 -B PART NUMBERS ONLY: SHIP O-RINGS (ITEM F), WASHERS (ITEM E) AND NUTS (ITEM D) IN SEPARATE BAGS OF 100 PIECES EACH.

1/4 - 36UNS - 2B THREADS



| PART NUMBER | CABLE LENGTH |
|---------------------|---------------|
| CSI-RGFE-100-UFFR | 100mm ± 1.5mm |
| CSI-RGFE-200-UFFR | 200mm ± 3.0mm |
| CSI-RGFE-300-UFFR | 300mm ± 4.5mm |
| CSI-RGFE-100-UFFR-B | 100mm ± 1.5mm |
| CSI-RGFE-200-UFFR-B | 200mm ± 3.0mm |
| CSI-RGFE-300-UFFR-B | 300mm ± 4.5mm |

WARNING: THIS DRAWING CONTAINS PROPRIETARY INFORMATION THAT IS THE SOLE PROPERTY OF LINX TECHNOLOGIES, AND SHALL BE TREATED AS SUCH. NO DISCLOSURE OR REPRODUCTION OF THIS DOCUMENT IS PERMITTED, IN WHOLE OR IN PART, WITHOUT THE EXPRESS WRITTEN PERMISSION OF LINX TECHNOLOGIES OR ITS DESIGNATED AGENTS.

MATERIAL: INTERPRET DIMENSIONS AND TOLERANCES PER ASME Y14.5. SURFACE FINISH: $\sqrt{32}$ ANGLES: $\pm 1^\circ$ TOLERANCES: .X \pm .1 .XX \pm .01 .XXX \pm .005

FINISH: DRAWN: B.MURPHY DT: 26-JUL-17 ENGR: D.VARATHARAJAN DT: 18-AUG-17

Linx 159 ORT LANE MERLIN, OR 97532

TITLE: CABLE ASSEMBLY, U.FL TO FEM. BLKHD RP-SMA, 1.13mm CBL

SIZE DWG. NO. REV
B CSI-RGFE-ccc-UFFR-p **B**

SCALE: 2.5:1 DO NOT SCALE DRAWING SHEET 1 OF 1