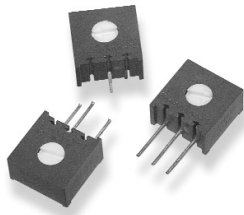


## Type 4295 Series



These long established 10mm square, single turn potentiometers will meet a wide range of industrial and professional applications. Cermet element technology ensures stability and reliability. This P.C.B. mounted package has easy top or side adjustment, or finger adjust styles. All components are sealed to withstand printed circuit board washing solvents.

### Key Features

- High Resolution Cermet Element For Stability
- Enclosure Sealed
- 0.5 Watt Rating at 85°C
- Flame Retardant
- P.C.B. Standoffs
- Robust Construction
- Vertical or Horizontal Adjustments Available
- Finger Adjustment Available

### Characteristics - Electrical

|                                 |                                       |
|---------------------------------|---------------------------------------|
| Resistance Range:               | 100R to 2M                            |
| STD Resistance Values:          | 1, 2 and 5 in each decade             |
| STD Resistance Tolerance:       | ± 10%                                 |
| End Resistance:                 | 20hms or 1% whichever is greater      |
| Slider Current:                 | 100 mA or within power rating, Max.   |
| Power Rating, Watts:            | 0.5 at 85°C derating to zero at 125°C |
| Isolation Voltage:              | 300 V dc or ac peak                   |
| Limiting Element Voltage:       | 220 V dc or ac RMS, Max.              |
| Breakdown Voltage. (Sea Level): | 900 V ac for one minute               |
| Insulation Resistance:          | 1000 M Ohms at 500 V dc, Min.         |
| Resolution:                     | Essentially Infinite                  |
| Rotational Noise (CRV):         | 3 Ohms or 2 % min.                    |
| Temperature Coefficient:        | ± 250 ppm/°C, Max.                    |
| Electrical Adjustment:          | 280° Nominal                          |

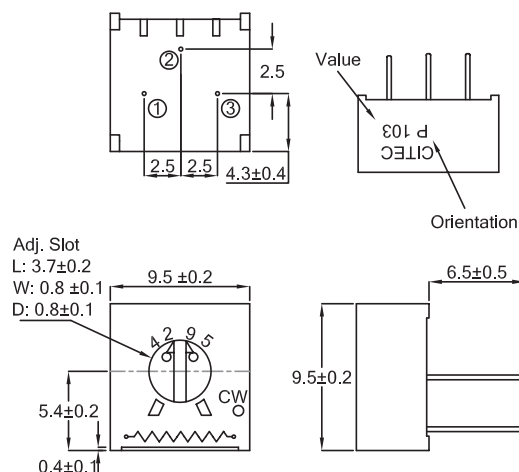
### Characteristics - Mechanical

|                        |                         |
|------------------------|-------------------------|
| End Stop:              | 40 mNm Min.             |
| Starting Torque:       | 35 mNm Max.             |
| Mechanical Adjustment: | 300° Nominal            |
| Weight:                | 0.85 gm Nominal         |
| Solderability:         | MIL Std 202 Method 208A |

### Characteristics - Environmental

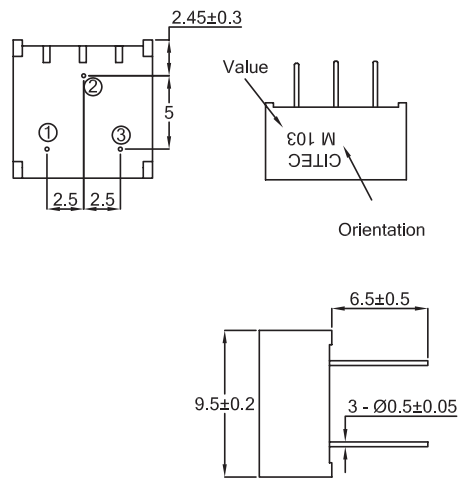
|                      |   |
|----------------------|---|
| Temperature Range:   | -55°C to +125°C                           |
| Temperature Storage: | 250 Hrs at 125°C                          |
| Thermal Shock:       | 5 Cycles -55°C to +125°C                  |
| Bump Severity:       | 4000 Bumps; 40G                           |
| Vibration Severity:  | 10 - 500Hz; 30 G                          |
| Rotational Life:     | 200 Cycles, Min.                          |
| Load Life at 70°C:   | ΔR < 3% after 1000 Hrs. at 0.5 watts      |
| Sealing:             | Sealed for board washing (85°C Florinert) |
| Climatic Category:   | 55/125/56                                 |
| Humidity:            | MIL - Std - 202G Method 103 (96hrs)       |

### Dimensions 4295P

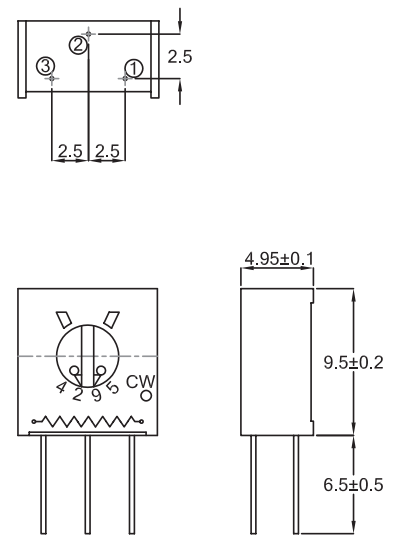


**Type 4295 Series**

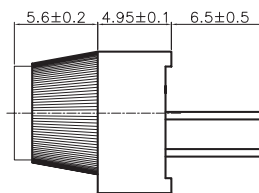
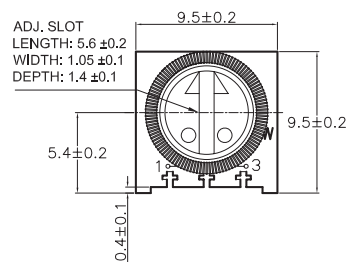
**Dimensions  
4295M**



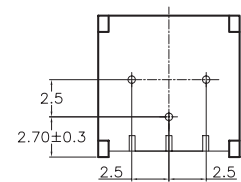
**4295X**



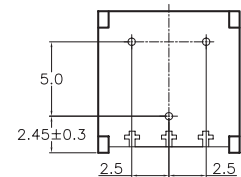
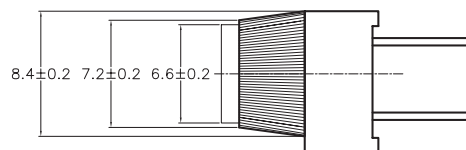
**4295MF/PF**



**4295PF**



**4295MF**



**How to Order**

| 4295        | P  | 104   | K         |
|-------------|--|---|-----------|
| Common Part | Pin Configuration  | Resistance Value  | Tolerance |
| 4295        | <p>M – Top Adjust<br/>5mm x 5mm</p> <p>MF – Finger Top Adjust<br/>5mm x 5mm</p> <p>P – Top Adjust<br/>5mm x 2.5mm</p> <p>PF – Finger Top Adjust<br/>5mm x 2.5mm</p> <p>X – Side Adjust<br/>5mm x 2.5mm</p> | <p>The first two digits are significant figures of resistance value and the third denotes the number of zeros following.</p> <p>e.g. 100R: 101<br/>1K: 102<br/>10K: 103<br/>100K: 104</p> | K - 10 %  |

# Mouser Electronics

Authorized Distributor

Click to View Pricing, Inventory, Delivery & Lifecycle Information:

[TE Connectivity:](#)

[404806393010](#)