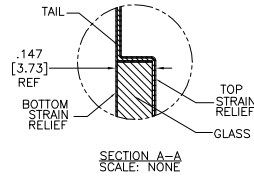
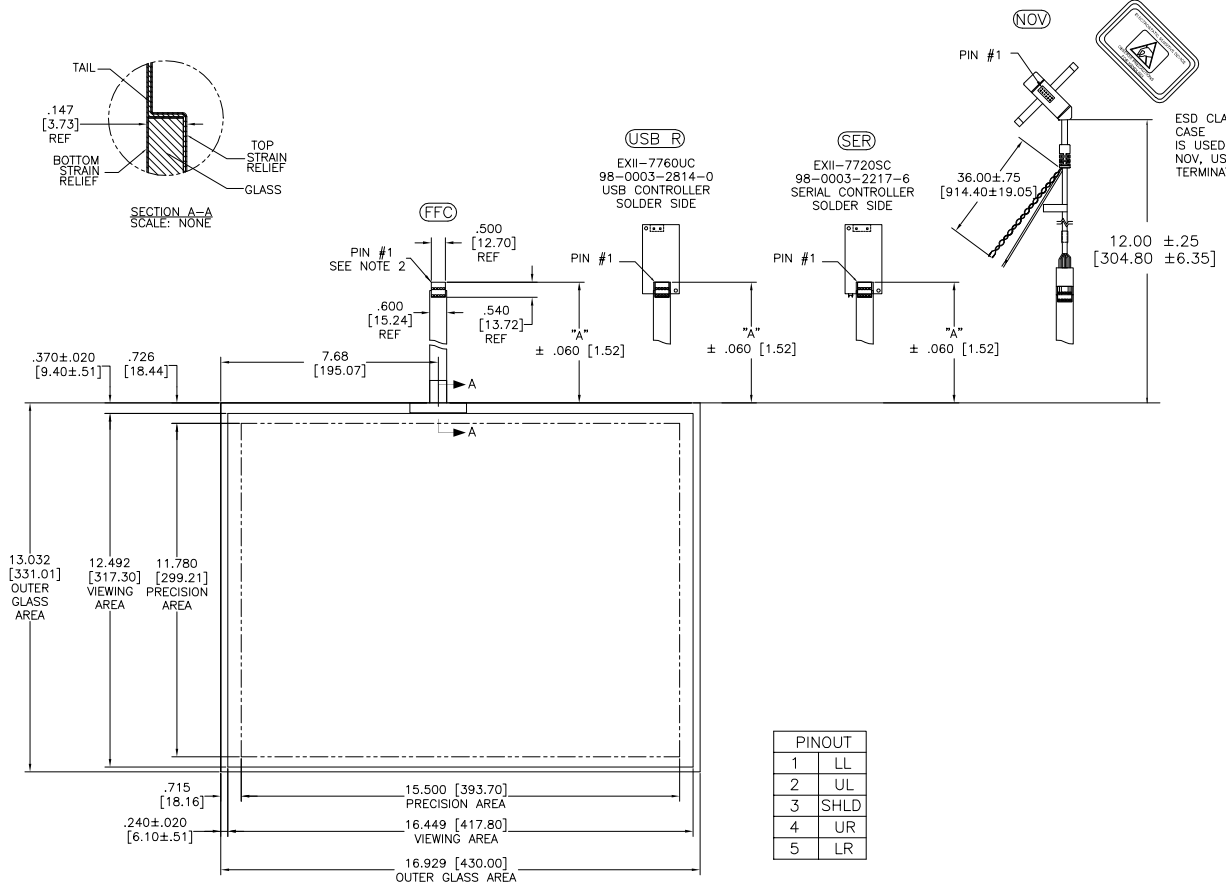


OGA DIAGONAL: 21.36 [542.65]
 VA DIAGONAL: 20.65 [524.63]
 PA DIAGONAL: 19.47 [494.50]

TOP LEVEL NUMBER	US NUMBER	TYPE	DIM "A" (TOTAL GLASS TO CONNECTOR)	A/G FINISH	PROD SPEC
17-8441-203	98-0003-2601-1	FFC	4.27" [108.46]	AG500	23655
17-8441-221	98-0003-2606-0	SER	4.27" [108.46]	AG500	23655
17-8441-204	98-0003-2981-7	FFC	6.00" [152.40]	AG500	23655
17-8441-223	98-0003-2607-8	SER	6.00" [152.40]	AG500	23655
17-8441-227	98-0003-2195-4	SER	8.00" [203.20]	AG500	23655
17-8441-205	98-0003-2602-9	FFC	8.00" [203.20]	AG500	23655
17-8441-206	98-0003-2603-7	NOV	SEE DWG	AG500	23655
17-8441-218	98-0003-3153-2	USB R	4.27" [108.46]	AG500	23655
17-8441-220	98-0003-3154-0	USB R	6.00" [152.40]	AG500	23655
17-8441-226	98-0003-3155-7	USB R	8.00" [203.20]	AG500	23655



.147±.020 [3.73±.51]
 TOTAL THICKNESS
 OF GLASS, CABLE
 AND STRAIN RELIEF



ESD CLAMSHELL
 CASE
 IS USED WITH ALL
 NOV, USB AND SER
 TERMINATIONS.

PINOUT	
1	LL
2	UL
3	SHLD
4	UR
5	LR

NOTES:

1. WEIGHT OF GLASS IN GRAMS: 1084±10%
2. NICOMATIC HOUSING P/N: OLO5
 NICOMATIC RECEPTACLES (PINS) MATTE TIN PLATED P/N: 14106-12
 HOUSING ORIENTED WITH LATCH DOWN

UNITS	INCHES [MM]
TOLERANCES UNLESS OTHERWISE SPECIFIED	
.X	± .03 [.76]
.XX	± .015 [.38]
.XXX	± .015 [.38]
ANGLES ±1°	
THIRD ANGLE PROJECTION	
DO NOT SCALE DRAWING	
SCALE 1 = 1	

3M 3M TOUCH SYSTEMS
 METHUEN, MA
 USA

© COPYRIGHT 2004
 THIS DOCUMENT IS COPYRIGHTED PROPERTY OF THE
 3M COMPANY AND MAY NOT BE REPRODUCED
 WITHOUT 3M WRITTEN PERMISSION OR USED OR
 DISCLOSED FOR OTHER THAN 3M AUTHORIZED
 PURPOSES.

DRAWN K CROWLEY 9/05

REV	CHANGE NOTICE	DATE	DRW
H	REVISED PER CO 036256	4/13	SB
G	REVISED PER CO 033533	2/12	SB
F	REVISED PER CO 033616	9/11	SB

TITLE

MARKETING DRAWING
 SCT32NN 20.65"

CAD FORMAT AUTOCAD SHEET 1 OF 1

SIZE C DOCUMENT NO. 28213-MKT REV H