

CONTACT ORIENTATION ON ROLL

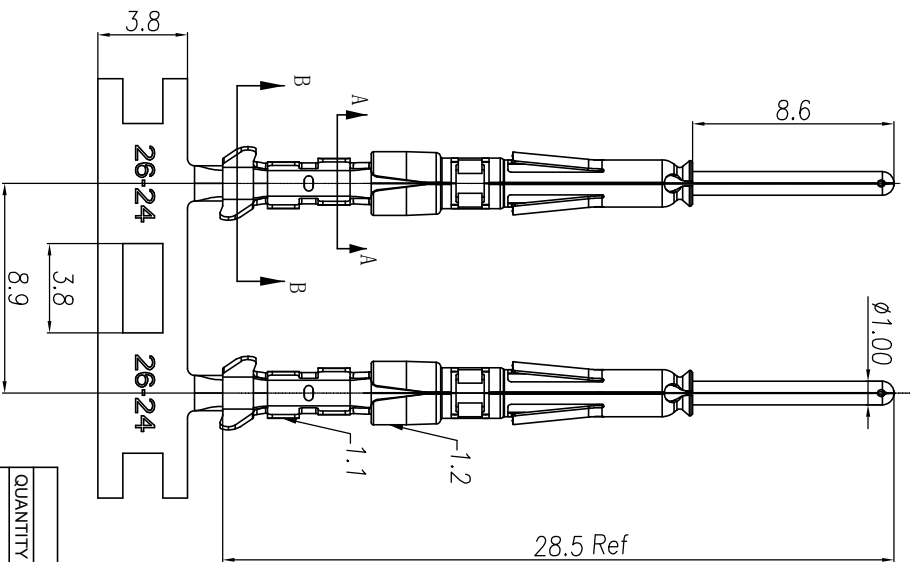
NOTES: (UNLESS OTHERWISE SPECIFIED)

1. MATERIAL:
  - 1.1. CONTACT BODY: COPPER ALLOY.
  - 1.2. OUTER SPRING: STAINLESS STEEL.
2. SPECIFICATIONS:
  - 2.1 CURRENT RATING: 5A MAX.
  - 2.2 TERMINATION TYPE: CRIMPING.
  - 2.3 WIRE RANGE: 26~24AWG.
  - 2.4 WIRE INSULATION DIA(MAX):  $\varnothing 2.2\text{mm}$ .
3. ROHS COMPLIANT.
4. ALL DIMENSIONS ARE FOR REFERENCE USE ONLY.
5. AVAILABLE TOOLS:
  - 5.1 HAND CRIMPER: MFX-3958. A3
  - 5.2 CRIMP APPLICATOR: MFX-3957.
  - 5.3 EXTRACTION TOOL: QXRT20.

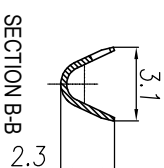
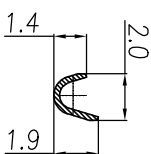
P/N	CONTACT PLATING(MATING AREA)
SP24W2T	TIN PLATING OVER NICKEL.
SP24W2N	NICKEL PLATING OVER COPPERIZE.
SP24W2F	GOLD FLASH PLATING OVER NICKEL.
SP24W2G5	5 $\mu$ " GOLD PLATING OVER NICKEL.
SP24W2G10	10 $\mu$ " GOLD PLATING OVER NICKEL.
SP24W2G15	15 $\mu$ " GOLD PLATING OVER NICKEL.
SP24W2G30	30 $\mu$ " GOLD PLATING OVER NICKEL.

A2

REVISIONS					
REV	ECO	DESCRIPTION	DATE	BY	APPR
A1	-	RELEASED DRAWING	Nov-8-17	Rookie	Tommy
A2	-	ADD THE G5 PART NUMBER	Jan-28-19	Blink	Tommy
A3	-	CHANGE HAND CRIMPER	Nov-8-19	Flan	Tommy



SECTION A-A



SECTION B-B

QUANTITY	PART NUMBER	DESCRIPTION	ITEM
		<b>MATERIALS LIST</b>	

UNLESS OTHERWISE SPECIFIED			
1) All dimensions are in millimeters.	DRAWN:	RAI	Nov-8-19
2) Tolerances are as follows:	CHECKED:	MWH	Nov-8-19
1 Pt. DEC 20 2018	ENGINEER:		
3 Pt. DEC 20 2018	APPROVE:	Tommy	Nov-8-19
3) Note reference =	CUSTOMER:		

PROCESS SPECIFICATIONS		MATERIAL SPECIFICATIONS	
NEXT ASSY:		ECO-MATE PIN CONTACT.	
SCALE: NONE		STAMPED: 24-28AWG, SIZE 20	
SIZE: B		DRAWING NO: SP24W2XX	
TYPE: C-		REVISION: A3	
SHEET: 1		OF: 1	

**Amphenol**  
Sine Systems - www.amphenol-sine.com  
44724 Montey Drive  
Clinton Township, MI 48038