

DESIGNED & DIMENSIONED  
IN MILLIMETERS[INCHES]

BNC7T-P-C-XX-ST-CA6

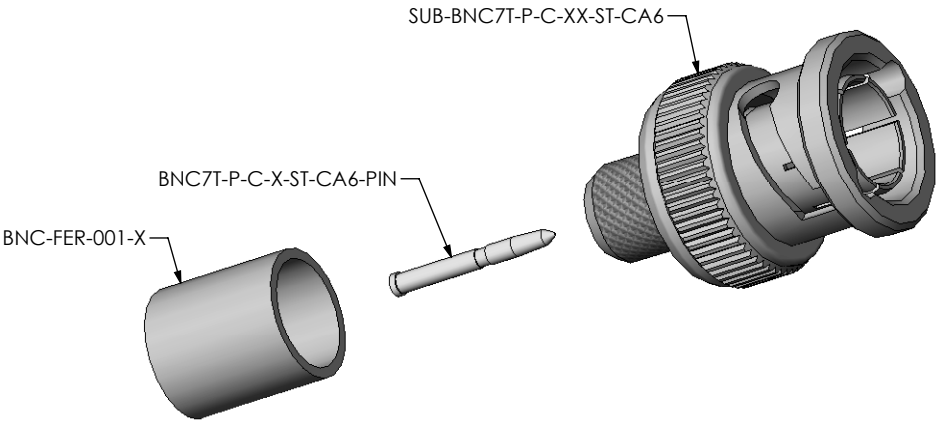
GENDER  
-P: PLUG

TYPE  
-C: CABLE

TERMINATION  
-CA6: RG-6 CABLE

ORIENTATION  
-ST: STRAIGHT

PLATING SPECIFICATION  
-MN: MEDIUM GOLD/NICKEL (SEE NOTES 7 & 8)  
(SUB-BNC7T-P-C-N-ST-CA6)  
(BNC7-P-C-M-ST-CA6-PIN)  
(BNC-FER-001-N)

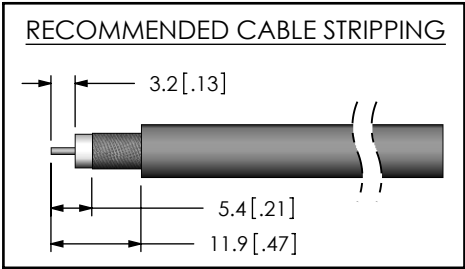


DO NOT  
SCALE FROM  
THIS PRINT

FIG.1  
BNC7T-P-C-XX-ST-CA6 SHOWN

NOTES:

- 1. REPRESENTS A CRITICAL DIMENSION.
- 2. PUSHOUT FORCE FOR CENTER CONTACT: 26.69 N [6.0 LB] MIN.
- 3. SEE SHEET 3 FOR TERMINATION INFORMATION.
- 4. NOTE DELETED.
- 5. PRODUCT TO BE PACKAGED PER PACKAGING STANDARD CO-HD-WI-3040-M.
- 6. RoHS COMPLIANT.
- 7. COMPONENT PLATING DESIGNATIONS:
  - M: .000010" MIN. GOLD OVER .000050" MIN. NICKEL.
  - N: .000100" MIN. NICKEL.
- 8. ASSEMBLY PLATING DESIGNATIONS:
  - MN: (CENTER CONTACT)-M:  
(OUTER CONTACT)-N:  
(REMAINING METAL PARTS)-N:



THIS PRODUCT MANUFACTURED  
WITH LEAD-FREE PROCESSING

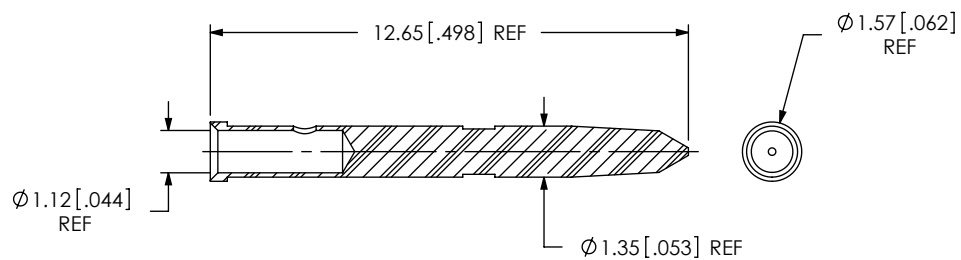
F:\DWG\MISC\MKTG\BNC7T-P-C-XX-ST-CA6-MKT.SLDDRW

UNLESS OTHERWISE SPECIFIED DIMENSIONS ARE IN MILLIMETERS [INCHES]	
TOLERANCES ARE:	
DECIMALS	ANGLES
.X: ±0.3 [.01]	2 °
.XX: ±0.13 [.005]	
.XXX: ±0.051 [.0020]	
<b>MATERIAL:</b> DO NOT SCALE DRAWING SHEET SCALE: 1:1	
SHELL, FERRULE, NUT: BRASS	
CONTACT: BRASS	
DIELECTRIC: PTFE	
GASKET: SILICONE	

PROPRIETARY NOTE  
THIS DOCUMENT CONTAINS INFORMATION  
CONFIDENTIAL AND PROPRIETARY TO  
SAMTEC, INC. AND SHALL NOT BE REPRODUCED  
OR TRANSFERRED TO OTHER DOCUMENTS OR  
DISCLOSED TO OTHERS OR USED FOR ANY  
PURPOSE OTHER THAN THAT WHICH IT WAS  
OBTAINED WITHOUT THE EXPRESSED WRITTEN  
CONSENT OF SAMTEC, INC.

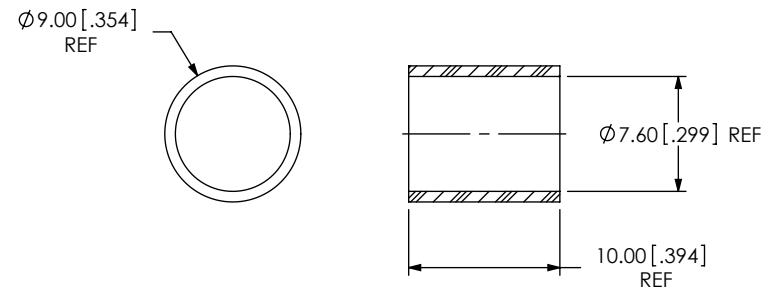
**samtec**  
520 PARK EAST BLVD, NEW ALBANY, IN 47150  
PHONE: 812-944-6733 FAX: 812-948-5047  
e-Mail: info@SAMTEC.com code: 55322

DESCRIPTION: TRUE 75 OHM BNC STRAIGHT PLUG RG-6	
DWG. NO. BNC7T-P-C-XX-ST-CA6	
BY: G. HERMAN 09/29/2008	SHEET 1 OF 3

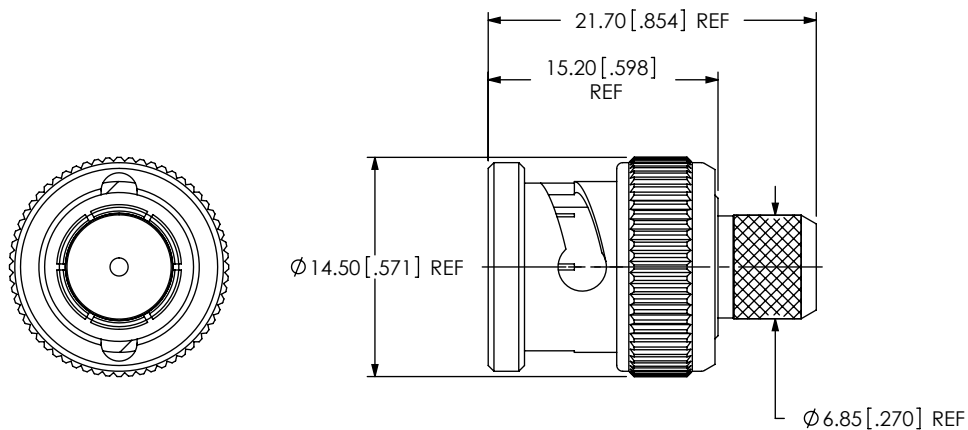


SCALE 5:1

SAMTEC PART NUMBER	ITEM
BNC7T-P-C-X-ST-CA6-PIN	PIN



SAMTEC PART NUMBER	ITEM
BNC-FER-001-X	FERRULE



SAMTEC PART NUMBER	ITEM
SUB-BNC7T-P-C-XX-ST-CA6	SUB ASSEMBLY

F:\DWG\MISC\WKTG\BNC7T-P-C-XX-ST-CA6-MKT.SLDDRW

**PROPRIETARY NOTE**

THIS DOCUMENT CONTAINS INFORMATION  
CONFIDENTIAL AND PROPRIETARY TO  
SAMTEC, INC. AND SHALL NOT BE REPRODUCED  
OR TRANSFERRED TO OTHER DOCUMENTS OR  
DISCLOSED TO OTHERS OR USED FOR ANY  
PURPOSE OTHER THAN THAT WHICH IT WAS  
OBTAINED WITHOUT THE EXPRESSED WRITTEN  
CONSENT OF SAMTEC, INC.

DO NOT SCALE DRAWING

SHEET SCALE: 2:1

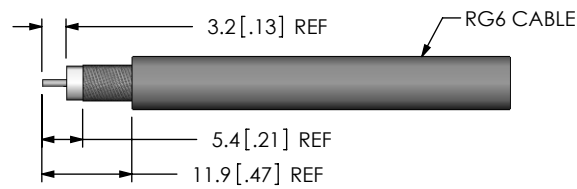
**samtec**

520 PARK EAST BLVD, NEW ALBANY, IN 47150  
PHONE: 812-944-6733 FAX: 812-948-5047  
e-Mail: info@SAMTEC.com code: 55322

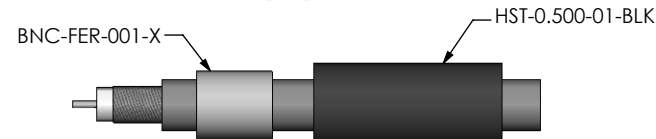
DESCRIPTION:  
TRUE 75 OHM BNC STRAIGHT PLUG RG-6

DWG. NO.  
BNC7T-P-C-XX-ST-CA6

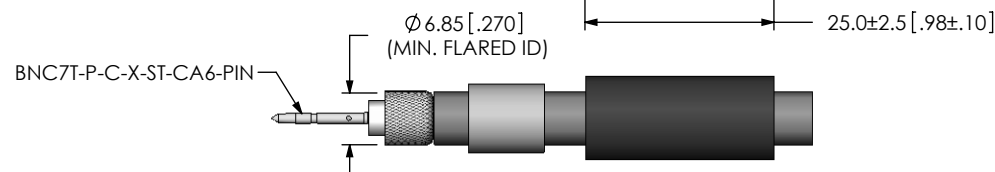
BY: G. HERMAN 09/29/2008 SHEET 2 OF 3



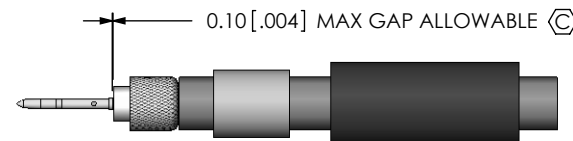
STRIP AND TIN INNER CONDUCTOR



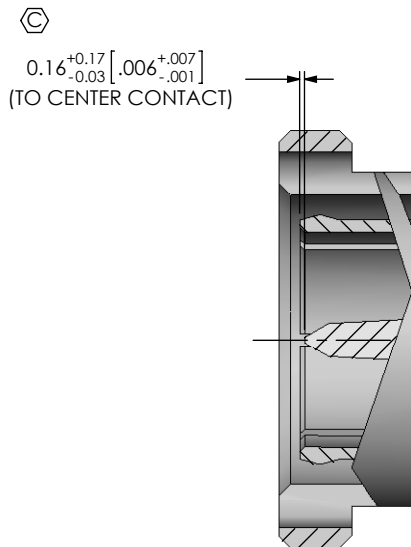
ADD HEAT SHRINK TUBE AND FERRULE



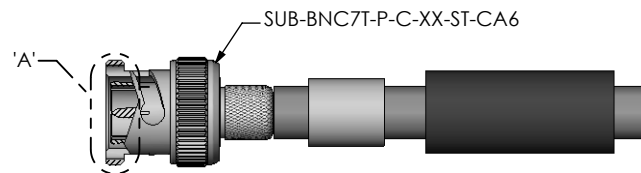
FLARE BRAIDED SHIELD AND ADD SIGNAL PIN



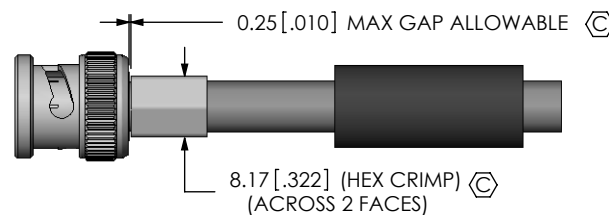
SOLDER SIGNAL PIN



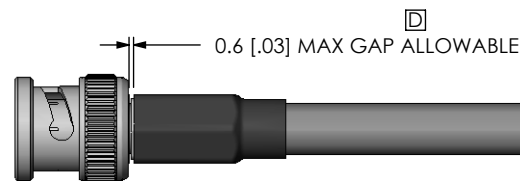
DETAIL 'A'  
SCALE 4:1



ADD SUB-BNC7T-P-C-XX-ST-CA6  
CABLE FOIL WRAP TO BE INSERTED INSIDE CABLE BODY



CRIMP FERRULE  
(USE RF CRIMP HAND TOOL #CAT-HT-126667-21 OR EQUIVALENT)



APPLY HEAT SHRINK TUBE

F:\DWG\MISC\WKTG\BNC7T-P-C-XX-ST-CA6-MKT.SLDDRW

**PROPRIETARY NOTE**

THIS DOCUMENT CONTAINS INFORMATION  
CONFIDENTIAL AND PROPRIETARY TO  
SAMTEC, INC. AND SHALL NOT BE REPRODUCED  
OR TRANSFERRED TO OTHER DOCUMENTS OR  
DISCLOSED TO OTHERS OR USED FOR ANY  
PURPOSE OTHER THAN THAT WHICH IT WAS  
OBTAINED WITHOUT THE EXPRESSED WRITTEN  
CONSENT OF SAMTEC, INC.

DO NOT SCALE DRAWING

SHEET SCALE: 1:1

**samtec**

520 PARK EAST BLVD, NEW ALBANY, IN 47150  
PHONE: 812-944-6733 FAX: 812-948-5047  
e-Mail: info@SAMTEC.com code: 55322

DESCRIPTION:  
TRUE 75 OHM BNC STRAIGHT PLUG RG-6

DWG. NO.  
BNC7T-P-C-XX-ST-CA6

BY: G. HERMAN 09/29/2008 SHEET 3 OF 3