



REMOTE MANAGED
CONSOLE
ACCESS SERVER



DIGI CONNECT IT MINI

Secure, affordable, managed out-of-band access for isolated remote IT devices

The Digi Connect® IT Mini remote console access server ensures continuous network uptime to remote locations. It provides an always-on, out-of-band gateway for branch office routers in locations like retail stores, kiosks or other sites. Connect IT Mini enables backup connectivity to manage and correct issues with isolated, critical IT infrastructure.

For enterprises that need serial access for remote equipment monitoring, Digi Connect IT Mini offers a complete and secure cellular-based solution in the industry for less than the cost of an enterprise modem. Using Digi Remote Manager® (DRM) and Connect IT Mini, network administrators can identify and remediate issues at the network edge before they can become a work order or cause a network interruption.

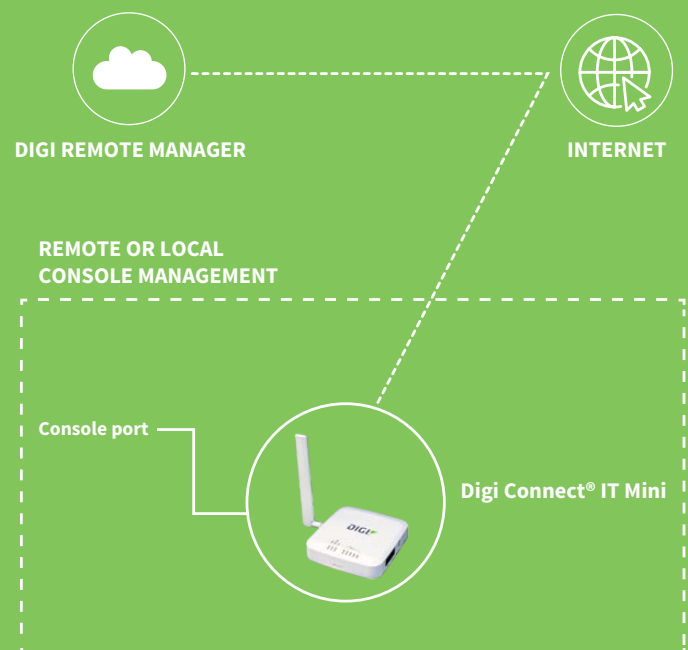
Digi TrustFence®, a suite of hardware and security features, ensures the integrity of Digi Connect IT Mini and safeguards out-of-band access to isolated infrastructure. To secure your connections, built-in features include authenticated boot, encrypted data storage, access-controlled ports, and secure software updates.

DRM and Digi Connect IT Mini provide easy setup, configuration, security management and serial port monitoring of large installations of remote Digi devices. DRM offers web-based device management for any Digi cellular routers, gateways or third-party devices and offers single-pane-of-glass view to monitor and access Digi Connect IT console access servers and the critical IT assets to which they are connected.

FEATURES AND BENEFITS

- LTE Cat-M for maximum coverage
- Out-of-band (OOB) management and recovery using secure SMS
- Advanced modem management software
- Early detection and remediation of issues
- Operates independently from in-band network
- Identify any unusual activity or attempts to access the remote device
- Send automated alerts via email or SMS to notify of any network issues
- Digi Foundations™ 1- or 3-year subscription included

APPLICATION EXAMPLE



RELATED PRODUCTS



Digi Connect® IT 4



Digi Connect® IT 16/48



Digi 6310-DX



Digi ConnectPort® TS



Digi Remote Manager

SPECIFICATIONS	DIGI CONNECT® IT MINI
CELLULAR	LTE Cat-M/NB-IoT
MODULE SUPPORT	Global LTE Cat-M/NB-IoT
SOFTWARE AND MANAGEMENT	
REMOTE MANAGEMENT	Digi Remote Manager® (cloud-based)
LOCAL MANAGEMENT	WebUI (HTTP/HTTPS); CLI (console, SSH)
NETWORK	
ETHERNET	RJ-45; 10/100 Mbps (auto-sensing)
CONNECTIONS	
SERIAL/USB	Serial port RJ45 RS232 and USB 2.0 host port
PHYSICAL	
DIMENSIONS (L x W x H)	127 mm x 127 mm x 25 mm (5.0 in x 5.0 in x 1.0 in)
WEIGHT	0.37 kg (13 oz)
STATUS LEDS	Power, online, LTE, (5) signal strength
POWER REQUIREMENTS	
POWER INPUT	5.0 VDC, 1A; 100-240 VAC
ENVIRONMENTAL	
OPERATING TEMPERATURE	0° C to 40° C (32° F to 104° F)
RELATIVE HUMIDITY	5% to 95% (non-condensing)
APPROVALS	
SAFETY, ENVIROMENTAL, EMISSIONS/IMMUNITY	FCC Part 15, Subpart B, Class A; CE, RCM; CAN ICES03(B)/NMB-3(B)
WARRANTY	
PRODUCT WARRANTY*	3 years + Digi Foundations™

*Digi Foundations can extend the standard three-year warranty to a Limited Lifetime Warranty that provides replacement with a new or similar Digi product for a period of five years from the data of purchase. After five years from the purchase date, the warranty value will revert to a 40 percent credit towards the MSRP of an equivalent product from Digi.

PRODUCT IMAGES

DIGI CONNECT IT MINI LEFT

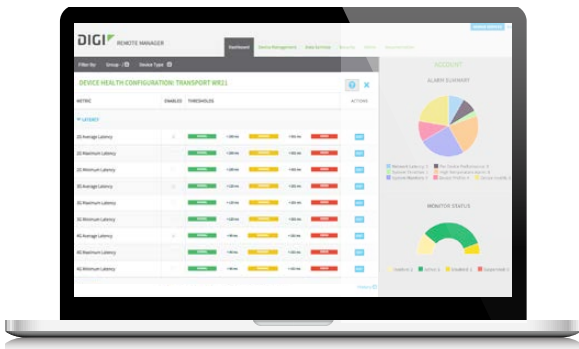


DIGI CONNECT IT MINI RIGHT



ENTERPRISE SOFTWARE	DESCRIPTION
PROTOCOL SUPPORT	HTTP, HTTPS, FTP, SFTP, SSL, SNMP v3, SSH and CLI for web management; Remote management via Digi Remote Manager; SMS management
SECURITY/VPN	IP filtering, stateful inspection firewall with scripting, address and port translation; VPN: IPSec with IKEv1, IKEv2, NAT Traversal; SSL, SSLv2, SSLv3; IPSec & OpenVPN tunnels; Cryptology: SHA-1, SHA-2, MD5, RSA; Encryption: DES, 3DES and AES up to 256-bit (CBC mode for IPSec); Authentication: RADIUS, TACACS+, MAC address filtering; VLAN support
ROUTING/FAILOVER	IP pass-through; NAT, NAPT with IP port forwarding; Ethernet bridging; GRE; Multicast routing; Routing protocols: PPP, OSPF, BGP, RSTP (Rapid Spanning Tree Protocol); IP failover: VRRP, Automatic failover/failback to secondary connection
OTHER PROTOCOLS	QoS via TOS/DSCP/WRED; UDP/TCP to serial

DIGI REMOTE MANAGER®



CAPABILITIES

- Centralized management of remote devices over 3G/4G/LTE
- Define standard configurations and automatically monitor individual devices for PCI security compliance
- Report and alert on performance statistics, including connection history, signal quality, latency, data usage and packet loss
- No servers or applications to operate and maintain
- Complete tasks for your entire device network in minutes
- Edit configurations and update firmware for your individual devices or groups
- Monitor the status and location of your remote device via a web browser
- Active or deactivate cellular lines and monitor data to ensure you never incur overage charges

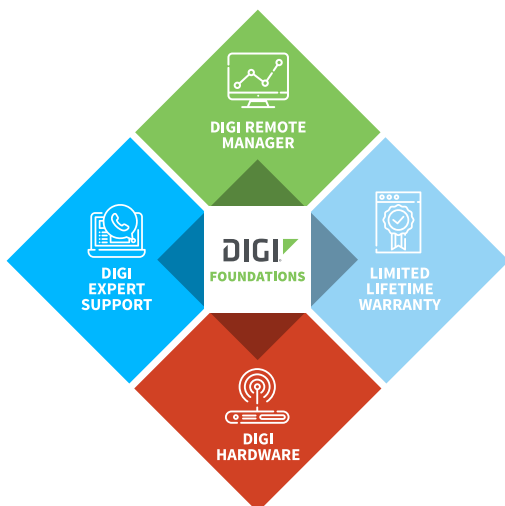
INFRASTRUCTURE

- Hosted in a commercial-grade SAS 70-certified environment
- Superior availability, operating to 99.9% or greater
- Open APIs available to support application development

SECURITY

- Certified SSAE-16 facilities
- Over 175 security controls in place to protect your data
- Enables compliance with security frameworks like PCI, HIPAA, NIST and more
- Earned SkyHigh's Cloud Trust Program highest ranking of Enterprise-Ready

DIGI FOUNDATIONS™



IT'S TIME TO CONNECT WITH CONFIDENCE

The convenient, comprehensive and secure way to integrate IoT communications hardware, device management software, global support and lifetime warranty protection into a connectivity solution to simplify your IoT network growth.

- [Digi Remote Manager®](#) (DRM) gives you a single point of contact, command and control with sophisticated remote device monitoring and management tools.
- [Digi Expert Support](#) is available around the clock, seven days a week, around the world with experts ready to provide technical support by phone, email or online.
- [Digi Limited Lifetime Warranty](#) lowers the total cost of ownership with hardware protection and equipment upgrades to expand your network as needs evolve.

Digi Foundations, with DRM, simplifies network and device management – for hundreds or hundreds-of-thousands of Digi or third-party devices – with options to upgrade as technology evolves. Isn't it time you got better connected?

For more information visit: digi.com/foundations

PART NUMBERS***DIGI CONNECT IT MINI WITH DIGI FOUNDATIONS™**

IT01-M100-OUS

Digi Connect IT Mini remote console access server including 1-year or 3-year subscription to Digi Foundations™

*Includes your choice of 1-year or 3-year subscription to Digi Foundations; note that you must add one of the following SKUs to your order: DGF-BDL-BASE-1YR or DGF-BDL-BASE-3YR.

PART NUMBERS**ACCESSORIES**

Serial cable adapters (for Digi Passport®, Digi CM™, Digi Connect IT)

170012	(1) Cellular antenna (black) for use with Digi products that have LTE modems
76000670	Digi DB-25 male modem adapter (8-pack)
76000671	Digi DB-9 female console adapter (8-pack)
76000672	Digi DB-25 male console adapter (8-pack)
76000673	Digi DB-25 female console adapter (8-pack)
76000702	Digi DB-9 male modem adapter (8-pack)

FOR MORE INFORMATION
PLEASE VISIT **DIGI.COM**

DIGI SERVICE AND SUPPORT / You can purchase with confidence knowing that Digi is always available to serve you with expert technical support and our industry leading warranty. For detailed information visit www.digi.com/support.

© 1996-2019 Digi International Inc. All rights reserved.
All trademarks are the property of their respective owners.

91004398
B2/919

DIGI INTERNATIONAL WORLDWIDE HQ
877-912-3444 / 952-912-3444 / www.digi.com

DIGI INTERNATIONAL GERMANY
+49-89-540-428-0

DIGI INTERNATIONAL JAPAN
+81-3-5428-0261 / www.digi-intl.co.jp

DIGI INTERNATIONAL SINGAPORE
+65-6213-5380

DIGI INTERNATIONAL CHINA
+86-21-50492199 / www.digi.com.cn

