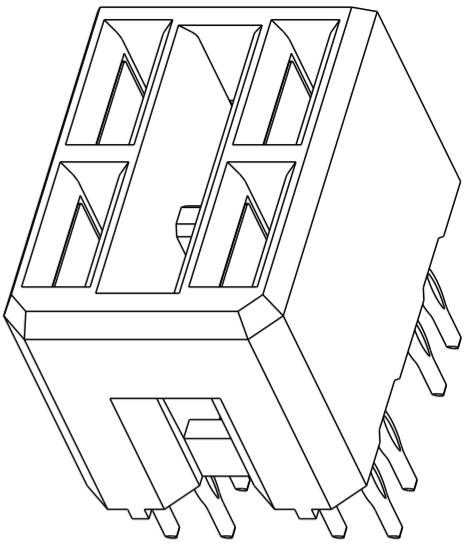
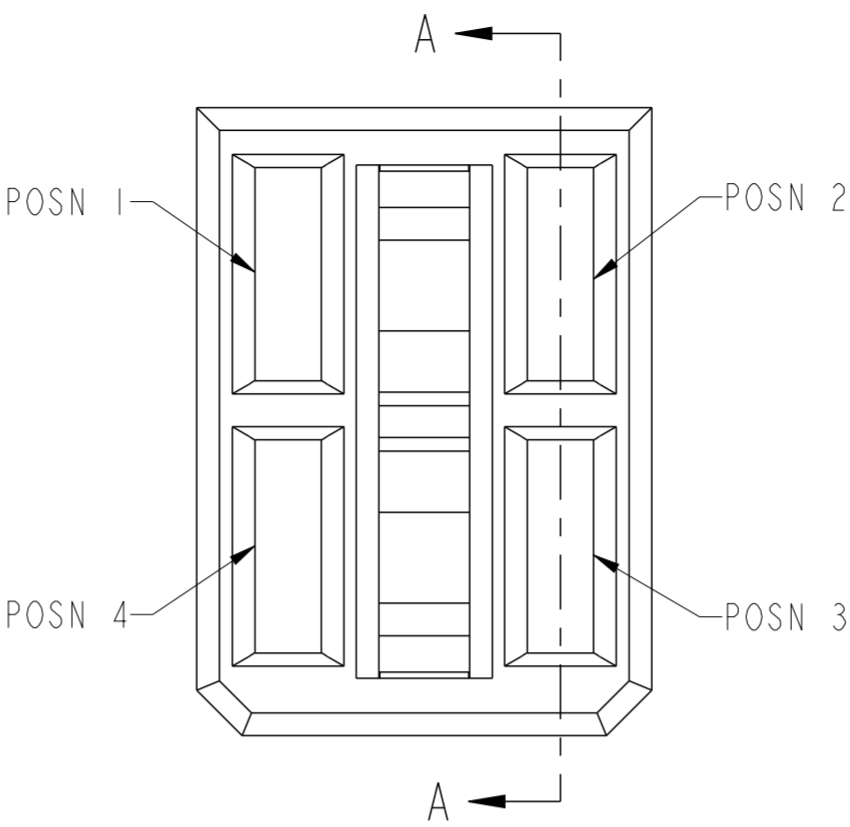
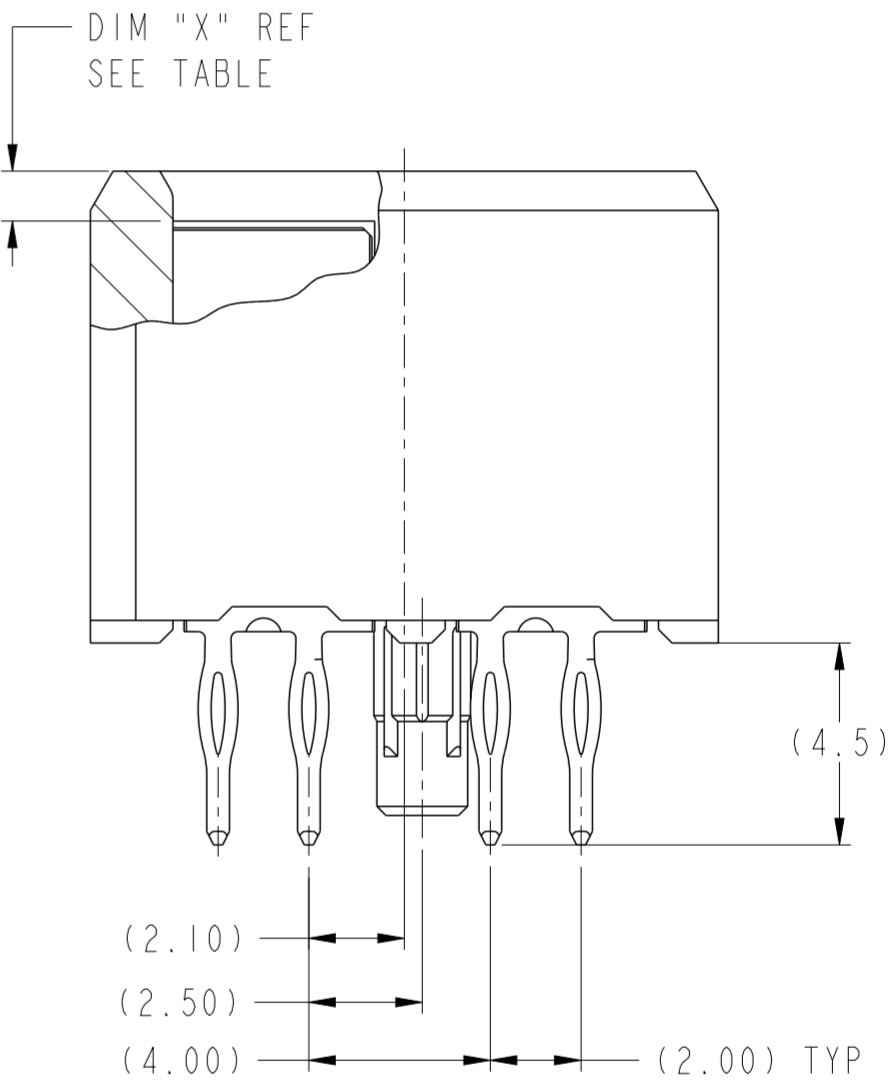
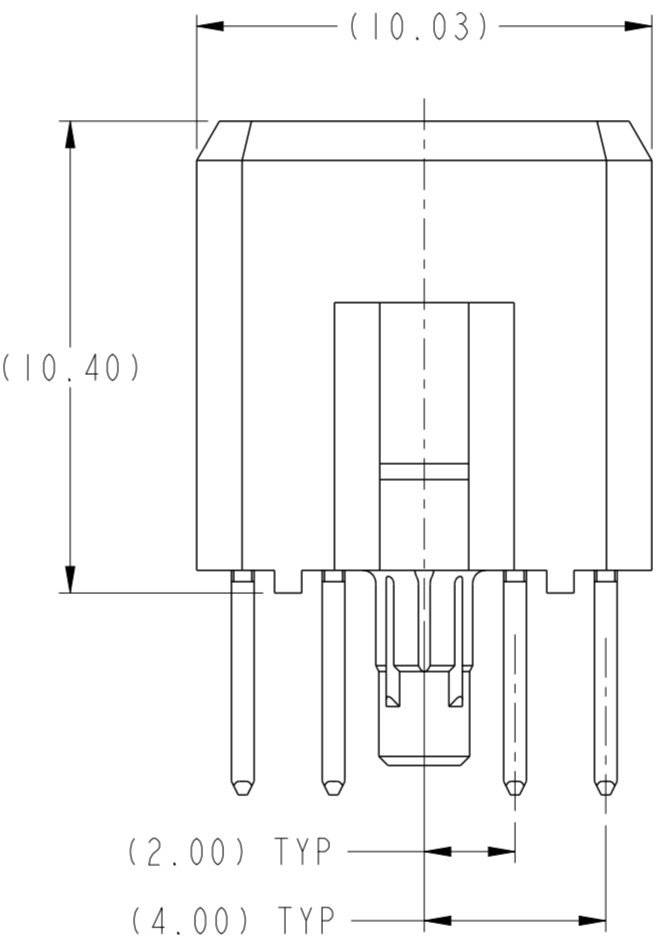
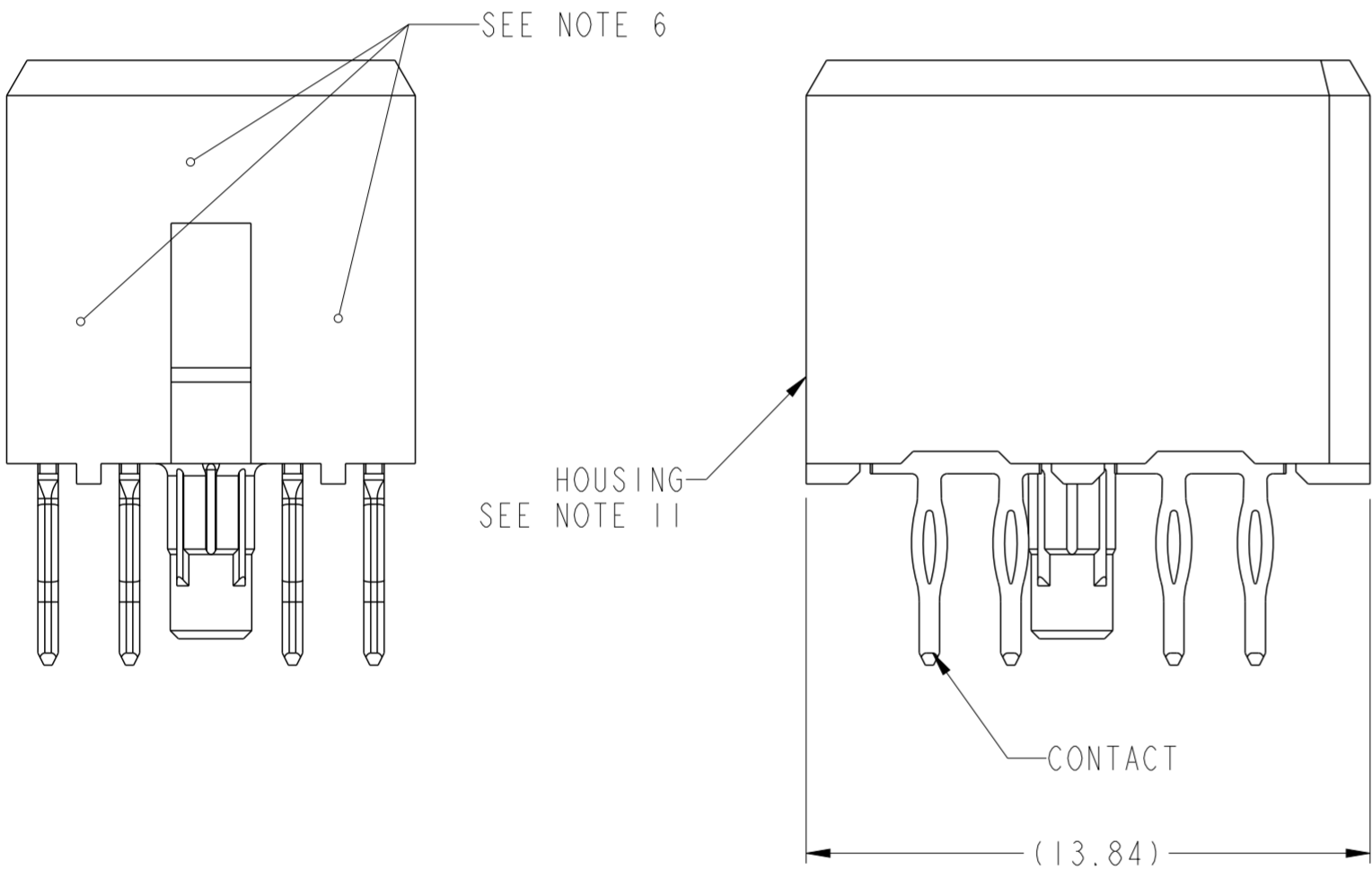


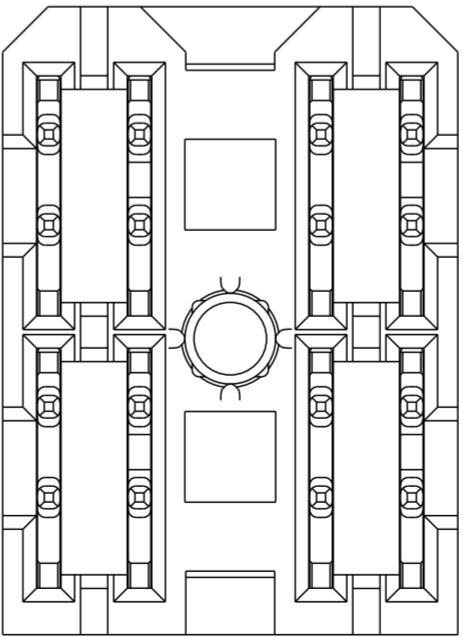
1	2	3				4	5	6	7	8
PRODUCT NUMBER ("LF" DENOTES LEAD-FREE)	CONTACT PLATING NOTE	MATING LENGTH, DIM "X"				ROHS COMPATIBILITY				
		POSN 1	POSN 2	POSN 3	POSN 4					
10098549-4444P00LF	3	1.10	1.10	1.10	1.10	SEE NOTE 9				





SCALE 4:1



SECTION A-A



spec ref	GS-12-220			dr	Chen-Hong Tan	2009/03/23	<div>projection</div> <div></div>	<div>MM</div> <div></div>	size	A2	scale	6:1		
tolerance std	TOLERANCES UNLESS OTHERWISE SPECIFIED			eng	Jackie Chen	2015/08/17								
ASME Y14.5				chr	-	-								
-				appr	Pei-Ming Zheng	2015/08/17	product family	2mm High Power		ecn no	ELX-DG-21664-1			
												rel level	Released	
surface <div>3/2</div>	linear	0.X ±.3		<div>FCi</div>	title	2x2 VERTICAL RECEPTACLE ASSY AIRMAX POWER				dwg no	10098549		rev	B
		0.XX ±.1												
		0.XXX ±.05												
ASME Y14.5	angular	0° ±2°		www.fci.com	cat. no.	-	Product - Customer Drw					sheet 1 of 2		

PDS: Rev :B

STATUS:Released

Printed: Aug 18, 2015

