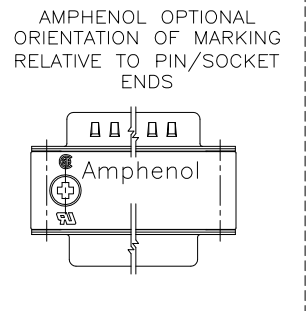
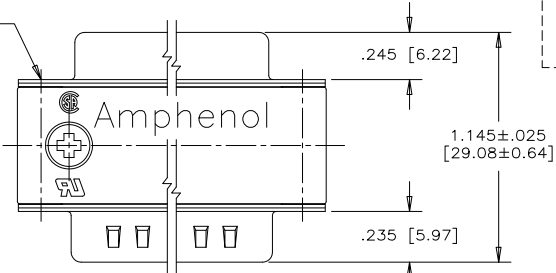


CONTACT POSITION #1

MOUNTING CODE 4
4-40 UNC THREAD
OR
MOUNTING CODE 6
M3 x 0.5 THREAD
X .240 [6.10] MIN.
DEEP (4 PLACES)



ORDERING CODE: F C E 1 7 - B 2 5 A D - 4 0 0 G

SERIES
FCE17=FILTERED D-SUB, RoHS

SIZE/NUMBER OF CONTACTS
E09, A15, B25, OR C37

CONNECTOR STYLE
AD=PIN/SOCKET ADAPTER

MOUNTING
2=.120 [3.05] DIA. THROUGH HOLE
WITH #4-40 MOUNTING POST
4=#4-40 UNC THREAD
6=M3 x 0.5 THREAD
K=.120 [3.05] DIA. THROUGH HOLE
WITH M3 x 0.5 MOUNTING POST

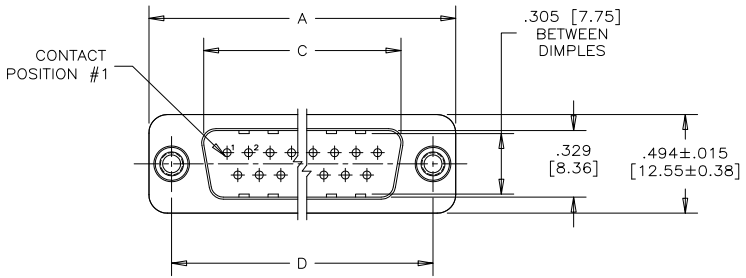
| REVISIONS | | | |
|-----------|-----------------------------|-----------|--------|
| REV | ECN, ERN NO. | DATE | APPRD. |
| E | PRODUCT DRAWING (EAR 14498) | NOV11/16 | K.L. |
| F | PRODUCT DRAWING (EAR 14579) | JULY19/17 | K.L. |

CONTACT FINISH/GOLD THICKNESS
NO DIGIT=STANDARD 15 MICROINCHES
[0.38 MICRONS] GOLD ON
MATING AREA
G=50 MICROINCHES [1.27 MICRONS]
GOLD ON MATING AREA

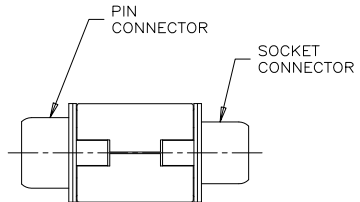
MODIFIER
O=STANDARD

FILTER CAPACITANCE
D=50 pF 5=1000 pF
B=100 pF 7=1200 pF
O=180 pF 6=1300 pF
F=330 pF J=1500 pF
L=380 pF E=2200 pF
1=470 pF 9=5600 pF
4=820 pF 8=47000 pF
N=NO FILTERS

REFER TO AMPHENOL
CATALOGUE FOR FILTER
PERFORMANCE CHARACTERISTICS



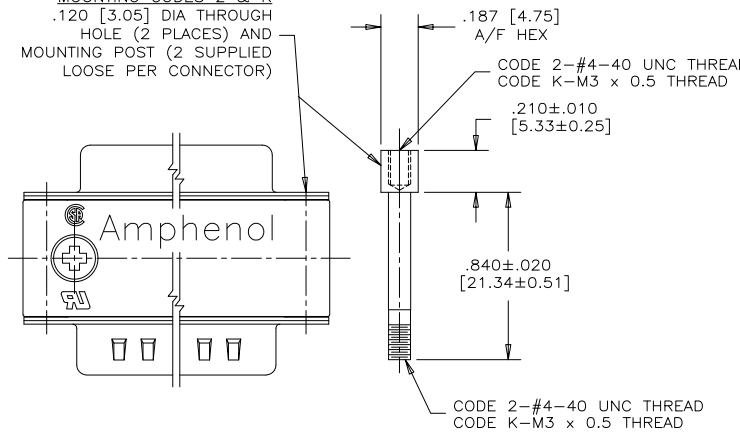
CONTACT POSITION #1



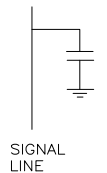
NOTES:

- MATERIALS: - ALL MATERIALS ARE RoHS COMPLIANT
- SHELLS: TIN PLATED STEEL
- CONTACTS: PHOSPHOR BRONZE PLATED WITH GOLD OVER 50µ" [1.27 MICRONS] NICKEL ON MATING AREA. SEE ORDERING CODE.
- INSULATOR: ENGINEERING THERMOPLASTIC, GLASS REINFORCED, FLAMMABILITY RATING UL94V-0, BLACK.
- OUTSIDE SHELLS: ZINC DIECAST, NICKEL PLATED
- MOUNTING HARDWARE: STEEL OR COPPER ALLOY, TIN OR NICKEL PLATED
- CONTACT RESISTANCE: 30 MILLIOHMS MAXIMUM
- INSULATION RESISTANCE: 3000 MEGOHMS MINIMUM
- CURRENT RATING: 5 AMPS MAXIMUM
- OPERATING TEMPERATURE: -40°C TO 85°C.
- TOLERANCE, UNLESS INDICATED OTHERWISE, ±.005 [0.13].

MOUNTING CODES 2 & K
.120 [3.05] DIA THROUGH HOLE (2 PLACES) AND MOUNTING POST (2 SUPPLIED LOOSE PER CONNECTOR)



CAPACITANCE SCHEMATIC FOR EACH POSITION



| SIZE | A±.015 [0.38] | B±.005 [0.13] | C±.005 [0.13] | D±.005 [0.13] |
|------|---------------|---------------|---------------|---------------|
| E09 | 1.213 [30.81] | .643 [16.33] | .666 [16.92] | .984 [24.99] |
| A15 | 1.541 [39.14] | .971 [24.66] | .994 [25.25] | 1.312 [33.32] |
| B25 | 2.088 [53.04] | 1.511 [38.38] | 1.534 [38.96] | 1.852 [47.04] |
| C37 | 2.729 [69.32] | 2.159 [54.84] | 2.182 [55.42] | 2.500 [63.50] |

| | |
|-------------------------------|--------------------|
| DRAWN S.BUENAVIDES | DATE DEC08/05 |
| DESIGNED | |
| CHECKED K.LAMBIE | DEC08/05 |
| I. E. APPRD. | |
| Q. A. APPRD. | |
| DWG. APPRD. | |
| ENG. REL. NO. | |
| REF. EAR 14579 | |
| DIMENSIONS ARE IN INCHES [mm] | CODE ID. NO. 03554 |



Amphenol Canada Corp.
FCE17 SERIES FILTERED D-SUB CONNECTOR, MALE/FEMALE ADAPTER, RoHS COMPLIANT

| | | |
|-----------|--------------------------------|--------------|
| DWG C | DRAWING NO. P-FCE17-XXXAD-XX0X | REV. F |
| SCALE 2/1 | WT. ----- | SURF. ----- |
| | | SHEET 1 of 1 |

THIS DOCUMENT CONTAINS PROPRIETARY INFORMATION AND SUCH INFORMATION MAY NOT BE DISCLOSED TO OTHERS FOR ANY PURPOSE OR USED FOR MANUFACTURING PURPOSES WITHOUT WRITTEN PERMISSION FROM AMPHENOL CANADA CORP.