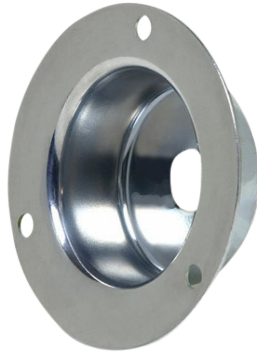


ACCESSORIES FOR TOGGLE SWITCHES

Safety cover prevents accidental actuation, or damage to switch handle.



82468



5543-15



81264-01



81264-05

Description

Littelfuse’s accessories protect both the physical integrity and the performance of our wide portfolio of toggle switches. For example, switch guard 82468 prevents damage to a toggle by covering the actuator, but also secures the switch and system in the Off (or On) position. In serving as a manual ‘lock-out,’ it prevents accidental actuation of the switch and system control is only allowed when the operator has deliberately raised the cover.

Web Resources

Download technical resources at: littelfuse.com/ToggleAccessories

Ordering Information

PART NUMBER	DESCRIPTION
5543-15 *	Toggle Recessed Faceplate Switch Guard
81255 *	Dark Gray Half-Boot Seal
81264 *	Grey Boot Seal
81264-01 *	Black Boot Seal
81264-05 *	Red Boot Seal
82465 *	Toggle Surface Mount Switch Guard
82468 *	Guard only: Does not include a switch
M-598 *	Toggle Marine Emergency Lanyard

* Box and Retail Blister Pack Available



Visit Littelfuse.com for the most up-to-date product information. Littelfuse products are designed for specific applications and should not be used for any purpose (including, without limitation, automotive applications) not expressly set forth in applicable Littelfuse product documentation. Warranties granted by Littelfuse shall be deemed void for products used for any purpose not expressly set forth in applicable Littelfuse product documentation. Littelfuse shall not be liable for any claims or damages arising out of products used in applications not expressly intended by Littelfuse as set forth in applicable Littelfuse product documentation.

Datasheet Replaces Hotfeed Number D-585