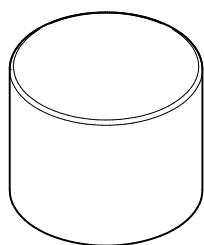
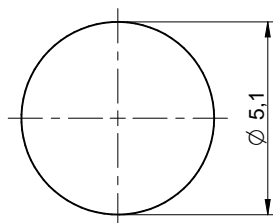
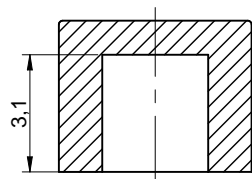
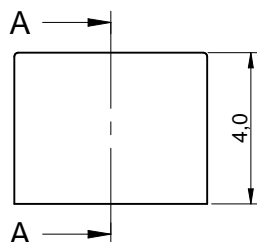


sectional drawing A-A



MATERIAL

> Basic : POM UL HB

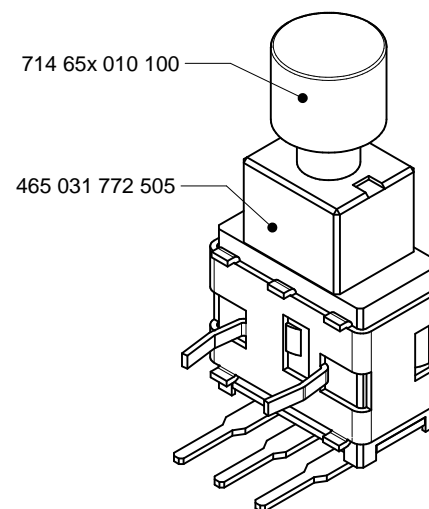
MOUNTING INSTRUCTION

>Cap is only to be fitted after the soldering process.
Soldering process includes reflow or wave soldering

PACKAGING INFORMATION

>Bag

Part number	Color
714 651 010 100	black
714 656 010 100	red



Scale - 5:1

				Würth Elektronik eiSos GmbH & Co. KG EMC & Inductive Solutions	CREATED DaF	CHECKED MTH	GENERAL TOLERANCE DIN ISO 2768-1m	PROJECTION METHOD	SIZE A4
				Max-Eyth-Str. 1 74638 Waldenburg Germany com. +49 79 42 945 - 0	DESCRIPTION AssSw Caps for Push button switch with $\phi 2.8$mm actuator				
					TECHNICAL REFERENCE ORDER CODE 714 65x 010 100				
a	applications isometric view	2015-03-17	DaF	www.we-online.de	SIZE 5.1*5.1mm	STATUS Released	DATE 2015-02-09	BUSINESS UNIT SWITCH	PAGE 1 / 1
REV.	FILE	DATE	BY	eiSos@we-online.de					

