

<div> <div>REV.</div> <div>A</div> </div>		<div> <div>SHEET 1 OF 2</div> <div>CF-020010-73X</div> <div>DOCUMENT NO.</div> </div>	
<div> <div>M</div> <div>REVISIONS</div> </div>			
<div>LTR</div>	<div>DESCRIPTION</div>		<div>DATE</div>
<div>A</div>	<div>INITIAL RELEASE</div>		<div>---</div>

DOCUMENT NO.
CF-020010-73X

SHEET 1 OF 2

A

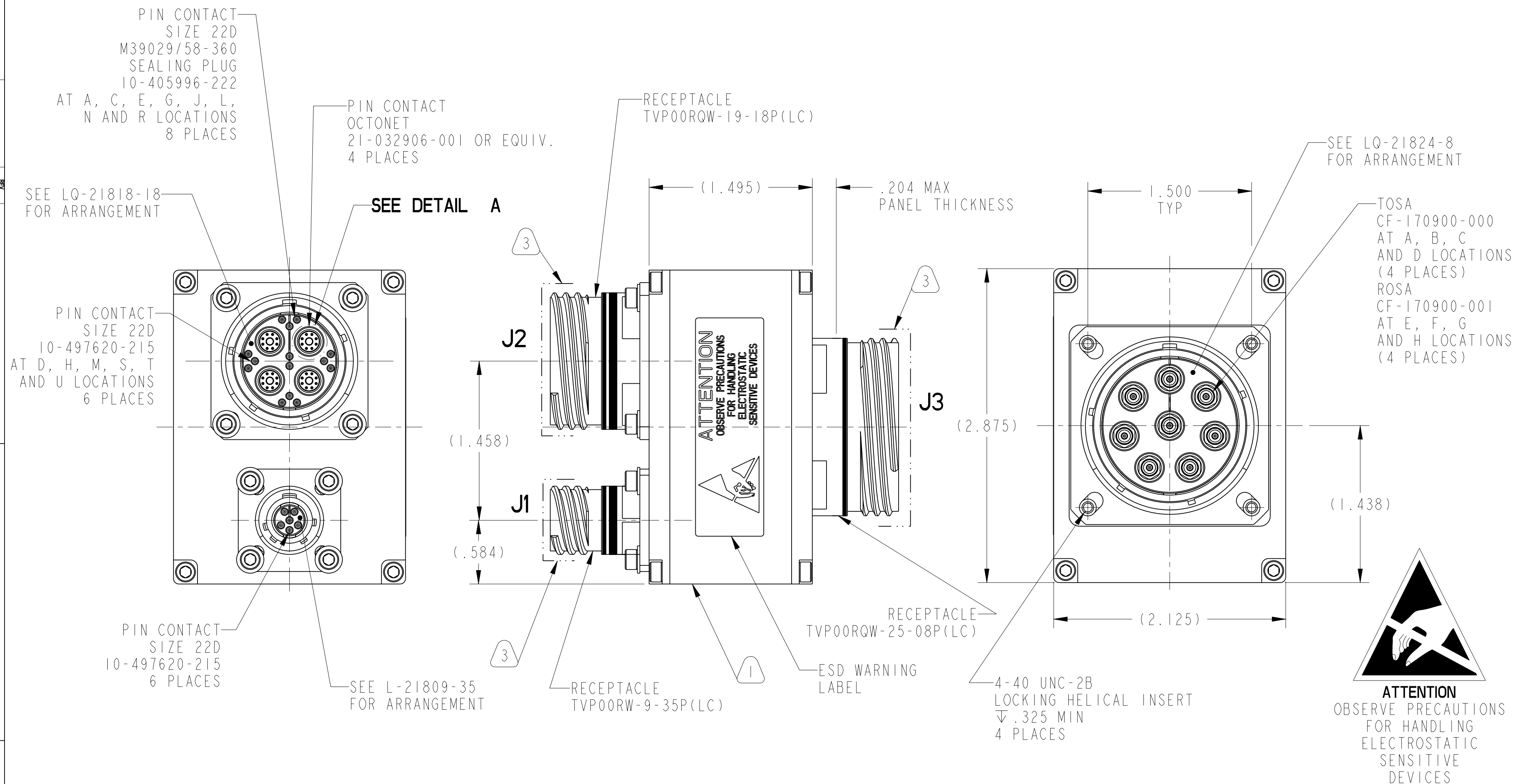
C

B

A

FORMAT: C-U-E-I

CF-020010	PART NUMBER	J1 CONNECTOR KEY ROTATION	J2 CONNECTOR KEY ROTATION	J3 CONNECTOR KEY ROTATION
	CF-020010-73N	N	N	N



SEE SHEET 2

NOTES:

THE USE OF THIS DOCUMENT IS UNLIMITED.
HOWEVER, DOCUMENTS REFERENCED HEREON
MAY CONTAIN LIMITED RIGHTS DATA.

RELEASED / Mar . 28 2017, 1:14:51 PM

DOCUMENT NO.
CF-020010-73X

SHEET 1 OF 2


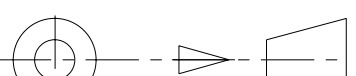
REV
A

	N / A
--	-------

NEXT ASSEMBLY

PRO/ENGINEER INFORMATION

Pro/e Model Used:
CF-020010-73X.ASSEM
Drawing Name:
CF-020010-73X

UNLESS OTHERWISE SPECIFIED		SPECIFICATIONS		POS	QTY	PART NUMBER		DESCRIPTION		NOTE		
LINEAR DIMENSIONS ARE IN INCHES TOLERANCES: .XXXX = ±.0005 ANGLES= ±2° .XXX = ±.010 .XX = ±.03 .X = ±.1 ----- DIM.& TOL. PER ASME Y14.5M; DRM PER MIL-STD-31000; OTHER Amphenol Stds. PER 9-3800 LEGENDS:  = FLAG NOTE CALL OUT REFERENCE ONLY		MATERIAL SPEC.		APPROVALS		DATE		PARTS LIST AMPHENOL CORPORATION 40-60 DELAWARE AVENUE SIDNEY, N.Y. 18338 MEDIA CONVERTER 1GBASE-T TO 1GBASE-SX QUAD PORT, O.D. CAD PLATED				
		N/A		PREPARED BY I. NASH ENGINEER IN CHARGE W. LEE DESIGN MANAGER J. PAUL DESIGN ACTIVITY GROUP CI		03-Mar-17						
		PROCESS SPEC.		THIRD ANGLE PROJECTION				SIZE C	CAGE CODE 77820	DOCUMENT NO. CF-020010-73X		REV. A
		9-9172-2 9-3856-5						SCALE: 1.5:1		REF. CF-020010-68X		SHEET 1 OF 2

DOCUMENT NO.
CF-020010-73X

7

A

Engineering PDM Information
For Reference Only

A REV.

SHEET 1 OF 2

01

DOCUMENT NO.
CF-020010-73X

4

3

2

REV. A

SHEET 2 OF 2

DOCUMENT NO. CF-020010-73X

DOCUMENT NO. CF-020010-73X

SHEET 2 OF 2

REV. A

J2 CONNECTOR

J1 CONNECTOR

FRONT ISO VIEW

SCALE 1:1

J3 CONNECTOR

REAR ISO VIEW

SCALE 1:1

PIN 1

PIN 8

PIN 7

PIN 6

PIN 2

PIN 3

PIN 4

PIN 5

DETAIL A

J2 CONNECTOR FRONT VIEW

PIN POSITION

SCALE 10:1

1. ASSEMBLY CONTAINS ELECTROSTATIC DISCHARGE (ESD) SENSITIVE COMPONENTS. ASSEMBLY SHALL BE HANDLED, PACKAGED, AND SHIPPED TO MEET REQUIREMENTS OF ANSI/ESD-S-20.20 AND IPC-A-610.

3. PROTECTIVE CAPS SHALL BE INSTALLED PRIOR TO SHIPPING.

2. PACKAGE LABEL SHALL CONTAIN THE SAME INFORMATION SHOWN IN NOTE 1.

1. STAMP AMPHENOL 77820, SIX DIGIT SERIAL NUMBER, AND PART NUMBER ON INDICATED SURFACE. STAMPING PER 9-3856-5. SERIAL NUMBER PER 9-9172-2.

EXAMPLE: (FOR NORMAL KEY CONVERTER NUMBER 8 BUILT ON APRIL 27, 2017)

AMPHENOL 77820
171708
CF-020010-73N

NOTES:

THE USE OF THIS DOCUMENT IS UNLIMITED. HOWEVER, DOCUMENTS REFERENCED HEREON MAY CONTAIN LIMITED RIGHTS DATA.

RELEASED / Mar . 28 2017, 1:14:51 PM

DOCUMENT NO. CF-020010-73X

SHEET 2 OF 2

REV. A

3

2

1

J1 CONNECTOR

ID	DESCRIPTION
1	CHASSIS_GND
2	CHASSIS_GND
3	CHASSIS_GND
4	CHASSIS_GND
5	28VIN
6	GND

J2 CONNECTOR

ID	DESCRIPTION
B1	CH4_A_1GBASE-T_P
B2	CH4_A_1GBASE-T_N
B3	CH4_B_1GBASE-T_P
B4	CH4_B_1GBASE-T_N
B5	CH4_C_1GBASE-T_P
B6	CH4_C_1GBASE-T_N
B7	CH4_D_1GBASE-T_P
B8	CH4_D_1GBASE-T_N
F1	CH3_A_1GBASE-T_P
F2	CH3_A_1GBASE-T_N
F3	CH3_B_1GBASE-T_P
F4	CH3_B_1GBASE-T_N
F5	CH3_C_1GBASE-T_P
F6	CH3_C_1GBASE-T_N
F7	CH3_D_1GBASE-T_P
F8	CH3_D_1GBASE-T_N
K1	CH2_A_1GBASE-T_P
K2	CH2_A_1GBASE-T_N
K3	CH2_B_1GBASE-T_P
K4	CH2_B_1GBASE-T_N
K5	CH2_C_1GBASE-T_P
K6	CH2_C_1GBASE-T_N
K7	CH2_D_1GBASE-T_P
K8	CH2_D_1GBASE-T_N
P1	CH1_A_1GBASE-T_P
P2	CH1_A_1GBASE-T_N
P3	CH1_B_1GBASE-T_P
P4	CH1_B_1GBASE-T_N
P5	CH1_C_1GBASE-T_P
P6	CH1_C_1GBASE-T_N
P7	CH1_D_1GBASE-T_P
P8	CH1_D_1GBASE-T_N

J3 CONNECTOR

ID	DESCRIPTION
A	CH_2_1GBASE-SX_TX
B	CH_1_1GBASE-SX_TX
C	CH_3_1GBASE-SX_TX
D	CH_4_1GBASE-SX_TX
E	CH_4_1GBASE-SX_RX
F	CH_3_1GBASE-SX_RX
G	CH_2_1GBASE-SX_RX
H	CH_1_1GBASE-SX_RX

REV. A

SHEET 2 OF 2

DOCUMENT NO. CF-020010-73X

SIZE C

CAGE CODE 77820

DOCUMENT NO. CF-020010-73X

REV. A

SCALE: 1.5:1

REF: CF-020010-68X

SHEET 2 OF 2