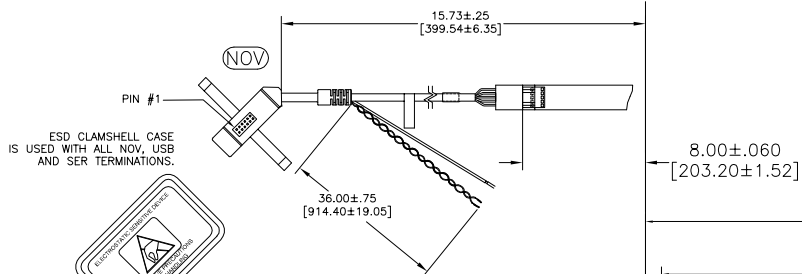


OGA DIAGONAL: 24.82 [630.48]  
 VA DIAGONAL: 23.83 [605.19]  
 PA DIAGONAL: 22.45 [570.18]

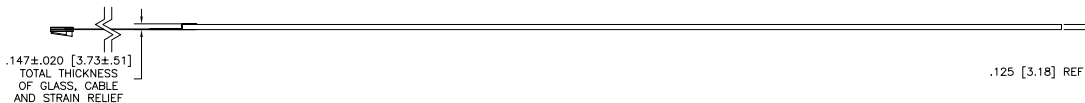
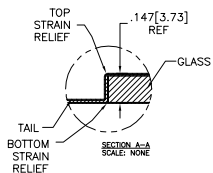
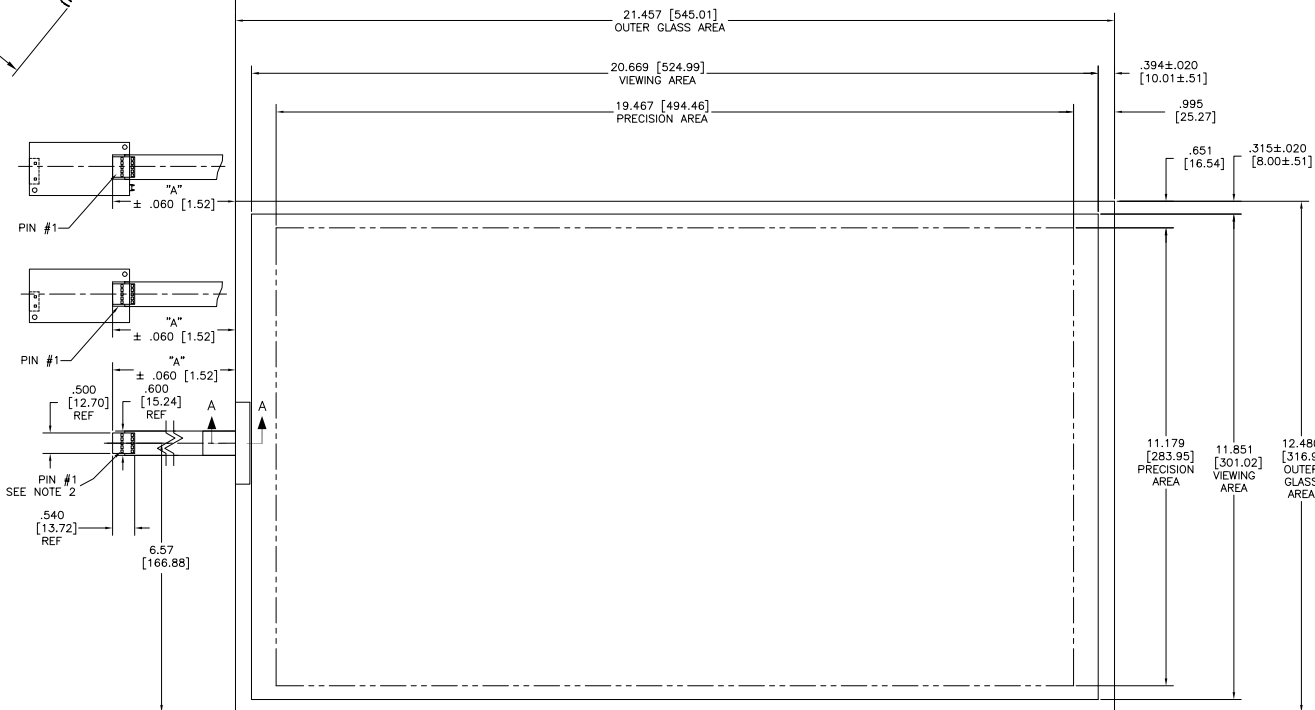
| TOP LEVEL NUMBER | US NUMBER      | TYPE  | DIM "A" (TOTAL GLASS TO CONNECTOR) | A/G FINISH | PROD SPEC |
|------------------|----------------|-------|------------------------------------|------------|-----------|
| 17-9051-205      | 98-0003-2687-0 | FFC   | 8.00" [203.20]                     | AG500      | 23655     |
| 17-9051-227      | 98-0003-2689-6 | SER   | 8.00" [203.20]                     | AG500      | 23655     |
| 17-9051-206      | 98-0003-2688-8 | NOV   | SEE DWG                            | AG500      | 23655     |
| 17-9051-226      | 98-0003-3035-1 | USB R | 8.00" [203.20]                     | AG500      | 23655     |



**(SER)**  
 EXII-7720SC  
 98-0003-2217-6  
 SERIAL CONTROLLER  
 SOLDER SIDE

**(USB R)**  
 EXII-7760UC  
 98-0003-2814-0  
 USB CONTROLLER  
 SOLDER SIDE

**(FFC)**



NOTES:

1. WEIGHT OF GLASS IN GRAMS: 1248±10%
2. NICOMATIC HOUSING P/N: 0L05  
 NICOMATIC RECEPTACLES (PINS) MATTE TIN PLATED P/N: 14106-12  
 HOUSING ORIENTED WITH LATCH DOWN

| PINOUT |      |
|--------|------|
| 1      | LR   |
| 2      | LL   |
| 3      | SHLD |
| 4      | UL   |
| 5      | UR   |

|   |   |   |  |
|---|---|---|--|
| UNITS<br>INCHES [MM]  | 3M TOUCH SYSTEMS<br>METHUEN, MA<br>USA<br>© COPYRIGHT 2004<br>THIS DOCUMENT IS COPYRIGHTED PROPERTY OF THE 3M COMPANY AND MAY NOT BE REPRODUCED WITHOUT 3M WRITTEN PERMISSION OR USED OR DISCLOSED FOR OTHER THAN 3M AUTHORIZED PURPOSES. | TITLE<br>MARKETING DRAWING<br>SCT32NN 23.83" W            |  |
| TOLERANCES UNLESS OTHERWISE SPECIFIED<br>.X ±<br>.XX ±.03 [.76]<br>.XXX ±.015 [.38]<br>ANGLES ±1° |   | DRAWN MTD 03/16/06<br>DO NOT SCALE DRAWING<br>SCALE 1 = 1 | CAD FORMAT AUTOCAD<br>SHEET 1 OF 1<br>SIZE C<br>DOCUMENT NO. 31379-MKT |