

RM Cores (6278180121)

Part Number: 6278180121

78 RM CORE SET

RM (Rectangular Modulus) cores allow better shielding than E type geometries while also providing easier winding accessibility and better power dissipation than a pot core configuration. Fair-Rite's standard RM cores all have a solid center post and standard height, low profile and alternate materials are available upon request.

□ RM cores can be supplied with the center post gapped to a mechanical dimension or an A_L value.

[Catalog Drawing](#)

[3D Model](#)

Weight indicated is per pair or set.

Weight: 5.5 (g)

Dim	mm	mm tol	nominal inch	inch misc.
A	17.6	± 0.30	0.693	—
B	6.2	± 0.10	0.244	—
C	7.9	± 0.30	0.311	—
D	4.25	± 0.15	0.167	—
E	12.65	± 0.25	0.498	—
F	6.25	± 0.15	0.246	—
G	8.4	min	0.331	min
J	14.4	± 0.30	0.567	—

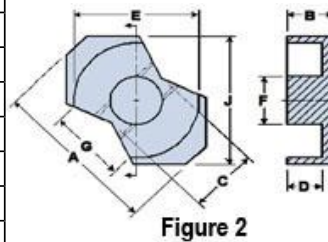



Figure 2

Chart Legend

$\Sigma l / A$: Core Constant, l_e : Effective Path Length, A_e : Effective Cross- Sectional Area, V_e : Effective Core Volume

A_L : Inductance Factor 

Explanation of Part Numbers: Digits 1 & 2 = product class and 3 & 4 = material grade.

Electrical Properties	
A_L (nH)	2400 ±25%
A_e (cm ²)	0.342
$\Sigma l / A$ (cm ⁻¹)	9.3
l_e (cm)	3.1
V_e (cm ³)	1.06
A_{min} (cm ²)	0.312

A_L value is measured at 1 kHz, B < 10 gauss.