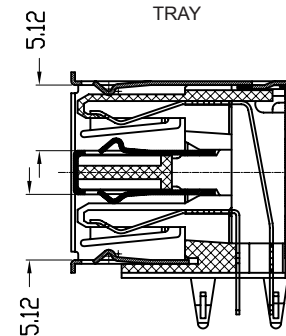
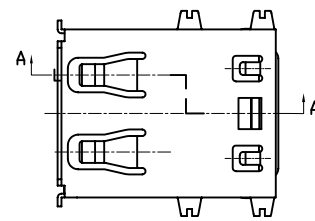
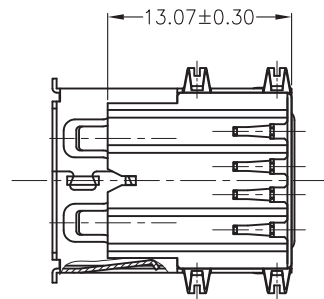


RECOMMENDED P.C.B HOLE LAYOUT  
TOP VIEW(TOLERANCE:±0.10)



SECTION A-A  
SCALE 1:1

TECHNICAL CHARACTERISTICS

MATERIAL  
INSULATOR: PBT  
FLAMABILITY RATING: UL94-V0  
COLOR: WHITE  
CONTACT MATERIAL: COPPER ALLOYS  
CONTACT TYPE: STAMPED  
CONTACT PLATING: SELECTIVE GOLD  
SHIELDING: BRASS Ni PLATED  
QUALITY CLASS: 1500 MATING CYCLES

ENVIRONMENTAL  
OPERATING TEMPERATURE: -40 UP TO 105°C  
COMPLIANCE: LEAD FREE AND ROHS

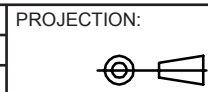
ELECTRICAL  
CURRENT RATING: 1A  
WORKING VOLTAGE: 30V  
INSULATOR RESISTANCE: >1000 MOHM  
DIELECTRIC WITHSTANDING VOLTAGE: 750V AC/MN  
CONTACT RESISTANCE: 20 MOHM MAX

STANDARD  
CERTIFIED: E323964 / MODEL NUMBER 614-60

SOLDERING  
WAVE PROCESS ONLY

PACKAGING  
TRAY

RoHS Compliant			
J	15-FEV-13	DESIGNATION	AR
I	25-SEP-12	DESCRIPTION	GG
H	09-JAN-12	NEW DRAWING	GG
REV	DATE	FILE	BY



APPROVAL: RJ

GENERAL TOLERANCE  
.X = +/- 0.2  
.XX = +/- 0.15



UNIT: MM  
SCALE:  
SHEET: 1/1  
DRAW: MIKE

DESCRIPTION: DUAL USB 2.0 TYPE A HORIZONTAL  
WERI PART NO: 614 008 260 21

SIZE  
**A4**