

Aluminum Electrolytic Capacitors - Accessories (Vishay BCcomponents)

RESISTORS FOR TERMINAL MOUNTING

Resistors are used to balance the voltage over a series connection of screw terminal capacitors or to ensure discharge to a safe voltage after power down. Vishay provides the [CMS series of resistors](#), which are suited for direct mounting on the terminals of screw terminal capacitors.

| DIMENSIONS in inches [millimeters] | | | | | | | |
|------------------------------------|-----------------------|------------------------------|---------------------|---------------------|---------------------|--------------------------------|--------------------------------|
| | | | | | | | |
| DIAMETER | MODEL | CORE DIMENSIONS in inch [mm] | | | | TERMINAL DESIGNATION | |
| | | A TYPICAL | B ± 0.031 [0.79] | C ± 0.062 [1.59] | M ± 0.0118 [0.3] | CM HOLE DIAMETER TYPICAL | CA HOLE DIAMETER TYPICAL |
| Ø 50 mm | CMS16 | 0.562 [14.27] | 0.312 [7.92] | 1.250 [31.75] | 0.875 [22.23] | 0.196 [4.98] | 0.265 |
| Ø 65 mm | CMS20 | 0.562 [14.27] | 0.312 [7.92] | 1.75 [44.45] | 1.13 [28.7] | 0.196 [4.98] | 0.265 [6.73] |
| Ø 76 mm | CMS22 | 0.562 [14.27] | 0.312 [7.92] | 1.75 [44.45] | 1.254 [31.85] | 0.196 [4.98] | 0.265 [6.73] |
| Ø 90 mm | | | | | | | |

MOUNTING ACCESSORIES

CLAMPS FOR ST TYPES

To facilitate vertical mounting, a series of rigid clamps is available. These are made of zinc plated steel, chromium (III) passivated, or stainless steel (Ø D = 76 mm).

The clamps have either two or three mounting lugs, may be easily slipped over the capacitor and then clamped with a nut and bolt. Five types of clamps are available, one for each case diameter.

They are delivered without nuts or bolts.

To avoid damaging the insulation sleeve, do not overtighten the clamp screw.



RoHS
COMPLIANT

DIMENSIONS in millimeters **AND AVAILABLE FORMS**

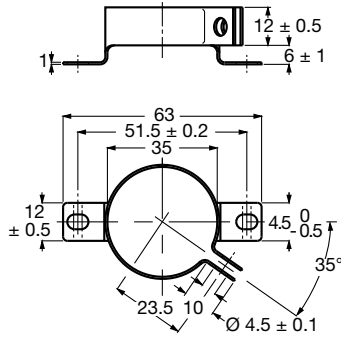


Fig. 1 - Dimensional outline of clamp for case Ø D = 35 mm

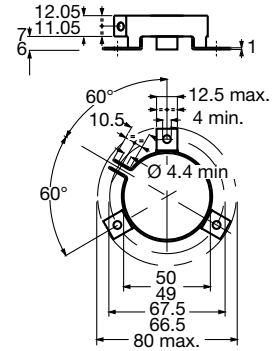


Fig. 2 - Dimensional outline of clamp for case Ø D = 50 mm

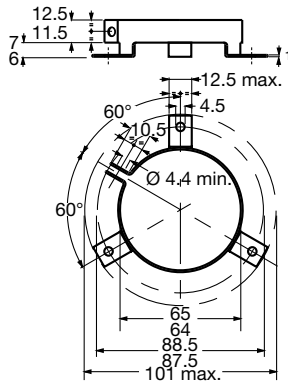


Fig. 3 - Dimensional outline of clamp for case Ø D = 65 mm

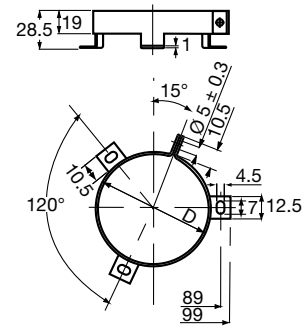


Fig. 4 - Dimensional outline of clamp for case Ø D = 76 mm

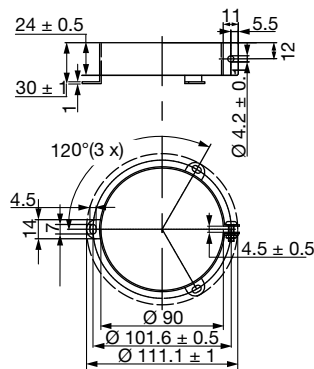


Fig. 5 - Dimensional outline of clamp for case Ø D = 90 mm

Table 1

| MOUNTING CLAMPS FOR SCREW TERMINALS | |
|--|----------------|
| CASE DIAMETER | ORDERING CODE |
| 35 | MAL804324031E3 |
| 50 | MAL804324051E3 |
| 65 | MAL804324061E3 |
| 76 | MAL804323321E3 |
| 90 | MAL804324921E3 |

NUTS AND WASHERS FOR STB-VERSIONS

When mounting with the bolt, which is an integral part of the case, standard metal M8 and M12 nuts and washers may be used; the maximum permissible torque is 4 Nm for M8 nuts and 10 Nm for M12 nuts.

If insulated mounting is required, synthetic nuts and rubber washers are available; for these nuts the maximum permissible torque is 2 Nm (M8) and 4 Nm (M12).

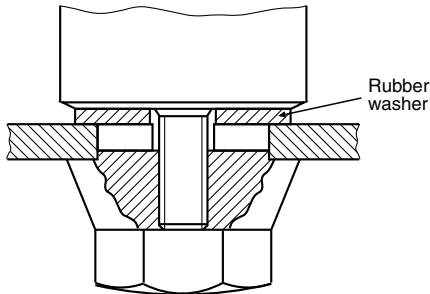
DIMENSIONS in millimeters AND AVAILABLE FORMS


Fig. 6 - Insulated mounting

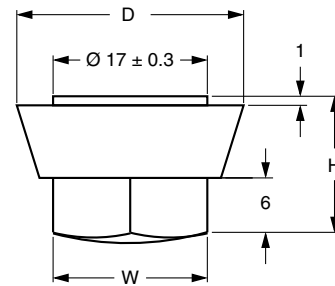


Fig. 7 - Synthetic cap nut; see Table 2 for dimensions D, H and W

Table 2

| SYNTHETIC CAP NUTS | | | | | | |
|---------------------------|--------|--------|--------|-----------------------|--------------------------|----------------|
| CASE DIAMETER (mm) | THREAD | D (mm) | H (mm) | W ⁽¹⁾ (mm) | MIN. THREADED DEPTH (mm) | ORDERING CODE |
| 35 | M8 | 25 | 15 | 17 | 11.5 | MAL804305561E3 |
| ≥ 50 | M12 | 30 | 20 | 19 | 15.5 | MAL804305571E3 |

Note

⁽¹⁾ Dimension W is measured across flats.

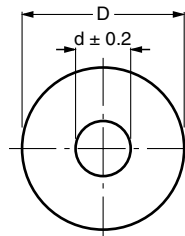


Fig. 8 - Rubber washer; thickness 2 mm

| RUBBER WASHERS | | |
|-----------------------|--------|----------------|
| D (mm) | d (mm) | ORDERING CODE |
| 34 | 8.4 | MAL804305591E3 |
| 49 | 13.0 | MAL804305531E3 |
| 64 | 13.0 | MAL804305521E3 |
| 74 | 13.0 | MAL804313001E3 |
| 88 | 13.0 | MAL804329961E3 |

CLAMPS FOR SL-VERSIONS, $\varnothing D = 25 \text{ mm}, 30 \text{ mm}, 35 \text{ mm}, \text{ and } 40 \text{ mm}$

To facilitate vertical mounting, a series of rigid clamps made of zinc plated steel is available. These are made of zinc plated steel, chromium (III) passivated.

The clamps have two mounting lugs, may be easily slipped over the capacitor and then clamped with a nut and bolt. Four types of clamps are available, one for each case diameter.

They are delivered without nuts or bolts.

To avoid damaging the insulation sleeve, do not overtighten the clamp screw.


RoHS
COMPLIANT

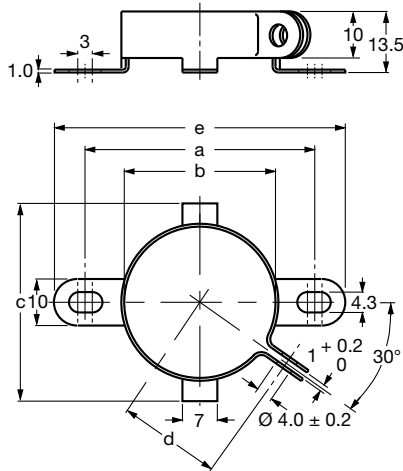
DIMENSIONS in millimeters


Fig. 9 - Dimensional outline of clamp for case $\varnothing D = 25 \text{ mm}, 30 \text{ mm}$ and 40 mm

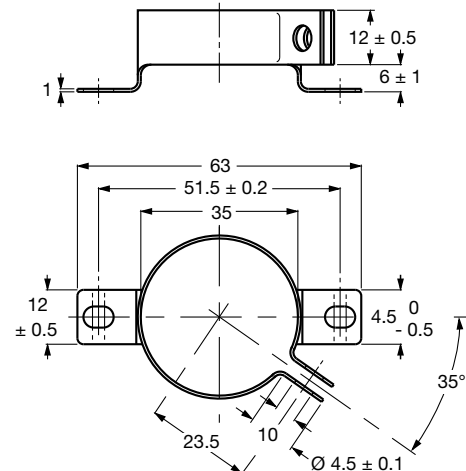


Fig. 10 - Dimensional outline of clamp for case $\varnothing D = 35 \text{ mm}$

Table 3

| MOUNTING CLAMPS FOR SOLDER LUGS | | | | | | |
|--|----------------|---------------|---------------|---------------|---------------|----------------------|
| CASE DIAMETER (mm) | a (mm) | b (mm) | c (mm) | d (mm) | e (mm) | ORDERING CODE |
| 25 | 41.5 ± 0.2 | 25 | 35 | 18.5 | 56 | MAL804324011E3 |
| 30 | 46.5 ± 0.2 | 30 | 40 | 21 | 61 | MAL804324021E3 |
| 35 | 51.5 ± 0.2 | 35 | - | 23.5 | 63 | MAL804324031E3 |
| 40 | 56.5 ± 0.2 | 40 | 50 | 26 | 71 | MAL804324041E3 |