

STRADA-T-DN-OSL LENSES FOR OSRAM OSLOM LEDs



- Specially designed for Osram Oslo series of LEDs.
- Wide BATWING design with very uniform light distribution. Planned to be used mixed with Strada-T-DW lenses for optimal streetlight patterns.
- ASYMMETRICAL design with excellent usable efficiency and beam control.
- Efficiently and easily fulfilling different requirements for urban and road lighting when mixed with Strada-T-DW.
- Comes with integrated positioning pins.
- Lens material optical grade PMMA. Allows use of high current and temperature conditions.
- Best available optical efficiency, approximately 92%.
- Fastening to heat sink with or without PU foam adhesive tape of automotive grade, please select which suits the best for your needs.

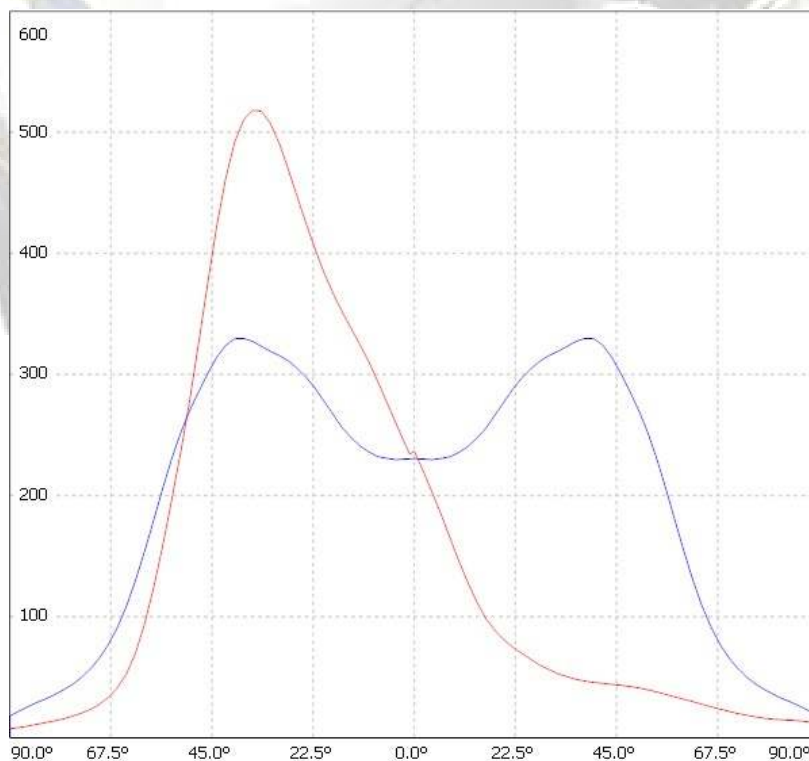
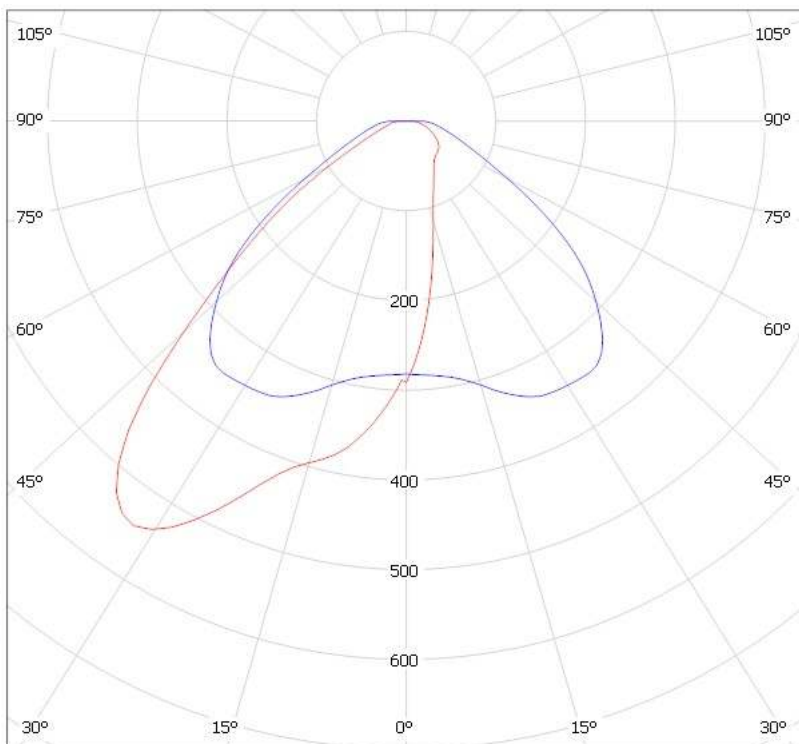
LENS TYPES

NAME	ORDERING CODE	FWHM Angle
Strada-T-DN-OSL	C11415_Strada-T-DN-OSL	approx. $\pm 56^\circ$
Strada-T-DN-OSL-TAPE	CA11416_Strada-T-DN-OSL-tape	approx. $\pm 56^\circ$

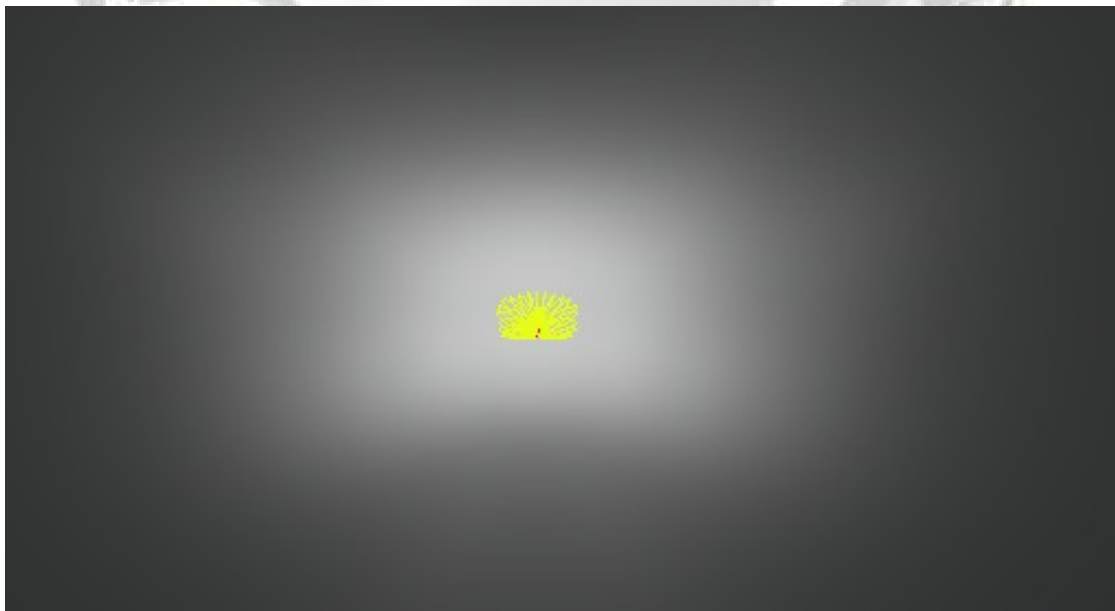
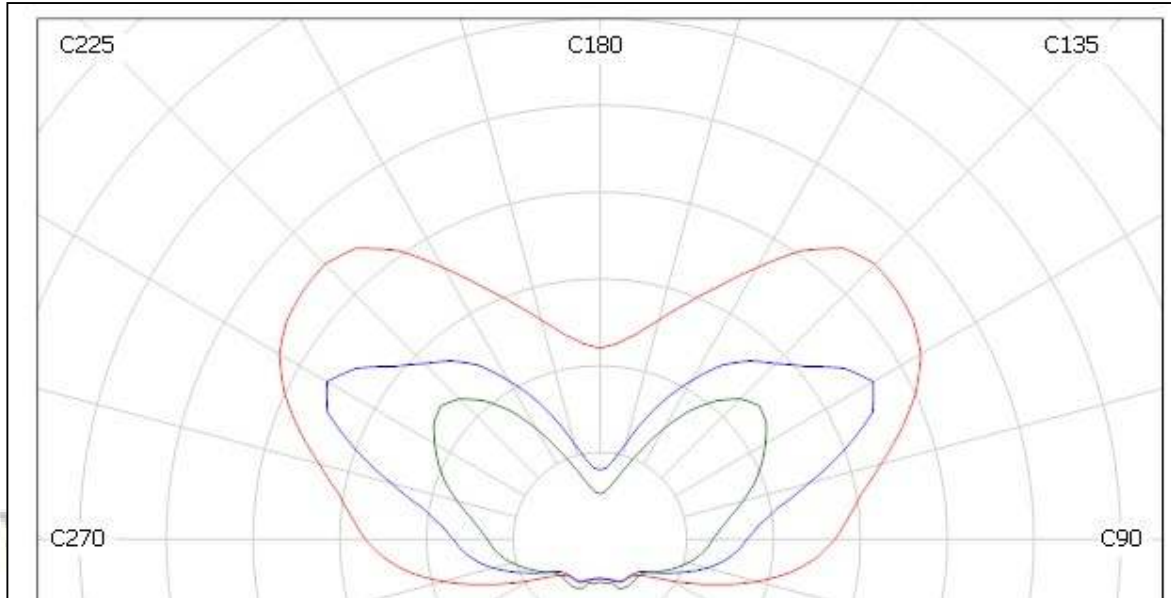
Eulumdat & IES files available by request.

© Ledil Oy – PRELIMINARY - Subject to change without prior notice

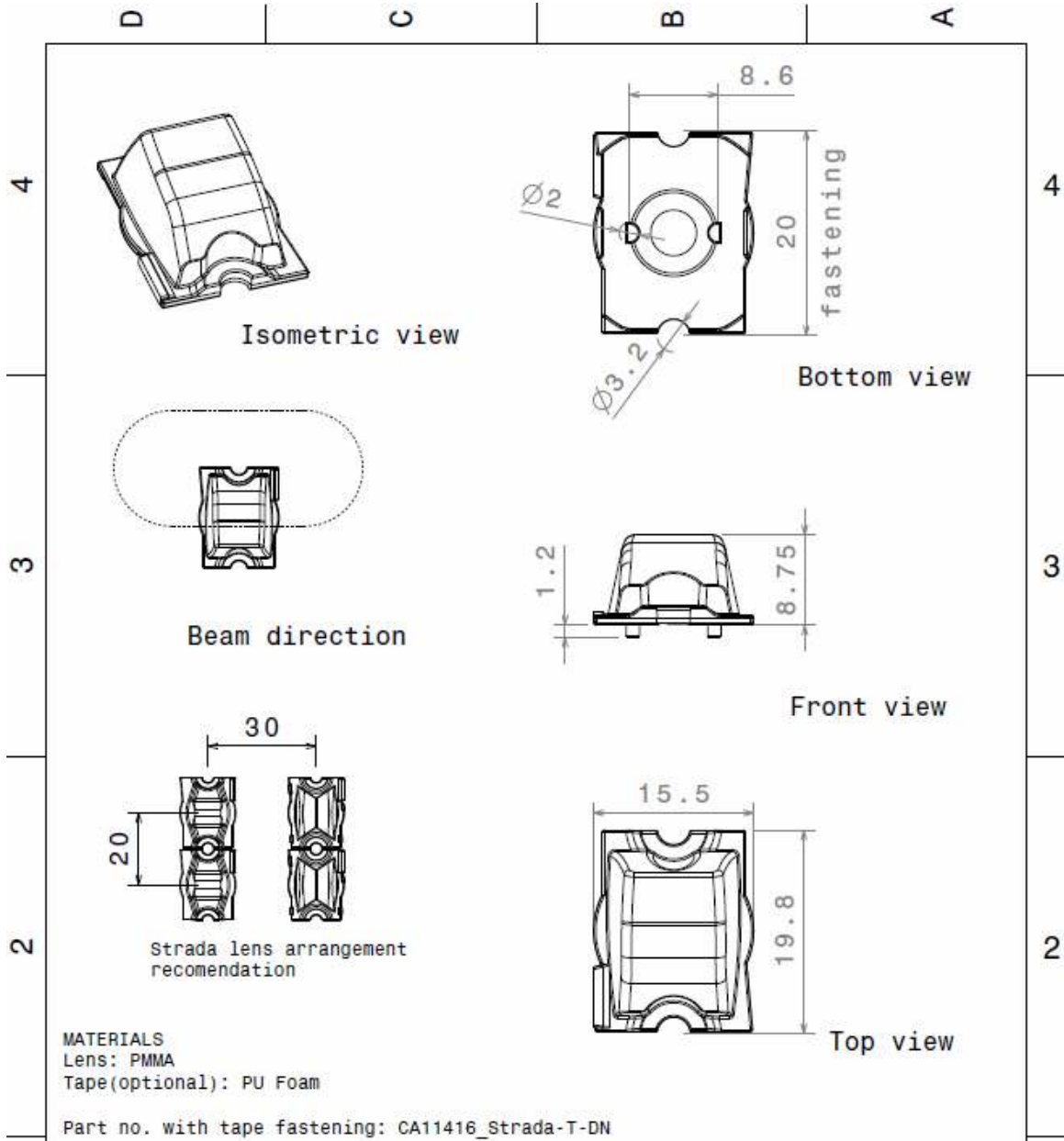
MEASUREMENT DATA & DRAWING



© Ledil Oy - PRELIMINARY - Subject to change without prior notice



© Ledil Oy – PRELIMINARY - Subject to change without prior notice



This drawing is our property. It can't be reproduced or communicated without our written agreement.		Ledil Oy Tehdaskatu 13 FIN-24100 SALO Finland	
DRAWING TITLE			
Datasheet Strada-T-DN Lens			
DRAWN BY ol	DATE 14.05.2010	DRAWING NUMBER C11415	
CHECKED BY pv	DATE 14.05.2010		
DESIGNED BY hh		SCALE 2:1	WEIGHT(g)
		SHEET 1/1	

© Ledil Oy – PRELIMINARY - Subject to change without prior notice