

RG 85 III - Signal indicator, without lens

3.99.400.100/5000

Please order lenses separately.



Dimensions

Length	64 mm
Mounting grid min.	55 x 35 mm
Width	34 mm

Mechanical design

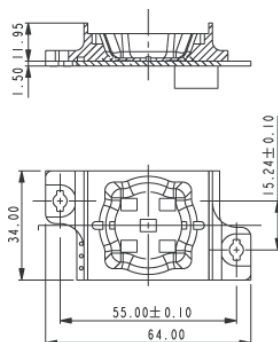
Version	according to lens
Mounting	on U-rails or single mounting
Terminals	8-pin Micro-Match® female connector
Illumination	5 LED green

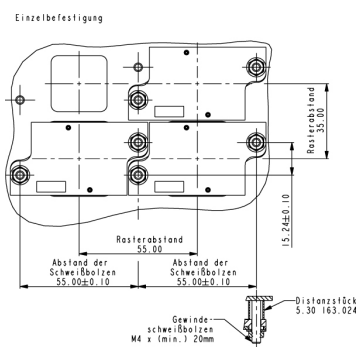
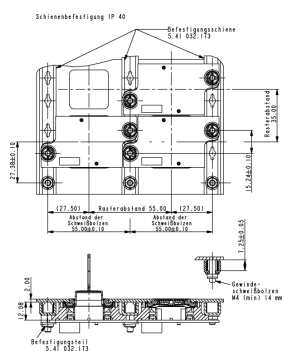
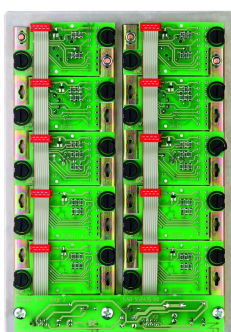
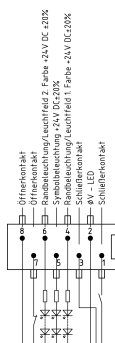
Electrical characteristics

Operating voltage for LED	24 ^{±20%} V
Input current LED	depending on LED color 20 - 30 mA

Other specifications

Ambient temp. operating min.	-25 °C
Ambient temp. operating max.	+70 °C
Storage temperature min.	-40 °C
Storage temperature max.	+80 °C
Environmental resistance	acc. to IEC 60068-2-14, -30, -33 and -78
Degree of protection rail mounting	IP40 (DIN EN 60529)
Degree of protection single mounting	IP65 (DIN EN 60529)
Flammability of materials	according to UL 94 HB
ROHS compliant	yes
REACH compliant	yes





Technical data are approximate and intended solely for general orientation in the selection of a product.
Subject to modifications and errors. Images and other graphics may only be similar.
For more information, refer to www.rafi.de chapter Imprint / Data Protection.

