

Hysteretic DC/DC Controller Demoboard

General Description

The Supertex HV9150DB1 demoboard is for the evaluation of the HV9150 hysteretic DC/DC controller. This demoboard consists of all necessary components to create a 5V to 200V step up converter capable of providing 600mW of output power.

This DC/DC converter has a single voltage input and a single voltage output. The demoboard is configured to use the internal voltage reference. In addition, the user also has access to an external voltage reference pin if it is preferred. The output voltage can be adjusted from 50V to 200V by adjusting the potentiometer next to the output terminals.

The potentiometer is used in the resistor feedback network for demonstration purposes.

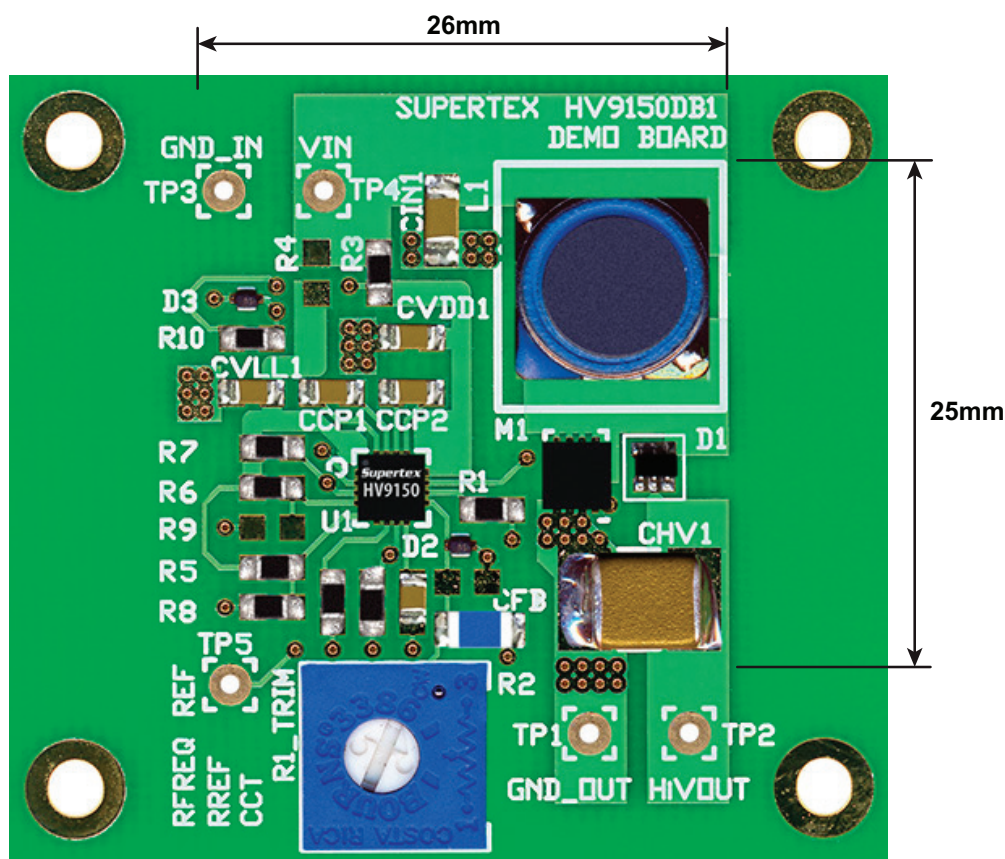
The demoboard shows that all necessary components for this 600mW converter can be packed into a square inch, single sided, PCB area.

To ensure a stable operation of the DC/DC converter, it is recommended that a low ESR bulk decoupling capacitor be connect at the input voltage supply.

Specifications

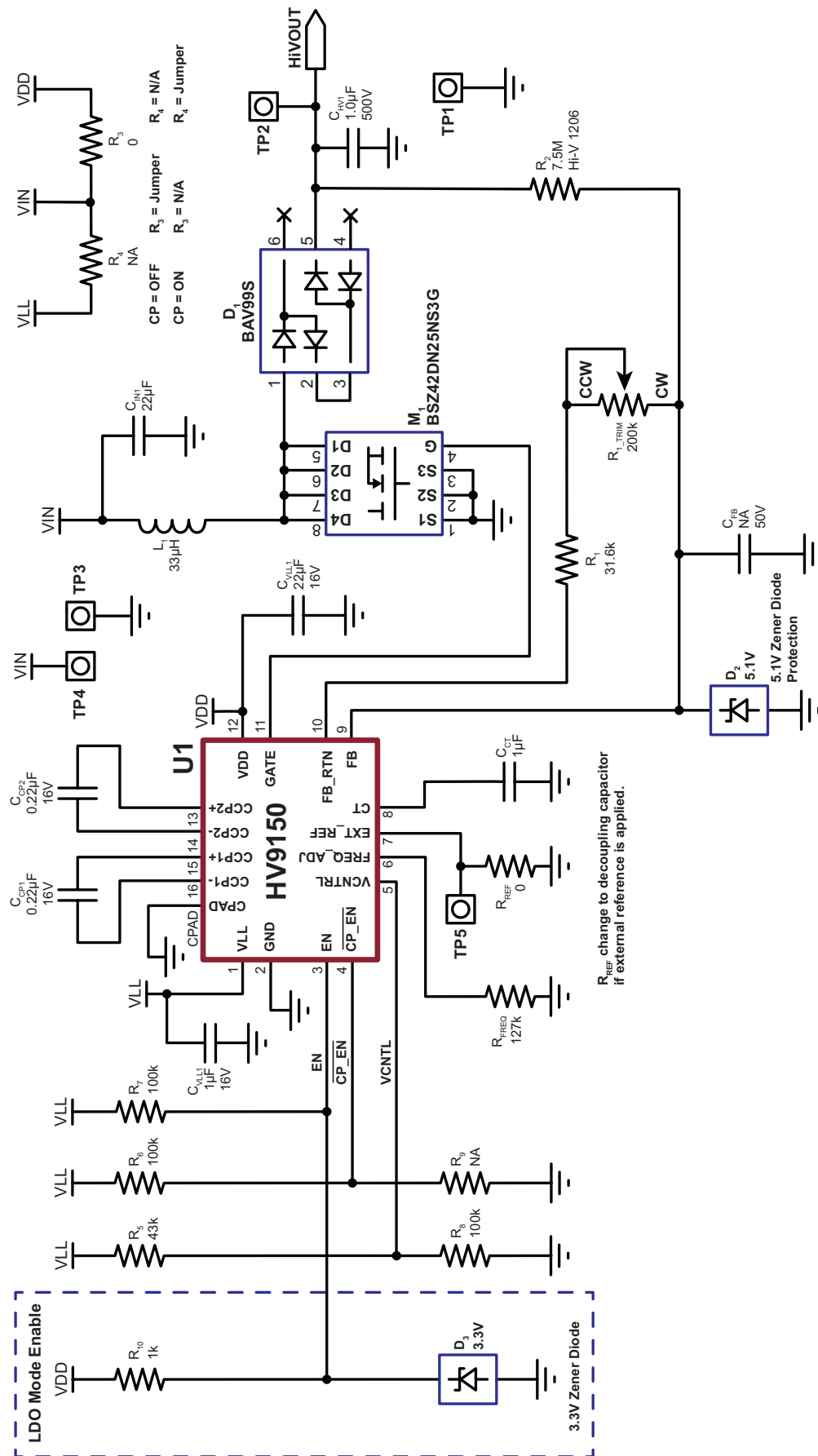
Parameter	Value
V_{IN} input voltage	4.75V to 5.25V
V_{OUT} output voltage	50V to 200V
I_{OUT} output current	3mA max at 200V
Operating frequency	200kHz typical

Board Layout



Actual Dimensions: 46mm x 41mm

HV9150DB1 Circuit Schematic



LDO (Linear Regulator) and CP (Charge Pump) Mode Option

The HV9150 can operate in either LDO or CP modes. The CP mode is preferred if the voltage of the input supply is lower than 5V. The internal charge pump converter can generate a higher voltage supply to drive the gate driver. If a higher supply voltage is available, the LDO mode should be chosen. The following table shows the options to select between LDO and CP modes.

The R_{10} and D_3 form an independent 3.3V output startup circuit to set the device to LDO mode operation. These components are not required on the demoboard if the CP mode operation is preferred.

Part Reference	LDO Mode	CP Mode
R_3	0 Ω	Not installed
R_4	Not installed	0 Ω
R_{10}	1k Ω	Not installed
D_3	3.3V Zener	Not installed
R_7	Not installed	100k Ω

Internal and External Voltage Reference Option

The HV9150 can be configured to use either an internal or external voltage reference. The demoboard is set to use the internal voltage reference. In order to use external voltage reference, the user can replace the R_{REF} 0 Ω jumper with a 0.1 μ F decoupling capacitor and connect the external reference to the TP5 terminal. Please be aware that the EN pin is required to toggle once to activate the device to enable the external voltage reference option.

Modification to 300V Output Operation

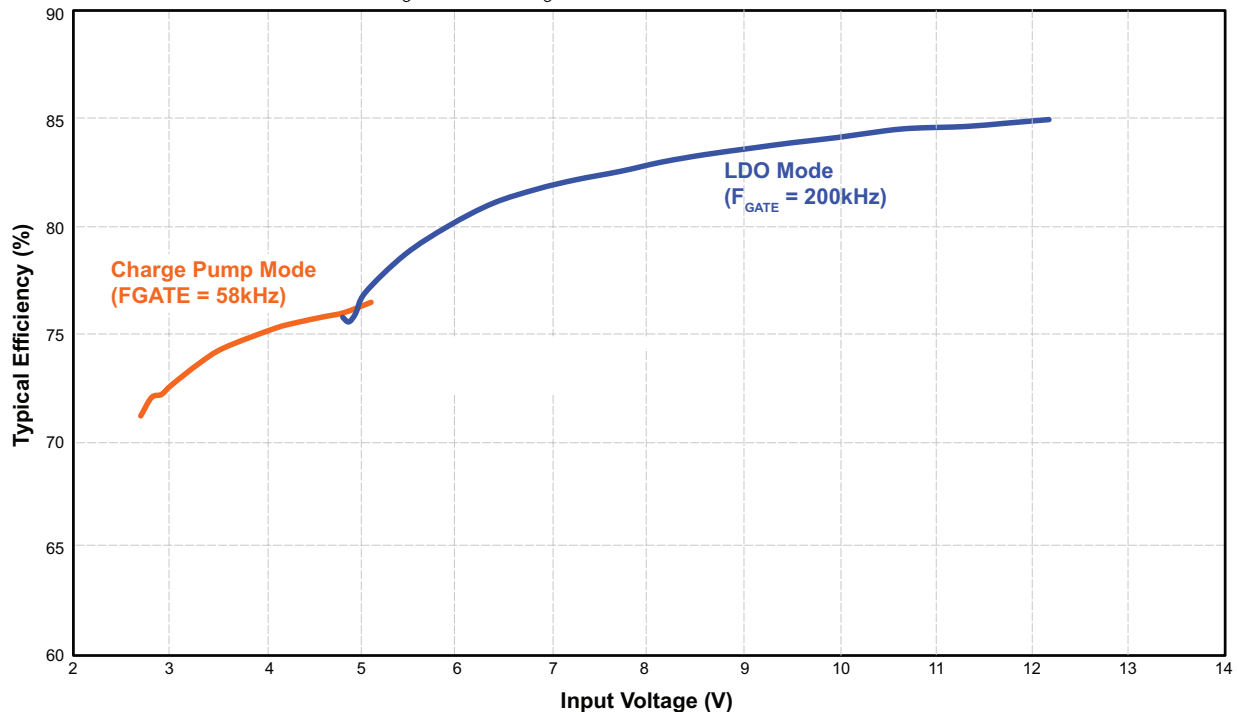
The demoboard can be reconfigured to generate a 300V output voltage. The user can replace the MOSFET driver with one rated at 300V and adjust the value of potentiometer to obtain a 300V output voltage. Since the ON-resistance is different, the maximum output current may change. The user can adjust the switching frequency or duty cycle to compensate for the lower ON-resistance. Please see the table below.

Part Reference	250V Output	300V Output
M_1	BSZ42DN25NS3G 250V, 425m Ω , 5A	AON7460 300V, 830m Ω , 4A

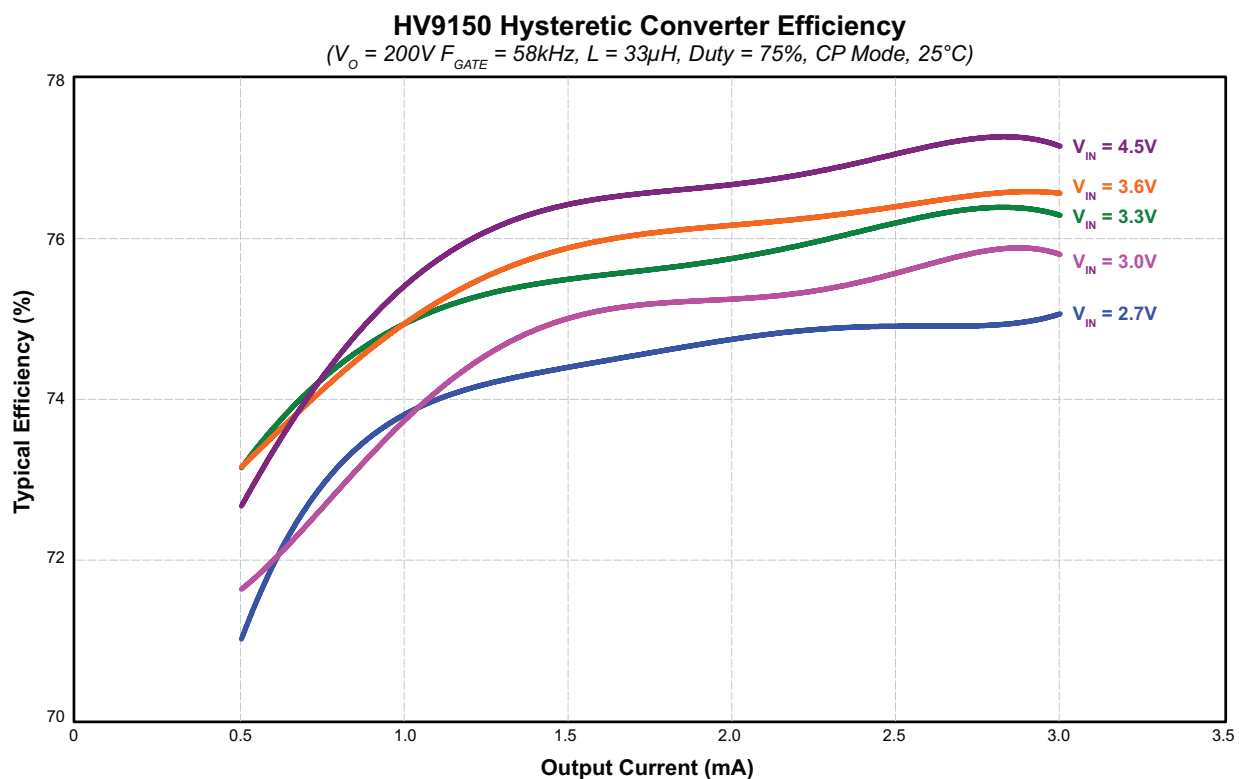
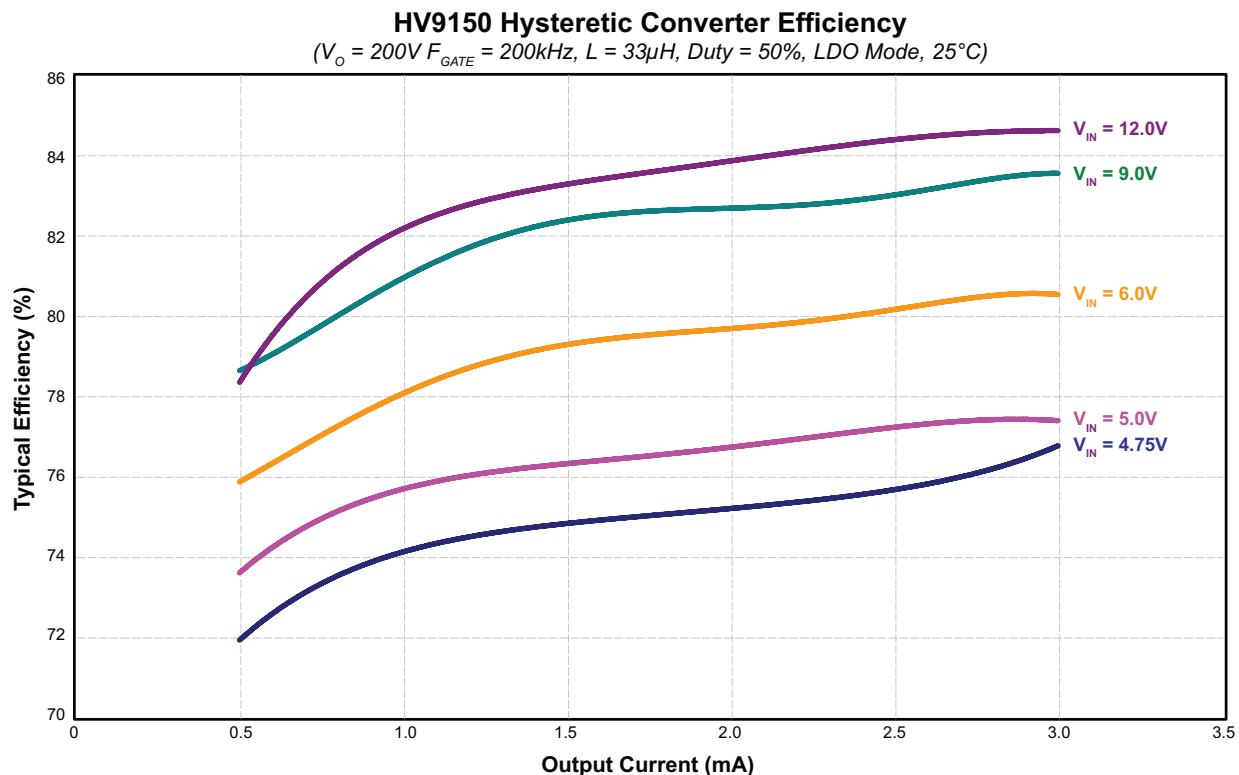
HV9150DB1 - Typical Performance

HV9150 Hysteretic Converter Efficiency

($V_o = 200V$ and $I_o = 3mA$, $L = 33\mu H$, Duty = 75%, 25°C)



HV9150DB1 - Typical Performance



Bill of Materials

Reference	Description	Voltage	Package	Manufacturer
C_{VDD1} , C_{CP1} , C_{CP2}	0.22 μ F, 25V ceramic capacitor	16V	0805	Any
C_{CT}	1 μ F, 16V, ceramic capacitor	16V	0805	Any
C_{FB}	Not installed	50V	0805	Any
C_{HV1}	1.0 μ F, 500V, ceramic capacitor	500V	2220	Any
C_{IN1}	22 μ F, 16V, ceramic capacitor	16V	1206	Any
C_{VLL1}	1 μ F, 16V, ceramic capacitor	16V	0805	Any
D_1	BAV99S diodes 100V	-	SOT-363	Any
D_2	DZ2705100L 5.1V Zener diode	-	SSSMINI2	Any
D_3	DZ2S03300L 3.3V Zener diode	-	SSSMINI2	Any
L_1	33 μ H	-	-	Any
M_1	BSZ42DN25NS3G 250V MOSFET	-	8-Lead (3x3) DFN	Infineon
R_{FREQ}	125k Ω	-	0805	Any
R_3 , R_{REF}	0 Ω jumper	-	0805	Any
R_1	31.6k Ω	-	0805	Any
R_{1_TRIM}	200k Ω trimmer potentiometer	-	3386F	Any
R_2	7.5M Ω high voltage chip resistor	300V	1206	Any
R_4 , R_9	Not installed	-	0805	Any
R_5	43k Ω	-	0805	Any
R_6 , R_7 , R_8	100k Ω	-	0805	Any
R_{10}	1k Ω	-	0805	Any
TP_1 , TP_2 , TP_3 , TP_4 , TP_5	Power supply input/output terminals	-	-	Any
U_1	HV9150K6-G	-	16-Lead (3x3) QFN	Supertex

Supertex inc. does not recommend the use of its products in life support applications, and will not knowingly sell them for use in such applications unless it receives an adequate "product liability indemnification insurance agreement." **Supertex inc.** does not assume responsibility for use of devices described, and limits its liability to the replacement of the devices determined defective due to workmanship. No responsibility is assumed for possible omissions and inaccuracies. Circuitry and specifications are subject to change without notice. For the latest product specifications refer to the **Supertex inc.** (website: <http://www.supertex.com>)