

**Ordering number C12528_PETUNIA**

| | | | |
|-----------------|--------------|-------------|------------|
| Family | Petunia | FWHM | 29 degrees |
| Type | Lens | Efficiency | 91 % |
| LED | XP-E | cd/Im | 2.200 |
| Color | Clear | Gerber File | Available |
| Diameter | 29.5+46.5 mm | | |
| Height | 7.4 mm | | |
| Style | Rectangular | | |
| Optic Material | PMMA | | |
| Holder Material | - | | |
| Fastening | Pin | | |
| Status | Ready | | |

NOTE: The typical divergence will be changed by different color, chip size and chip position tolerance. The typical total divergence is the full angle measured where the luminous intensity is half of the peak value.



PRODUCT DATASHEET

Petunia series

last update 28/5/2012

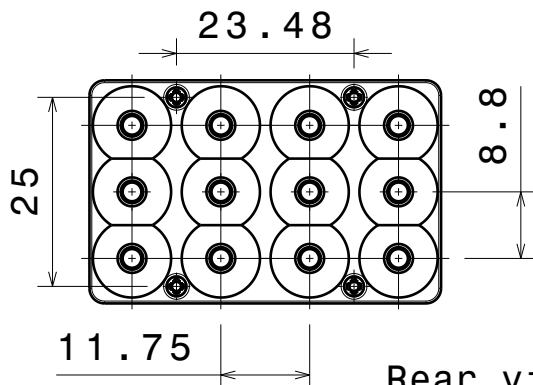
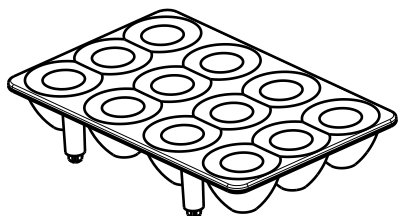
GENERAL INFORMATION

- Product series especially designed & optimized for XP-E series of LEDs.
- Special care taken to make light distribution as uniform as possible.
- Lens material optical grade PMMA with high UV and temperature resistance (105 degrees of Celcius / 220 degrees of Fahrenheit). Allows use of high current and temperature conditions.

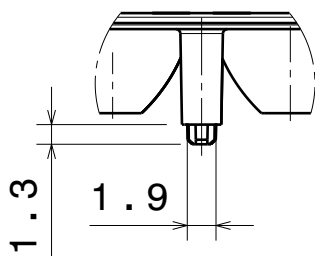
Please find more information about used material from below:

http://ledil.fi/sites/default/files/Documents/Technical/Material/PMMA%20N%20UL94_Yellow%20Card.pdf

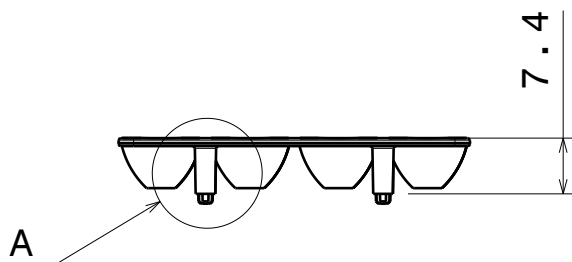
<http://ledil.fi/sites/default/files/Documents/Technical/Material/PMMA%20N%20PLEXIGLAS-Datasheet.pdf>



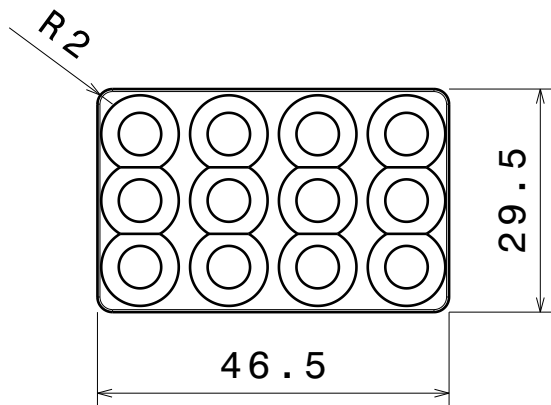
Rear view
Scale: 1:1



Detail A
Scale: 2:1



Bottom view
Scale: 1:1



Front view
Scale: 1:1

Material: PMMA

Tolerances if not otherwise shown:
According to DIN ISO 2768-1
Linear measures:
Up to 30mm class F, otherwise class M.

According to DIN ISO 2768-2
Form and position:
class K

This drawing is our property.
It can't be reproduced
or communicated without
our written agreement.



Ledil Oy
Salorankatu 10
FIN 24240 SALO
Finland

DRAWING TITLE

Datasheet Petunia-OSL Lens

DRAWN BY
pl

DATE
27.01.2012

CHECKED BY
xx

DATE
xx.xx.2011

DESIGNED BY
pl

DATE
13.12.2011

SIZE
A4

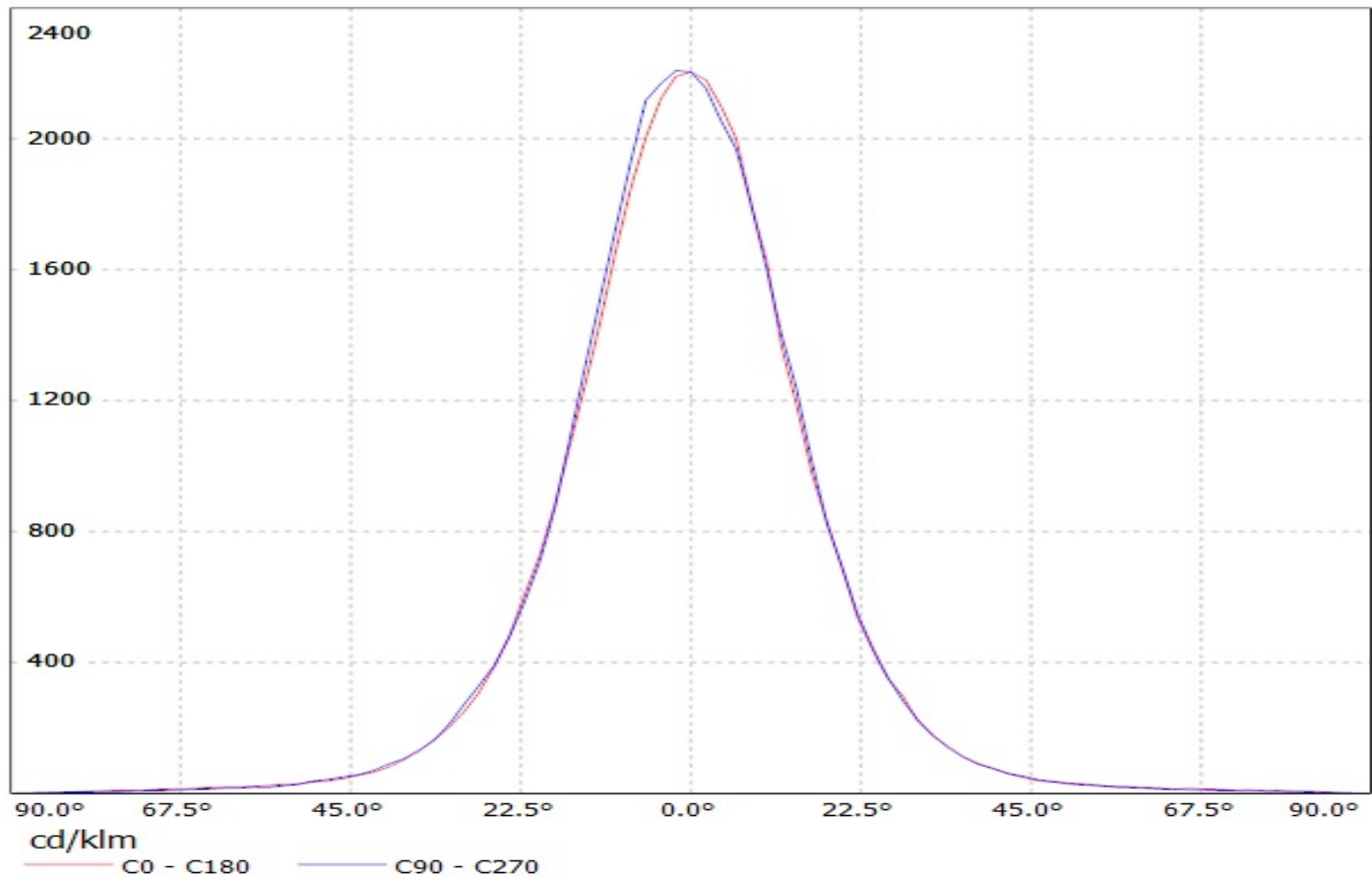
DRAWING NUMBER
C12528

REV
1

SCALE 1:1 WEIGHT (g)

SHEET 1/1

Luminaire: Ledil Oy C12528_Petunia (Cree XP-E 862lm @ 250mA) Efficiency=91%
Lamps: 1 x Cree XP-E 862lm @ 250mA



Luminaire: Ledil Oy C12528_Petunia (Cree XP-E 862lm @ 250mA) Efficiency=91%
Lamps: 1 x Cree XP-E 862lm @ 250mA

