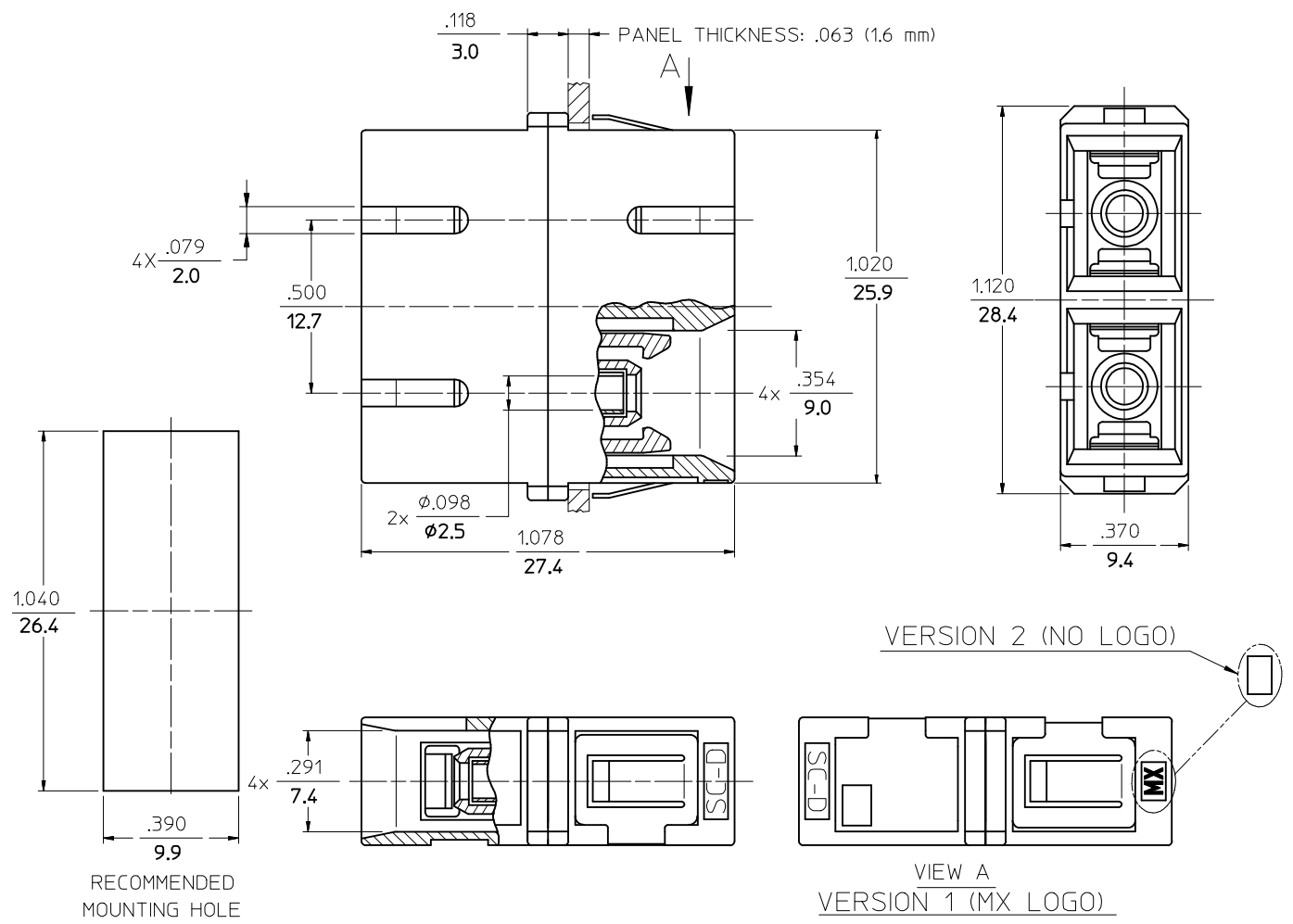


10	9	8	7	6	5	4	3	2	1	
P/N OF ADAPTER	MATERIAL OF SLEEVE	TYPE	COLOR	LOGO						
106166-0100	Zr	SINGLE MODE	BLUE	MX						
106166-0103	Zr									
106166-0120	Zr									
106167-0100	PHOSPHOR BRONZE	MULTIMODE	BEIGE							
*106167-0185			AQUA							
106166-0110	Zr	MULTIMODE	BLACK							
106167-0110	PHOSPHOR BRONZE									
106167-0180	Zr									
106166-0130	Zr	SINGLE MODE	RED							
106167-0130	PHOSPHOR BRONZE									
106166-0140	Zr	APC	GREEN							
106167-0140	PHOSPHOR BRONZE									
106166-0150	Zr	SINGLE MODE	BLUE							
106166-0152										
*106166-0191	PHOSPHOR BRONZE	SINGLE MODE	BLUE	NONE						
106167-0150										
*106166-0185	Zr	MULTIMODE	AQUA							
*106166-0190	Zr			BEIGE	NONE					
*106167-9110	PHOSPHOR BRONZE	MULTIMODE								
*106167-0190										
*106167-0200										



NOTES:
 1. P/NS STARTING WITH THE (*) ARE BULK PACKED IN QUANTITIES OF 100pcs.
 2. DUST CAPS ARE NOT SHOWN BUT INCLUDED.

ENTER DESCRIPTION EC NO: MF2010-0028 DR: WANKPEVNER CHKD: 2009/07/23 APPR: LGUMIN 2009/07/23	QUALITY SYMBOLS	GENERAL TOLERANCES (UNLESS SPECIFIED)	DIMENSION STYLE	SCALE	DESIGN UNITS	THIRD ANGLE PROJECTION
	▽=0 ∇=0	mm INCH 4 PLACES ± --- ± --- 3 PLACES ± --- ± --- 2 PLACES ± --- ± --- 1 PLACE ± --- ± --- ANGULAR ±1/2°	IN/MM	1:1	INCH	
		DRAFT WHERE APPLICABLE MUST REMAIN WITHIN DIMENSIONS	DRAWN BY DATE PGIBLIN 2005/10/07	TITLE DUPLX ADAPTER (SC-D, FLANGELESS)		
			CHECKED BY DATE	MATERIAL NO. SEE TABLE		
			APPROVED BY DATE	DOCUMENT NO. SD-10616Y-01Y0		
				Molex MOLEX INCORPORATED		
				SHEET NO. 1 OF 1		
				THIS DRAWING CONTAINS INFORMATION THAT IS PROPRIETARY TO MOLEX INCORPORATED AND SHOULD NOT BE USED WITHOUT WRITTEN PERMISSION		