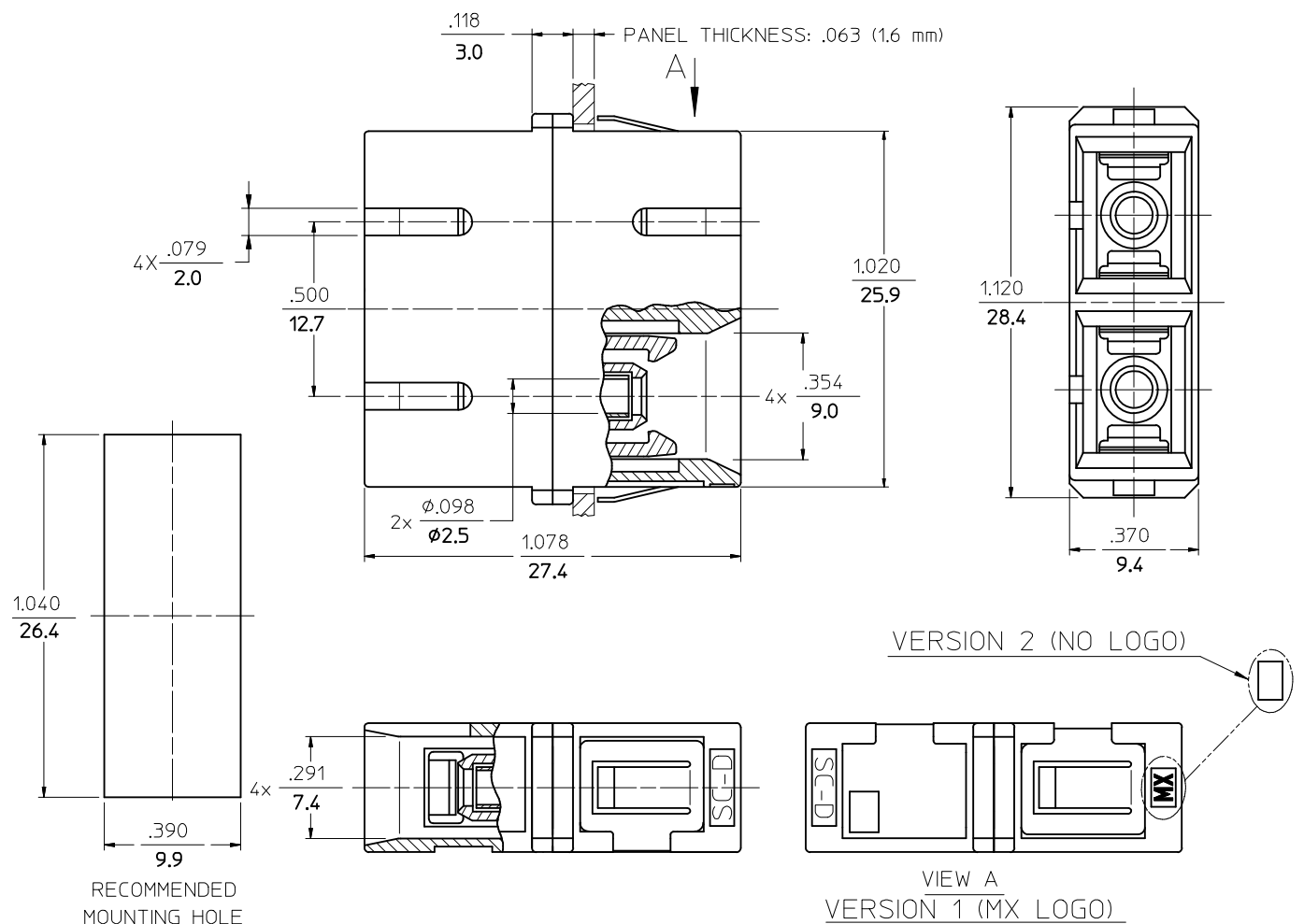


10	9	8	7	6	5	4	3	2	1
P/N OF ADAPTER	MATERIAL OF SLEEVE	TYPE	COLOR	LOGO					
106166-0100	Zr	SINGLE MODE	BLUE	MX					
106166-0103	Zr								
106166-0120	Zr								
106167-0100	PHOSPHOR BRONZE	MULTIMODE	BEIGE						
*106167-0185			AQUA						
106167-0180	Zr	BLACK							
106167-0130	PHOSPHOR BRONZE	SINGLE MODE	RED						
106166-0140	Zr	APC	GREEN						
106167-0140	PHOSPHOR BRONZE								
106166-0150	Zr	SINGLE MODE	BLUE		NONE				
106166-0152				AQUA					
*106166-0191	PHOSPHOR BRONZE	MULTIMODE	BEIGE	MX					
106167-0150			NONE						
*106166-0185	Zr	SINGLE MODE	BLUE	NONE					
*106166-0190	Zr	SINGLE MODE	BLUE	NONE					
*106167-9110	PHOSPHOR BRONZE	MULTIMODE	AQUA	MX					
*106167-0190			BEIGE	NONE					
*106167-0200			NONE						



NOTES:

- P/Ns starting with the (*) are bulk packed in quantities of 100pcs.
- Dust caps are not shown but included.

ENTER DESCRIPTION EC NO: MF2010-0028 DR: DRWANKPEVZNER CHKD: 2009/07/23 APPR: LGUMIN 2009/07/27	QUALITY SYMBOLS	GENERAL TOLERANCES (UNLESS SPECIFIED)	DIMENSION STYLE	SCALE	DESIGN UNITS	THIRD ANGLE PROJECTION
	▽=0 ∇=0	mm INCH 4 PLACES ± --- ± --- 3 PLACES ± --- ± --- 2 PLACES ± --- ± --- 1 PLACE ± --- ± --- ANGULAR ±1/2°	IN/MM	1:1	INCH	
	DRAFT WHERE APPLICABLE MUST REMAIN WITHIN DIMENSIONS	DRAWN BY: PGIBLIN DATE: 2005/10/07 CHECKED BY: _____ DATE: _____ APPROVED BY: _____ DATE: _____	TITLE	DUPLEX ADAPTER (SC-D, FLANGELESS)		
		MATERIAL NO. SEE TABLE SIZE B	DOCUMENT NO. SD-10616Y-01Y0 SHEET NO. 1 OF 1	MOLEX INCORPORATED		

THIS DRAWING CONTAINS INFORMATION THAT IS PROPRIETARY TO MOLEX INCORPORATED AND SHOULD NOT BE USED WITHOUT WRITTEN PERMISSION