

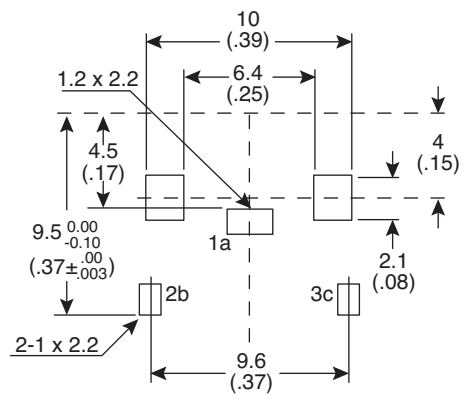
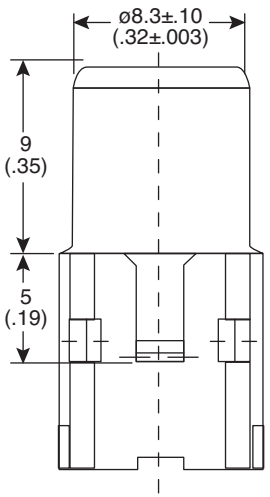
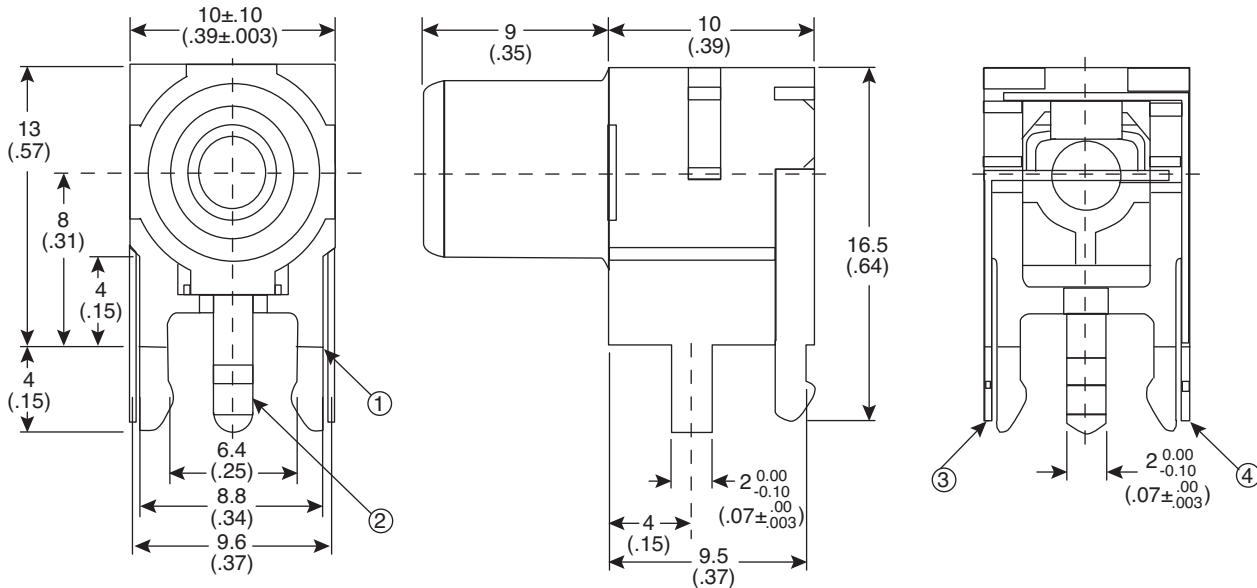
RCA Jack

161-0396-E

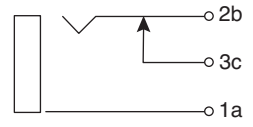


RCA Jack

161-0396-E



Bottom View



Dimensions: mm (in.)

MECHANICAL SPECIFICATIONS	
Insulator:	Ni pLated 3~4 μ

MATERIAL SPECIFICATIONS		
1	Housing:	PBT+15% Glass
2	Earth Terminal:	C2680R-H t=0.4
3	Break Terminal:	C2680R-H t=0.4
4	Spring Terminal:	C5210R-H t=0.4
RoHS Compliant		

Date Last Revised: 5/12/09

Available from Mouser Electronics
 1-800-346-6873
 www.mouser.com

KC-301051

Specifications are subject to change without notice. No liability or warranty implied by this information. Environmental compliance based on producer documentation.