

4

3

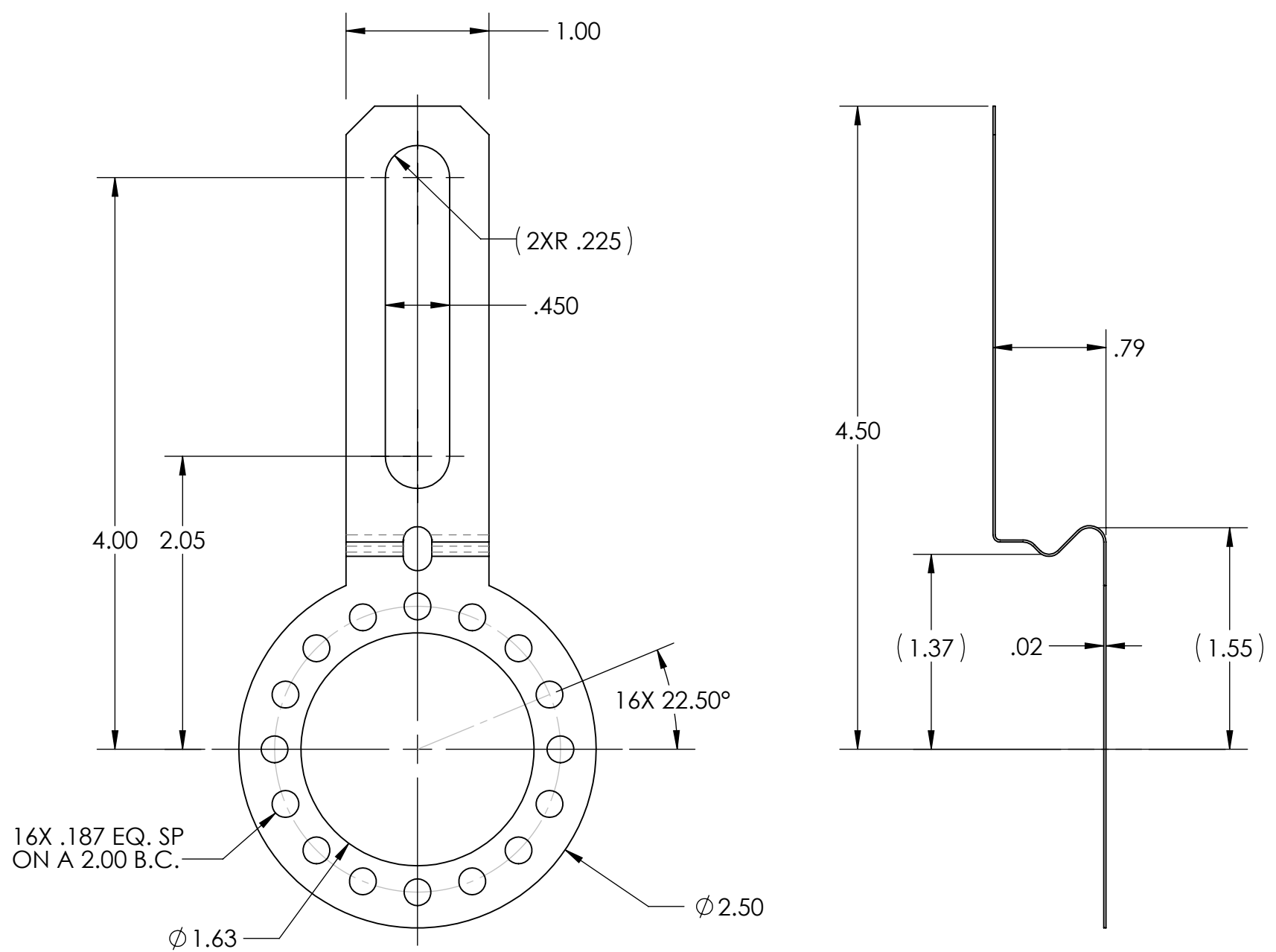
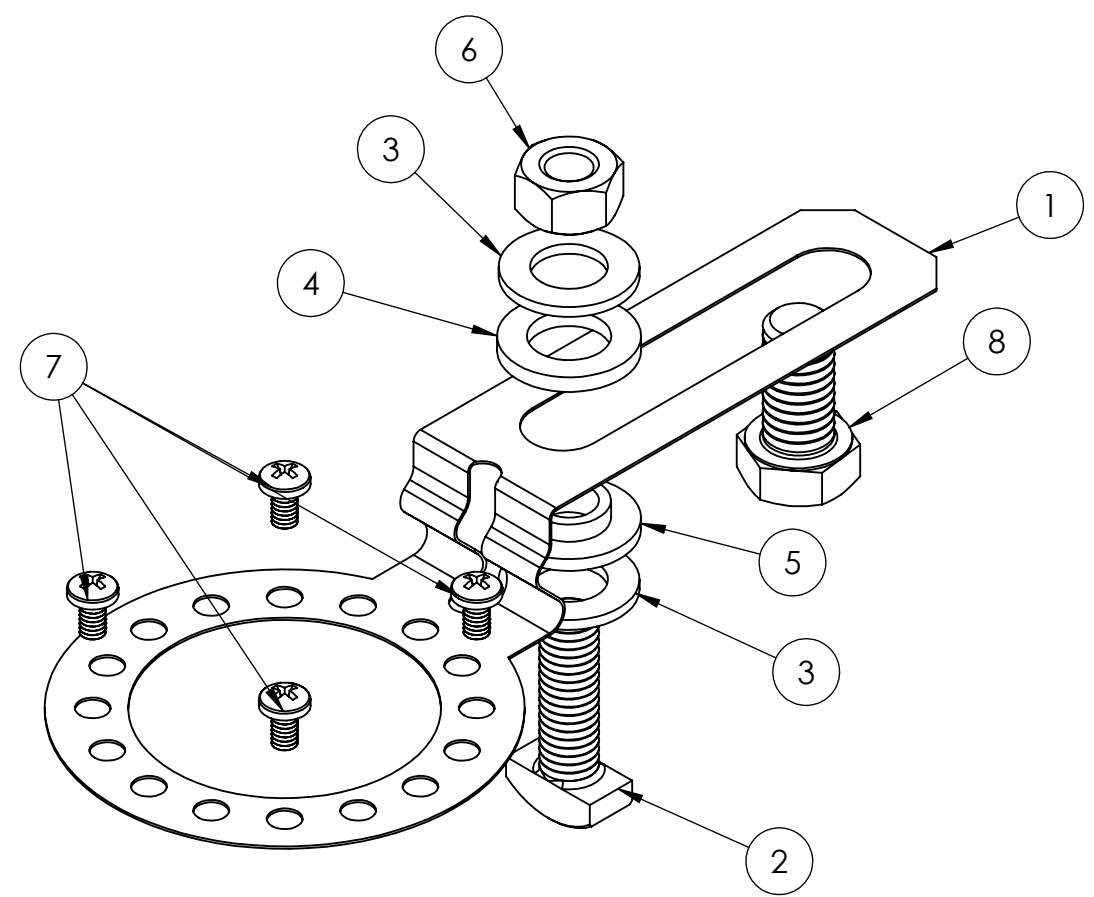
2

1

ITEM NO.	PART NO.	DESCRIPTION	QTY
1	38360-003	TETHER ARM	1
2	33029-002	T-BOLT, ZINC PLATE	1
3	MS15795-813	5/16 FLAT WASHER	2
4	25031-001	NYLON FLAT WASHER	1
5	25030-006	NYLON SHOULDER-WASHER	1
6	MS35690-510	5/16-18UNC HEX NUT	1
7	330PP-6321/4L	6-32X1/4 PAN-HEAD SCREW	4
8	330HHCS5/1611/4	5/16 HEX HEAD CAP SCREW	1

ZONE	REV.	REVISION DESCRIPTION	ECN NO.	DATE

P/N 31215-002



ORDER P/N 31215-002  
 NOTE: THE TETHER ARM, NYLON WASHERS, FLAT WASHERS AND THREE #6-32 SCREWS WILL BE USED IN ALL INSTALLATIONS. EITHER THE T-BOLT OR THE HEX HEAD BOLT WILL BE USED WITH OR WITHOUT THE HEX NUT DEPENDING UPON THE INSTALLATION REQUIREMENTS.

<b>UNCONTROLLED COPY</b>			
FIRST ISSUE DATE: 04/19/19 DRAWN: DRC APPROVED: MFB DATE: 04/19/19	SENSATA TECHNOLOGIES PROPRIETARY AND CONFIDENTIAL. NEITHER THIS PRINT NOR THE INFORMATION CONTAINED HEREON IS TO BE USED AGAINST THE INTERESTS OF SENSATA TECHNOLOGIES OR AGAINST THE INTERESTS OF ANY OF ITS AFFILIATED COMPANIES OR WHOLLY OWNED SUBSIDIARIES.	BEI SENSORS 1461 LAWRENCE DRIVE THOUSAND OAKS, CA 93120	
ECN: DATE:	INTERPRET DIMENSIONING AND TOLERANCING PER ASME Y14.5-2009. UNLESS OTHERWISE SPECIFIED DIMENSIONS ARE IN INCHES [MILLIMETERS] AND ARE INTENDED AS NOMINAL SEE PRODUCT SPECIFICATIONS FOR MORE DETAILS.	<b>TITLE</b> <b>HS25 R2 TETHER ARM KIT</b>	
MATERIAL: CRES STEEL; NYLON (INSULATOR WASHERS); HALF HARD 300 SERIES STAINLESS STEEL (TETHER ARM)	DO NOT SCALE DRAWING	THIRD ANGLE PROJECTION	SCALE: 1:1
		DWG NO.: <b>09917-001</b>	REV.: .
		SOLIDWORKS	SHEET 1 OF 1

4

3

2

1

DEVICE:

PROJECT: