

iMCU7100EVB User's Guide

Version 1.0



© 2011 WIZnet Co., Inc. All Rights Reserved.

For more information, visit our website at <http://www.wiznet.co.kr>

Table of Contents

1	Overview	3
1.1	Introduction	3
1.2	Specification	4
2	Getting Started	5
2.1	Power On	5
2.2	Ping Test	5
2.3	Programming	6
2.4	TCP Server Demonstration.....	6
3	Product Description	10
3.1	Package and Contents	10
3.2	Board Layout	11
3.3	Hardware Description	12
3.4	Physical Specification	16

1 Overview

iMCU7100EVB is an Evaluation Board where the function and performance of W7100A can be tested. In this document, basic ping and TCP server test will be tested.

1.1 Introduction

iMCU7100EVB is an Evaluation Board made for testing whole functions of internet embedded MCU W7100A. iMCU7100EVB can easily build serial-to-Ethernet communication environment by using RS-232 port and LAN port; W7100A can also use supported Character LCD and other added ports to control and test the all functions of the W7100A chip.

The list of Application notes from WIZnet website is as followed.

- ✓ TCP server, client
- ✓ UDP
- ✓ DHCP
- ✓ DNS client
- ✓ DDNS
- ✓ HTTP server, client
- ✓ Telnet
- ✓ Serial to Ethernet server, client, UDP
- ✓ IPRAW
- ✓ MACRAW
- ✓ UART
- ✓ Timer
- ✓ LCD
- ✓ I²C

1.2 Specification

<Table 1.1> Lists of Items Contained in the EVB

Item	Details	Note
MCU	Internet Embedded MCU - W7100A	8051 compatible
Memory	64KBytes Data Memory (RAM) 64KBytes Code Memory (ROM) 2KBytes Boot code Memory 256Bytes Data Flash	Embedded in W7100A
Serial	On board RS-232C 1Port with DB9 Connector	
Ethernet	On board RJ-45 with Transformer	
LCD	16Character * 2Line Character LCD	
LED	General purpose LED 3Ea Network Status LED 8Ea	
Button	Reset Switch 1Ea	
Debugger	On board Debugger Socket	
Expansion Port	MCU port expansion <ul style="list-style-type: none"> - 32Pin (8pin * 4) 2.54mm Pitch Pin-Header Hole - 14Pin (7pin * 2) 2.54mm Pitch Pin-Header Hole - 32Pin (8pin * 4) 2.00mm Pitch Pin-Header Hole - 14Pin (7pin * 2) 2.00mm Pitch Pin-Header Hole Dummy Hole <ul style="list-style-type: none"> - 167Pin 2.54mm Pitch Dummy Hole - 236Pin 2.00mm Pitch Dummy Hole 	
Power	DC 5V / 2A Adapter	Built-in

2 Getting Started

2.1 Power On

Connect Character LCD, UTP cable, **RSR232**, and the power cable to the iMCU7100EVB.



<Fig. 2.1> iMCU7100EVB

Power on the iMCU7100EVB board, and check the following.

1. Check whether POWER LED(D13) is ON.
2. Check whether “iMCU7100 EVB” and “192.168.001.002” appears on the Character LCD.

If the above two are checked iMCU7100EVB board is normally working.

2.2 Ping Test

Run the command prompt at the test PC, and execute the ping command to the IP of the test PC. Send the ICMP ping request and check the ICMP ping reply from the PC. Note: the test PC and the iMCU7100EVB board must be placed on the same sub-network.

1. Confirm the network information of Test PC as the following
 - Source IP Address : 192.168.1.xxx
 - Gateway IP Address : 192.168.1.1
 - Subnet Mask : 255.255.255.0
2. Execute ping command as the following
 - “C:\> ping 192.168.1.2”

```

C:\W>ping 192.168.1.2

Pinging 192.168.1.2 with 32 bytes of data:

Reply from 192.168.1.2: bytes=32 time<1ms TTL=128
Reply from 192.168.1.2: bytes=32 time<1ms TTL=128
Reply from 192.168.1.2: bytes=32 time<1ms TTL=128
Reply from 192.168.1.2: bytes=32 time<1ms TTL=128

Ping statistics for 192.168.1.2:
    Packets: Sent = 4, Received = 4, Lost = 0 (0% loss),
    Approximate round trip times in milli-seconds:
        Minimum = 0ms, Maximum = 0ms, Average = 0ms

C:\W>_

```

<Fig 2.2> Ping test

2.3 Programming

The iMCU7100EVB uses the WizISP program or W7100A debugger to program the compiled binary image(firmware). Please refer to the WizISP program guide and W7100A debugger guide for more detailed information.

2.4 TCP Server Demonstration

The document for TCP server application note and the sample code are included in the bundle CD. The application note can also be downloaded from the [WIZnet website](http://www.wiznet.co.kr). User can easily test the TCP loopback server demonstration by using the sample code.

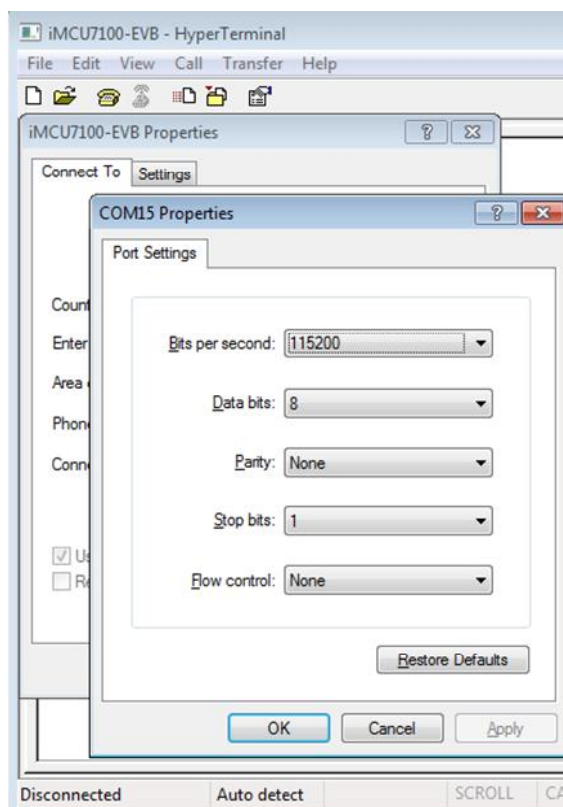
Lets test a simple TCP server demonstration as followed.

1. Confirm the testing environment.
 - Connect test PC to iMCUW7100EVB by using UTP cable directly.
 - Connect test PC to iMCUW7100EVB by using Serial cable directly.
 - Connect 5V power adaptor to test PC
2. Confirm the network information of test PC as follows
 - Source IP Address : 192.168.0.2
 - Gateway IP Address : 192.168.0.1
 - Subnet Mask : 255.255.255.0
3. After executing serial terminal program (ex: HyperTerminal), set up the properties as followed.

<Table 2.1> Setting of Terminal program

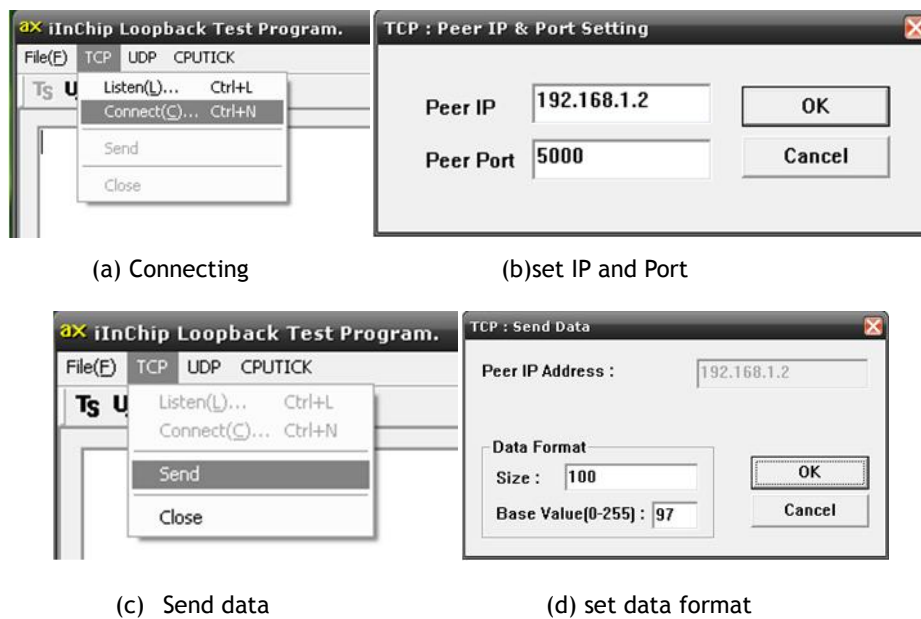
Properties	Setting Value
Bits Per second (Baud Rate)	115200 bps
Data Bits	8 Bits
Stop Bits	1 Bits
Parity	No
Flow Control	None

The serial message that indicates the operation of the TCP server is shown on the HyperTerminal. In order to check serial messages, the settings for HyperTerminal connection information must be done as shown in Figure 2.3. Check the COM port since it differs depending on the user's settings.



<Fig 2.3> Setting of HyperTerminal program

4. Turn on the iMCU7100EVB and check the power LED.
5. Run AX1 as in the order below. (Please refer to AX1 user's manual for more details)
Execute AX1 as shown in Fig 2.4

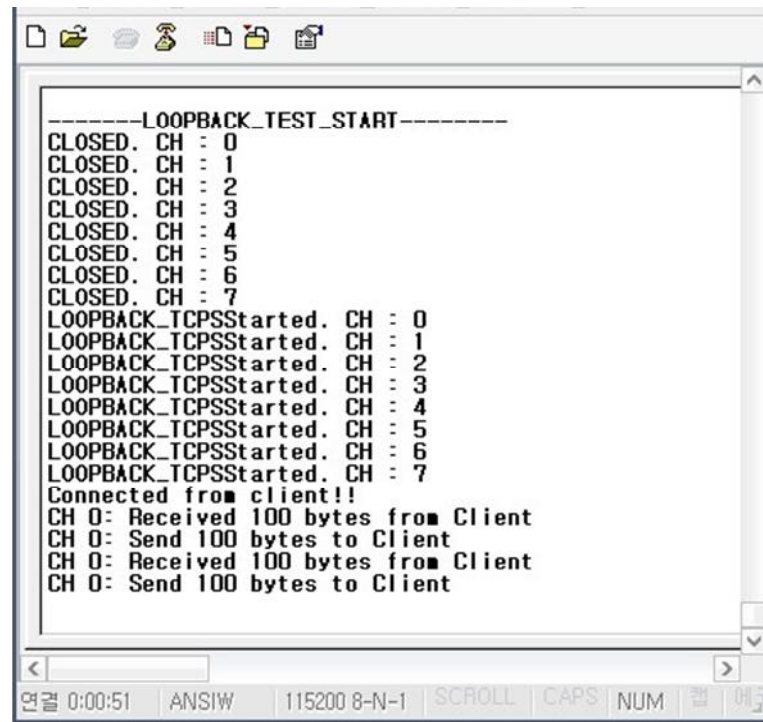


<Fig 2.4> Execute AX1

Since iMCU7100EVB is operating in TCP server mode, select 'TCP Connect' from AX1 program and connect to the board. Enter the IP address and Port number of the iMCU7100EVB; the 'connected' message will show and connect to TCP server. If 'send' button is clicked, the loopback test will start. The data size and base value for the loopback test can be set by user.

6. Loopback server Result

(a) Loopback server Result (HyperTerminal)



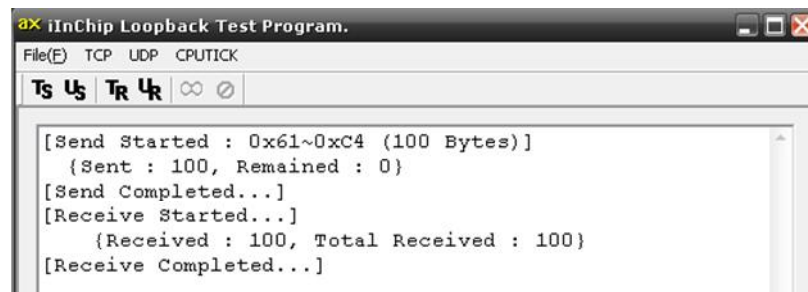
```

-----LOOPBACK_TEST_START-----
CLOSED. CH : 0
CLOSED. CH : 1
CLOSED. CH : 2
CLOSED. CH : 3
CLOSED. CH : 4
CLOSED. CH : 5
CLOSED. CH : 6
CLOSED. CH : 7
LOOPBACK_TCPStarted. CH : 0
LOOPBACK_TCPStarted. CH : 1
LOOPBACK_TCPStarted. CH : 2
LOOPBACK_TCPStarted. CH : 3
LOOPBACK_TCPStarted. CH : 4
LOOPBACK_TCPStarted. CH : 5
LOOPBACK_TCPStarted. CH : 6
LOOPBACK_TCPStarted. CH : 7
Connected from client!!
CH 0: Received 100 bytes from Client
CH 0: Send 100 bytes to Client
CH 0: Received 100 bytes from Client
CH 0: Send 100 bytes to Client

```

<FIG 2.5>Result of LOOPBACK server Demonstration on HyperTerminal

(b) Loopback server Result(AX1)



```

aX iInChip Loopback Test Program.
File(F) TCP UDP CPUTICK
Ts Us Tr Ur ∞ 0
[Send Started : 0x61~0xC4 (100 Bytes)]
{Sent : 100, Remained : 0}
[Send Completed...]
[Receive Started...]
{Received : 100, Total Received : 100}
[Receive Completed...]

```

<Fig 2.6> Result of LOOPBACK server Demonstration on AX1

If the loopback test successfully starts, the message that was sent from AX1 to iMCU7100EVB will be sent back to AX1. Continuous loopback test can be operated if user wishes to.

3 Product Description

3.1 Package and Contents

<Table> 3.1 List of items contained in the iMCU7100EVB

	Item	Quantity
Board	iMCU7100EVB Board	1
	16 x 2 Character LCD	1
Accessory	Power adapter (DC 5V / 2A)	1
	UTP Cable	1
	Serial Cable	1

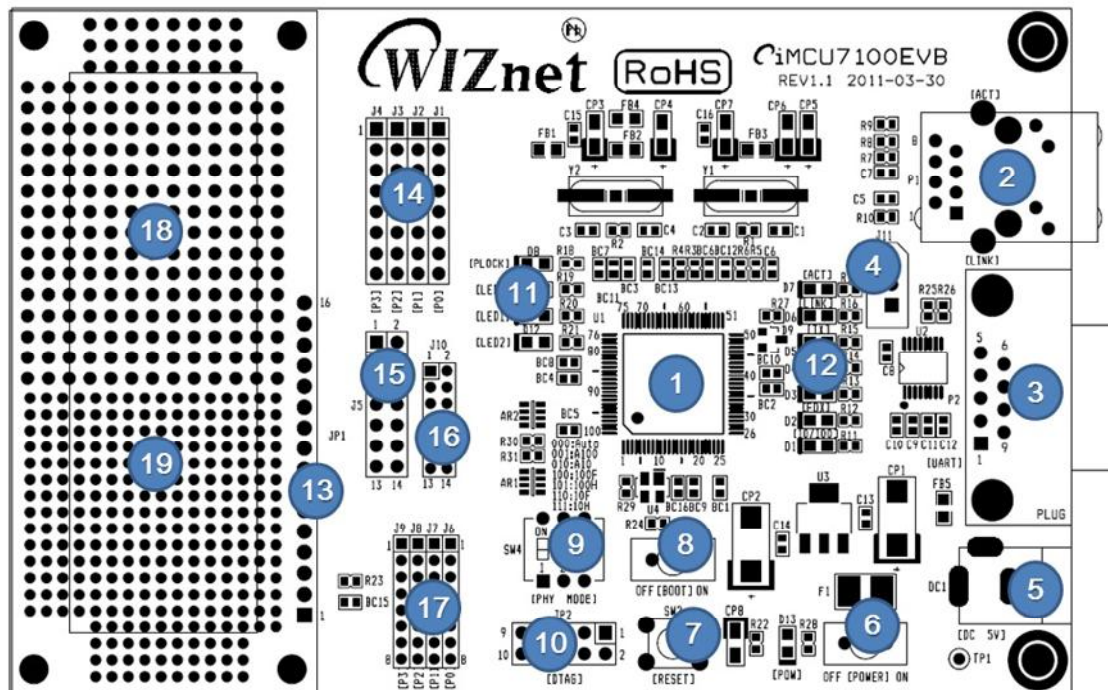
- Sample codes and documents are available on [WIZnet website](#).
The H/W version of iMCU7100EVB board can change for performance/function improvement.
- The fine parts of the component might differ depending on the manufacturer.

<Table> 3.2 Web Contents

Directory			Contents
iMCU7100EVB	Documents	Manual	User's Manual
		Datasheet	Datasheet of Main Parts
		App Note	Application Notes
	Hardware	Schematics	iMCU7100EVB Hardware Schematic
		Parts List	iMCU7100EVB Parts List
	Software	Firmware	iMCU7100EVB Firmware
		Tools	AX1, WizISP

- The content of software might differ depending on the version.
Download the latest version of firmware, software, and documents at [WIZnet website](#).

3.2 Board Layout



<Fig 3.1> Layout of iMCU7100EVB

- The description of each Part is shown in the Table 3.3 as below.

<Table 3.3> Parts Description of iMCU7100EVB

No	Description	No	Description
1	WIZnet iMCU7100A	2	RJ-45 Jack (integrated transformer)
3	RS-232C DB9 Connector	4	RS-232C 3Pin Header Hole (TTL)
5	DC 5V / 2A Adapter Jack	6	Power Switch
7	Reset Switch	8	Enable Boot Switch
9	PHY mode selection Switch	10	W7100A Debugger Connector
11	User LED * 3	12	Network Status Indicate LED * 8
13	Character LCD Connector	14	MCU Port Expansion Pin Header Hole 32Pin (8pin * 4) 2.54mm Pitch
15	MCU Port Expansion Pin Header Hole 14Pin (7pin * 2) 2.54mm Pitch	16	MCU Port Expansion Pin Header Hole 14Pin (7pin * 2) 2.00mm Pitch
17	MCU Port Expansion Pin Header Hole 32Pin (8pin * 4) 2.00mm Pitch	18	Dummy Pin Header Hole 236Pin 2.00mm Pitch Dummy Hole
19	Dummy Pin Header Hole 167Pin 2.54mm Pitch Dummy Hole		

3.3 Hardware Description

iMCUW7100A (U1)

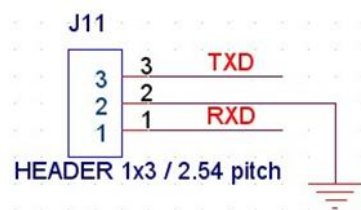
The W7100A is the one chip solution that includes a hardwired TCP/IP core and an 8-bit internet microcontroller unit (iMCU), which is 100% compatible to standard embedded 8051 compatible MCU core. Please refer to the W7100A datasheet for more detailed information.

Ethernet Port (P1)

Ethernet Port (P1) is the connector that connects the UTP cable; and the RJ-45 connector internally includes a transformer to connect iMCU7100EVB board to the network.

RS-232C Serial Port (P2, J11)

RS-232C Serial Port (P2, J11) is a serial interface supported by W7100A. RS-232C Serial Port is basically structured to use DSUB 9Pin Male type connector (P2). But the RS-232C Serial Port is also structured to independently connect three pins of TX/RX/GND which are TTL signals, with the Pin header; allowing the user to use user-produced cable. Fig 2.2 shows the structure.



<Fig 3.2> Simple RS-232C Serial Port

DC Power Input Connector (DC1)

DC Power Input Connector (DC1) is supported by 5V/2A Adaptor of iMCU7100EVB. DC Power Input Connector (DC1) is structured for a safe and stable environment by applying Poly_Fuse(F1); to prevent board damage from excessive electric current caused from misusing the adaptor.

Power Switch (SW1)

Power Switch (SW1) is a Toggle switch for turning on/off DC.

Reset Switch (SW2)

Reset Switch (SW2) is for manual reset to provide users the ability to reset whenever they want (ex: during the system is running).

Boot Enable Switch (SW3)

Boot Enable Switch (SW3) is used to select the W7100A booting mode and provides the

following modes.

<Table 3.4> Description of Boot Enable switch

SW3	Description
On	Boot Enable. To program by using the WIZISP
Off	Boot Disable. To run the application programmed by the WIZISP

PHY Mode Switch (SW4)

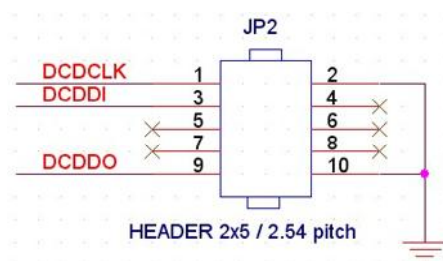
PHY Mode Switch(SW4) is for setting the mode of PHY block inside W7100A. PHY Mode Switch(SW4) provides the following modes.

<Table 3.5> Description of PHY Mode selection switch

SW4			Mode	Description
1	2	3		
OFF	OFF	OFF	Auto	Normal Operation Mode Auto-negotiation enable with all capabilities
OFF	OFF	ON	A100	Auto-negotiation with 100 BASE-TX FDX/HDX ability
OFF	ON	OFF	A10	Auto-negotiation with 10 BASE-T FDX/HDX ability
OFF	ON	ON	-	Reserved
ON	OFF	OFF	100F	Manual selection of 100 BASE-TX FDX
ON	OFF	ON	100H	Manual selection of 100 BASE-TX HDX
ON	ON	OFF	10F	Manual selection of 10 BASE-T FDX
ON	ON	ON	10H	Manual selection of 10 BASE-T HDX

W7100A Debugger Connector (JP2)

W7100A Debugger Connector (JP2) is for monitoring and changing various registers and internal memory inside W7100A. User can write applications in the Code memory, therefore allowing efficient debugging of software made by user.



<Figure 3.3> W7100A Debugger Connector

- Please refer to W7100A Debugger Guide for more details on W7100A Debugger.

General purpose LEDs

There are three User LEDs for the user to control/test the Port and Debugging.

<Table 3.6> Description of User debugging LED

LED Name	W7100A Pin Name	Direction
LED0	P0_3	O
LED1	P0_4	O
LED2	P0_5	O

Network Status Indicate LEDs

Table 3.7 lists the descriptions for Indicate LEDs that tell the network status.

<Table 3.7> Description of Status indicate LED

LED Name	W7100A Pin Name	DIR.	Description
10/100	SPDLED	O	Network speed indicate LED Low : 100Mbps , High : 10Mbps
FDX	FDXLED	O	Full / Half duplex indicate LED Low : Full duplex , High : Half duplex
COL	COLLED	O	Collision detect LED Low : Collisions occurred (only in half duplex mode)
RX	RXLED	O	Active Low. Receive activity LED
TX	TXLED	O	Active Low. Transmit activity LED
LINK	LINKLED	O	Active Low. Network link status indicate LED
ACT	ACTLED	O	Active Low. Rx or Tx activity LED
PLOCK	PLOCK	O	Active High. It notifies when internal PLL is locked.

Character LCD Connector (JP1)

Character LCD Connector (JP1) is for Debugging and showing the system status. Pin descriptions of the Character LCD Interface are as followed.

<Table 3.8> Character LCD Interface Pin Description

PIN#	iMCU7100EVB Board PIN NAME / Character LCD PIN NAME	DIR.	Description
1	GND / VSS		Signal Ground
2	5V / VDD	I	LCD Power Supply
3	V0 / V0	I	Voltage for LCD drive
4	P0_0 / RS	I	Data / Instruction register select
5	P0_1 / RW	I	Read / Write

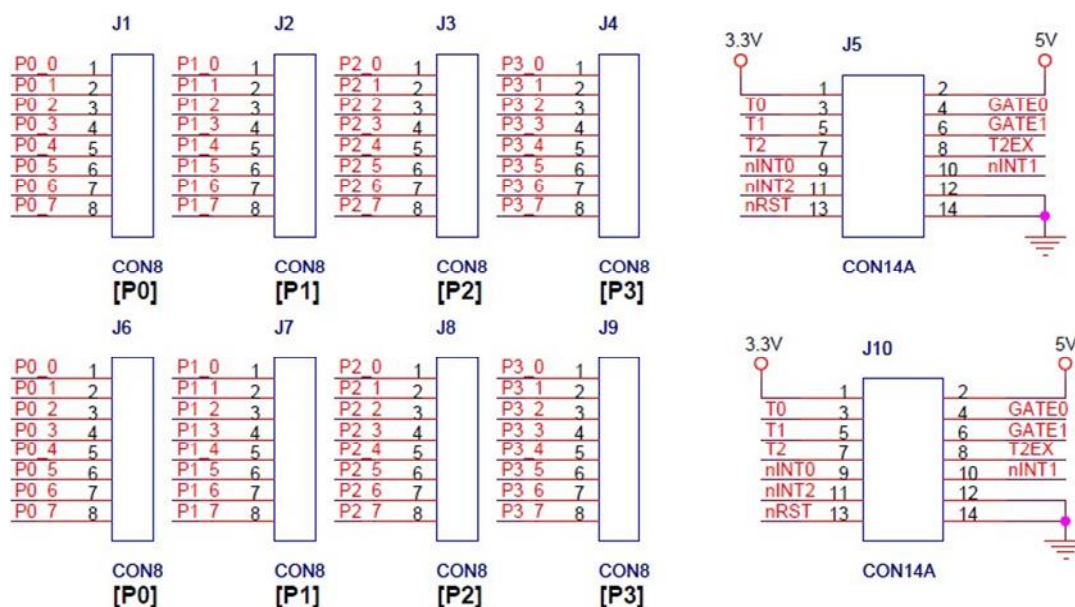
6	P0_2 / E	I	Enable signal,start data read / write
7 ~ 14	P2_0 ~ P2_7 / DB0~ DB7	I/O	Data Bus Line
15	Not Connect / LED A	O	LED Anode, power supply+
16	Not Connect / LED K	O	LED Cathode,ground 0V

- Please refer to LCD Datasheet (LC1624-R2.pdf) for more details on driving Character LCD.

MCU Port Expansion Pin header Hole (J1 ... J10)

W7100A provides two types of pitches from the total of 32pin (8bit x 4Port) IO pin. User can select according to their needs between 2.54mm Pin pitch and 2.00mm Pin pitch.

iMCU7100EVB board provides four ports of IO to allow users to use with the general pin header. The description of port expansion is as followed.

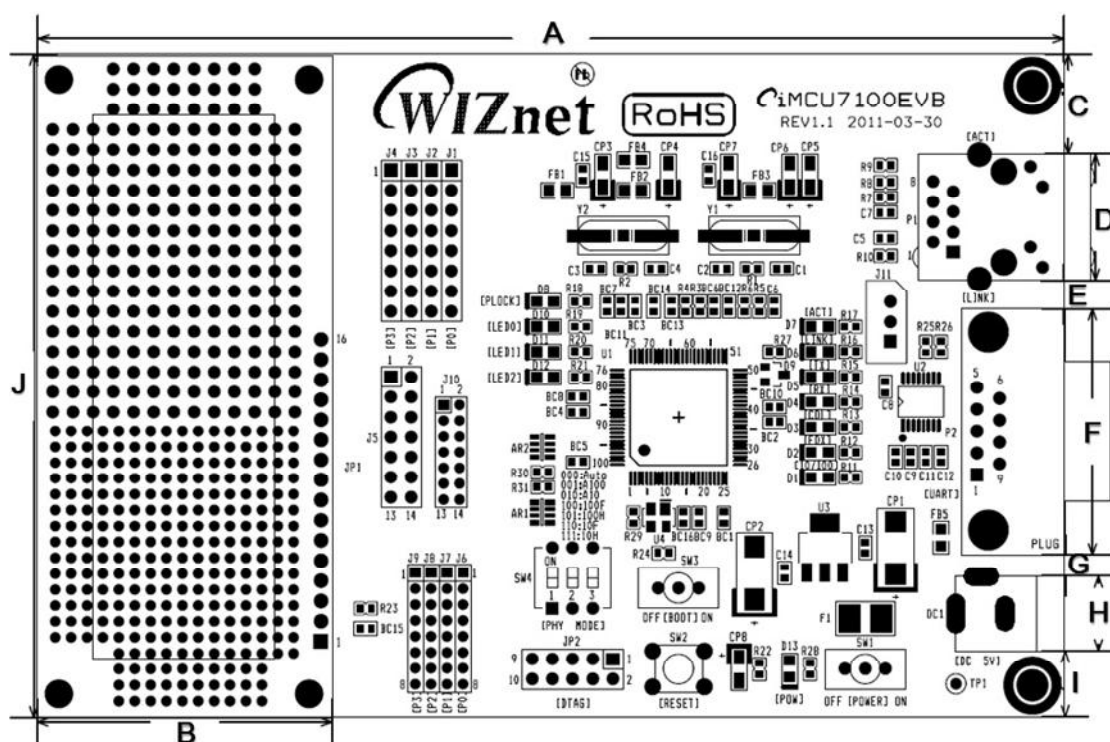


<Figure 3.4> Port Expansion Connector

Dummy Pin Header Hole

Dummy pin header holes are not connected with system circuits. The dummy pin header hole is provided into two types: 2.54mm Hole pitch and 2.00mm Hole pitch. By using dummy hole, users can test external devices that are in need of additional tests.

3.4 Physical Specification



<Figure 3.5> iMCU7100EVB Dimension

<Table 3.9> iMCU7100EVB Board Dimension

Symbols	Dimensions (mm)	Symbols	Dimensions (mm)
A	129.2	F	31.1
B	37.2	G	2.7
C	12.6	H	9.4
D	15.9	I	8.3
E	3.6	J	83.6

Document History Information

Revision	Date	Description
Ver. 0.9	Aug 17, 2009	Beta release
Ver. 1.0	May 12, 2011	Modified and added contents with iMCU7100EVB Rev. 1.1 launching

Copyright Notice

Copyright 2011 WIZnet, Inc. All Rights Reserved.

Technical Support: support@wiznet.co.kr

Sales & Distribution: sales@wiznet.co.kr

For more information, visit our website at <http://www.wiznet.co.kr>