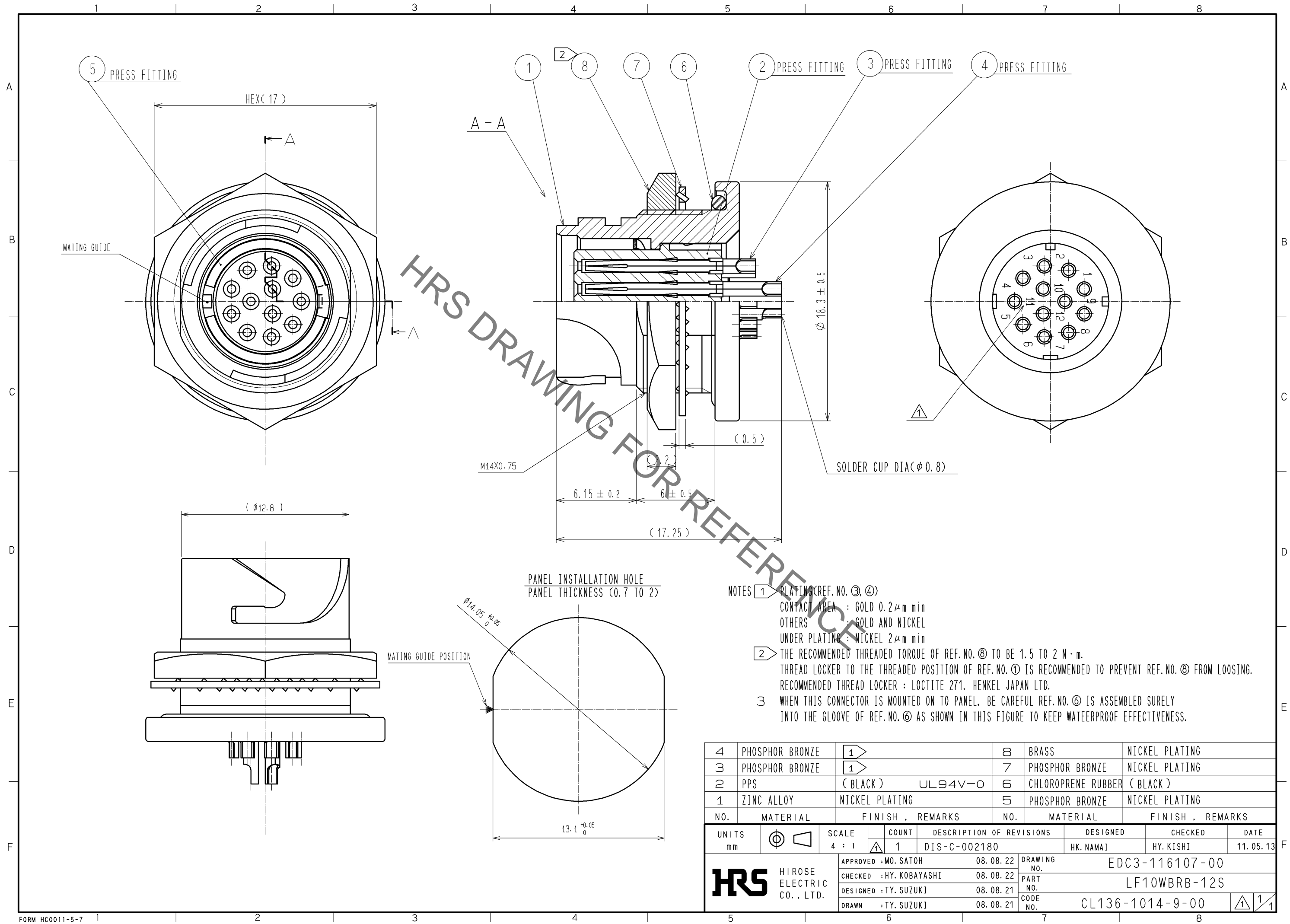


Jul.1.2019 Copyright 2019 HIROSE ELECTRIC CO., LTD. All Rights Reserved.
In case of consideration for using Automotive equipment / device which demand high reliability, kindly contact our sales window correspondents.



- NOTES ① PLATING (REF. NO. ③, ④)
CONTACT AREA : GOLD 0.2μm min
OTHERS : GOLD AND NICKEL
UNDER PLATING : NICKEL 2μm min
- ② THE RECOMMENDED THREADED TORQUE OF REF. NO. ⑧ TO BE 1.5 TO 2 N·m.
THREAD LOCKER TO THE THREADED POSITION OF REF. NO. ① IS RECOMMENDED TO PREVENT REF. NO. ⑧ FROM LOOSING.
RECOMMENDED THREAD LOCKER : LOCTITE 271, HENKEL JAPAN LTD.
- ③ WHEN THIS CONNECTOR IS MOUNTED ON TO PANEL, BE CAREFUL REF. NO. ⑥ IS ASSEMBLED SURELY
INTO THE GLOOVE OF REF. NO. ⑥ AS SHOWN IN THIS FIGURE TO KEEP WATERPROOF EFFECTIVENESS.

4	PHOSPHOR BRONZE		8	BRASS	NICKEL PLATING					
3	PHOSPHOR BRONZE		7	PHOSPHOR BRONZE	NICKEL PLATING					
2	PPS	(BLACK) UL94V-0	6	CHLOROPRENE RUBBER (BLACK)						
1	ZINC ALLOY	NICKEL PLATING	5	PHOSPHOR BRONZE	NICKEL PLATING					
NO.	MATERIAL	FINISH , REMARKS		NO.	MATERIAL	FINISH , REMARKS				
UNITS mm				SCALE 4 : 1		COUNT 1	DESCRIPTION OF REVISIONS DIS-C-002180	DESIGNED HK. NAMAI	CHECKED HY. KISHI	DATE 11.05.13
HIROSE ELECTRIC CO. , LTD.				APPROVED : MO. SATOH		08.08.22	DRAWING NO. EDC3-116107-00			
				CHECKED : HY. KOBAYASHI		08.08.22	PART NO. LF10WBRB-12S			
				DESIGNED : TY. SUZUKI		08.08.21	CODE NO.			
				DRAWN : TY. SUZUKI		08.08.21	CL136-1014-9-00			