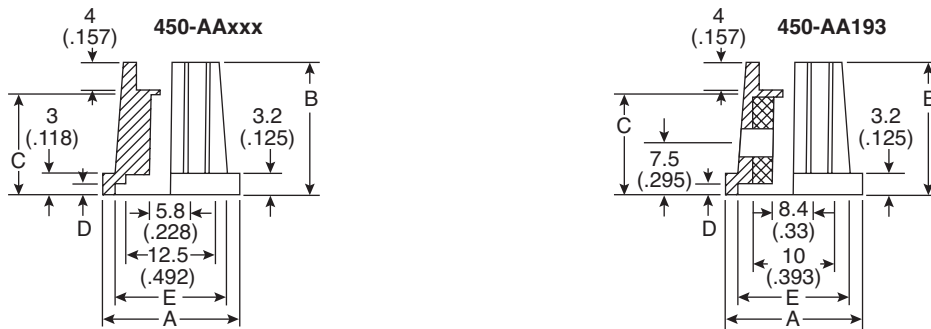


Date Last Revised: 6/19/13



DIMENSIONS: mm (in.)

| Part Number | A | B | C | D | E | Shaft | Colour |
|-------------|-------------|-----------|----------|------------|-------------|-------|--------|
| 450-AA150 | 15 (.59) | 19 (.748) | 12 (.47) | 2 (.079) | 13 (.572) | 6 | Black |
| 450-AA150C | 15 (.59) | 19 (.748) | 12 (.47) | 2 (.079) | 13 (.572) | 6 | Clear |
| 450-AA151 | 15 (.59) | 19 (.748) | 12 (.47) | 2 (.079) | 13 (.572) | 6 | Grey |
| 450-AA152 | 15 (.59) | 19 (.748) | 12 (.47) | 2 (.079) | 13 (.572) | T18 | Grey |
| 450-AA152C | 15 (.59) | 19 (.748) | 12 (.47) | 2 (.079) | 13 (.572) | T18 | Clear |
| 450-AA180 | 17.6 (.693) | 16 (.629) | 15 (.59) | 3.6 (.142) | 14.6 (.575) | 6.4 | Black |
| 450-AA181 | 17.6 (.693) | 16 (.629) | 15 (.59) | 3.6 (.142) | 14.6 (.575) | T18 | Black |
| 450-AA190 | 19.4 (.767) | 19 (.748) | 14 (.55) | 1.6 (.063) | 15.6 (.614) | 6.4 | Black |
| 450-AA191 | 19.4 (.767) | 19 (.748) | 14 (.55) | 1.6 (.063) | 15.6 (.614) | T18 | Grey |
| 450-AA192 | 19.4 (.767) | 19 (.748) | 14 (.55) | 1.6 (.063) | 15.6 (.614) | T18 | Black |
| 450-AA193 | 19.4 (.767) | 19 (.748) | 14 (.55) | 1.6 (.063) | 15.6 (.614) | 6.4 | Black |

SPECIFICATIONS

| | |
|------------------|------------------------------------|
| Material: | Plastic |
| Shaft | ø.236(ø6mm), ø.252(ø6.4mm) |
| Fits: | 6mm D-Shaft, T18, 6.4mm D-Shaft |

Available from Mouser Electronics
 1-800-346-6873 / www.mouser.com

EPD-200733