



PRODUCT DATASHEET

Lisa2 series

last update 21/11/2013

DETAILS

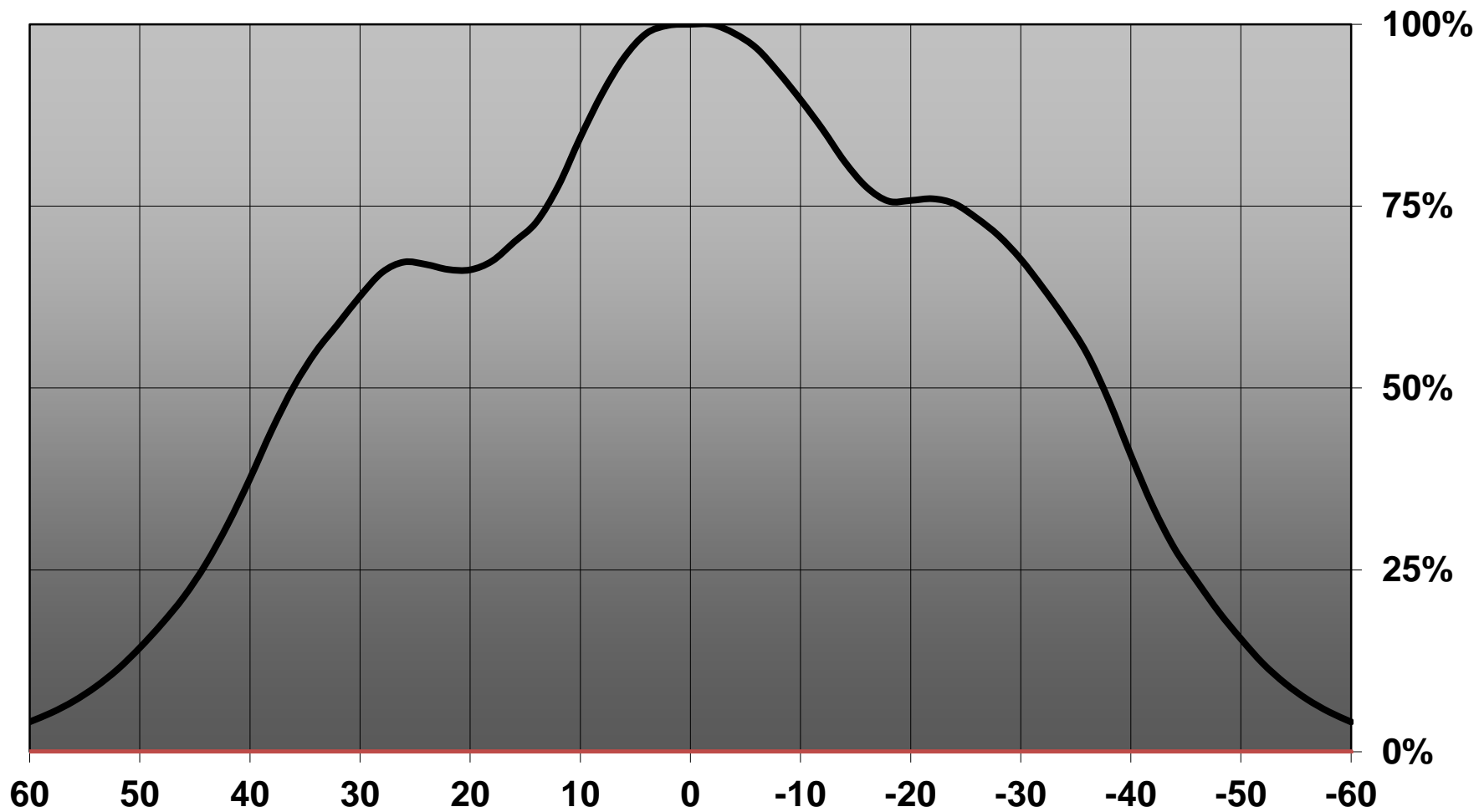
Product Number	FP11429_LISA2-WWW-PIN
Family	Lisa2
Type	Assembly
Color	black
Diameter	9,9 mm
Height	7 mm
Style	round
Optic Material	PMMA
Holder Material	PC
Fastening	pin, glue
Status	ready
ROHS Compliant	Yes
Date Updated	21/11/2013



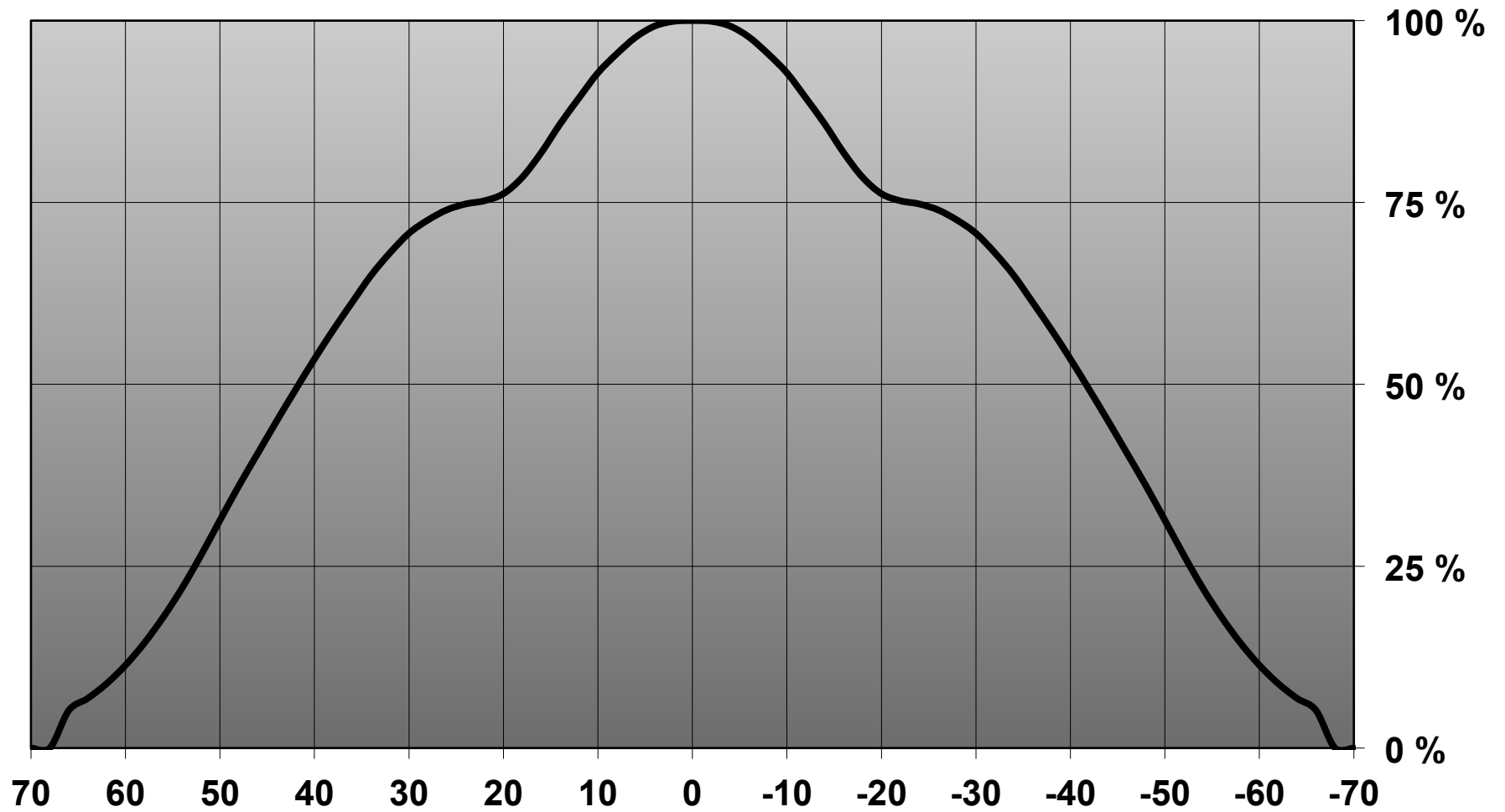
OPTICAL PROPERTIES

LED	Viewing Angle	Light Beam	Efficiency	cd/lm	Connector
XQ-E	sim: 70	WWW-class	sim: 81 %	sim: 0.600	-
Z5	sim: 70	WWW-class	-	-	-
XB-D	73 deg	WWW-class	71 %	sim: 0.000	-
LUXEON Z	73 deg	WWW-class	75 %	0.600	-
XP-E	84 deg	WWW-class	77 %	0.500	-
XP-G	86 deg	WWW-class	75 %	0.400	-
LUXEON A	86 deg	WWW-class	72 %	0.300	-
LUXEON Rebel ES	88 deg	WWW-class	-	sim: 0.000	-

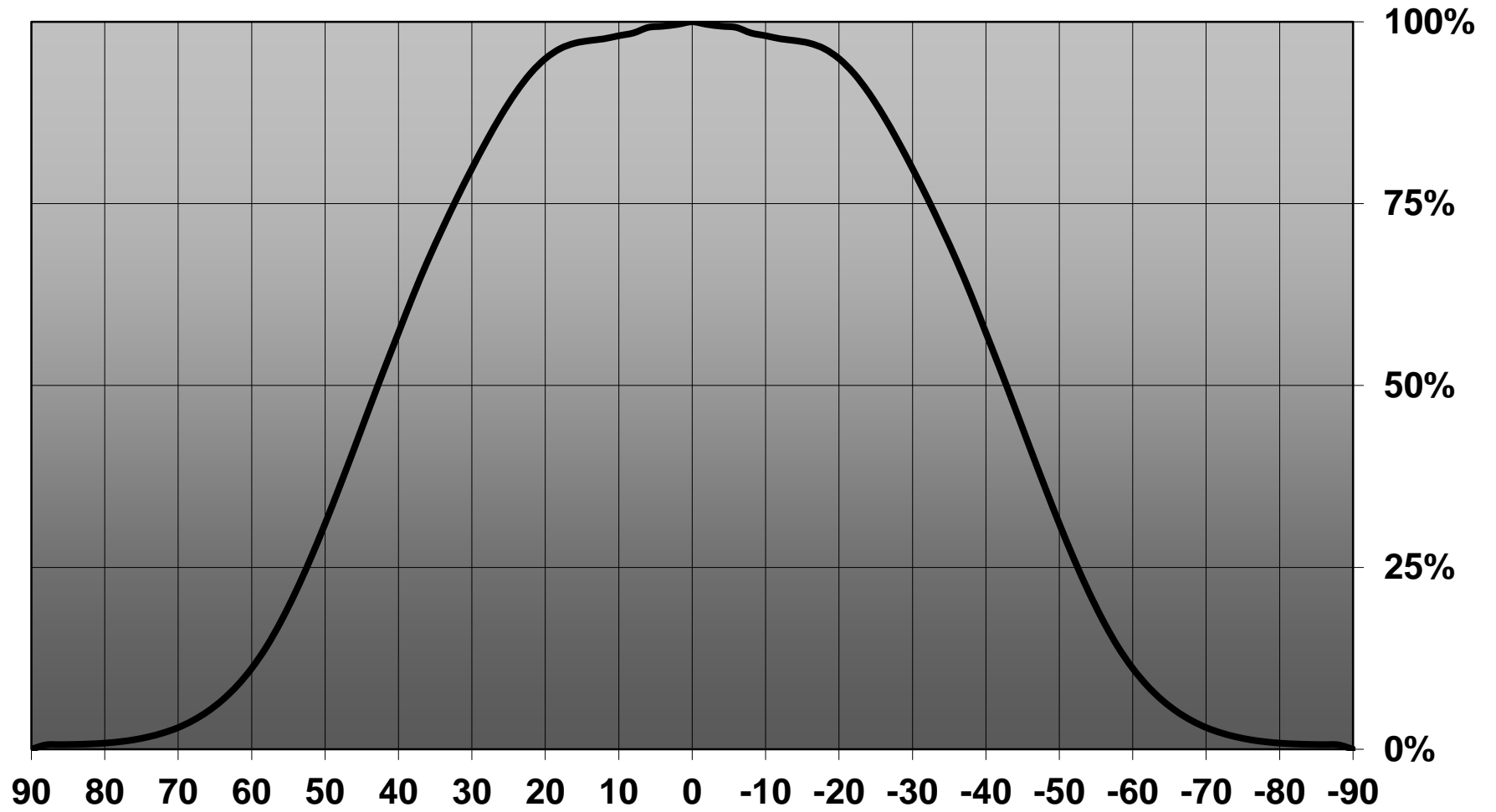
Relative intensity of FP11429_LISA2-WWW-PIN_(Luxeon Z)



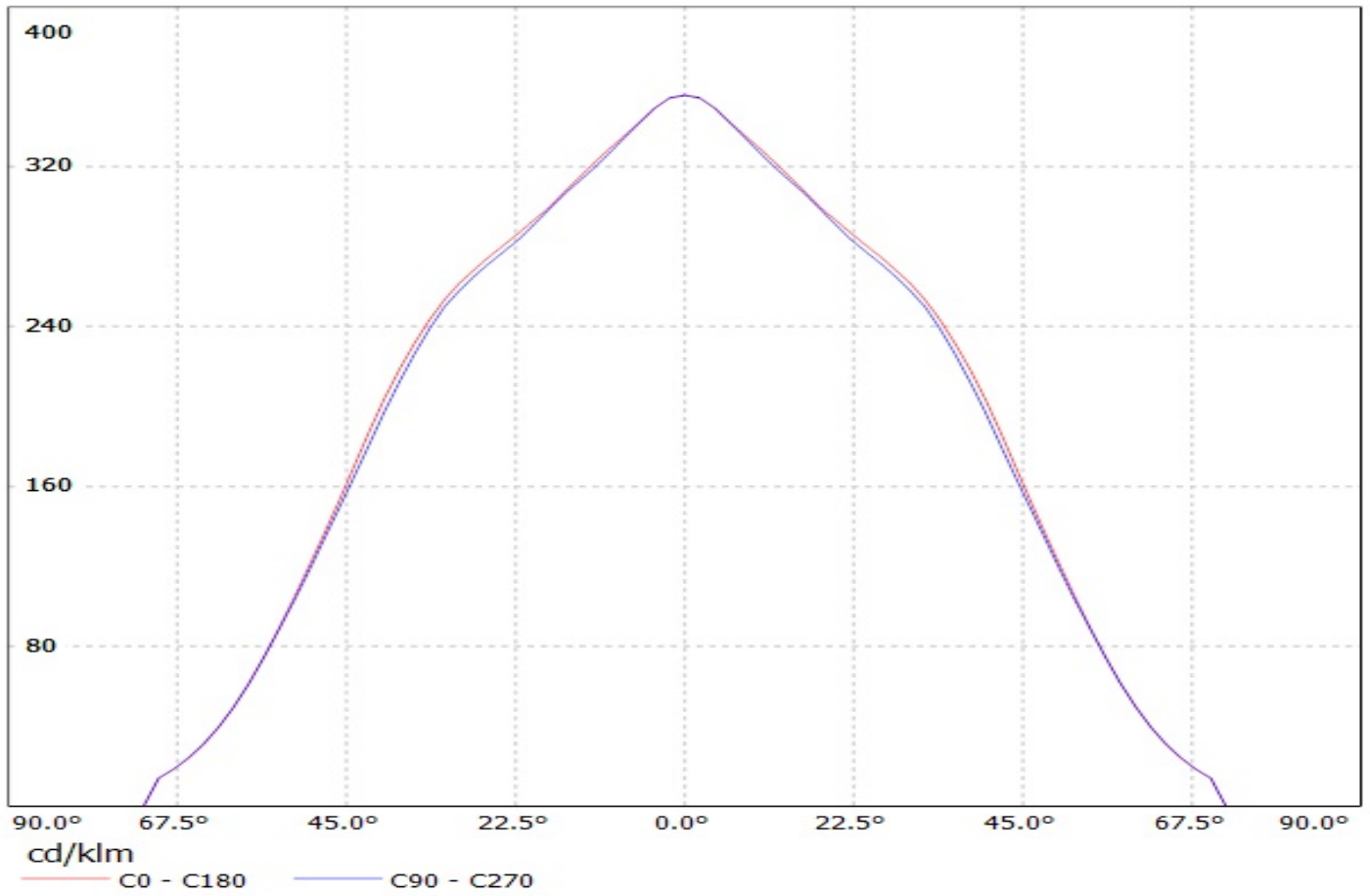
**Relative intensity of FP11431_LISA2-WWW-CLIP &
FP11429_LISA2-WWW-PIN**



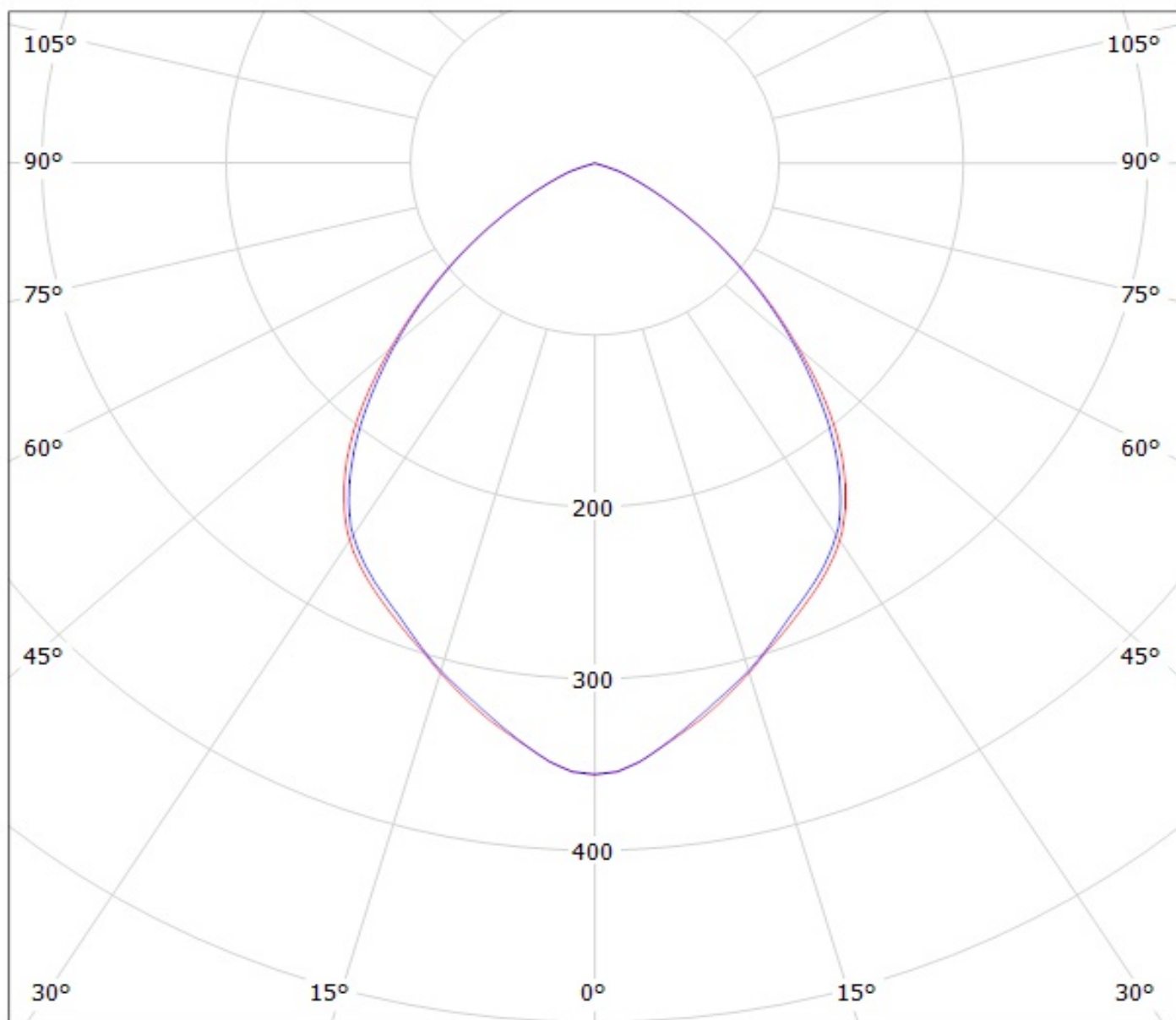
Relative intensity of FP11429_LISA2-WWW-PIN-LuxA



Luminaire: Ledil Oy FA11429_Lisa2-WWW-Pin-XP-G FA11429_Lisa2-WWW-Pin-XP-G
Lamps: 1 x Cree XP-G white



Luminaire: Ledil Oy FA11429_Lisa2-WWW-Pin-XP-G FA11429_Lisa2-WWW-Pin-XP-G
Lamps: 1 x Cree XP-G white



cd/klm

— C0 - C180

— C90 - C270

NOTE: The typical divergence will be changed by different color, chip size and chip position tolerance. The typical total divergence is the full angle measured where the luminous intensity is half of the peak value.