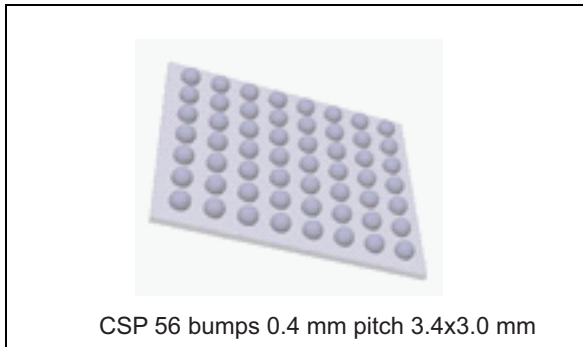


Intelligent matrix LED display driver

Datasheet - preliminary data



Features

- Operating input voltage range from 2.7 V to 5.5 V
- 5x24 LED matrix driver
- Adjustable luminance separately for each LED thanks to internal registers in 255 steps
- Internal registers store 2 patterns
- 4-way scroll function with the possibility to lock column data
- PWM dimming in 255 steps
- Adjustable blanking time
- Automatic slope function
- Cycle time and slope time adjustable for each dot separately
- SPI interface
- Integrated step-up converter with adjustable output voltage
- Integrated LDO with 3.1 V output @ 80 mA
- Boost efficiency 92% at 350 mA
- 2.4 MHz switching frequency
- CSP 56 bumps 0.4 mm pitch 3.4x3.0 mm

Applications

- Appliance user interfaces
- Display driver for handheld units

Description

The STLED524 is a 5x24 dot matrix LED display driver. It can drive each dot with a current up to 20 mA. Rows of the matrix are multiplexed. Each LED in a row is driven by a separate low-side current mirror. Current regulators are supplied by an integrated boost DC-DC converter. Its output voltage can be adjusted by the internal register to optimize efficiency according to the type of LEDs (their forward voltage). This reduces current mirror power dissipation and improves overall efficiency. The STLED524 also includes an internal LDO regulator, which can provide a supply voltage for an additional circuitry. Maximum current, provided by each current mirror, is adjusted by R_{SET} resistor. Current of each LED (dot) can be dimmed in 255 steps due to settings of internal registers.

The STLED524 features PWM dimming in 255 steps. Automatic slope function is also supported. Cycle time and slope time can be adjusted for each LED (dot) separately.

Two patterns can be stored in internal registers. The automatic scrolling of the display content is possible in 4 ways.

Table 1. Device summary

| Order code | Package | Packaging |
|------------|---------|---------------|
| STLED524 | CSP | Tape and reel |

Contents

| | | |
|----------|---|-----------|
| 1 | Application schematic | 8 |
| 2 | Absolute maximum ratings | 11 |
| 3 | Electrical characteristics | 12 |
| 4 | Detailed description | 15 |
| 4.1 | Boost converter | 15 |
| 4.2 | LED matrix | 16 |
| 4.2.1 | Blanking time | 16 |
| 4.3 | LED current setting | 18 |
| 4.4 | Patterns | 19 |
| 4.4.1 | Pattern register organization | 19 |
| 4.4.2 | Display size | 20 |
| 4.5 | Description of registers | 21 |
| 4.5.1 | Software control register | 21 |
| 4.5.2 | Display control register | 21 |
| 4.5.3 | Clock register | 22 |
| 4.5.4 | Column control register | 23 |
| 4.5.5 | Row control register | 24 |
| 4.5.6 | Blanking time register | 24 |
| 4.5.7 | Boost control register | 25 |
| 4.5.8 | Display visual control register | 25 |
| 4.5.9 | PWM control register | 26 |
| 4.5.10 | Scroll control 1, scroll control 2 and scroll control 3 registers | 27 |
| 4.5.11 | Interrupt enable register | 27 |
| 4.5.12 | Latch register | 28 |
| 4.5.13 | Status register | 28 |
| 4.5.14 | Scroll step register | 29 |
| 4.5.15 | Version register | 29 |
| 4.6 | Slope mode operation | 29 |
| 4.7 | Scrolling | 32 |
| 4.7.1 | Scroll control registers | 32 |
| 4.7.2 | Locking columns and rows | 34 |

| | | |
|----------|--|-----------|
| 4.7.3 | Scroll possibilities | 35 |
| 4.7.4 | Scroll examples | 38 |
| 4.8 | Combining PWM, slope and scroll | 40 |
| 4.9 | SPI | 41 |
| 4.9.1 | Command byte | 43 |
| 4.9.2 | Address byte | 43 |
| 4.9.3 | SPI timing | 44 |
| 4.9.4 | Writing and reading multiple bytes at once | 46 |
| 4.10 | Protections and interrupts | 47 |
| 4.10.1 | Registers related to protections and interrupts | 47 |
| 4.10.2 | Overvoltage protection | 48 |
| 4.10.3 | Thermal protection | 49 |
| 4.10.4 | Open ISET protection | 49 |
| 4.10.5 | Short ISET protection | 49 |
| 4.10.6 | Row transistor protection | 49 |
| 4.10.7 | Boost output voltage OK | 49 |
| 4.10.8 | EOSCR and step interrupts | 50 |
| 4.11 | Shutdown mode | 50 |
| 4.12 | Undervoltage lockout | 50 |
| 5 | List of control registers | 51 |
| 6 | Application information | 55 |
| 6.1 | Pattern examples | 55 |
| 6.1.1 | Example 1 - rectangle | 55 |
| 6.1.2 | Example 2 - dimming settings | 57 |
| 6.1.3 | Example 3 - slope settings | 59 |
| 6.1.4 | Example 4 - delay settings | 61 |
| 6.1.5 | Example 5 - Writing pattern data into pattern 1 memory | 62 |
| 6.2 | Operation examples | 65 |
| 6.2.1 | Example 6 - how to display patterns | 65 |
| 6.2.2 | Example 7 - how to enable slope operation | 65 |
| 6.2.3 | Example 8 - how to enable PWM operation | 66 |
| 6.2.4 | Example 8 - scroll operation | 66 |
| 6.3 | Multiple devices in cascade | 68 |
| 6.3.1 | Register setup for the STLED524 cascade | 68 |

| | | |
|----------|--------------------------------------|-----------|
| 7 | Package mechanical data | 69 |
| 8 | Revision history | 71 |

List of tables

| | | |
|-----------|---|----|
| Table 1. | Device summary | 1 |
| Table 2. | Typical external components | 9 |
| Table 3. | Pin description | 10 |
| Table 4. | Absolute maximum ratings | 11 |
| Table 5. | Thermal data | 11 |
| Table 6. | Electrical characteristics | 12 |
| Table 7. | Boost control register bits | 15 |
| Table 8. | Boost output voltage | 15 |
| Table 9. | Blanking time register | 18 |
| Table 10. | Impact of blanking time on the maximum PWM duty cycle. | 18 |
| Table 11. | Dimming, slope and delay registers of one dot. | 19 |
| Table 12. | Dimming, slope and delay registers of one dot (memory organization) | 19 |
| Table 13. | Register addresses in pattern 1 | 20 |
| Table 14. | Register addresses in pattern 2 | 20 |
| Table 15. | Content of columns 20-23. | 20 |
| Table 16. | Software control register. | 21 |
| Table 17. | Display control register | 21 |
| Table 18. | DISP bits. | 21 |
| Table 19. | Clock register | 22 |
| Table 20. | SYNC pin behavior | 23 |
| Table 21. | Column control 1 register | 23 |
| Table 22. | Column control 2 register | 24 |
| Table 23. | Column control 3 register | 24 |
| Table 24. | Row control register | 24 |
| Table 25. | Blanking time duration | 24 |
| Table 26. | Display visual control register. | 25 |
| Table 27. | PWM control register | 26 |
| Table 28. | Interrupt enable register | 27 |
| Table 29. | Latch register (read only) | 28 |
| Table 30. | Status register (read only) | 28 |
| Table 31. | Interrupt overview | 29 |
| Table 32. | Version register. | 29 |
| Table 33. | Delay duration. | 30 |
| Table 34. | Slope cycle duration | 30 |
| Table 35. | Scroll control register 1 | 32 |
| Table 36. | Scroll speed | 32 |
| Table 37. | Scroll direction | 32 |
| Table 38. | Scroll control register 2 | 33 |
| Table 39. | Scroll control register 3 | 33 |
| Table 40. | Wait time during scroll operation | 33 |
| Table 41. | Scroll step register | 34 |
| Table 42. | Column lock register 1 | 34 |
| Table 43. | Column lock register 2 | 34 |
| Table 44. | Column lock register 3 | 34 |
| Table 45. | Row lock register | 34 |
| Table 46. | List of all scroll operations | 35 |
| Table 47. | SPI commands | 43 |
| Table 48. | SPI values. | 43 |

| | | |
|-----------|---|----|
| Table 49. | SPI addresses | 43 |
| Table 50. | SPI timings | 46 |
| Table 51. | Interrupt enable register | 47 |
| Table 52. | Latch register (read only) | 48 |
| Table 53. | Status register (read only) | 48 |
| Table 54. | List of control registers | 51 |
| Table 55. | Pattern data for example 1 | 56 |
| Table 56. | Pattern data for example 2 | 58 |
| Table 57. | Pattern data for example 3 | 59 |
| Table 58. | Pattern data for example 4 | 61 |
| Table 59. | SPI data for writing pattern from example 3 to pattern 1 memory | 63 |
| Table 60. | SPI data to display pattern 1 | 65 |
| Table 61. | SPI data to display pattern 2 | 65 |
| Table 62. | SPI data to enable slope operation | 65 |
| Table 63. | SPI data to display pattern 1 | 66 |
| Table 64. | SPI data to display pattern 2 | 66 |
| Table 65. | SPI data to enable PWM operation (PWM control register = 128) | 66 |
| Table 66. | SPI data to display in pattern 1 | 66 |
| Table 67. | SPI data to display in pattern 1(example 5) | 67 |
| Table 68. | SPI data for scroll setup | 67 |
| Table 69. | SPI data to enable scroll operation with blank rows/columns | 67 |
| Table 70. | SPI data to start scroll operation | 67 |
| Table 71. | Cascade register setup | 68 |
| Table 72. | CSP 56 bumps (3.4x3.0 mm) mechanical data | 70 |
| Table 73. | Document revision history | 71 |

List of figures

| | | |
|------------|--|----|
| Figure 1. | Application schematic | 8 |
| Figure 2. | Pin configuration (top view) | 9 |
| Figure 3. | LED matrix coordinates | 16 |
| Figure 4. | LED matrix timing | 17 |
| Figure 5. | Internal to external clock transition | 22 |
| Figure 6. | Slope cycle operation | 29 |
| Figure 7. | Duty cycle increments during phase 1 of slope operation | 31 |
| Figure 8. | Truncation of duty cycle steps during slope operation | 31 |
| Figure 9. | Basic scroll operation | 36 |
| Figure 10. | Scroll operation with blank row/column insertion enabled | 37 |
| Figure 11. | Scroll operation with enabled wait cycle | 37 |
| Figure 12. | Examples of scroll (DISP 01→10) | 38 |
| Figure 13. | Example of scroll when DISPSIZE = 1 (DISP 01 → 10) | 39 |
| Figure 14. | Example of scroll with 2 inserted blank rows (BRCEN=1, DISP 01 → 10) | 40 |
| Figure 15. | Light output in case of enabled PWM and disabled slope | 40 |
| Figure 16. | Light output in case of disabled PWM and enabled slope | 41 |
| Figure 17. | Light output in case of enabled PWM and enabled slope | 41 |
| Figure 18. | Light output in case of enabled scroll | 41 |
| Figure 19. | SPI protocol (writing) | 42 |
| Figure 20. | SPI protocol (reading) | 42 |
| Figure 21. | Serial input timing | 44 |
| Figure 22. | Serial output timing | 45 |
| Figure 23. | Multiple byte writing at once | 46 |
| Figure 24. | Multiple byte reading at once | 47 |
| Figure 25. | BSTOK bit behavior | 50 |
| Figure 26. | Example 1 | 55 |
| Figure 27. | Example 2 | 57 |
| Figure 28. | Example 3 | 59 |
| Figure 29. | Example 4 | 61 |
| Figure 30. | STLED524 cascade | 68 |
| Figure 31. | CSP 56 bumps (3.4x3.0 mm) drawings | 69 |

1 Application schematic

Figure 1. Application schematic

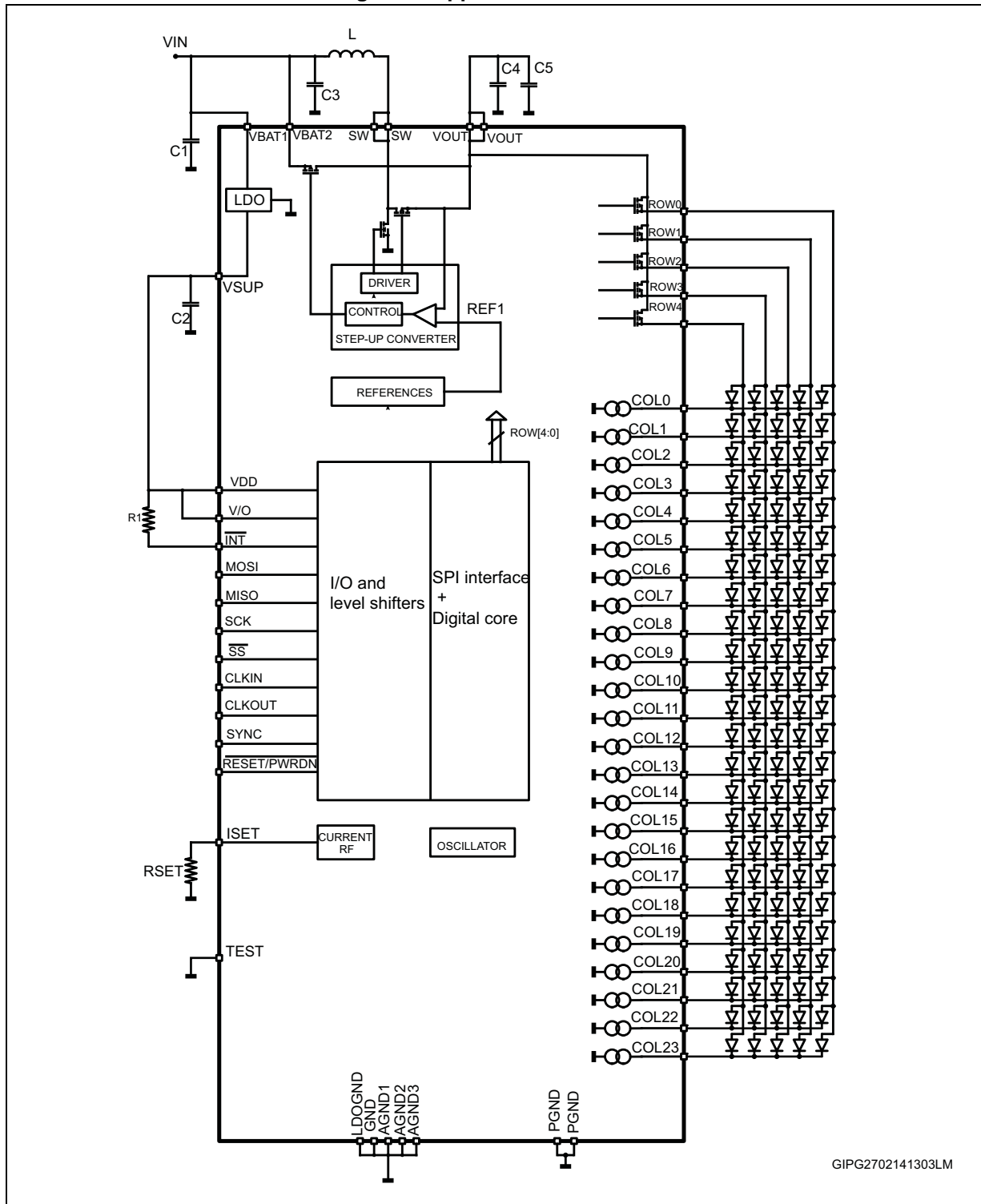


Table 2. Typical external components

| Component | Manufacturer | Part number | Value | Size |
|------------------|--------------|--------------------|-------------|----------------|
| C1 | Murata | GRM188R60J106ME84D | 10 μ F | 0603 |
| C2 | Murata | GRM188R60J106ME84D | 10 μ F | 0603 |
| C3 | Murata | GRM188R60J106ME84D | 10 μ F | 0603 |
| C4 | Murata | GRM21AR60J226ME47L | 22 μ F | 0805 |
| C5 | Murata | GRM21AR60J226ME47L | 22 μ F | 0805 |
| L | Murata | LQM2HPN1R0MJC | 1.0 μ H | 2.0x1.6x0.9 mm |
| R _{SET} | | | 25 k | 0402 |
| R1 | | | 15 k | 0402 |

Note: All above components refer to a typical application. The device operation is not limited to the choice of these external components.

Figure 2. Pin configuration (top view)

| | 1 | 2 | 3 | 4 | 5 | 6 | 7 |
|---|--------|-------|-------|-------|--------|-------|------|
| A | GND | VDD | RESET | VSUP | VBAT1 | PGND | PGND |
| B | CLKOUT | CLKIN | SCK | ISET | LDOGND | SW | SW |
| C | MISO | MOSI | INT | TEST | VBAT2 | VOUT | VOUT |
| D | VIO | SYNC | SS | COL23 | COL0 | AGND1 | ROW0 |
| E | COL21 | COL20 | COL19 | COL22 | COL8 | COL1 | ROW1 |
| F | COL18 | COL17 | COL15 | COL9 | COL3 | COL2 | ROW2 |
| G | COL16 | COL13 | COL11 | AGND2 | COL6 | COL4 | ROW3 |
| H | COL14 | COL12 | COL10 | AGND2 | COL7 | COL5 | ROW4 |

GIPG2702141312LM

Table 3. Pin description

| Name | Pin | Description |
|-------------|---|---|
| VBAT1 | A5 | LDO supply voltage connection ⁽¹⁾ |
| VBAT2 | C5 | Supply voltage connection ⁽¹⁾ |
| SW | B6, B7 | Coil connection |
| VOUT | C6, C7 | Step-up converter output voltage |
| VSUP | A4 | LDO output voltage |
| ROW 0-4 | D7, E7, F7, G7, H7 | Matrix row connections |
| COL 0-23 | D4, D5 E1-E6, F1-F6, G1-G3, G5-G6, H1-H3, H5-H6 | Matrix column connections |
| PGND | A6, A7 | Power ground |
| AGND1 | D6 | Analog ground 1 |
| AGND2 | G4, H4 | Analog ground 2 |
| GND | A1 | Ground |
| VDD | A2 | Logic supply voltage |
| VIO | D1 | I/O pin supply voltage |
| RESET/PWRDN | A3 | Reset input, active low. When low, the device is in shutdown mode |
| MISO | C1 | Master IN slave OUT (SPI bus) |
| MOSI | C2 | Master OUT slave IN (SPI bus) |
| SS | D3 | Slave select (SPI bus) |
| SCK | B3 | SPU bus clock |
| CLKIN | B2 | Clock input |
| CLKOUT | B1 | Clock output |
| SYNC | D2 | Synchronization input |
| INT | C3 | Interrupt open drain output |
| LDOGND | B5 | Boost output voltage setup resistor connection |
| ISET | B4 | Reference current adjustment resistor connection |
| TEST | C4 | Test input. It has to be connected to GND |

1. Both VBAT1 and VBAT2 have to be supplied, even though LDO is not used to supply other devices.

2 Absolute maximum ratings

Table 4. Absolute maximum ratings

| Symbol | Parameter | Value | Unit |
|--|--|-------------------|------|
| VBAT1, VBAT2 | Supply voltage | -0.3 to +6 | V |
| SW | Switching node | -0.3 to +6 | V |
| VOUT | Output voltage | -0.3 to +6 | V |
| VSUP | LDO output voltage | -0.3 to 3.6 | V |
| VDD | Logic supply voltage | -0.3 to 3.6 | V |
| VIO | I/O pin supply voltage | -0.3 to 3.6 | V |
| ROW 0-4 | Row switches | -0.3 to VOUT +0.3 | V |
| COL 0-23 | Column current mirrors | -0.3 to +6 | V |
| MISO, MOSI, SCK, SS, INT, THA, CLKIN, CLKOUT, SYNC, RESET | Signal pins | -0.3 to +6 | V |
| ISET | Current setting | -0.3 to 2 | V |
| ESD | Machine model | ±200 | V |
| | Human body model | ±2000 | |
| | Charged device model | ±250 | |
| T _{AMB} | Operating ambient temperature | -30 to 85 | °C |
| T _J | Maximum operating junction temperature | +125 | °C |
| T _{STG} | Storage temperature | -40 to 150 | °C |

Note: Absolute maximum ratings are those values beyond which damage to the device may occur. Functional operation under these conditions is not implied.

Table 5. Thermal data

| Symbol | Parameter | Value | Unit |
|-------------------|-------------------------------------|-------|------|
| R _{thJA} | Thermal resistance junction-ambient | 62 | °C/W |

Note: This parameter corresponds to the PCB board, 8 layers with 1 inch² of cooling area.

3 Electrical characteristics

- 30 °C < T_A < 85 °C, V_{IN} = 2.7 V; V_{OUT} = 4.0 V; typical values are at T_A = 25 °C, unless otherwise specified.

Table 6. Electrical characteristics

| Symbol | Parameter | Test conditions | Min. | Typ. | Max. | Unit |
|---------------------------|--|--|------|------|------|------|
| General section | | | | | | |
| V _{IN} | Operating power input voltage range | | 2.7 | 3.7 | 5.5 | V |
| V _{IO} | Supply voltage of I/O pins | | 1.8 | | 3.6 | V |
| V _{DD} | Digital supply voltage ⁽¹⁾ | | | 3.1 | | V |
| I _{SHDN} | Shutdown mode | | | 2 | 10 | μA |
| V _{UVLO} | Undervoltage lockout threshold (when reset is high) | V _{UVLOR} (V _{IN} rising) | | 2.5 | 2.6 | V |
| | | V _{UVLOF} (V _{IN} falling) | 2.3 | 2.4 | | |
| Boost | | | | | | |
| f _{SW} | Switching frequency | | 2.16 | 2.4 | 2.64 | MHz |
| I _{OUT} | Continuous output current | V _{IN} = 3.5 V | | 480 | | mA |
| V _{OUT} | Boost output voltage | V _{IN} = 3.0 V | 2.8 | | 4.6 | V |
| I _{PK} | Inductor peak current | | | 1.5 | | A |
| η | Boost efficiency (V _{IN} = 3.7 V; V _{OUT} = 4.0 V) | I _{OUT} = 350 mA (PS mode) | | 92 | | % |
| V _{OVP} | Overvoltage protection | | | 5.8 | 6 | V |
| V _{OVPHYST} | Overvoltage protection hysteresis | | | 200 | | mV |
| V _{BSTOKHYST} | Hysteresis of BST_OK comparator | | | 250 | | mV |
| LDO | | | | | | |
| V _{SUP} | LDO output voltage | V _{IN} = 3.3 V | | 3.1 | | V |
| ΔV _{SUP} | LDO output accuracy | V _{IN} = 3.3 V I _{OUT} = 1 mA | | 2 | 3 | % |
| I _{LDO} | LDO output current | V _{IN} = 3.3 V | | 80 | 100 | mA |
| I _Q | LDO quiescent current | V _{IN} = 3.3 V I _{OUT} = 80 mA | | 1.4 | | μA |
| Thermal protection | | | | | | |

Table 6. Electrical characteristics (continued)

| Symbol | Parameter | Test conditions | Min. | Typ. | Max. | Unit |
|---|---|--|----------------|------|--------------|---------------|
| T_{SHDN1} | Thermal shutdown (boost and CM) | | | 150 | | °C |
| $T_{SHDN1HYST}$ | Hysteresis | | | 20 | | |
| T_{SHDN2} | Thermal shutdown (LDO) | | | 170 | | |
| $T_{SHDN2HYST}$ | Hysteresis | | | 20 | | |
| LED current | | | | | | |
| $I_{LED0-LED23}$ | Current matching | $I_{COLx} = 20 \text{ mA}$, $V_{OUT} > V_{LED} + V_{CSH}$ | | | 5 | % |
| ΔI_{LEDx} | Absolute channel accuracy | $I_{COLx} = 20 \text{ mA}$, $V_{OUT} > V_{LED} + V_{CSH}$ | -7.5 | | +7.5 | % |
| V_{SET} | Voltage reference | $R_{SET} = 25 \text{ k}$ | 1.225 | 1.25 | 1.275 | V |
| | Current mirror ratio | I_{LED} / I_{SET} | | 400 | | A/A |
| V_{CSH} | Current source headroom voltage (COLx to GND) | | 200 | | | mV |
| I_{RIPPLE} | LED peak-to-peak current ripple ⁽²⁾ | $V_{IN} = 3.0 \text{ V}$; $I_{LED} = 20 \text{ mA}$ in all channels | -15 | | +15 | % |
| I_{LED_MAX} | Current mirror max. current | $R_{SET} = 20 \text{ k}\Omega$ | 22 | 25 | | mA |
| t_{SET} | LED current settling time (current reaches 90% of the target value) | $I_{COLx} = 20 \text{ mA}$ | | 1 | | μs |
| | | $I_{COLx} = 1 \text{ mA}$ | | 10 | | |
| Logic inputs: MOSI, SCK, SS | | | | | | |
| V_{IL} | Low-level input voltage | $V_{IO} = 1.8 \text{ V to } 3.6 \text{ V}$ | | | $0.3 V_{IO}$ | V |
| V_{IH} | High-level input voltage | $V_{IO} = 1.8 \text{ V to } 3.6 \text{ V}$ | $0.7 V_{IO}$ | | | V |
| I_{LK-H} | Input leakage current in high-level | $V_{IO} = 3.6 \text{ V}$ | | | 2 | μA |
| I_{LK-L} | Input leakage current in low-level | $V_{IO} = 3.6 \text{ V}$ | | | 2 | μA |
| Logic inputs: CLKIN, SYNK, RESET | | | | | | |
| V_{IL} | Low-level input voltage | $V_{IO} = 1.8 \text{ V to } 3.6 \text{ V}$ | | | $0.3 V_{IO}$ | V |
| V_{IH} | High-level input voltage | $V_{IO} = 1.8 \text{ V to } 3.6 \text{ V}$ | $0.7 V_{IO}$ | | | V |
| I_{LK-H} | Input leakage current in high-level | $V_{IO} = 3.6 \text{ V}$ | | | 2 | μA |
| I_{LK-L} | Input leakage current in low-level | $V_{IO} = 3.6 \text{ V}$ | | | 2 | μA |
| Logic outputs | | | | | | |
| V_{OL} | Low-level output voltage | $I_{OL} = 2 \text{ mA}$ | | | 0.4 | V |
| V_{OH} | High-level output voltage | $I_{OH} = 2 \text{ mA}$, $V_{IO} = 3.0 \text{ V}$ | $V_{IO} - 0.4$ | | | V |
| Clocks | | | | | | |
| f_{OSC} | Internal oscillator frequency | $V_{IN} = 2.7 \text{ V to } 5.5 \text{ V}$ | 540 | 600 | 660 | kHz |

Table 6. Electrical characteristics (continued)

| Symbol | Parameter | Test conditions | Min. | Typ. | Max. | Unit |
|--------------------------|--|--|------|-------|------|--------------------|
| d _{CLKOUT} | Duty cycle of the clock out signal | | | 60 | | |
| f _{EXT_MAX} | Maximum frequency of the external clock signal | V _{IN} = 2.7 V to 5.5 V | | | 1.25 | MHz |
| d _{CLKIN} | Duty cycle of the external clock signal | V _{IN} = 2.7 V to 5.5 V | 30 | | 70 | % |
| T _{INTTOEXTCLK} | Transition time from internal to external clock | | 10 | | | T _{CLKEX} |
| Power switches | | | | | | |
| R _{DS(on)} | P-channel on-resistance (boost) | | | 230 | | mΩ |
| | N-channel on-resistance (boost) | | | 130 | | mΩ |
| R _{DS(on)} | P-channel on-resistance (ROW 0 to ROW 4) | | | 500 | | mΩ |
| | N-channel on-resistance (ROW 0 to ROW 4) | | | 200 | | mΩ |
| R _{DS(on)} | Bypass switch on-resistance | | | | | mΩ |
| I _{LKG-LX} | Coil leakage current | V _{IN} = V _{SW2} = 4.0 V | | | 1 | μA |
| Time and delay | | | | | | |
| T _{CLK} | Clock period | | | 1.667 | | μs |
| T _{RTCR} | Delay between row rising edge and column rising edge | | 1 | | 8 | T _{CLK} |
| T _{RTCF} | Delay between column falling edge and row falling edge | | 1 | | 8 | |
| T _{ONMIN} | PWM minimum on-time | | | 2 | | |
| T _{ONMAX} | PWM maximum on-time | | | 510 | | |
| T _{FRAME} | Frame period | | | 2560 | | |
| T _{ROW} | Row duration | | | 512 | | |
| Reset | | | | | | |
| T _{RST} | Minimum pulse width on RESET pin | | 100 | | | μs |

1. It is strongly recommended to connect VDD pin to VSUP pin directly.
2. It is valid only if LED matrix is not farther than 10 cm from the driver, otherwise ceramic capacitors should be connected between COLx pin and ground to improve ripple.

4 Detailed description

The STLED524 is a 5x24 LED dot matrix display driver. It includes 24 low-side current mirrors (for each LED in a row). Rows are multiplexed by 5 internal PMOS transistors. Current mirrors are supplied by the integrated boost converter. Its output voltage is adjustable so it can be adapted to the forward voltage of LEDs. It reduces power dissipation and improves efficiency.

4.1 Boost converter

The step-up bridge with current mode control regulation provides output voltage according to the value of VOUT[3:0] register. This voltage should be adjusted to be high enough to provide sufficient headroom to regulate current sources connected to COL 0-23 pins. On the other hand, keeping boost output voltage unnecessarily high, increases power dissipation and degrades efficiency.

Boost incorporates a zero current comparator. When the input voltage is close to the output voltage, pulse-skipping is applied to keep the output voltage regulated.

If the input voltage is higher than desired output voltage, boost switches to bypass mode automatically. In this mode, the output voltage is equal to the input voltage lowered by voltage drop on the PMOS transistor.

Boost converter is enabled only when BSTEN bit in the boost control register is set to 1. VOUT setting shouldn't be changed when boost is on (BSTEN=1).

Table 7. Boost control register bits

| Boost control | Bit 7 | Bit 6 | Bit 5 | Bit 4 | Bit 3 | Bit 2 | Bit 1 | Bit 0 |
|---------------|-------|-------|-------|-------|-------|-------|-------|-------|
| Add = 16h | BSTEN | - | - | - | VOUT3 | VOUT2 | VOUT1 | VOUT0 |
| Default | 0 | 0 | 0 | 0 | 1 | 0 | 1 | 0 |

BSTEN = 0, boost is disabled

BSTEN = 1, boost is enabled

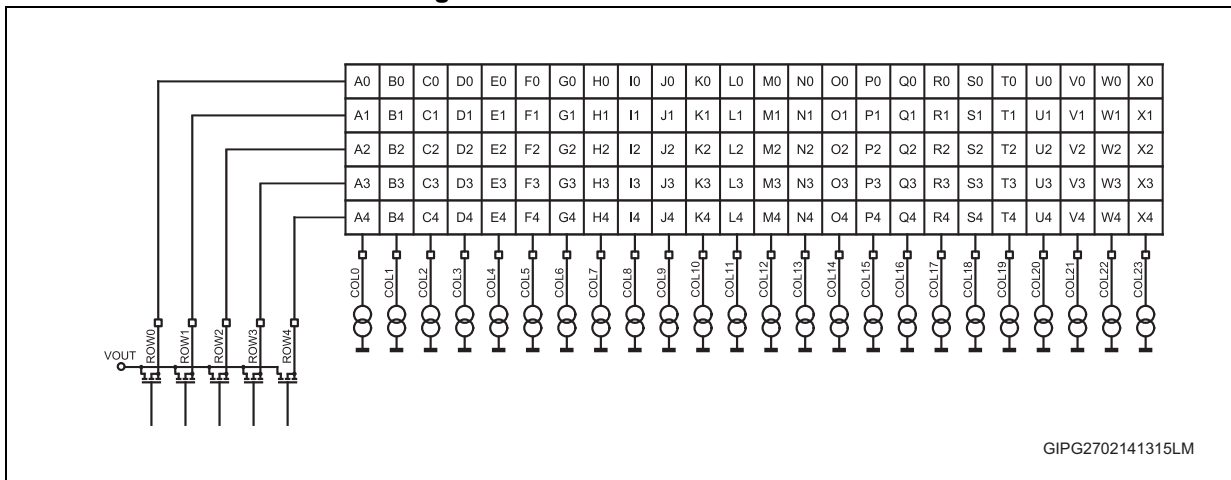
Table 8. Boost output voltage

| VOUT[3:0] | 00 | 01 | 02 | 03 | 04 | 05 | 06 | 07 | 08 | 09 | 0A | 0B | 0C | 0D | 0E | 0F |
|----------------------|------|------|------|------|------|------|------|------|------|------|------|------|------|------|------|------|
| V _{OUT} [V] | 2.80 | 2.92 | 3.04 | 3.16 | 3.28 | 3.40 | 3.52 | 3.64 | 3.76 | 3.88 | 4.00 | 4.12 | 4.24 | 4.36 | 4.48 | 4.60 |

One step = 120 mV

4.2 LED matrix

Figure 3. LED matrix coordinates

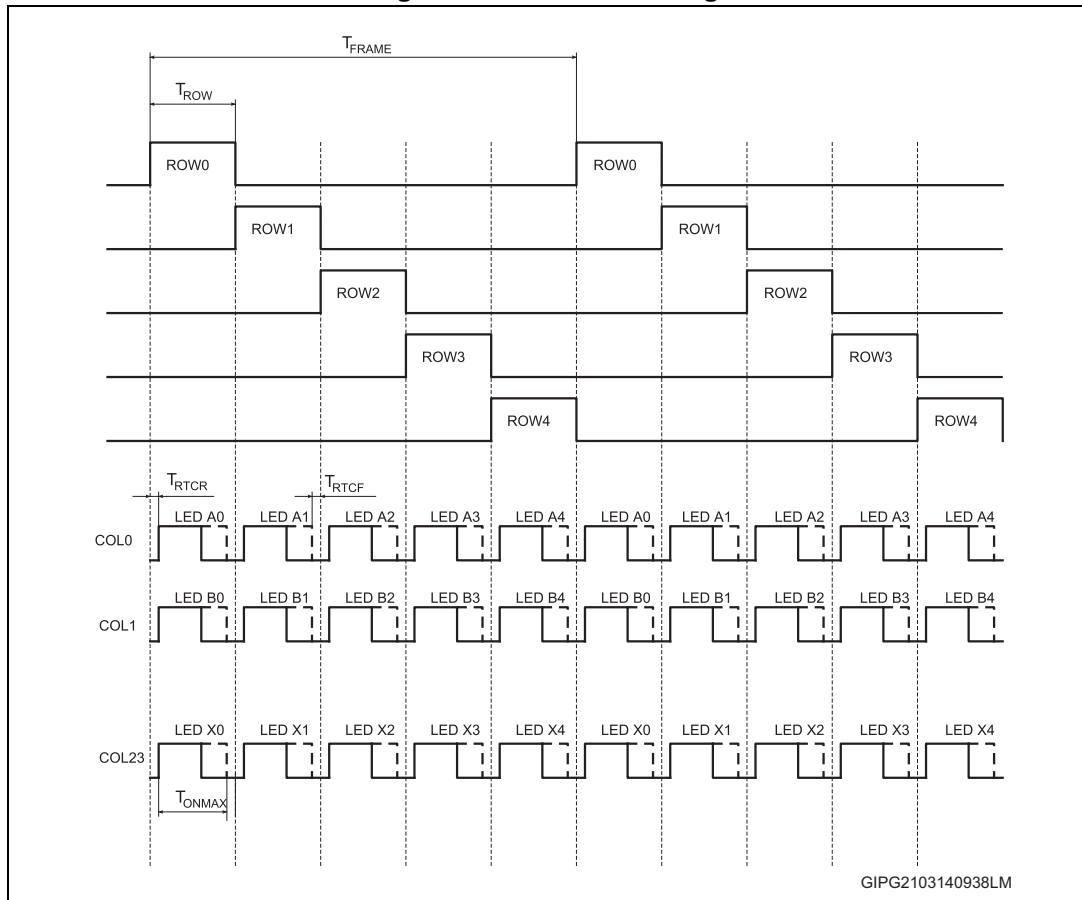


LED matrix rows are connected to ROW 0-4 pins. Columns are connected to COL 0-23 pins.

4.2.1 Blanking time

Rows are multiplexed by T_{ROW} period according to [Figure 4](#). The duration of one row is given by $T_{ROW} = T_{FRAME} / 5$, but the maximum dot on-time is $T_{ONMAX} = T_{ROW} - (T_{RTCR} + T_{RTCF})$ only.

Figure 4. LED matrix timing



T_{RTICR} and T_{RTICF} are adjustable due to the blanking time register. If a blanking time is set longer than $2 T_{CLK}$, maximum PWM duty cycle is limited according to [Table 10](#).

Table 9. Blanking time register

| Blanking time | Bit 7 | Bit 6 | Bit 5 | Bit 4 | Bit 3 | Bit 2 | Bit 1 | Bit 0 |
|---------------|-------|-------|-------|-------|-------|----------|-------|-------|
| Add = 15h | - | - | - | - | - | BLK[2:0] | | |
| Default | - | - | - | - | - | 0 | 0 | 0 |

Table 10. Impact of blanking time on the maximum PWM duty cycle

| Blanking time register value | Blanking time [T _{CLK}] | T _{RTCR} [T _{CLK}] | T _{RTCF} [T _{CLK}] | Max. PWM duty cycle |
|------------------------------|-----------------------------------|---------------------------------------|---------------------------------------|---------------------|
| 000 | 2 | 1 | 1 | 255/255 |
| 001 | 4 | 2 | 2 | 254/255 |
| 010 | 6 | 3 | 3 | 253/255 |
| 011 | 8 | 4 | 4 | 252/255 |
| 100 | 10 | 5 | 5 | 251/255 |
| 101 | 12 | 6 | 6 | 250/255 |
| 110 | 14 | 7 | 7 | 249/255 |
| 111 | 16 | 8 | 8 | 248/255 |

4.3 LED current setting

Although each current mirror can sink up to ~35 mA (that is more than test conditions), the following conditions have to be met:

- The sum of all current mirrors should not exceed 600 mA in bypass mode.
- The sum of all current mirrors should not exceed 480 mA in boost mode.
- If sum of all current mirrors exceeds test conditions, it may exceed the related specifications. The device is not guaranteed to sink current greater than test conditions.

Maximum current of all current mirrors can be adjusted by R_{SET} resistor value according to the following formula:

Equation 1

$$I_{LEDMAX} = \frac{V_{SET}}{R_{SET}} \times 400$$

where: V_{SET} = 1.25 V typically.

Current of each dot can be adjusted in its register, so each LED may have an independent setting of current.

Current can be adjusted in 255 steps; 1 step represents approximately 0.392% of I_{LEDMAX}. Current settings are carried out by Dn_xx registers, where n is the pattern number and xx are the coordinates of a dot in the matrix.

To avoid false activation of the short or open ISET pin protection, the minimum value of R_{SET} should be higher than 14 kΩ and lower than 270 kΩ.

4.4 Patterns

The STLED524 includes the memory for 2 patterns of 5x24 dots. Each dot in a pattern has 2 registers for its setting.

One 8-bit register stores dimming settings. The other one is 4-bit only and stores information about slope and delay.

Table 11. Dimming, slope and delay registers of one dot

| Dimming | Bit 7 | Bit 6 | Bit 5 | Bit 4 | Bit 3 | Bit 2 | Bit 1 | Bit 0 |
|-----------------------|-------------|-------|-------|-------|--------------|-------|--------------|-------|
| Add = nnh | Dn_xx[7:0] | | | | | | | |
| Default value | Not defined | | | | | | | |
| Slope and delay (S&D) | Bit 7 | Bit 6 | Bit 5 | Bit 4 | Bit 3 | Bit 2 | Bit 1 | Bit 0 |
| Add = (nn+1)h | - | - | - | - | PnCYCxx[1:0] | | PnDLYxx[1:0] | |
| Default value | - | - | - | - | Not defined | | Not defined | |

where:

n: is a number of pattern

xx: are coordinates of a dot in the matrix $xx = \{A0, A1, A2, A3, A4, B0, B1, \dots, B4, C0, \dots, X0, X1, X2, X3, X4\}$.

Pattern 1 and pattern 2 memories are not initialized after the reset. They can contain random data. Their content should be reset by CLR1/CLR2 bits.

4.4.1 Pattern register organization

A pair of 8-bit registers is used to set properties of each dot in the matrix.

Table 12. Dimming, slope and delay registers of one dot (memory organization)

| Address 0xnnh | | | | | | | | Address 0x(nn+1)h | | | | | | | |
|------------------|-------|-------|-------|-------|-------|-------|-------|--------------------------|-------|-------|-------|--------------|-------|--------------|-------|
| Dimming register | | | | | | | | Slope and delay register | | | | | | | |
| Bit 7 | Bit 6 | Bit 5 | Bit 4 | Bit 3 | Bit 2 | Bit 1 | Bit 0 | Bit 7 | Bit 6 | Bit 5 | Bit 4 | Bit 3 | Bit 2 | Bit 1 | Bit 0 |
| Dn_xx[7:0] | | | | | | | | - | - | - | - | PnCYCxx[1:0] | | PnDLYxx[1:0] | |

Table 13. Register addresses in pattern 1

| Address | Dimming register | Address | Slope and delay register | |
|---------|------------------|---------|--------------------------|--------------|
| 00h | D1_A0[7:0] | 01h | P1CYCA0[1:0] | P1DLYA0[1:0] |
| 02hh | D1_A1[7:0] | 03h | P1CYCA1[1:0] | P1DLYA1[1:0] |
| ... | ... | ... | ... | ... |
| Eeh | D1_X4[7:0] | Efh | P1CYCX4[1:0] | P1DLYX4[1:0] |

Table 14. Register addresses in pattern 2

| Address | Dimming register | Address | Slope and delay register | |
|---------|------------------|---------|--------------------------|--------------|
| 00h | D2_A0[7:0] | 01h | P2CYCA0[1:0] | P2DLYA0[1:0] |
| 02h | D2_A1[7:0] | 03h | P2CYCA1[1:0] | P2DLYA1[1:0] |
| ... | ... | ... | ... | ... |
| Eeh | D2_X4[7:0] | Efh | P2CYCX4[1:0] | P2DLYX4[1:0] |

4.4.2 Display size

If DISPSIZE bit is set to 1, the content of columns 20-23 is always linked to pattern 1 regardless of the value of DISP bits. Columns 0-19 can still be used as a display, while columns 20-23 can be used for other functions.

If DISPSIZE bit is set to 1, the content of pattern 2 is also limited to columns 0-19 only. Columns 20-23 are not displayed during scrolling.

The minimum number of scroll steps in horizontal direction is reduced to 20, if DISPSIZE = 1.

Table 15. Content of columns 20-23

| DISP | DISPSIZE | COL 0-19 | COL 20-23 |
|------|----------|-----------|-----------|
| 00 | 0 | Blank | Blank |
| 01 | 0 | Pattern 1 | Pattern 1 |
| 10 | 0 | Pattern 2 | Pattern 2 |
| 00 | 1 | Blank | Pattern 1 |
| 01 | 1 | Pattern 1 | Pattern 1 |
| 10 | 1 | Pattern 2 | Pattern 1 |

4.5 Description of registers

4.5.1 Software control register

Table 16. Software control register

| Software control | Bit 7 | Bit 6 | Bit 5 | Bit 4 | Bit 3 | Bit 2 | Bit 1 | Bit 0 |
|------------------|-------|-------|-------|-------|-------|-------|-------|-------|
| Add = 00h | SWRST | - | - | - | - | CLR2 | CLR1 | EN |
| Default | 0 | 0 | 0 | 0 | 0 | 0 | 0 | 0 |

When CLR1 is set to 1, pattern 1 is cleared, (dimming, slope and delay of all dots are set to 0) then it is set to 0 automatically.

When CLR2 is set to 1, pattern 2 is cleared, (dimming, slope and delay of all dots are set to 0) then it is set to 0 automatically.

If SWRST bit is set to 1, content of all registers is set to default values and SWRST bit is cleared automatically.

If EN = 0, display is off

If EN = 1, display is on

4.5.2 Display control register

Table 17. Display control register

| Display control | Bit 7 | Bit 6 | Bit 5 | Bit 4 | Bit 3 | Bit 2 | Bit 1 | Bit 0 |
|-----------------|-------|-------|-------|-------|-------|-------|-------|-------|
| Add = 01h | - | - | - | - | - | - | DISP2 | DISP1 |
| Default | 0 | 0 | 0 | 0 | 0 | 0 | 0 | 0 |

DISP1 and DISP2 bits define which pattern is displayed, see [Table 18](#).

Table 18. DISP bits

| DISP2 | DISP1 | Displayed pattern |
|-------|-------|--|
| 0 | 0 | No pattern is displayed (blank screen) |
| 0 | 1 | Pattern 1 is displayed |
| 1 | 0 | Pattern 2 is displayed |
| 1 | 1 | No pattern is displayed (blank screen) |

DISP bits can be written by SPI anytime, but the display change (from pattern 1 to pattern 2 or vice versa) is performed according to the following rules:

- On next frame, if the display is on and scroll features are disabled (EN=1, SCRLEN=0).
- If SCRLEN=1 and EN=1, scroll operation starts according to the scroll setup.

4.5.3 Clock register

This register is used to set up clock signals.

Table 19. Clock register

| Clock | Bit 7 | Bit 6 | Bit 5 | Bit 4 | Bit 3 | Bit 2 | Bit 1 | Bit 0 |
|-----------|-------|-------|-------|--------|---------|--------|-------|--------|
| Add = 10h | - | - | - | REFSEL | SYNCSEL | SYNCEN | CLKIN | CLKOUT |
| Default | 0 | 0 | 0 | 0 | 1 | 0 | 0 | 0 |

CLKOUT = 0, CLKOUT pin does not provide any clock signal. It is permanently low

CLKOUT = 1, CLKOUT pin provides CLK signal

CLKIN = 0, clock signal from the internal oscillator is used for display timings

CLKIN = 1, clock signal from CLKIN pin is used for display timings

SYNCEN = 0, driver operation synchronization is disabled by an external signal connected to SYNC pin

SYNCEN = 1, driver operation synchronization is enabled by an external signal connected to SYNC pin

SYNCSEL = 0, driver operation is enabled when SYNC signal is low

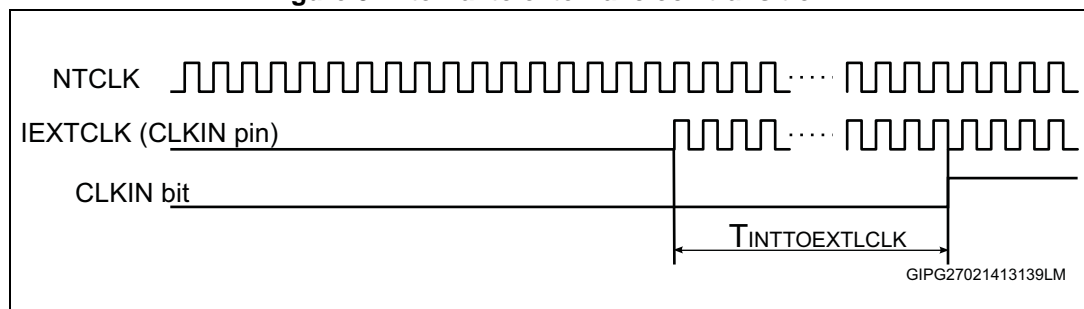
SYNCSEL = 1, driver operation is enabled when SYNC signal is high

REFSEL = 0, external reference defined by R_{SET} value is used for current mirrors

REFSEL = 1, internal reference is used for current mirrors

If the clock signal changes from internal to external, the external clock has to be provided, at least T_{INTTOEXTCLK} before than CLKIN bit is set to 1.

Figure 5. Internal to external clock transition



SYNC pin behavior

If the synchronization is enabled (SYNCEN = 1), SYNC pin is in inactive state (defined by SYNCSEL bit) and the micro writes EN, DISP or SLPEN bits, but the corresponding operation is delayed, until SYNC pin gets to the active state.

If the synchronization is disabled (SYNCEN = 0), the micro writes EN, DISP or SLPEN bits, and the corresponding operation starts immediately.

Table 20. SYNC pin behavior

| SYNCEN bit | SYNCSEL bit | SYNC pin | Operation |
|------------|-------------|----------|---|
| 0 | 0 | 0 | Not synchronized |
| 0 | 0 | 1 | Not synchronized |
| 0 | 1 | 0 | Not synchronized |
| 0 | 1 | 1 | Not synchronized |
| 1 | 0 | 0 | Synchronized, but the bit change has immediate effect |
| 1 | 0 | 1 | Synchronized, the operation is delayed, until SYNC pin is 0 |
| 1 | 1 | 0 | Synchronized, the operation is delayed, until SYNC pin is 1 |
| 1 | 1 | 1 | Synchronized, but bit change has immediate effect |

4.5.4 Column control register

These registers are used to enable/disable columns of the matrix.

Table 21. Column control 1 register

| Column control 1 | Bit 7 | Bit 6 | Bit 5 | Bit 4 | Bit 3 | Bit 2 | Bit 1 | Bit 0 |
|------------------|--------|--------|--------|--------|--------|--------|--------|--------|
| Add = 11h | COL7EN | COL6EN | COL5EN | COL4EN | COL3EN | COL2EN | COL1EN | COL0EN |
| Default | 1 | 1 | 1 | 1 | 1 | 1 | 1 | 1 |

Table 22. Column control 2 register

| Column control 2 | Bit 7 | Bit 6 | Bit 5 | Bit 4 | Bit 3 | Bit 2 | Bit 1 | Bit 0 |
|------------------|---------|---------|---------|---------|---------|---------|--------|--------|
| Add = 12h | COL15EN | COL14EN | COL13EN | COL12EN | COL11EN | COL10EN | COL9EN | COL8EN |
| Default | 1 | 1 | 1 | 1 | 1 | 1 | 1 | 1 |

Table 23. Column control 3 register

| Column control 3 | Bit 7 | Bit 6 | Bit 5 | Bit 4 | Bit 3 | Bit 2 | Bit 1 | Bit 0 |
|------------------|---------|---------|---------|---------|---------|---------|---------|---------|
| Add = 13h | COL23EN | COL22EN | COL21EN | COL20EN | COL19EN | COL18EN | COL17EN | COL16EN |
| Default | 1 | 1 | 1 | 1 | 1 | 1 | 1 | 1 |

COL<i>EN = 0, column <i> is disabled

COL<i>EN = 1, column <i> is enabled

These bits can be read or written in any configuration, but these registers should be changed when EN=0.

4.5.5 Row control register

This register is used to enable/disable rows of the matrix.

Table 24. Row control register

| Row control | Bit 7 | Bit 6 | Bit 5 | Bit 4 | Bit 3 | Bit 2 | Bit 1 | Bit 0 |
|-------------|-------|-------|-------|--------|--------|--------|--------|--------|
| Add = 14h | - | - | - | ROW4EN | ROW3EN | ROW2EN | ROW1EN | ROW0EN |
| Default | 0 | 0 | 0 | 1 | 1 | 1 | 1 | 1 |

ROW<i>EN = 0, row <i> is disabled

ROW<i>EN = 1, row <i> is enabled

These bits can be read or written in any configuration, but these registers should be registered when EN=0.

4.5.6 Blanking time register

This register sets the blanking time duration.

Table 25. Blanking time duration

| Blanking time | Bit 7 | Bit 6 | Bit 5 | Bit 4 | Bit 3 | Bit 2 | Bit 1 | Bit 0 |
|---------------|-------|-------|-------|-------|-------|----------|-------|-------|
| Add = 16h | - | - | - | - | - | BLK[2:0] | | |
| Default | 0 | 0 | 0 | 0 | 0 | 0 | 0 | 0 |

BLK[2:0] - blanking time duration

000: 2 clock periods

001: 4 clock periods

010: 6 clock periods

011: 8 clock periods

100: 10 clock periods

101: 12 clock periods

110: 14 clock periods

111: 16 clock periods

These bits can be read or written in any configuration, these registers should be changed when EN=0. See [Section 4.2.1](#) for details.

4.5.7 Boost control register

This register is described in [Section 4.1](#).

4.5.8 Display visual control register

This register enables/disables the driver visual features.

Table 26. Display visual control register

| Display visual control | Bit 7 | Bit 6 | Bit 5 | Bit 4 | Bit 3 | Bit 2 | Bit 1 | Bit 0 |
|------------------------|-------|-------|-------|--------|-------|--------|-------|----------|
| Add = 20h | - | - | BRCEN | WAITEN | SLPEN | SCRLEN | PWMEN | DISPSIZE |
| Default | 0 | 0 | 0 | 0 | 0 | 0 | 0 | 0 |

PWMEN = 0, PWM duty cycle is fixed to maximum available

PWMEN = 1, PWM duty cycle can be customized by PWM control register

SCRLEN = 0, scrolling is disabled

SCRLEN = 1, scrolling is enabled

SLPEN = 0, slope operation is disabled

SLPEN = 1, slope operation is enabled

WAITEN = 0, wait time at the end of scroll operation is disabled

WAITEN = 1, wait time at the end of scroll operation is enabled

BRCEN = 0, insertion of blank rows/columns during scroll operation is disabled

BRCEN = 1, insertion of blank rows/columns during scroll operation is enabled

DISPSIZE = 0, full number of columns is used to display content of patterns 1 and 2

DISPSIZE = 1, content of columns 20-23 is always linked to pattern 1 regardless of the value of DISP bits. If content of pattern 2 is displayed, then columns 0-19 are visible. The rest is "hidden behind" in the columns 20-23 that display content of pattern 1 permanently.

Note: Setting $EN=0$, the display turns off immediately.

If PWM is enabled / disabled while a slope cycle is running, new PWM settings have effect as described in PWM control register.

When $SLPEN$ is set to 0, slope is disabled immediately, regardless of the current slope status for each dot.

When $SCRLEN$ is set to 0, the display reverts immediately to its target pattern (given by $DISP$ bit values), aborting any scrolling cycle.

4.5.9 PWM control register

This register is used to set PWM duty cycle.

Table 27. PWM control register

| PWM control | Bit 7 | Bit 6 | Bit 5 | Bit 4 | Bit 3 | Bit 2 | Bit 1 | Bit 0 |
|-------------|----------|-------|-------|-------|-------|-------|-------|-------|
| Add = 21h | PWM[7:0] | | | | | | | |
| Default | 0 | 0 | 0 | 0 | 0 | 0 | 0 | 0 |

PWM[7:0] represents PWM duty cycle value

PWM[7:0] = 0x00h represents 0/255 duty cycle (0%)

PWM[7:0] = 0x01h represents 1/255 duty cycle (0.4%)

PWM[7:0] = 0x80h represents 128/255 duty cycle (50.2%)

PWM[7:0] = 0xFFh represents 255/255 duty cycle (100%)

PWM control register is accessible anytime, but a change of its value is evident only if PWM operation is enabled ($PWMEN=1$). PWM is a global setting valid for all dots.

PWM duty cycle changes next frame period.

If slope operation is active, new settings of PWM are applied according to slope cycle evolution:

- During slope phase 1 (PWM ramp-up), PWM setting change is applied only if PWM value is lower than the new value.
- During slope phase 2 (PWM at maximum), PWM setting change is ignored and it takes effect during next slope cycle.
- During 3 and 4 slope phase, new PWM settings don't have any effect and they take effect during next slope cycle.

If blanking time is longer than default, the highest values in PWM register are not valid and the maximum allowed value is applied. See [Section 4.2.1](#).

4.5.10 Scroll control 1, scroll control 2 and scroll control 3 registers

These registers are described in [Section 4.7](#).

4.5.11 Interrupt enable register

Table 28. Interrupt enable register

| Interrupt enable | Bit 7 | Bit 6 | Bit 5 | Bit 4 | Bit 3 | Bit 2 | Bit 1 | Bit 0 |
|------------------|---------|---------|---------|--------|---------|--------|-------|-------|
| Add = 40h | BSTOK_M | ROWSC_M | EOSCR_M | STEP_M | SHORT_M | OPEN_M | THP_M | OVP_M |
| Default | 0 | 0 | 0 | 0 | 0 | 0 | 0 | 0 |

OVP_M = 0, the interrupt generated by overvoltage protection is disabled

OVP_M = 1, the interrupt generated by overvoltage protection is enabled

THP_M = 0, the interrupt generated by overtemperature protection is disabled

THP_M = 1, the interrupt generated by overtemperature protection is enabled

OPEN_M = 0, the interrupt generated by open R_{SET} protection is disabled

OPEN_M = 1, the interrupt generated by open R_{SET} protection is enabled

SHORT_M = 0, the interrupt generated by short R_{SET} protection is disabled

SHORT_M = 1, the interrupt generated by short R_{SET} protection is enabled

STEP_M = 0 the interrupt generated at the beginning of a scroll step is disabled

STEP_M = 1, the interrupt generated at the beginning of a scroll step is enabled

EOSCR_M = 0, the interrupt generated at the end of scroll operation is disabled

EOSCR_M = 1, the interrupt generated at the end of scroll operation is enabled

ROWSC_M = 0, the interrupt generated by row short-circuit is disabled

ROWSC_M = 1, the interrupt generated by row short-circuit is enabled

BSTOK_M = 0, the interrupt generated is disabled, when boost output voltage reaches the target value

BSTOK_M = 1, the interrupt generated is enabled, when the boost output voltage reaches the target value

4.5.12 Latch register

Table 29. Latch register (read only)

| Latch | Bit 7 | Bit 6 | Bit 5 | Bit 4 | Bit 3 | Bit 2 | Bit 1 | Bit 0 |
|-----------|-------|-------|-------|-------|-------|-------|-------|-------|
| Add = 41h | BSTOK | ROWSC | EOSCR | STEP | SHORT | OPEN | THP | OVP |
| Default | 0 | 0 | 0 | 0 | 0 | 0 | 0 | 0 |

Bits in this register are set when the corresponding interrupt occurs and they are latched. Those bits, which have been set, can only be cleared by reading the register through SPI.

4.5.13 Status register

Table 30. Status register (read only)

| Status | Bit 7 | Bit 6 | Bit 5 | Bit 4 | Bit 3 | Bit 2 | Bit 1 | Bit 0 |
|-----------|-------|-------|-------|-------|-------|-------|-------|-------|
| Add = 42h | BSTOK | - | EOSCR | - | SHORT | OPEN | THP | OVP |
| Default | 0 | 0 | 1 | 0 | 0 | 0 | 0 | 0 |

Bits in the status register are set and reset according to the state of internal signals (overtemperature, overvoltage etc.). Reading the status register through SPI does not affect the state of bits.

BSTOK bit is set to 1 when V_{OUT} voltage has reached the target value. The bit is set to 0, if V_{OUT} is lower than $V_{OUTSET} - V_{BSTOKHYST}$. V_{OUTSET} is the target output voltage given by VOUT[3:0] register. $V_{BSTOKHYST}$ is the hysteresis of BST_OK comparator. An interrupt is generated, it is enabled and BSTOK bit in the latch register is set.

THP bit is set when thermal protection has been activated (when junction temperature exceeds T_{SHDN1}). The bit is reset if the temperature falls below $T_{SHDN1HYST}$ thermal protection hysteresis. An interrupt is generated, when THP bit is set, if it is enabled and THP bit is set in the latch register. When the thermal protection is activated, EN and BSTEN bits are set to 0. The device has to be re-enabled through SPI to restart the operation. An interrupt is also generated when THP bit is reset to 0. So the microcontroller can wait for this interrupt and then re-enable the device.

OVP bit is set when boost output voltage exceeds V_{OVP} threshold. The bit is reset, if the voltage falls below the hysteresis of OVP threshold. An interrupt is generated, when this bit is set, if it is enabled and OVP bit in the latch register is set. The boost is disabled automatically, BSTEN bit is set to 0.

R_{SET} resistance is checked when EN bit is set to 1. If R_{SET} value is too high (or it is not connected at all), OPEN bit in the status register is set. An interrupt is generated, if it is enabled and OPEN bit is set in the latch register.

If R_{SET} value is smaller than R_{SETMIN} (typically 14 k Ω), SHORT bit in the status register is set to 1. An interrupt is generated, if it is enabled. Current mirrors and boost are not stopped.

STEP bit is set at the beginning of each scroll step. An interrupt is generated, if it is enabled. It hasn't a corresponding bit in the status register.

EOSCR bit is set, when the scroll operation is over. An interrupt is generated, if it is enabled.

When a short-circuit is detected on any row connections, current mirrors are disabled by setting EN bit to 0 automatically. Boost operation is not touched. An interrupt is generated if it is enabled and ROWSC bit is set in the latch register.

Table 31. Interrupt overview

| Latch register bit | Interrupt generated when set | Interrupt generated when reset |
|--------------------|------------------------------|--------------------------------|
| BSTOK | Yes | Yes |
| ROWSC | Yes | No |
| EOSCR | Yes | No |
| SHORT | Yes | No |
| OPEN | Yes | No |
| THP | Yes | Yes |
| OVP | Yes | No |

4.5.14 Scroll step register

This register is described in [Section 4.7.1](#)

4.5.15 Version register

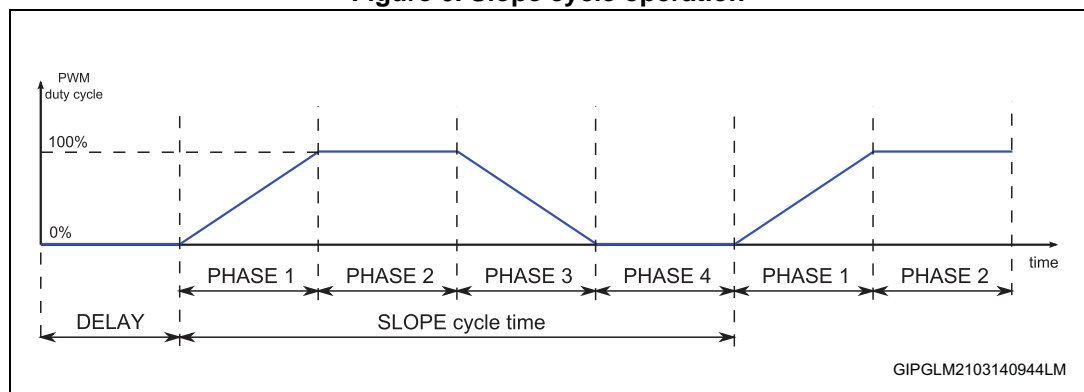
Table 32. Version register

| Version | Bit 7 | Bit 6 | Bit 5 | Bit 4 | Bit 3 | Bit 2 | Bit 1 | Bit 0 |
|-----------|-------|-------|-------|-------|----------|-------|-------|-------|
| Add = FFh | - | - | - | - | VER[3:0] | | | |
| Default | 0 | 0 | 0 | 0 | 0 | 0 | 0 | 1 |

The version register contains information about the version of the chip.

4.6 Slope mode operation

Figure 6. Slope cycle operation



A delay and a slope cycle time can be specified for each dot of the matrix separately.

The delay is set by PnDLYxx bits, n is a pattern number (see [Section 4.4](#)) and xx are the coordinates of a dot.

Table 33. Delay duration

| PnDLYxx | Delay time |
|---------|-----------------------------|
| 00 | No delay |
| 01 | 1/4 of the slope cycle time |
| 10 | 1/2 of the slope cycle time |
| 11 | 3/4 of the slope cycle time |

Slope cycle time is set by PnCYCxx bits, n is a pattern number (see [Section 4.4](#)) and xx are the coordinates of a dot.

Table 34. Slope cycle duration

| PnCYCxx | Cycle time [s] | Duration of one phase [s] | Duty cycle step |
|---------|----------------|---------------------------|-----------------|
| 00 | 0 | 0 | 0 |
| 01 | 1.456 | 0.364 | 3 |
| 10 | 2.184 | 0.546 | 2 |
| 11 | 4.367 | 1.092 | 1 |

PWM duty cycle is incremented / decremented during slope operation in steps stated in [Table 32](#). If the final value of PWM duty cycle given by the value in PWM duty register is not a multiple of the duty cycle step, then last step in phase 1 is truncated to reach the final value of PWM duty cycle given by PWM duty register. Therefore, last step in phase 3 is truncated to reach 0 duty cycle. See [Figure 8](#).

Figure 7. Duty cycle increments during phase 1 of slope operation

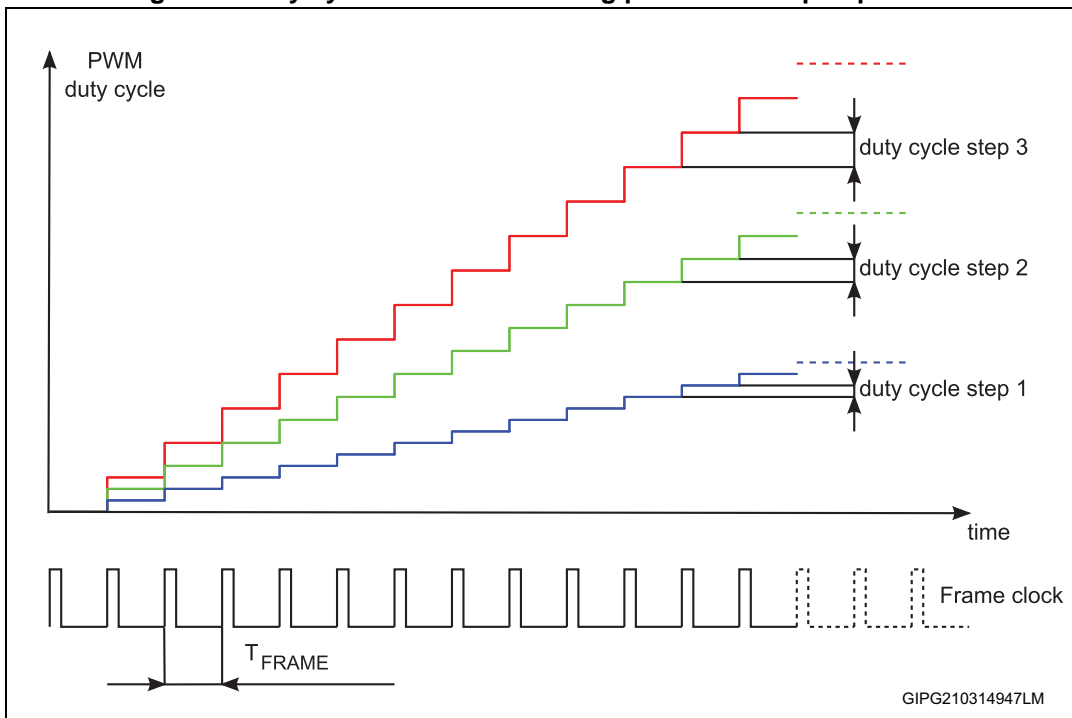
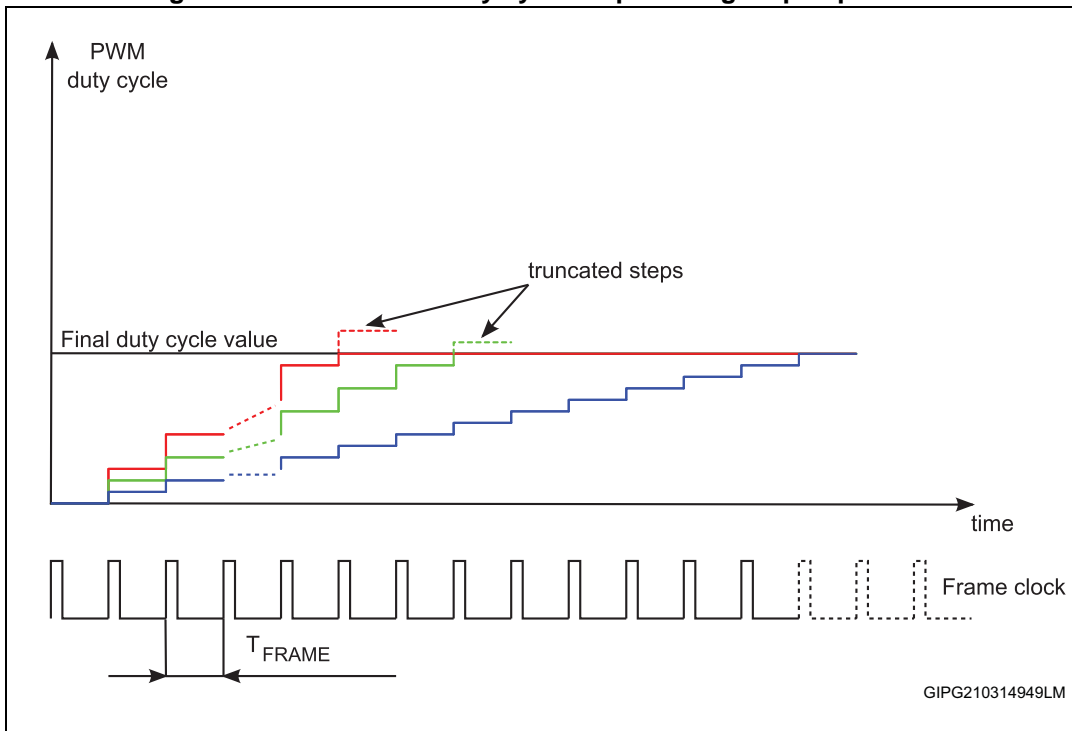


Figure 8. Truncation of duty cycle steps during slope operation



If SLPEN is set to 0 during the slope cycle, slope cycle is not finished and the display goes to the new operation mode immediately.

4.7 Scrolling

The STLED524 has built-in function of 4-way scroll of the display content. The scroll speed can be defined in 8 steps. Blank rows or columns can be added to patterns to improve readability during scrolling and a wait loop with adjustable duration can be performed at the end of scroll to let reader read the display content.

4.7.1 Scroll control registers

Table 35. Scroll control register 1

| Scroll control 1 | Bit 7 | Bit 6 | Bit 5 | Bit 4 | Bit 3 | Bit 2 | Bit 1 | Bit 0 |
|------------------|-------------|-------|-------|-------|-------|-------|-------|-------|
| Add = 30h | SCRSPD[5:0] | | | | | | DIR1 | DIR0 |
| Default | 0 | 0 | 0 | 0 | 0 | 0 | 0 | 0 |

SCRSPD[5:0] scroll speed register fixes the speed according to which the content of the display is scrolled.

[Table 36](#) shows duration of one scroll step according to SCRSPD[5:0] value.

Table 36. Scroll speed

| SCLSPD[5:0] | 1 step duration | |
|-------------|------------------|-------------------------------------|
| | $[T_{FRAME}]$ | $[ms]^{(1)}$ |
| 0 | 3 | 12.8 |
| 1 | 7 | 29.9 |
| 2 | 11 | 46.9 |
| ... | ... | ... |
| N | $N \times 4 + 3$ | $(N \times 4 + 3) \times 10.24/2.4$ |
| ... | ... | ... |
| 62 | 252 | 1075 |
| 63 | 255 | 1088 |

1. When the internal clock is used.

Table 37. Scroll direction

| DIR1 | DIR0 | Direction |
|------|------|-----------|
| 0 | 0 | Left |
| 0 | 1 | Right |
| 1 | 0 | Down |
| 1 | 1 | Up |

SCRSPD settings can be updated only when scroll is disabled.

DIR bits can be updated only when scroll is disabled.

Table 38. Scroll control register 2

| Scroll control 2 | Bit 7 | Bit 6 | Bit 5 | Bit 4 | Bit 3 | Bit 2 | Bit 1 | Bit 0 |
|------------------|-------------|-------|-------|-------------|-------|-------|-------|-------|
| Add = 31h | BLNK_R[2:0] | | | BLNK_C[4:0] | | | | |
| Default | 0 | 0 | 0 | 0 | 0 | 0 | 0 | 0 |

BLNK_C[4:0] - blank column register. It defines the number of blank columns during horizontal direction scroll (left/right). Maximum allowed value is 24. If the value is higher than 24, 24 blank columns are inserted only. If DISPISIZE = 1, the maximum number of blank columns is limited to 20.

BLNK_R[2:0] - blank row register. It defines the number of blank rows during vertical direction scroll (up/down). Maximum allowed value is 5. If the value is higher than 5, 5 blank rows can be only inserted.

Note: This register cannot be read.

Table 39. Scroll control register 3

| Scroll control 3 | Bit 7 | Bit 6 | Bit 5 | Bit 4 | Bit 3 | Bit 2 | Bit 1 | Bit 0 |
|------------------|-------|-------|-----------|-------|-------|-------|-------|-------|
| Add = 32h | - | - | WAIT[5:0] | | | | | |
| Default | 0 | 0 | 0 | 0 | 0 | 0 | 0 | 0 |

Table 40. Wait time during scroll operation

| WAIT[5:0] | Wait time duration | |
|-----------|-----------------------|------------------------------------|
| | [T _{FRAME}] | [ms] ⁽¹⁾ |
| 0 | 3 | 12.8 |
| 1 | 7 | 29.9 |
| 2 | 11 | 46.9 |
| ... | ... | ... |
| N | $N \times 4 + 3$ | $(N \times 4 + 3) \times 2.56/0.6$ |
| ... | ... | ... |
| 62 | 252 | 1075 |
| 63 | 255 | 1088 |

1. When internal clock is used.

Scroll step register stores the number of scroll steps already fulfilled.

Table 41. Scroll step register

| Scroll steps | Bit 7 | Bit 6 | Bit 5 | Bit 4 | Bit 3 | Bit 2 | Bit 1 | Bit 0 |
|--------------|-------|-------|-------------|-------|-------|-------|-------|-------|
| Add = 43h | - | - | SCRSTP[4:0] | | | | | |
| Default | 0 | 0 | 0 | 0 | 0 | 0 | 0 | 0 |

4.7.2 Locking columns and rows

The content of any column or row can be locked during scroll. The content of locked rows/columns does not move during scroll. Locked rows/columns always display the content of pattern 1.

Any combination of columns can be locked by corresponding bits in the column lock registers. Besides, any combination of rows can be locked by corresponding bits in the row lock register. Columns and rows can be locked at the same time.

Table 42. Column lock register 1

| Column lock 1 | Bit 7 | Bit 6 | Bit 5 | Bit 4 | Bit 3 | Bit 2 | Bit 1 | Bit 0 |
|---------------|--------|--------|--------|--------|--------|--------|--------|--------|
| Add = 33h | COLCK7 | COLCK6 | COLCK5 | COLCK4 | COLCK3 | COLCK2 | COLCK1 | COLCK0 |
| Default | 0 | 0 | 0 | 0 | 0 | 0 | 0 | 0 |

Table 43. Column lock register 2

| Column lock 2 | Bit 7 | Bit 6 | Bit 5 | Bit 4 | Bit 3 | Bit 2 | Bit 1 | Bit 0 |
|---------------|---------|---------|---------|---------|---------|---------|--------|--------|
| Add = 34h | COLCK15 | COLCK14 | COLCK13 | COLCK12 | COLCK11 | COLCK10 | COLCK9 | COLCK8 |
| Default | 0 | 0 | 0 | 0 | 0 | 0 | 0 | 0 |

Table 44. Column lock register 3

| Column lock 3 | Bit 7 | Bit 6 | Bit 5 | Bit 4 | Bit 3 | Bit 2 | Bit 1 | Bit 0 |
|---------------|---------|---------|---------|---------|---------|---------|---------|---------|
| Add = 35h | COLCK23 | COLCK22 | COLCK21 | COLCK20 | COLCK19 | COLCK18 | COLCK17 | COLCK16 |
| Default | 0 | 0 | 0 | 0 | 0 | 0 | 0 | 0 |

Table 45. Row lock register

| Column lock 3 | Bit 7 | Bit 6 | Bit 5 | Bit 4 | Bit 3 | Bit 2 | Bit 1 | Bit 0 |
|---------------|-------|-------|-------|---------|---------|---------|---------|---------|
| Add = 35h | | | | ROWLCK4 | ROWLCK3 | ROWLCK2 | ROWLCK1 | ROWLCK0 |
| Default | 0 | 0 | 0 | 0 | 0 | 0 | 0 | 0 |

4.7.3 Scroll possibilities

The display content scroll is enabled, if SCRLLEN bit in the display visual control register is set to 1. If this bit is 1 and new value of DISP bits (DISP1 and DISP2) is written through SPI, scroll operation starts. The type of scroll operation is defined by the content of scroll control registers.

Blank rows or columns can be inserted between two patterns during the scroll operation. These blank rows/columns are inserted by the logic of the driver automatically, so they are not part of patterns. The number of blank rows/columns can be set by the scroll control register 2. The insertion of blank rows/columns is enabled, when BRCEN bit in the display visual control register is set to 1.

Table 44 contains all possible types of scroll operations. $X \rightarrow Y$ expression means that the display content is X and when the scroll operation is over, it is Y. All possibilities listed below are valid for all directions. DISP (act) is the value of DISP bits. DISP (new) is the new value of these bits written through SPI.

There are two interrupts related to the scroll operation. These are EOSCR (end of scroll) and step. This interrupt is generated at the end of scroll operation (when the new pattern is visible). The end of step interrupt is generated after each scroll step. It is useful to read the scroll step register value, when this interrupt is detected. It gives the microcontroller information about the position of the pattern on the display.

If WAITEN bit in the display visual control register is set, the end of scroll interrupt is delayed by the wait time given by the value of the scroll control 3 register.

Columns from 20 to 23 can be locked during the scroll operation. These locked columns do not move during scroll operation. Their content is always stored in pattern 1 register. DISPSIZE bit, in the display visual control register, has to be set to 1 to lock columns from 20 to 23. If this bit is set to 0, columns from 20 to 23 scroll in the same way as the rest of the display. If DISPSIZE bit is set to 1, the number of scroll steps is limited to 20 in horizontal direction (if no blank column is inserted). The number of steps in vertical direction is not affected.

Table 46. List of all scroll operations

| DISP (act) | DISP (new) | BRCEN | |
|------------|------------|-------|--------------------|
| 00 | 00 | 0 | B → B |
| 00 | 01 | 0 | B → P1 |
| 00 | 10 | 0 | B → P2 |
| 01 | 00 | 0 | P1 → B |
| 01 | 01 | 0 | P1 → P1 (rotation) |
| 01 | 10 | 0 | P1 → P2 |
| 10 | 00 | 0 | P2 → B |
| 10 | 01 | 0 | P2 → P1 |
| 10 | 10 | 0 | P2 → P2 (rotation) |
| 00 | 00 | 1 | B → Brc → B |
| 00 | 01 | 1 | B → Brc → P1 |
| 00 | 10 | 1 | B → Brc → P2 |

Table 46. List of all scroll operations (continued)

| DISP (act) | DISP (new) | BRCEN | |
|------------|------------|-------|-------------------------|
| 01 | 00 | 1 | P1 → Brc →B |
| 01 | 01 | 1 | P1 → Brc →P1 (rotation) |
| 01 | 10 | 1 | P1 → Brc →P2 |
| 10 | 00 | 1 | P2 → Brc →B |
| 10 | 01 | 1 | P2 → Brc →P1 |
| 10 | 10 | 1 | P2 → Brc →P2 (rotation) |

P1 = pattern 1, P2 = pattern 2, B = blank display, Brc = blank rows/columns

Figure 9 shows a scroll operation in vertical direction (5 steps). No blank column or row is inserted and wait time is disabled. As for horizontal direction, the only difference is the number of scroll steps (24 instead of 5). EOSCR bit is set to 1 in the 24th step.

Figure 9. Basic scroll operation

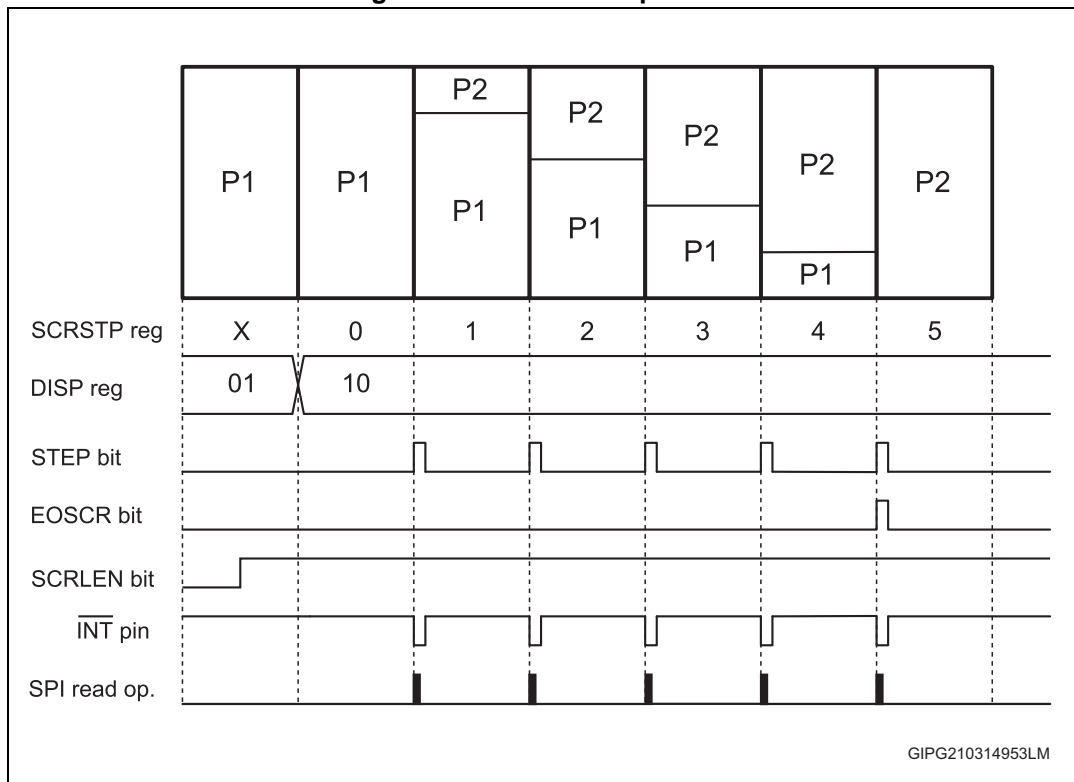


Figure 10 shows a scroll operation with blank row/column insertion enabled. S is the number of standard scroll steps (with blank row/column insertion disabled). S = 24 for horizontal direction and 5 in case of vertical direction, n is the number of blank rows/columns to be inserted.

Figure 10. Scroll operation with blank row/column insertion enabled

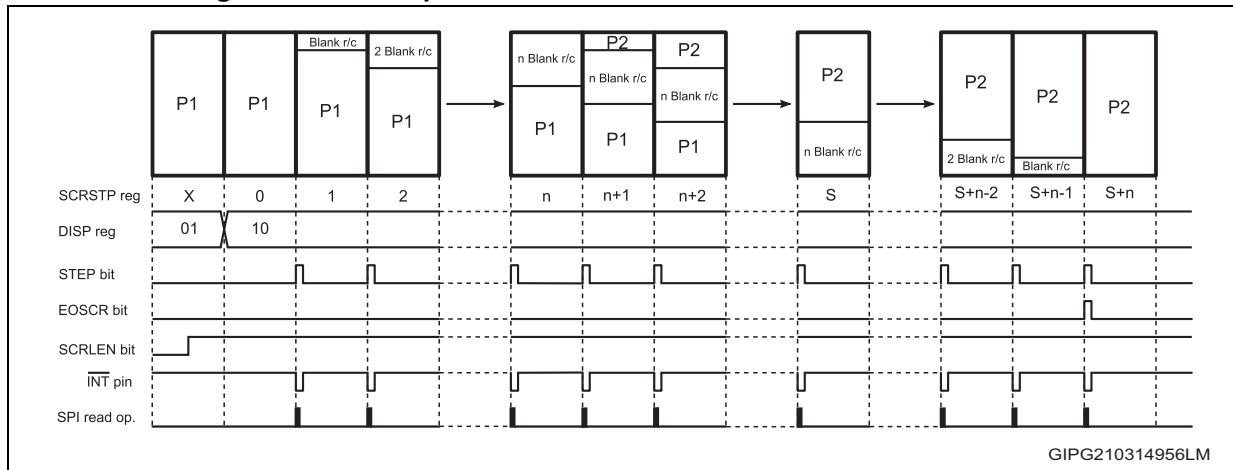
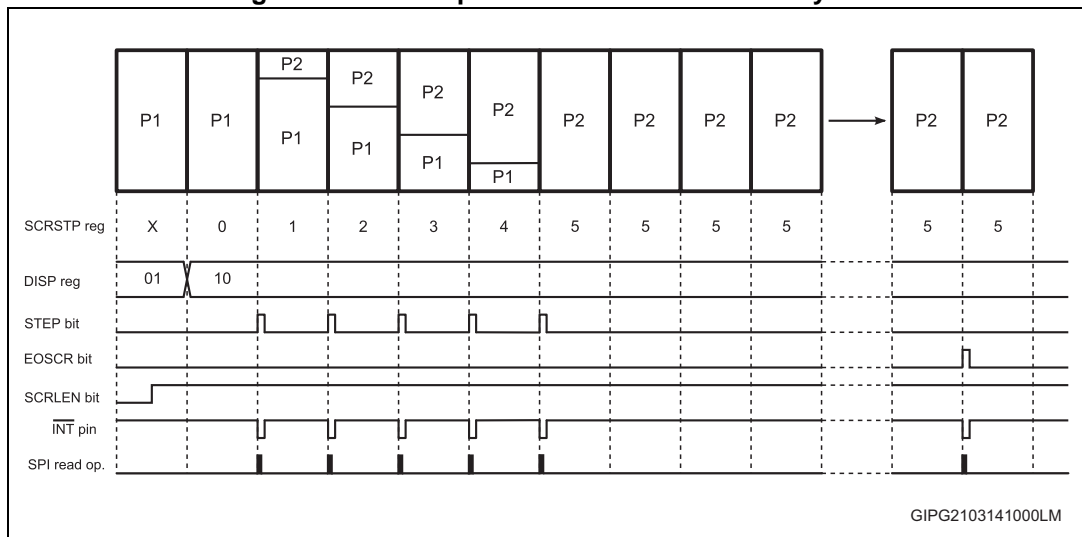


Figure 11 shows a scroll operation example when wait cycle is enabled. When P2 pattern is visible, the wait counter starts. EOSCR interrupt is generated, when the wait counter reaches the value set by scroll control register 3.

Figure 11. Scroll operation with enabled wait cycle



All three examples above show the scroll operation during the which P1 pattern is replaced by P2 pattern, but the behavior described in these examples is also valid for all other cases stated in Table 44.

4.7.4 Scroll examples

Figure 12. Examples of scroll (DISP 01→10)



Figure 13. Example of scroll when DISPSIZE = 1 (DISP 01 → 10)

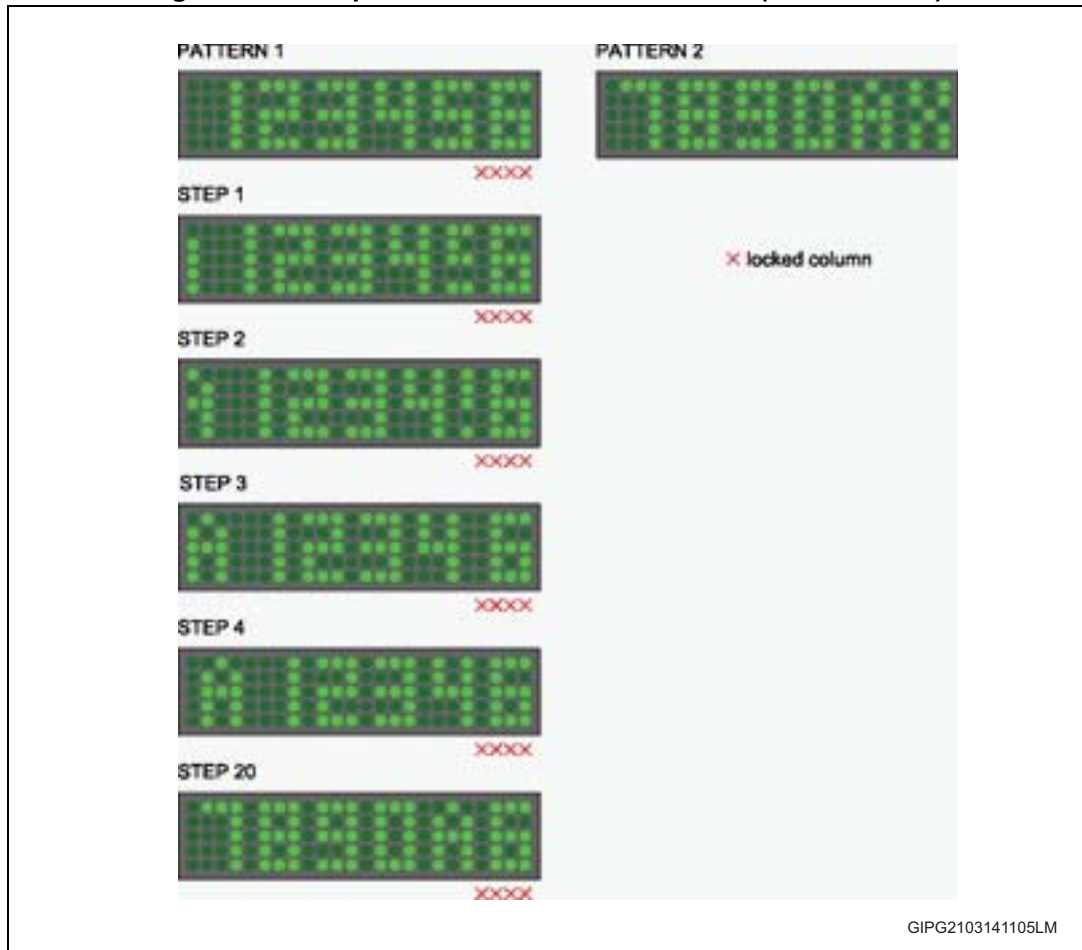
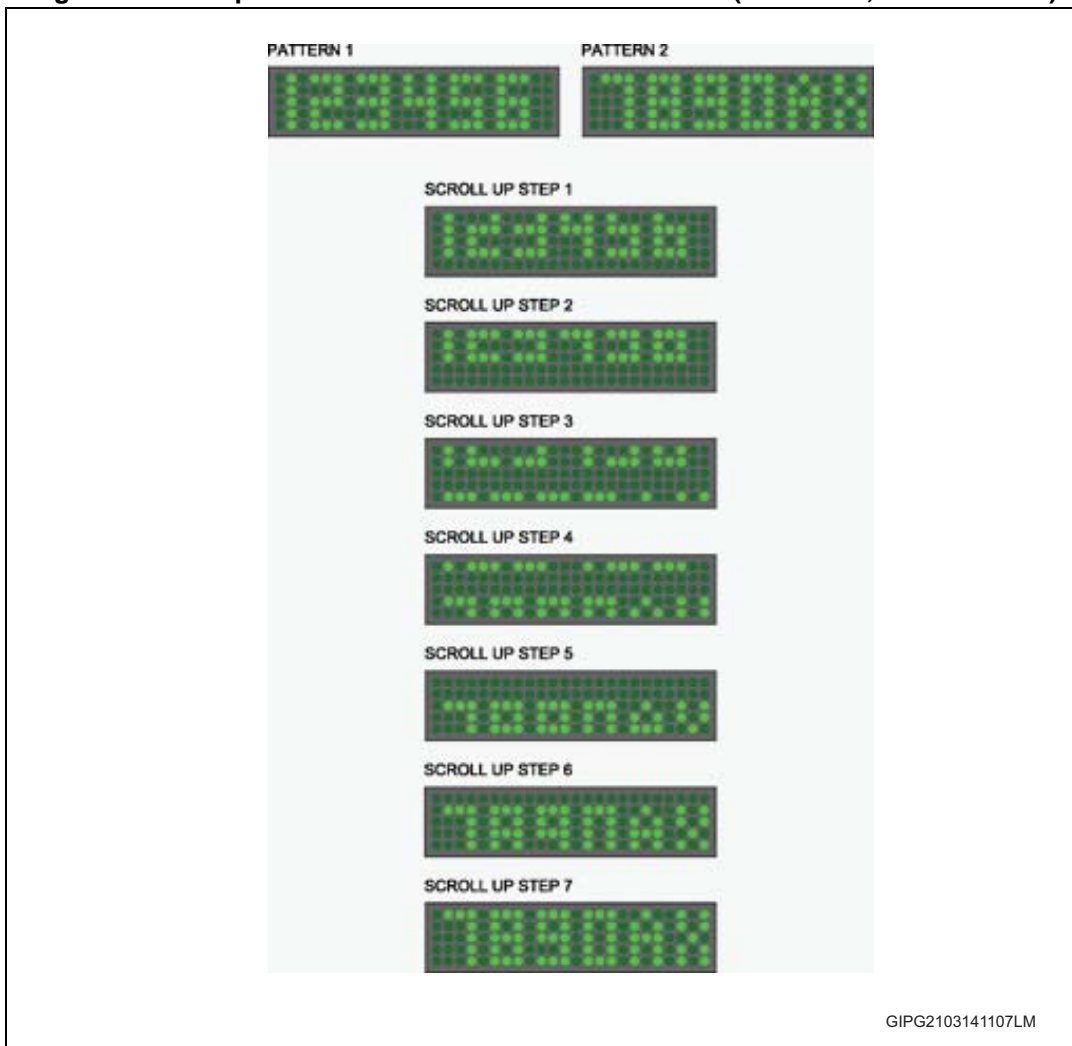


Figure 14. Example of scroll with 2 inserted blank rows (BRCEN=1, DISP 01 → 10)



4.8 Combining PWM, slope and scroll

PWM and slope can be combined without any restrictions.

Figure 15. Light output in case of enabled PWM and disabled slope

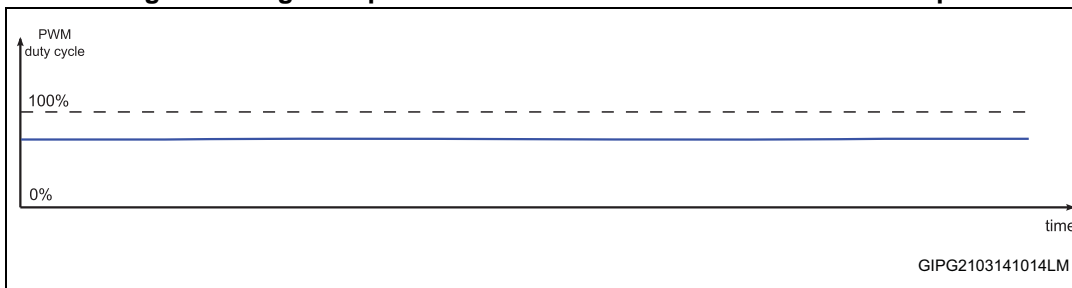


Figure 16. Light output in case of disabled PWM and enabled slope

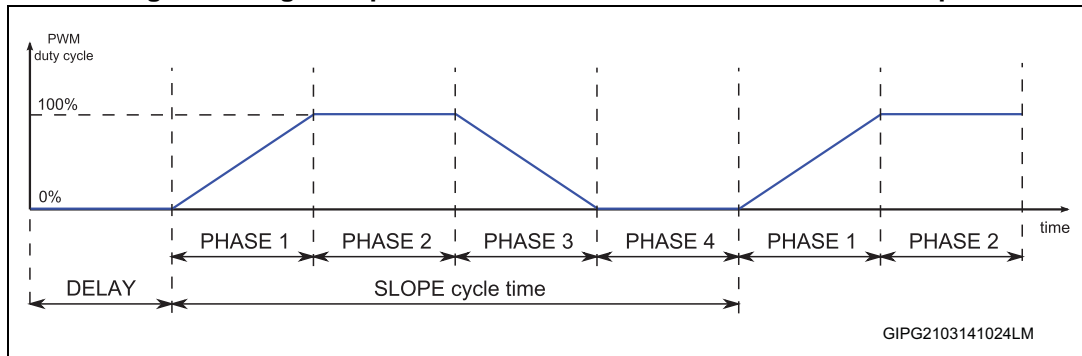


Figure 17. Light output in case of enabled PWM and enabled slope

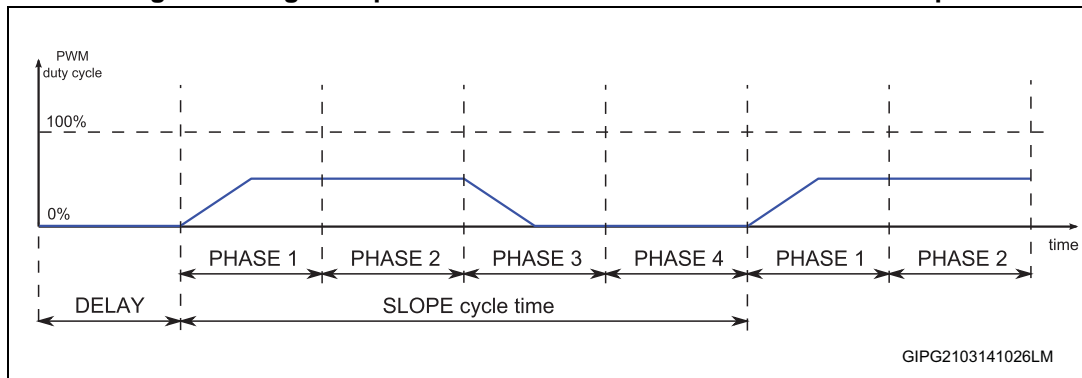
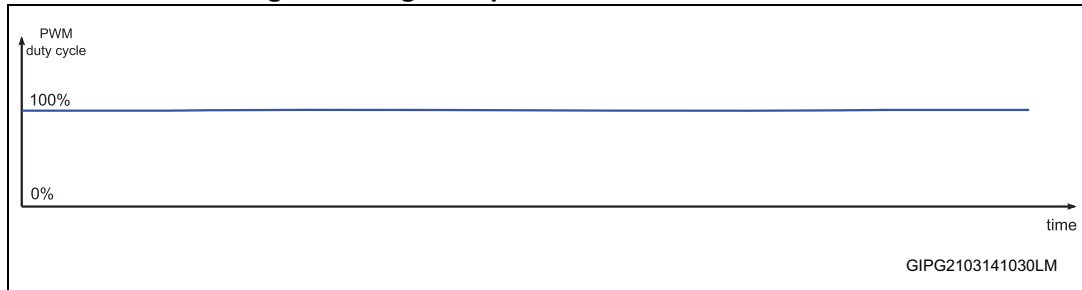


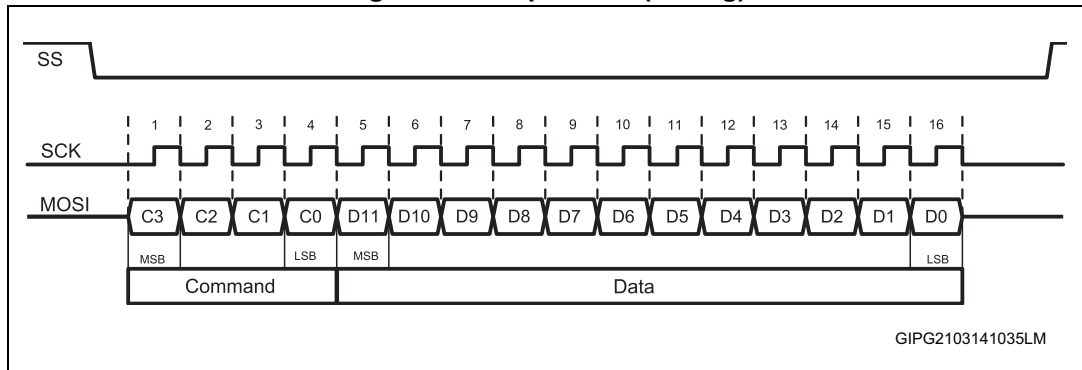
Figure 18. Light output in case of enabled scroll



4.9 SPI

The STLED524 is fully compatible with SPI protocol. All commands, addresses and input data bytes are shifted inside the device, the most significant bit first. The first serial data input (MOSI) is sampled on the first rising edge of the serial clock (SCK) after slave select (SS) goes low. [Figure 19](#) shows the writing of a single byte into the device.

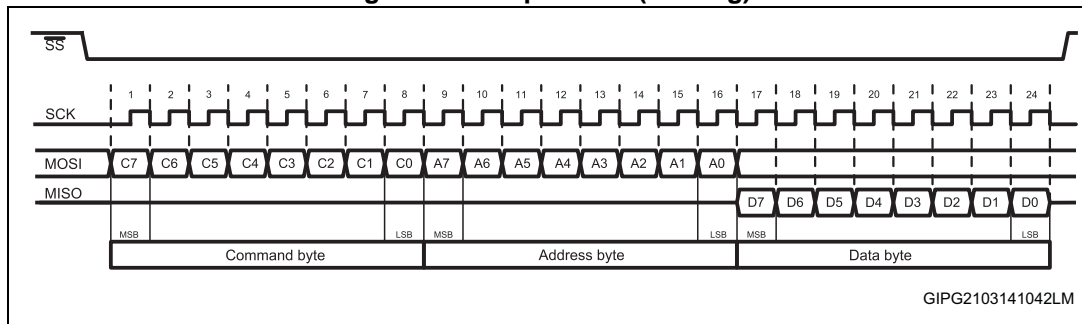
Figure 19. SPI protocol (writing)



All output data bytes are shifted out of the device, the most significant bit first. The serial data output (MISO) is latched on the first falling edge of the serial clock (SCK) after the command (such as the read from control registers) has been clocked into the device.

Figure 20 shows the reading of a single byte from the device.

Figure 20. SPI protocol (reading)



4.9.1 Command byte

Table 47. SPI commands

| Value (hex) | Value (bin) | Meaning |
|-------------|-------------|--------------------------------------|
| 00 | 00000000 | Writing to control register memory |
| 02 | 00000010 | Writing to pattern 1 memory |
| 04 | 00000100 | Writing to pattern 2 memory |
| 01 | 00000001 | Reading from control register memory |
| 03 | 00000011 | Reading from pattern 1 memory |
| 05 | 00000101 | Reading from pattern 2 memory |

4.9.2 Address byte

Table 48. SPI values

| Value (hex) | Value (bin) | Meaning |
|-------------|-------------|--------------------------------------|
| 00 | 00000000 | Writing to control register memory |
| 02 | 00000010 | Writing to pattern 1 memory |
| 04 | 00000100 | Writing to pattern 2 memory |
| 01 | 00000001 | Reading from control register memory |
| 03 | 00000011 | Reading from pattern 1 memory |
| 05 | 00000101 | Reading from pattern 2 memory |

Table 49. SPI addresses

| Address range (hex) | | Memory |
|---------------------|----|-------------------|
| from | to | |
| 00 | FF | Control registers |
| 00 | EF | Pattern 1 |
| 00 | EF | Pattern 2 |

Writing to the address out of specified ranges is ignored.

The internal address register is incremented automatically when a byte is written or read. When the address register reaches the end of the address range, it resets to 0.

4.9.3 SPI timing

Figure 21. Serial input timing

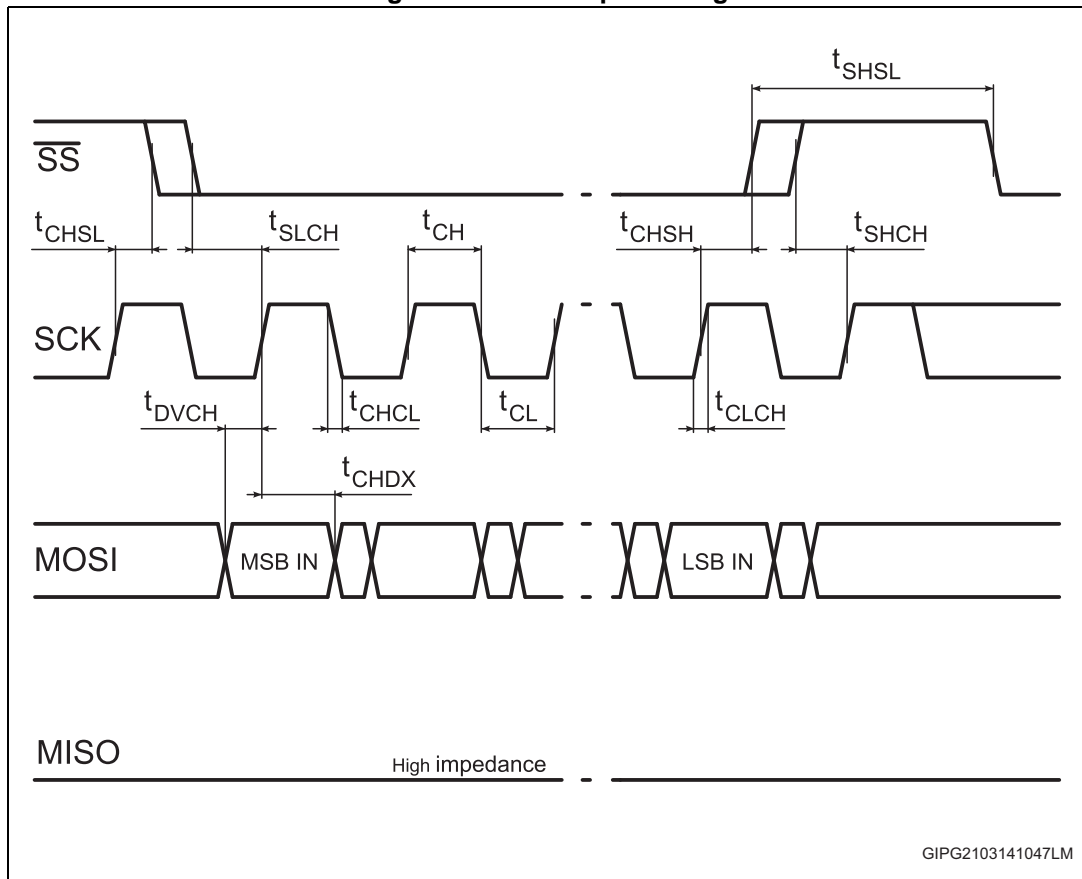
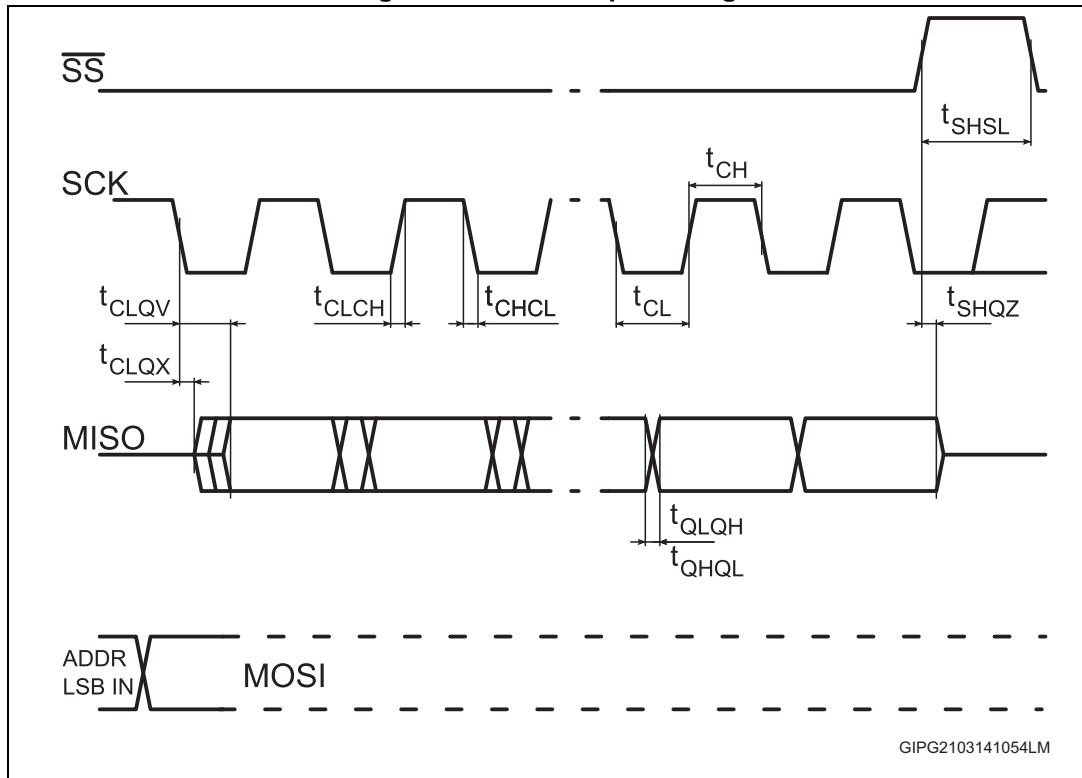


Figure 22. Serial output timing



Data are captured on SCK rising edge and are propagated to SCK falling edge.

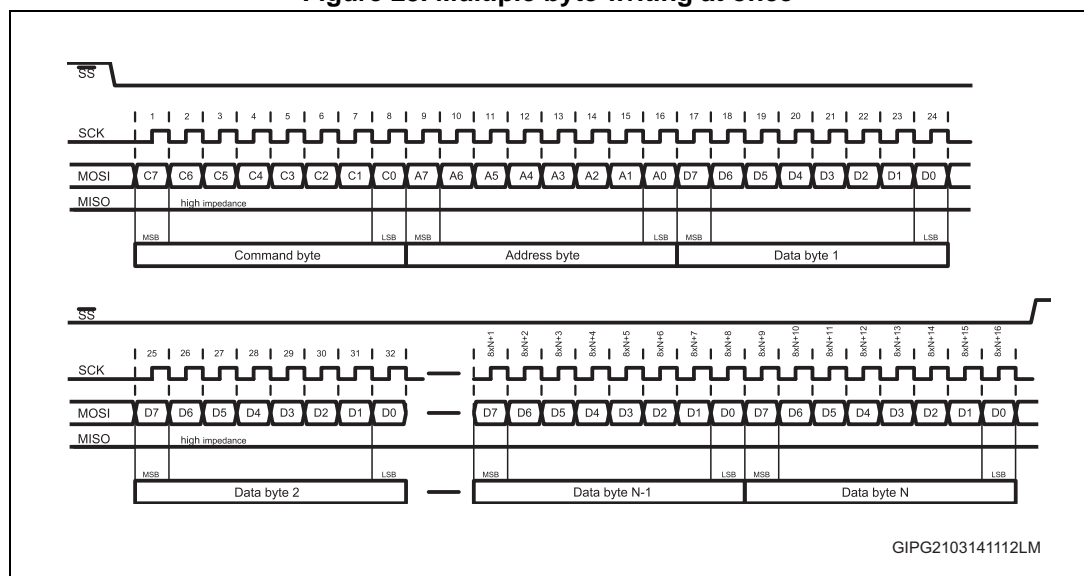
SCK is low when it is in idle mode. SPI master selects one slave at a time through 5 pF C_{max} SS signal.

Table 50. SPI timings

| Symbol | Parameter | Min. | Typ. | Max. | Unit |
|------------|---------------------------|------|------|------|------|
| f_C | Clock frequency | DC | | 20 | MHz |
| t_{SLCH} | SS active set-up time | 20 | | | ns |
| t_{SHCH} | SS not active set-up time | 10 | | | ns |
| t_{SHSL} | SS deselect time | 100 | | | ns |
| t_{CHSH} | SS active hold time | 20 | | | ns |
| t_{CHSL} | SS not active hold time | 10 | | | ns |
| t_{CH} | Clock high time | 20 | | | ns |
| t_{CL} | Clock low time | 20 | | | ns |
| t_{CLCH} | Clock rise time | | | 5 | ns |
| t_{CHCL} | Clock fall time | | | 5 | ns |
| t_{DVCH} | Data in set-up time | 4 | | | ns |
| t_{CHDX} | Data in hold time | 5 | | | ns |
| t_{SHQZ} | Output disable time | | | 20 | ns |
| t_{CLQV} | Clock low to output valid | | | 23 | ns |
| t_{CLQX} | Output hold time | 0 | | | ns |
| t_{QLQH} | Output rise time | | | 10 | ns |
| t_{QHQL} | Output fall time | | | 10 | ns |

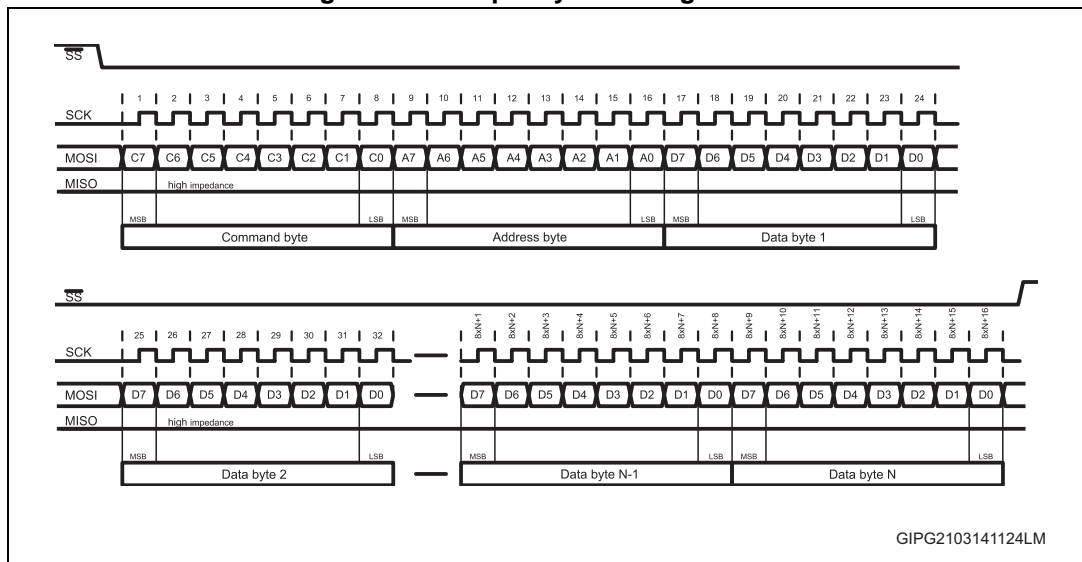
4.9.4 Writing and reading multiple bytes at once

Figure 23. Multiple byte writing at once



The STLED524 supports the writing of multiple bytes at once. When the first byte is received, the internal address counter is incremented automatically. Next byte from SPI frame is written into this new address and so on, until the nth byte is received. If the address counter reaches the end of address space, it resets to 0 automatically and the writing continues. When the reading of multiple bytes is performed, the internal address register is incremented after each byte reading automatically. If the address counter reaches the end of address space, it resets to 0 automatically and the reading continues.

Figure 24. Multiple byte reading at once



4.10 Protections and interrupts

4.10.1 Registers related to protections and interrupts

There are 3 registers related to protections and interrupts. They are: status, latch and interrupt enable registers.

Table 51. Interrupt enable register

| Interrupt enable | Bit 7 | Bit 6 | Bit 5 | Bit 4 | Bit 3 | Bit 2 | Bit 1 | Bit 0 |
|------------------|---------|---------|---------|--------|---------|--------|-------|-------|
| Add = 40h | BSTOK_M | ROWSC_M | EOSCR_M | STEP_M | SHORT_M | OPEN_M | THP_M | OVP_M |
| Default | 0 | 0 | 0 | 0 | 0 | 0 | 0 | 0 |

OVP_M = 0, the interrupt generated by overvoltage protection is disabled

OVP_M = 1, the interrupt generated by overvoltage protection is enabled

THP_M = 0, the interrupt generated by overtemperature protection is disabled

THP_M = 1, the interrupt generated by overtemperature protection is enabled

OPEN_M = 0, the interrupt generated by open R_{SET} protection is disabled

OPEN_M = 1, the interrupt generated by open R_{SET} protection is enabled

SHORT_M = 0, the interrupt generated by short R_{SET} protection is disabled

SHORT_M = 1, the interrupt generated by short R_{SET} protection is enabled

STEP_M = 0 the interrupt generated at the beginning of a scroll step is disabled

STEP_M = 1, the interrupt generated at the beginning of a scroll step is enabled

EOSCR_M = 0, the interrupt generated at the end of scroll operation is disabled

EOSCR_M = 1, the interrupt generated at the end of scroll operation is enabled

ROWSC_M = 0, the interrupt generated by row short-circuit is disabled

ROWSC_M = 1, the interrupt generated by row short-circuit is enabled

BSTOK_M = 0, the interrupt generated, when the boost output voltage reaches the target value, is disabled

BSTOK_M = 1, the interrupt generated, when the boost output voltage reaches the target value, is enabled

Table 52. Latch register (read only)

| Latch | Bit 7 | Bit 6 | Bit 5 | Bit 4 | Bit 3 | Bit 2 | Bit 1 | Bit 0 |
|-----------|-------|-------|-------|-------|-------|-------|-------|-------|
| Add = 41h | BSTOK | ROWSC | EOSCR | STEP | SHORT | OPEN | THP | OVP |
| Default | 0 | 0 | 0 | 0 | 0 | 0 | 0 | 0 |

Bits in this register are set when the corresponding interrupt occurs. These bits are latched and they can only be cleared by reading the register through SPI.

When an interrupt is disabled, the corresponding bit in the latch register is not set.

Table 53. Status register (read only)

| Status | Bit 7 | Bit 6 | Bit 5 | Bit 4 | Bit 3 | Bit 2 | Bit 1 | Bit 0 |
|-----------|-------|-------|-------|-------|-------|-------|-------|-------|
| Add = 42h | BSTOK | - | - | - | SHORT | OPEN | THP | OVP |
| Default | 0 | 0 | 0 | 0 | 0 | 0 | 0 | 0 |

Bits in the status register are set and reset according to the state of internal signals (overtemperature, overvoltage etc.). Reading the status register through SPI does not influence the state of bits.

4.10.2 Overvoltage protection

If the output voltage of boost is higher than the overvoltage protection threshold, the boost is stopped. OVP bit in the status register is set. The interrupt is generated, if it is enabled and OVP bit in the latch register is also set and remains latched, until it is read through SPI. If the output voltage of the boost goes below the overvoltage protection hysteresis, OVP bit in the status register is reset. The microcontroller decides, whether to start the boost again or not.

4.10.3 Thermal protection

There are two thermal sensors inside the chip. The former protects boost and current mirrors. The latter protects LDO. Boost thermal protection and current mirrors have TSHDN1 threshold (150 °C) and 20 °C hysteresis, while LDO thermal protection has TSHDN2 threshold (170 °C) and 20 °C hysteresis.

If the chip temperature reaches the first TSHDN1 threshold, boost and current mirrors are automatically disabled (EN bit and BSTEN bit are reset). An interrupt is generated, if it is enabled and THP in the latch register is set. If the chip temperature goes below thermal shutdown hysteresis, an interrupt is generated, THP bit in the status register is reset and THP bit in the latch register is set. Boost and current mirrors are not re-enabled automatically; the microcontroller can do it.

If the microcontroller tries to re-enable boost and current mirrors, when THP is active, boost and current mirrors stay off.

When LDO temperature reaches TSHDN2 threshold, it is turned off. If LDO supplies the digital part, the content of patterns and all settings in the control registers are lost. LDO is re-enabled automatically, as soon as its temperature goes below TSHDN2HYST overtemperature hysteresis.

4.10.4 Open ISET protection

When EN bit is set to 1, REFSEL bit is set to 0 and ISET pin is opened or R_{SET} resistor value is higher than 270 k Ω typically, then current mirrors are turned off. Boost operation is not touched. OPEN bit is set in the status register and an interrupt is generated, if it is enabled and OPEN bit in the latch register is set. EN bit is not touched, but current mirrors are disabled. In this situation the microcontroller has the possibility to set REFSEL bit to 1 in the clock register and run with the internal reference for the current mirrors.

4.10.5 Short ISET protection

When EN bit is set to 1, REFSEL bit is set to 0 and ISET pin is shorted or R_{SET} value is lower than 14 k Ω , then current mirrors are turned off. Boost operation is not touched. SHORT bit is set in the status register and an interrupt is generated, if it is enabled and SHORT bit in the latch register is set. EN bit is not touched, but current mirrors are disabled. In this situation the microcontroller has the possibility to set REFSEL bit to 1 in the clock register and run with the internal reference for the current mirrors.

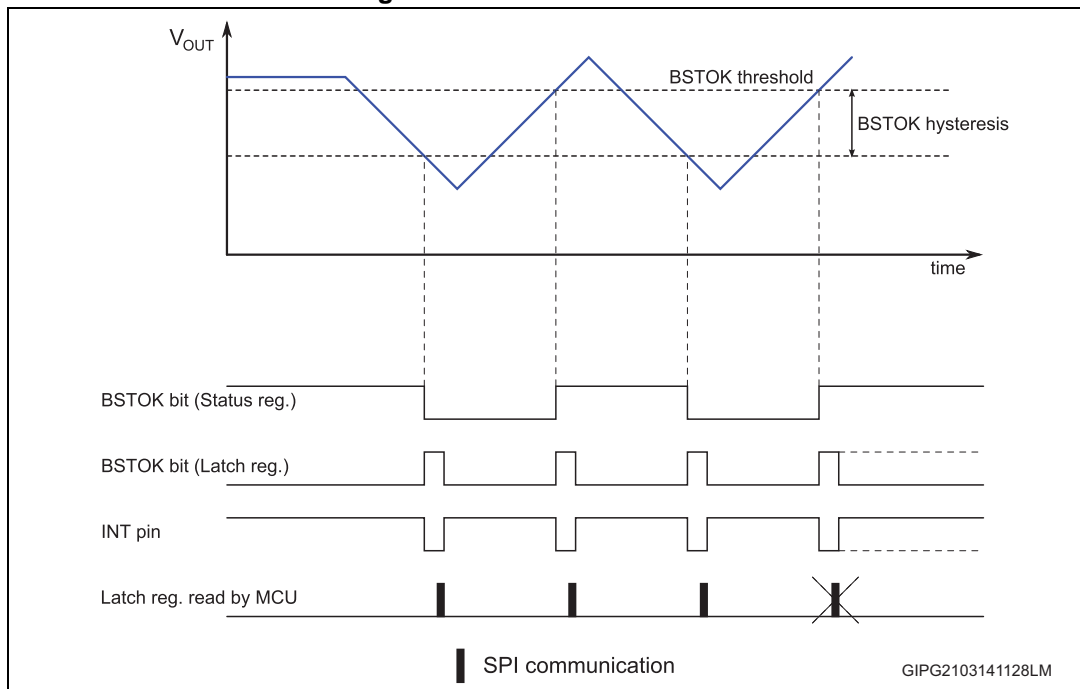
4.10.6 Row transistor protection

If any of 5-row pins is shorted to GND, current mirrors are disabled and EN bit is reset. An interrupt is generated, if it is enabled and ROWSC bit in the latch register is set.

4.10.7 Boost output voltage OK

When boost output voltage reaches the target value given by VOUT register (VOUTSET), BSTOK bit in the status register is set to 1. An interrupt is generated, if it is enabled. BSTOK bit in the latch register is set to 1. When boost output voltage falls below VOUTSET, VBSTOKHYST, BSTOK bit is reset and an interrupt is generated, if it is enabled. BSTOK bit hasn't any impact on boost or current mirrors. The microcontroller can decide whether to stop operation of the display or not, if boost output voltage is not sufficient (BSTOK = 0).

Figure 25. BSTOK bit behavior



4.10.8 EOSCR and step interrupts

Functions of these two interrupts are described in [Section 4.7.3](#).

4.11 Shutdown mode

When the device is in shutdown mode, its power consumption is minimized. It is not possible to write data to any register over SPI. RESET/PWRDN pin has to be low to keep the device in shutdown mode. LDO is always alive regardless of the level on RESET/PWRDN pin. SCK, MOSI, SS, SYNC and CLKIN logic input pins can increase power consumption, if they are left floating. These pins should be connected to either logic 0 or logic 1 in shutdown mode. Thanks to this condition, the minimum power consumption can be achieved. INT pin is pulled up typically. If this pin is not used in the application, it can be left floating in shutdown mode without any negative impact on power consumption. Do not pull this pin down in shutdown mode as it increases power consumption. MISO pin is in high Z state, when the device is in shutdown mode. So it can be left floating or it can be pulled up or down without any effect on power consumption in shutdown mode. CLKOUT pin is driven low internally in shutdown mode. So it can be left floating in shutdown mode. Do not pull this pin up in shutdown mode as it increases power consumption.

4.12 Undervoltage lockout

If the input voltage falls below VUVLOF threshold, the device enters the undervoltage lockout. Boost and drivers are turned off. LDO is not turned off. When the input voltage rises above VUVLOR, patterns have to be loaded again and the device has to be re-enabled, because it is not guaranteed that the digital section can keep data during the undervoltage lockout.



5

List of control registers

Table 54. List of control registers

| Name | Add | Bit 7 | Bit 6 | Bit 5 | Bit 4 | Bit 3 | Bit 2 | Bit 1 | Bit 0 |
|--|-----|---------|---------|---------|---------|---------|---------|---------|---------|
| Software control | 00h | SWRST | - | - | - | - | CLR2 | CLR1 | EN |
| | | 0 | 0 | 0 | 0 | 0 | 0 | 0 | 0 |
| | | ACLR | - | - | - | - | - | ACLR | ACLR |
| Display control | 01h | - | - | - | - | - | - | DISP2 | DISP1 |
| | | 0 | 0 | 0 | 0 | 0 | 0 | 0 | 0 |
| | | - | - | - | - | - | - | R/W | R/W |
| Section A: these settings should be applied with EN=0 | | | | | | | | | |
| Clock | 10h | - | - | - | REFSEL | SYNCSEL | SYNCEN | CLKIN | CLKOUT |
| | | 0 | 0 | 0 | 0 | 0 | 0 | 0 | 0 |
| | | - | - | - | R/W | R/W | R/W | R/W | R/W |
| Column control 1 | 11h | COL7EN | COL6EN | COL5EN | COL4EN | COL3EN | COL2EN | COL1EN | COL0EN |
| | | 1 | 1 | 1 | 1 | 1 | 1 | 1 | 1 |
| | | R/W | R/W | R/W | R/W | R/W | R/W | R/W | R/W |
| Column control 2 | 12h | COL15EN | COL14EN | COL13EN | COL12EN | COL11EN | COL10EN | COL9EN | COL8EN |
| | | 1 | 1 | 1 | 1 | 1 | 1 | 1 | 1 |
| | | R/W | R/W | R/W | R/W | R/W | R/W | R/W | R/W |
| Column control 3 | 13h | COL23EN | COL22EN | COL21EN | COL20EN | COL19EN | COL18EN | COL17EN | COL16EN |
| | | 1 | 1 | 1 | 1 | 1 | 1 | 1 | 1 |
| | | R/W | R/W | R/W | R/W | R/W | R/W | R/W | R/W |
| Row control | 14h | - | - | - | ROW4EN | ROW3EN | ROW2EN | ROW1EN | ROW0EN |
| | | 0 | 0 | 0 | 1 | 1 | 1 | 1 | 1 |
| | | - | - | - | R/W | R/W | R/W | R/W | R/W |



Table 54. List of control registers (continued)

| Name | Add | Bit 7 | Bit 6 | Bit 5 | Bit 4 | Bit 3 | Bit 2 | Bit 1 | Bit 0 |
|--|-----|-------------|-------|-----------|-------------|-----------|----------|---------------|----------|
| Blanking time | 15h | - | - | - | - | - | BLK[2:0] | | |
| | | 0 | 0 | 0 | 0 | 0 | 0 | 0 | 0 |
| | | - | - | - | - | - | R/W | R/W | R/W |
| Boost control | 16h | BSTEN | - | - | - | VOUT[3:0] | | | |
| | | 0 | - | - | - | 1 | 0 | 1 | 0 |
| | | R/W | - | - | - | R/W | R/W | R/W | R/W |
| Section B: | | | | | | | | | |
| Display visual control | 20h | - | - | BRCEN | WAITEN | SLPEN | SCRLEN | PWMEN | DISPSIZE |
| | | 0 | 0 | 0 | 0 | 0 | 0 | 0 | 0 |
| | | - | - | R/W | R/W | R/W | R/W | R/W | R/W |
| PWM control | 21h | PWM[7:0] | | | | | | | |
| | | 0 | 0 | 0 | 0 | 0 | 0 | 0 | 0 |
| | | R/W | R/W | R/W | R/W | R/W | R/W | R/W | R/W |
| Section C: these settings should be applied when scroll is not active (EOSCR = 1) | | | | | | | | | |
| Scroll control 1 | 30h | SCLSPD[5:0] | | | | | | SCRL_DIR[1:0] | |
| | | 0 | 0 | 0 | 0 | 0 | 0 | 0 | 0 |
| | | R/W | R/W | R/W | R/W | R/W | R/W | R/W | R/W |
| Scroll control 2 | 31h | BLNK_R[2:0] | | | BLNK_C[4:0] | | | | |
| | | 0 | 0 | 0 | 0 | 0 | 0 | 0 | 0 |
| | | W | W | W | W | W | W | W | W |
| Scroll control 3 | 32h | - | - | WAIT[2:0] | | | | | |
| | | 0 | 0 | 0 | 0 | 0 | 0 | 0 | 0 |
| | | - | - | R/W | R/W | R/W | R/W | R/W | R/W |

Table 54. List of control registers (continued)

| Name | Add | Bit 7 | Bit 6 | Bit 5 | Bit 4 | Bit 3 | Bit 2 | Bit 1 | Bit 0 |
|------------------------------|-----|----------|---------|---------|---------|---------|---------|---------|---------|
| Column lock 1 | 33h | COLCK7 | COLCK6 | COLCK5 | COLCK4 | COLCK3 | COLCK2 | COLCK1 | COLCK0 |
| | | 0 | 0 | 0 | 0 | 0 | 0 | 0 | 0 |
| | | R/W | R/W | R/W | R/W | R/W | R/W | R/W | R/W |
| Column lock 2 | 34h | COLCK15 | COLCK14 | COLCK13 | COLCK12 | COLCK11 | COLCK10 | COLCK9 | COLCK8 |
| | | 0 | 0 | 0 | 0 | 0 | 0 | 0 | 0 |
| | | - | - | R/W | R/W | R/W | R/W | R/W | R/W |
| Column lock 3 | 35h | COLCK23 | COLCK22 | COLCK21 | COLCK20 | COLCK19 | COLCK18 | COLCK17 | COLCK16 |
| | | 0 | 0 | 0 | 0 | 0 | 0 | 0 | 0 |
| | | R/W | R/W | R/W | R/W | R/W | R/W | R/W | R/W |
| Row lock | 36h | - | - | - | ROWLCK4 | ROWLCK3 | ROWLCK2 | ROWLCK1 | ROWLCK0 |
| | | 0 | 0 | 0 | 0 | 0 | 0 | 0 | 0 |
| | | - | - | - | R/W | R/W | R/W | R/W | R/W |
| Section D: interrupts | | | | | | | | | |
| Interrupt enable | 40h | BST_OK_M | ROWSC_M | EOSCR_M | STEP_M | SHORT_M | OPEN_M | THP_M | OVP_M |
| | | 0 | 0 | 0 | 0 | 0 | 0 | 0 | 0 |
| | | R/W | R/W | R/W | R/W | R/W | R/W | R/W | R/W |
| Latch | 41h | BST_OK | ROWSC | EOSCR | STEP | SHORT | OPEN | THP | OVP |
| | | 0 | 0 | 0 | 0 | 0 | 0 | 0 | 0 |
| | | RCLEAR | RCLEAR | RCLEAR | RCLEAR | RCLEAR | RCLEAR | RCLEAR | RCLEAR |
| Status | 42h | BST_OK | ROWSC | EOSCR | - | SHORT | OPEN | THP | OVP |
| | | 0 | 0 | 1 | 0 | 0 | 0 | 0 | 0 |
| | | R | R | R | - | R | R | R | R |

Table 54. List of control registers (continued)

| Name | Add | Bit 7 | Bit 6 | Bit 5 | Bit 4 | Bit 3 | Bit 2 | Bit 1 | Bit 0 |
|--------------|-----|-------|-------|-------|--------------|----------|-------|-------|-------|
| Scroll steps | 43h | - | - | | SCRSTP [5:0] | | | | |
| | | 0 | 0 | 0 | 0 | 0 | 0 | 0 | 0 |
| | | - | - | R | R | R | R | R | R |
| Version | FFh | - | - | - | - | VER[3:0] | | | |
| | | 0 | 0 | 0 | 0 | 0 | 0 | 0 | 1 |
| | | - | - | - | - | R | R | R | R |



6 Application information

6.1 Pattern examples

6.1.1 Example 1 - rectangle

Dimming of all dots in the rectangle is set to 255. Slope is set to 1 and delay is set to 0.

Figure 26. Example 1

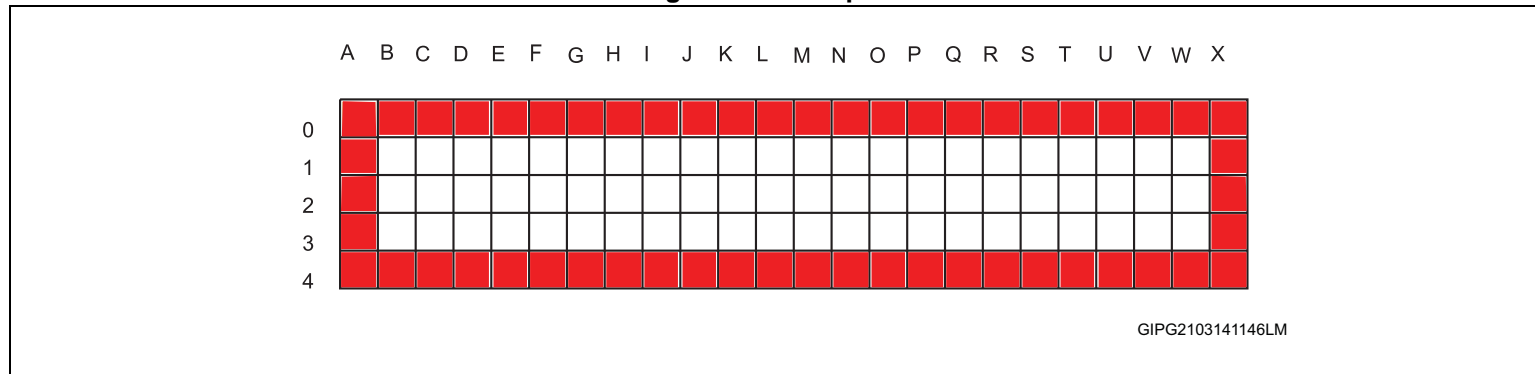




Table 55. Pattern data for example 1

| Row | 0 | | | 1 | | | 2 | | | 3 | | | 4 | | |
|------|------|-------|--------------------|------|-------|------|------|-------|------|------|-------|------|------|-------|------|
| Col. | Add | Dimm. | S&D ⁽¹⁾ | Add | Dimm. | S&D | Add | Dimm. | S&D | Add | Dimm. | S&D | Add | Dimm. | S&D |
| A | 0x00 | 0xFF | 0x04 | 0x02 | 0xFF | 0x04 | 0x04 | 0xFF | 0x04 | 0x06 | 0xFF | 0x04 | 0x08 | 0xFF | 0x04 |
| B | 0x0A | 0xFF | 0x04 | 0x0C | 0x00 | 0x00 | 0x0E | 0x00 | 0x00 | 0x10 | 0x00 | 0x00 | 0x12 | 0xFF | 0x04 |
| C | 0x14 | 0xFF | 0x04 | 0x16 | 0x00 | 0x00 | 0x18 | 0x00 | 0x00 | 0x1A | 0x00 | 0x00 | 0x1C | 0xFF | 0x04 |
| D | 0x1E | 0xFF | 0x04 | 0x20 | 0x00 | 0x00 | 0x22 | 0x00 | 0x00 | 0x24 | 0x00 | 0x00 | 0x26 | 0xFF | 0x04 |
| E | 0x28 | 0xFF | 0x04 | 0x2A | 0x00 | 0x00 | 0x2C | 0x00 | 0x00 | 0x2E | 0x00 | 0x00 | 0x30 | 0xFF | 0x04 |
| F | 0x32 | 0xFF | 0x04 | 0x34 | 0x00 | 0x00 | 0x36 | 0x00 | 0x00 | 0x38 | 0x00 | 0x00 | 0x3A | 0xFF | 0x04 |
| G | 0x3C | 0xFF | 0x04 | 0x3E | 0x00 | 0x00 | 0x40 | 0x00 | 0x00 | 0x42 | 0x00 | 0x00 | 0x44 | 0xFF | 0x04 |
| H | 0x46 | 0xFF | 0x04 | 0x48 | 0x00 | 0x00 | 0x4A | 0x00 | 0x00 | 0x4C | 0x00 | 0x00 | 0x4E | 0xFF | 0x04 |
| I | 0x50 | 0xFF | 0x04 | 0x52 | 0x00 | 0x00 | 0x54 | 0x00 | 0x00 | 0x56 | 0x00 | 0x00 | 0x58 | 0xFF | 0x04 |
| J | 0x5A | 0xFF | 0x04 | 0x5C | 0x00 | 0x00 | 0x5E | 0x00 | 0x00 | 0x60 | 0x00 | 0x00 | 0x62 | 0xFF | 0x04 |
| K | 0x64 | 0xFF | 0x04 | 0x66 | 0x00 | 0x00 | 0x68 | 0x00 | 0x00 | 0x6A | 0x00 | 0x00 | 0x6C | 0xFF | 0x04 |
| L | 0x6E | 0xFF | 0x04 | 0x70 | 0x00 | 0x00 | 0x72 | 0x00 | 0x00 | 0x74 | 0x00 | 0x00 | 0x76 | 0xFF | 0x04 |
| M | 0x78 | 0xFF | 0x04 | 0x7A | 0x00 | 0x00 | 0x7C | 0x00 | 0x00 | 0x7E | 0x00 | 0x00 | 0x80 | 0xFF | 0x04 |
| N | 0x82 | 0xFF | 0x04 | 0x84 | 0x00 | 0x00 | 0x86 | 0x00 | 0x00 | 0x88 | 0x00 | 0x00 | 0x8A | 0xFF | 0x04 |
| O | 0x8C | 0xFF | 0x04 | 0x8E | 0x00 | 0x00 | 0x90 | 0x00 | 0x00 | 0x92 | 0x00 | 0x00 | 0x94 | 0xFF | 0x04 |
| P | 0x96 | 0xFF | 0x04 | 0x98 | 0x00 | 0x00 | 0x9A | 0x00 | 0x00 | 0x9C | 0x00 | 0x00 | 0x9E | 0xFF | 0x04 |
| Q | 0xA0 | 0xFF | 0x04 | 0xA2 | 0x00 | 0x00 | 0xA4 | 0x00 | 0x00 | 0xA6 | 0x00 | 0x00 | 0xA8 | 0xFF | 0x04 |
| R | 0xAA | 0xFF | 0x04 | 0xAC | 0x00 | 0x00 | 0xAE | 0x00 | 0x00 | 0xB0 | 0x00 | 0x00 | 0xB2 | 0xFF | 0x04 |
| S | 0xB4 | 0xFF | 0x04 | 0xB6 | 0x00 | 0x00 | 0xB8 | 0x00 | 0x00 | 0xBA | 0x00 | 0x00 | 0xBC | 0xFF | 0x04 |
| T | 0xBE | 0xFF | 0x04 | 0xC0 | 0x00 | 0x00 | 0xC2 | 0x00 | 0x00 | 0xC4 | 0x00 | 0x00 | 0xC6 | 0xFF | 0x04 |
| U | 0xC8 | 0xFF | 0x04 | 0xCA | 0x00 | 0x00 | 0xCC | 0x00 | 0x00 | 0xCE | 0x00 | 0x00 | 0xD0 | 0xFF | 0x04 |
| V | 0xD2 | 0xFF | 0x04 | 0xD4 | 0x00 | 0x00 | 0xD6 | 0x00 | 0x00 | 0xD8 | 0x00 | 0x00 | 0xDA | 0xFF | 0x04 |

Table 55. Pattern data for example 1 (continued)

| Row | | 0 | | | 1 | | | 2 | | | 3 | | | 4 | | |
|------|------|-------|--------------------|------|-------|------|------|-------|------|------|-------|------|------|-------|------|--|
| Col. | Add | Dimm. | S&D ⁽¹⁾ | Add | Dimm. | S&D | Add | Dimm. | S&D | Add | Dimm. | S&D | Add | Dimm. | S&D | |
| W | 0xDC | 0xFF | 0x04 | 0xDE | 0x00 | 0x00 | 0xE0 | 0x00 | 0x00 | 0xE2 | 0x00 | 0x00 | 0xE4 | 0xFF | 0x04 | |
| X | 0xE6 | 0xFF | 0x04 | 0xE8 | 0xFF | 0x04 | 0xEA | 0xFF | 0x04 | 0xEC | 0xFF | 0x04 | 0xEE | 0xFF | 0x04 | |

1. Slope and delay, please see [Table 11](#).

6.1.2 Example 2 - dimming settings

Columns L and M are the brightest. Their dimming is set to 255. Columns J, K, N and O have dimming set to 240. Columns H, I, P and Q have dimming set to 225. Columns F, G, R and S have dimming set to 210. Columns D, E, T and U have dimming set to 195. Columns B, C, V and W have dimming set to 180. Slope and delay settings of all dots are 0.

Figure 27. Example 2

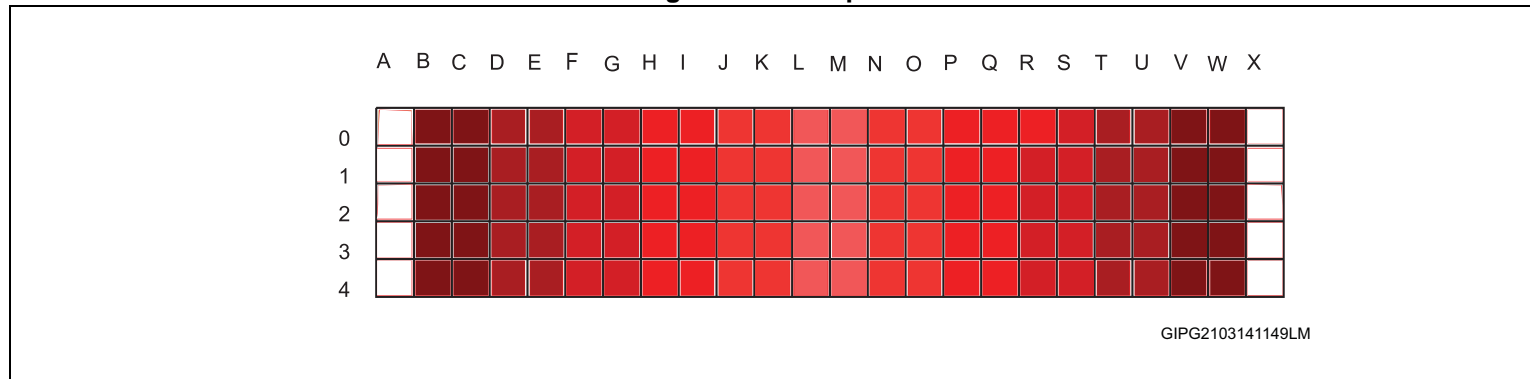




Table 56. Pattern data for example 2

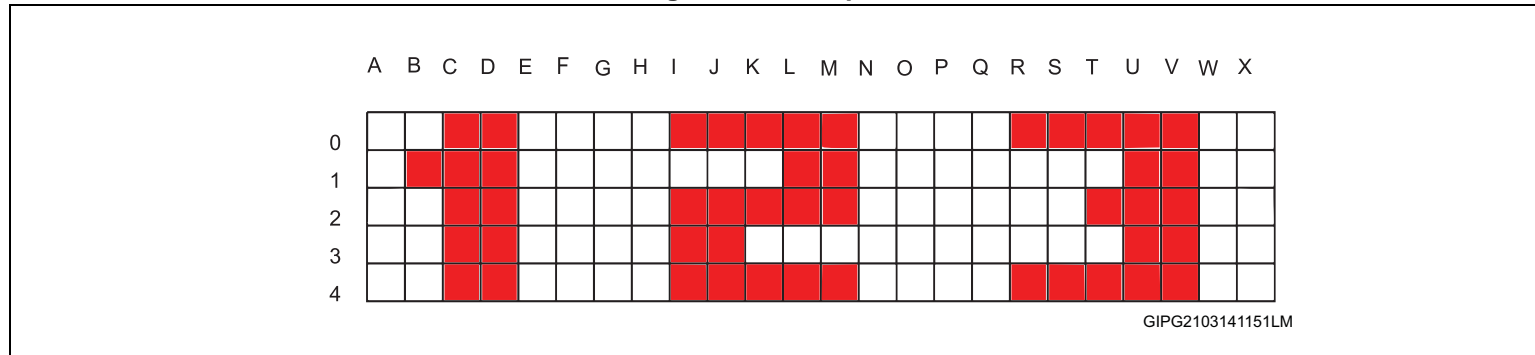
| Row | | 0 | | | 1 | | | 2 | | | 3 | | | 4 | |
|------|------|-------|------|------|-------|------|------|-------|------|------|-------|------|------|-------|------|
| Col. | Add | Dimm. | S&D | Add | Dimm. | S&D | Add | Dimm. | S&D | Add | Dimm. | S&D | Add | Dimm. | S&D |
| A | 0x00 | 0x00 | 0x00 | 0x02 | 0x00 | 0x00 | 0x04 | 0x00 | 0x00 | 0x06 | 0x00 | 0x00 | 0x08 | 0x00 | 0x00 |
| B | 0x0A | 0xAA | 0x00 | 0x0C | 0xAA | 0x00 | 0x0E | 0xAA | 0x00 | 0x10 | 0xAA | 0x00 | 0x12 | 0xAA | 0x00 |
| C | 0x14 | 0xAA | 0x00 | 0x16 | 0xAA | 0x00 | 0x18 | 0xAA | 0x00 | 0x1A | 0xAA | 0x00 | 0x1C | 0xAA | 0x00 |
| D | 0x1E | 0xC3 | 0x00 | 0x20 | 0xC3 | 0x00 | 0x22 | 0xC3 | 0x00 | 0x24 | 0xC3 | 0x00 | 0x26 | 0xC3 | 0x00 |
| E | 0x28 | 0xC3 | 0x00 | 0x2A | 0xC3 | 0x00 | 0x2C | 0xC3 | 0x00 | 0x2E | 0xC3 | 0x00 | 0x30 | 0xC3 | 0x00 |
| F | 0x32 | 0xD2 | 0x00 | 0x34 | 0xD2 | 0x00 | 0x36 | 0xD2 | 0x00 | 0x38 | 0xD2 | 0x00 | 0x3A | 0xD2 | 0x00 |
| G | 0x3C | 0xD2 | 0x00 | 0x3E | 0xD2 | 0x00 | 0x40 | 0xD2 | 0x00 | 0x42 | 0xD2 | 0x00 | 0x44 | 0xD2 | 0x00 |
| H | 0x46 | 0xE1 | 0x00 | 0x48 | 0xE1 | 0x00 | 0x4A | 0xE1 | 0x00 | 0x4C | 0xE1 | 0x00 | 0x4E | 0xE1 | 0x00 |
| I | 0x50 | 0xE1 | 0x00 | 0x52 | 0xE1 | 0x00 | 0x54 | 0xE1 | 0x00 | 0x56 | 0xE1 | 0x00 | 0x58 | 0xE1 | 0x00 |
| J | 0x5A | 0xF0 | 0x00 | 0x5C | 0xF0 | 0x00 | 0x5E | 0xF0 | 0x00 | 0x60 | 0xF0 | 0x00 | 0x62 | 0xF0 | 0x00 |
| K | 0x64 | 0xF0 | 0x00 | 0x66 | 0xF0 | 0x00 | 0x68 | 0xF0 | 0x00 | 0x6A | 0xF0 | 0x00 | 0x6C | 0xF0 | 0x00 |
| L | 0x6E | 0xFF | 0x00 | 0x70 | 0xFF | 0x00 | 0x72 | 0xFF | 0x00 | 0x74 | 0xFF | 0x00 | 0x76 | 0xFF | 0x00 |
| M | 0x78 | 0xFF | 0x00 | 0x7A | 0xFF | 0x00 | 0x7C | 0xFF | 0x00 | 0x7E | 0xFF | 0x00 | 0x80 | 0xFF | 0x00 |
| N | 0x82 | 0xF0 | 0x00 | 0x84 | 0xF0 | 0x00 | 0x86 | 0xF0 | 0x00 | 0x88 | 0xF0 | 0x00 | 0x8A | 0xF0 | 0x00 |
| O | 0x8C | 0xF0 | 0x00 | 0x8E | 0xF0 | 0x00 | 0x90 | 0xF0 | 0x00 | 0x92 | 0xF0 | 0x00 | 0x94 | 0xF0 | 0x00 |
| P | 0x96 | 0xE1 | 0x00 | 0x98 | 0xE1 | 0x00 | 0x9A | 0xE1 | 0x00 | 0x9C | 0xE1 | 0x00 | 0x9E | 0xE1 | 0x00 |
| Q | 0xA0 | 0xE1 | 0x00 | 0xA2 | 0xE1 | 0x00 | 0xA4 | 0xE1 | 0x00 | 0xA6 | 0xE1 | 0x00 | 0xA8 | 0xE1 | 0x00 |
| R | 0xAA | 0xD2 | 0x00 | 0xAC | 0xD2 | 0x00 | 0xAE | 0xD2 | 0x00 | 0xB0 | 0xD2 | 0x00 | 0xB2 | 0xD2 | 0x00 |
| S | 0xB4 | 0xD2 | 0x00 | 0xB6 | 0xD2 | 0x00 | 0xB8 | 0xD2 | 0x00 | 0xBA | 0xD2 | 0x00 | 0xBC | 0xD2 | 0x00 |
| T | 0xBE | 0xC3 | 0x00 | 0xC0 | 0xC3 | 0x00 | 0xC2 | 0xC3 | 0x00 | 0xC4 | 0xC3 | 0x00 | 0xC6 | 0xC3 | 0x00 |
| U | 0xC8 | 0xC3 | 0x00 | 0xCA | 0xC3 | 0x00 | 0xCC | 0xC3 | 0x00 | 0xCE | 0xC3 | 0x00 | 0xD0 | 0xC3 | 0x00 |
| V | 0xD2 | 0xAA | 0x00 | 0xD4 | 0xAA | 0x00 | 0xD6 | 0xAA | 0x00 | 0xD8 | 0xAA | 0x00 | 0xDA | 0xAA | 0x00 |

Table 56. Pattern data for example 2 (continued)

| Row | | 0 | | | 1 | | | 2 | | | 3 | | | 4 | | |
|------|------|-------|------|------|-------|------|------|-------|------|------|-------|------|------|-------|------|--|
| Col. | Add | Dimm. | S&D | Add | Dimm. | S&D | Add | Dimm. | S&D | Add | Dimm. | S&D | Add | Dimm. | S&D | |
| W | 0xDC | 0xAA | 0x00 | 0xDE | 0xAA | 0x00 | 0xE0 | 0xAA | 0x00 | 0xE2 | 0xAA | 0x00 | 0xE4 | 0xAA | 0x00 | |
| X | 0xE6 | 0x00 | 0x00 | 0xE8 | 0x00 | 0x00 | 0xEA | 0x00 | 0x00 | 0xEC | 0x00 | 0x00 | 0xEE | 0x00 | 0x00 | |

6.1.3 Example 3 - slope settings

Dots, creating number 1, have dimming set to 255, slope to 1 and delay to 0. Dots, creating number 2, have dimming set to 255, slope to 2 and delay to 0. Dots, creating number 3, have dimming set to 255, slope to 3 and delay to 0. When this pattern is displayed with SLPEN=1, number 1 brightness ramps up/down at the furthest speed, number 2 at medium speed and number 3 at the slowest speed.

Figure 28. Example 3

Table 57. Pattern data for example 3

| Row | | 0 | | | 1 | | | 2 | | | 3 | | | 4 | | |
|------|------|-------|------|------|-------|------|------|-------|------|------|-------|------|------|-------|------|--|
| Col. | Add | Dimm. | S&D | Add | Dimm. | S&D | Add | Dimm. | S&D | Add | Dimm. | S&D | Add | Dimm. | S&D | |
| A | 0x00 | 0x00 | 0x00 | 0x02 | 0x00 | 0x00 | 0x04 | 0x00 | 0x00 | 0x06 | 0x00 | 0x00 | 0x08 | 0x00 | 0x00 | |
| B | 0x0A | 0x00 | 0x00 | 0x0C | 0xFF | 0x04 | 0x0E | 0x00 | 0x00 | 0x10 | 0x00 | 0x00 | 0x12 | 0x00 | 0x00 | |
| C | 0x14 | 0xFF | 0x04 | 0x16 | 0xFF | 0x04 | 0x18 | 0xFF | 0x04 | 0x1A | 0xFF | 0x04 | 0x1C | 0xFF | 0x04 | |



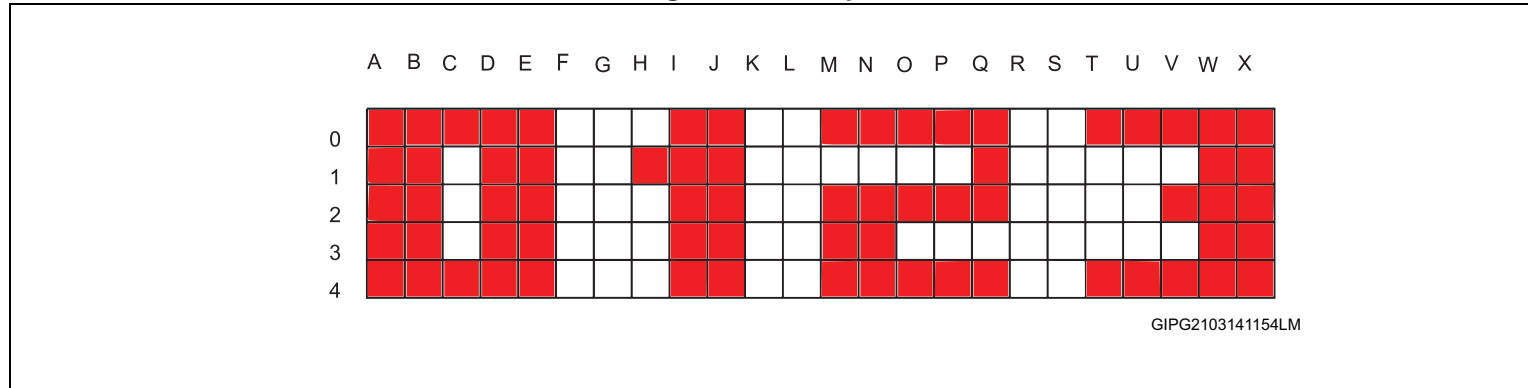
Table 57. Pattern data for example 3 (continued)

| Row | 0 | | | 1 | | | 2 | | | 3 | | | 4 | | |
|------|------|-------|------|------|-------|------|------|-------|------|------|-------|------|------|-------|------|
| Col. | Add | Dimm. | S&D | Add | Dimm. | S&D | Add | Dimm. | S&D | Add | Dimm. | S&D | Add | Dimm. | S&D |
| D | 0x1E | 0xFF | 0x04 | 0x20 | 0xFF | 0x04 | 0x22 | 0xFF | 0x04 | 0x24 | 0xFF | 0x04 | 0x26 | 0xFF | 0x04 |
| E | 0x28 | 0x00 | 0x00 | 0x2A | 0x00 | 0x00 | 0x2C | 0x00 | 0x00 | 0x2E | 0x00 | 0x00 | 0x30 | 0x00 | 0x00 |
| F | 0x32 | 0x00 | 0x00 | 0x34 | 0x00 | 0x00 | 0x36 | 0x00 | 0x00 | 0x38 | 0x00 | 0x00 | 0x3A | 0x00 | 0x00 |
| G | 0x3C | 0x00 | 0x00 | 0x3E | 0x00 | 0x00 | 0x40 | 0x00 | 0x00 | 0x42 | 0x00 | 0x00 | 0x44 | 0x00 | 0x00 |
| H | 0x46 | 0x00 | 0x00 | 0x48 | 0x00 | 0x00 | 0x4A | 0x00 | 0x00 | 0x4C | 0x00 | 0x00 | 0x4E | 0x00 | 0x00 |
| I | 0x50 | 0xFF | 0x08 | 0x52 | 0x00 | 0x00 | 0x54 | 0xFF | 0x08 | 0x56 | 0xFF | 0x08 | 0x58 | 0xFF | 0x08 |
| J | 0x5A | 0xFF | 0x08 | 0x5C | 0x00 | 0x00 | 0x5E | 0xFF | 0x08 | 0x60 | 0xFF | 0x08 | 0x62 | 0xFF | 0x08 |
| K | 0x64 | 0xFF | 0x08 | 0x66 | 0x00 | 0x00 | 0x68 | 0xFF | 0x08 | 0x6A | 0x00 | 0x00 | 0x6C | 0xFF | 0x08 |
| L | 0x6E | 0xFF | 0x08 | 0x70 | 0xFF | 0x08 | 0x72 | 0xFF | 0x08 | 0x74 | 0x00 | 0x00 | 0x76 | 0xFF | 0x08 |
| M | 0x78 | 0xFF | 0x08 | 0x7A | 0xFF | 0x08 | 0x7C | 0xFF | 0x08 | 0x7E | 0x00 | 0x00 | 0x80 | 0xFF | 0x08 |
| N | 0x82 | 0x00 | 0x00 | 0x84 | 0x00 | 0x00 | 0x86 | 0x00 | 0x00 | 0x88 | 0x00 | 0x00 | 0x8A | 0x00 | 0x00 |
| O | 0x8C | 0x00 | 0x00 | 0x8E | 0x00 | 0x00 | 0x90 | 0x00 | 0x00 | 0x92 | 0x00 | 0x00 | 0x94 | 0x00 | 0x00 |
| P | 0x96 | 0x00 | 0x00 | 0x98 | 0x00 | 0x00 | 0x9A | 0x00 | 0x00 | 0x9C | 0x00 | 0x00 | 0x9E | 0x00 | 0x00 |
| Q | 0xA0 | 0x00 | 0x00 | 0xA2 | 0x00 | 0x00 | 0xA4 | 0x00 | 0x00 | 0xA6 | 0x00 | 0x00 | 0xA8 | 0x00 | 0x00 |
| R | 0xAA | 0xFF | 0x0C | 0xAC | 0x00 | 0x00 | 0xAE | 0x00 | 0x00 | 0xB0 | 0x00 | 0x00 | 0xB2 | 0xFF | 0x0C |
| S | 0xB4 | 0xFF | 0x0C | 0xB6 | 0x00 | 0x00 | 0xB8 | 0x00 | 0x00 | 0xBA | 0x00 | 0x00 | 0xBC | 0xFF | 0x0C |
| T | 0xBE | 0xFF | 0x0C | 0xC0 | 0x00 | 0x00 | 0xC2 | 0xFF | 0x0C | 0xC4 | 0x00 | 0x00 | 0xC6 | 0xFF | 0x0C |
| U | 0xC8 | 0xFF | 0x0C | 0xCA | 0xFF | 0x0C | 0xCC | 0xFF | 0x0C | 0xCE | 0xFF | 0x0C | 0xD0 | 0xFF | 0x0C |
| V | 0xD2 | 0xFF | 0x0C | 0xD4 | 0xFF | 0x0C | 0xD6 | 0xFF | 0x0C | 0xD8 | 0xFF | 0x0C | 0xDA | 0xFF | 0x0C |
| W | 0xDC | 0x00 | 0x00 | 0xDE | 0x00 | 0x00 | 0xE0 | 0x00 | 0x00 | 0xE2 | 0x00 | 0x00 | 0xE4 | 0x00 | 0x00 |
| X | 0xE6 | 0x00 | 0x00 | 0xE8 | 0x00 | 0x00 | 0xEA | 0x00 | 0x00 | 0xEC | 0x00 | 0x00 | 0xEE | 0x00 | 0x00 |

6.1.4 Example 4 - delay settings

Dots, creating number 0, have dimming set to 255, slope to 1 and delay to 0. Dots, creating number 2, have dimming set to 255, slope to 1 and delay to 1. Dots, creating number 2, have dimming set to 255, slope to 1 and delay to 2. Dots, creating number 3, have dimming set to 255, slope to 1 and delay to 3. When this pattern is displayed with SLPEN=1, brightness of all numbers ramps up/down at the same speed. Ramping of number 1 is delayed by 1 phase compared to number 0. Ramping of number 2 is delayed by 2 phases compared to number 0. Ramping of number 3 is delayed by 3 phases compared to number 0.

Figure 29. Example 4



GIPG2103141154LM

Table 58. Pattern data for example 4

| Row | 0 | | | 1 | | | 2 | | | 3 | | | 4 | | |
|------|------|-------|------|------|-------|------|------|-------|------|------|-------|------|------|-------|------|
| Col. | Add | Dimm. | S&D | Add | Dimm. | S&D | Add | Dimm. | S&D | Add | Dimm. | S&D | Add | Dimm. | S&D |
| A | 0x00 | 0x00 | 0x00 | 0x02 | 0x00 | 0x00 | 0x04 | 0x00 | 0x00 | 0x06 | 0x00 | 0x00 | 0x08 | 0x00 | 0x00 |
| B | 0x0A | 0x00 | 0x00 | 0x0C | 0xFF | 0x04 | 0x0E | 0x00 | 0x00 | 0x10 | 0x00 | 0x00 | 0x12 | 0x00 | 0x00 |
| C | 0x14 | 0xFF | 0x04 | 0x16 | 0xFF | 0x04 | 0x18 | 0xFF | 0x04 | 0x1A | 0xFF | 0x04 | 0x1C | 0xFF | 0x04 |
| D | 0x1E | 0xFF | 0x04 | 0x20 | 0xFF | 0x04 | 0x22 | 0xFF | 0x04 | 0x24 | 0xFF | 0x04 | 0x26 | 0xFF | 0x04 |
| E | 0x28 | 0x00 | 0x00 | 0x2A | 0x00 | 0x00 | 0x2C | 0x00 | 0x00 | 0x2E | 0x00 | 0x00 | 0x30 | 0x00 | 0x00 |
| F | 0x32 | 0x00 | 0x00 | 0x34 | 0x00 | 0x00 | 0x36 | 0x00 | 0x00 | 0x38 | 0x00 | 0x00 | 0x3A | 0x00 | 0x00 |
| G | 0x3C | 0x00 | 0x00 | 0x3E | 0x00 | 0x00 | 0x40 | 0x00 | 0x00 | 0x42 | 0x00 | 0x00 | 0x44 | 0x00 | 0x00 |



Table 58. Pattern data for example 4 (continued)

| Row | 0 | | | 1 | | | 2 | | | 3 | | | 4 | | |
|-----|------|------|-------|------|------|-------|------|------|-------|------|------|-------|------|------|-------|
| | Col. | Add | Dimm. | S&D | Add | Dimm. | S&D | Add | Dimm. | S&D | Add | Dimm. | S&D | Add | Dimm. |
| H | 0x46 | 0x00 | 0x00 | 0x48 | 0x00 | 0x00 | 0x4A | 0x00 | 0x00 | 0x4C | 0x00 | 0x00 | 0x4E | 0x00 | 0x00 |
| I | 0x50 | 0xFF | 0x08 | 0x52 | 0x00 | 0x00 | 0x54 | 0xFF | 0x08 | 0x56 | 0xFF | 0x08 | 0x58 | 0xFF | 0x08 |
| J | 0x5A | 0xFF | 0x08 | 0x5C | 0x00 | 0x00 | 0x5E | 0xFF | 0x08 | 0x60 | 0xFF | 0x08 | 0x62 | 0xFF | 0x08 |
| K | 0x64 | 0xFF | 0x08 | 0x66 | 0x00 | 0x00 | 0x68 | 0xFF | 0x08 | 0x6A | 0x00 | 0x00 | 0x6C | 0xFF | 0x08 |
| L | 0x6E | 0xFF | 0x08 | 0x70 | 0xFF | 0x08 | 0x72 | 0xFF | 0x08 | 0x74 | 0x00 | 0x00 | 0x76 | 0xFF | 0x08 |
| M | 0x78 | 0xFF | 0x08 | 0x7A | 0xFF | 0x08 | 0x7C | 0xFF | 0x08 | 0x7E | 0x00 | 0x00 | 0x80 | 0xFF | 0x08 |
| N | 0x82 | 0x00 | 0x00 | 0x84 | 0x00 | 0x00 | 0x86 | 0x00 | 0x00 | 0x88 | 0x00 | 0x00 | 0x8A | 0x00 | 0x00 |
| O | 0x8C | 0x00 | 0x00 | 0x8E | 0x00 | 0x00 | 0x90 | 0x00 | 0x00 | 0x92 | 0x00 | 0x00 | 0x94 | 0x00 | 0x00 |
| P | 0x96 | 0x00 | 0x00 | 0x98 | 0x00 | 0x00 | 0x9A | 0x00 | 0x00 | 0x9C | 0x00 | 0x00 | 0x9E | 0x00 | 0x00 |
| Q | 0xA0 | 0x00 | 0x00 | 0xA2 | 0x00 | 0x00 | 0xA4 | 0x00 | 0x00 | 0xA6 | 0x00 | 0x00 | 0xA8 | 0x00 | 0x00 |
| R | 0xAA | 0xFF | 0x0C | 0xAC | 0x00 | 0x00 | 0xAE | 0x00 | 0x00 | 0xB0 | 0x00 | 0x00 | 0xB2 | 0xFF | 0x0C |
| S | 0xB4 | 0xFF | 0x0C | 0xB6 | 0x00 | 0x00 | 0xB8 | 0x00 | 0x00 | 0xBA | 0x00 | 0x00 | 0xBC | 0xFF | 0x0C |
| T | 0xBE | 0xFF | 0x0C | 0xC0 | 0x00 | 0x00 | 0xC2 | 0xFF | 0x0C | 0xC4 | 0x00 | 0x00 | 0xC6 | 0xFF | 0x0C |
| U | 0xC8 | 0xFF | 0x0C | 0xCA | 0xFF | 0x0C | 0xCC | 0xFF | 0x0C | 0xCE | 0xFF | 0x0C | 0xD0 | 0xFF | 0x0C |
| V | 0xD2 | 0xFF | 0x0C | 0xD4 | 0xFF | 0x0C | 0xD6 | 0xFF | 0x0C | 0xD8 | 0xFF | 0x0C | 0xDA | 0xFF | 0x0C |
| W | 0xDC | 0x00 | 0x00 | 0xDE | 0x00 | 0x00 | 0xE0 | 0x00 | 0x00 | 0xE2 | 0x00 | 0x00 | 0xE4 | 0x00 | 0x00 |
| X | 0xE6 | 0x00 | 0x00 | 0xE8 | 0x00 | 0x00 | 0xEA | 0x00 | 0x00 | 0xEC | 0x00 | 0x00 | 0xEE | 0x00 | 0x00 |

6.1.5 Example 5 - Writing pattern data into pattern 1 memory

If pattern from example 3 is written to pattern 1 memory, the following data have to be sent through the SPI.

Table 59. SPI data for writing pattern from example 3 to pattern 1 memory

| Byte index ⁽¹⁾ | 1 | 2 | 3 | 4 | 5 | 6 | 7 | 8 | 9 | 10 | 11 | 12 | 13 | 14 | 15 | 16 |
|---------------------------|---------------------|---------------------|------|------|------|------|------|------|------|------|------|------|------|------|------|------|
| Data ⁽¹⁾ | 0x02 ⁽²⁾ | 0x00 ⁽³⁾ | 0x00 | 0x00 | 0x00 | 0x00 | 0x00 | 0x00 | 0x00 | 0x00 | 0x00 | 0x00 | 0x00 | 0x00 | 0xFF | 0x04 |
| Byte index | 17 | 18 | 19 | 20 | 21 | 22 | 23 | 24 | 25 | 26 | 27 | 28 | 29 | 30 | 31 | 32 |
| Data | 0x00 | 0x00 | 0x00 | 0x00 | 0x00 | 0x00 | 0xFF | 0x04 | 0xFF | 0x04 | 0xFF | 0x04 | 0xFF | 0x04 | 0xFF | 0x04 |
| Byte index | 33 | 34 | 35 | 36 | 37 | 38 | 39 | 40 | 41 | 42 | 43 | 44 | 45 | 46 | 47 | 48 |
| Data | 0xFF | 0x04 | 0xFF | 0x04 | 0xFF | 0x04 | 0xFF | 0x04 | 0xFF | 0x04 | 0x00 | 0x00 | 0x00 | 0x00 | 0x00 | 0x00 |
| Byte index | 49 | 50 | 51 | 52 | 53 | 54 | 55 | 56 | 57 | 58 | 59 | 60 | 61 | 62 | 63 | 64 |
| Data | 0x00 | 0x00 | 0x00 | 0x00 | 0x00 | 0x00 | 0x00 | 0x00 | 0x00 | 0x00 | 0x00 | 0x00 | 0x00 | 0x00 | 0x00 | 0x00 |
| Byte index | 65 | 66 | 67 | 68 | 69 | 70 | 71 | 72 | 73 | 74 | 75 | 76 | 77 | 78 | 79 | 80 |
| Data | 0x00 | 0x00 | 0x00 | 0x00 | 0x00 | 0x00 | 0x00 | 0x00 | 0x00 | 0x00 | 0x00 | 0x00 | 0x00 | 0x00 | 0x00 | 0x00 |
| Byte index | 81 | 82 | 83 | 84 | 85 | 86 | 87 | 88 | 89 | 90 | 91 | 92 | 93 | 94 | 95 | 96 |
| Data | 0x00 | 0x00 | 0xFF | 0x08 | 0x00 | 0x00 | 0xFF | 0x08 | 0xFF | 0x08 | 0xFF | 0x08 | 0xFF | 0x08 | 0x00 | 0x00 |
| Byte index | 97 | 98 | 99 | 100 | 101 | 102 | 103 | 104 | 105 | 106 | 107 | 108 | 109 | 110 | 111 | 112 |
| Data | 0xFF | 0x08 | 0xFF | 0x08 | 0xFF | 0x08 | 0xFF | 0x08 | 0x00 | 0x00 | 0xFF | 0x08 | 0x00 | 0x00 | 0xFF | 0x08 |
| Byte index | 113 | 114 | 115 | 116 | 117 | 118 | 119 | 120 | 121 | 122 | 123 | 124 | 125 | 126 | 127 | 128 |
| Data | 0xFF | 0x08 | 0xFF | 0x08 | 0xFF | 0x08 | 0x00 | 0x00 | 0xFF | 0x08 | 0xFF | 0x08 | 0xFF | 0x08 | 0xFF | 0x08 |
| Byte index | 129 | 130 | 131 | 132 | 133 | 134 | 135 | 136 | 137 | 138 | 139 | 140 | 141 | 142 | 143 | 144 |
| Data | 0x00 | 0x00 | 0xFF | 0x08 | 0x00 | 0x00 | 0x00 | 0x00 | 0x00 | 0x00 | 0x00 | 0x00 | 0x00 | 0x00 | 0x00 | 0x00 |
| Byte index | 145 | 146 | 147 | 148 | 149 | 150 | 151 | 152 | 153 | 154 | 155 | 156 | 157 | 158 | 159 | 160 |
| Data | 0x00 | 0x00 | 0x00 | 0x00 | 0x00 | 0x00 | 0x00 | 0x00 | 0x00 | 0x00 | 0x00 | 0x00 | 0x00 | 0x00 | 0x00 | 0x00 |
| Byte index | 161 | 162 | 163 | 164 | 165 | 166 | 167 | 168 | 169 | 170 | 171 | 172 | 173 | 174 | 175 | 176 |
| Data | 0x00 | 0x00 | 0x00 | 0x00 | 0x00 | 0x00 | 0x00 | 0x00 | 0x00 | 0x00 | 0x00 | 0x00 | 0xFF | 0x0C | 0x00 | 0x00 |
| Byte index | 177 | 178 | 179 | 180 | 181 | 182 | 183 | 184 | 185 | 186 | 187 | 188 | 189 | 190 | 191 | 192 |
| Data | 0x00 | 0x00 | 0x00 | 0x00 | 0xFF | 0x0C | 0xFF | 0x0C | 0x00 | 0x00 | 0x00 | 0x00 | 0x00 | 0x00 | 0xFF | 0x0C |



Table 59. SPI data for writing pattern from example 3 to pattern 1 memory (continued)

| Byte index ⁽¹⁾ | 1 | 2 | 3 | 4 | 5 | 6 | 7 | 8 | 9 | 10 | 11 | 12 | 13 | 14 | 15 | 16 |
|---------------------------|---------------------|---------------------|------|------|------|------|------|------|------|------|------|------|------|------|------|------|
| Data ⁽¹⁾ | 0x02 ⁽²⁾ | 0x00 ⁽³⁾ | 0x00 | 0x00 | 0x00 | 0x00 | 0x00 | 0x00 | 0x00 | 0x00 | 0x00 | 0x00 | 0x00 | 0x00 | 0xFF | 0x04 |
| Byte index | 193 | 194 | 195 | 196 | 197 | 198 | 199 | 200 | 201 | 202 | 203 | 204 | 205 | 206 | 207 | 208 |
| Data | 0xFF | 0x0C | 0x00 | 0x00 | 0xFF | 0x0C | 0x00 | 0x00 | 0xFF | 0x0C | 0xFF | 0x0C | 0xFF | 0x0C | 0xFF | 0x0C |
| Byte index | 209 | 210 | 211 | 212 | 213 | 214 | 215 | 216 | 217 | 218 | 219 | 220 | 221 | 222 | 223 | 224 |
| Data | 0xFF | 0x0C | 0xFF | 0x0C | 0xFF | 0x0C | 0xFF | 0x0C | 0xFF | 0x0C | 0xFF | 0x0C | 0xFF | 0x0C | 0x00 | 0x00 |
| Byte index | 225 | 226 | 227 | 228 | 229 | 230 | 231 | 232 | 233 | 234 | 235 | 236 | 237 | 238 | 239 | 240 |
| Data | 0x00 | 0x00 | 0x00 | 0x00 | 0x00 | 0x00 | 0x00 | 0x00 | 0x00 | 0x00 | 0x00 | 0x00 | 0x00 | 0x00 | 0x00 | 0x00 |
| Byte index | 241 | | | | | | | | | | | | | | | |
| Data | 0x00 | | | | | | | | | | | | | | | |

1. Byte index and data represent the current data of the pattern from example 3. If the same pattern is written into pattern 2, data are the same but the byte with index 1 has to be changed to 0x04. Data can be written at once as per [Section 4.9.4](#).
2. SPI command to write to pattern 1 memory.
3. Address in pattern 1 memory where the data storage begins.

6.2 Operation examples

6.2.1 Example 6 - how to display patterns

Some patterns have already been written into pattern 1 and 2 memories as described in the previous example. EN bit has to be set to 1 and DISP register value has to be set to 01 (for pattern 1) or 10 (for pattern 2). EN bit is located in the software control register whose address is 00h and DISP bits are located in the display control register whose address is 01h. As registers are located next to each other they can be written at once as it is shown in [Table 60](#) and [Table 61](#).

Table 60. SPI data to display pattern 1

| Byte index | 1 | 2 | 3 | 4 |
|------------|------|------|------|------|
| Data | 0x00 | 0x00 | 0x01 | 0x01 |

Table 61. SPI data to display pattern 2

| Byte index | 1 | 2 | 3 | 4 |
|------------|------|------|------|------|
| Data | 0x00 | 0x00 | 0x01 | 0x02 |

Note: Byte 1 represents SPI command to write to the control register memory. Byte 2 is the address where the writing starts. Byte 3 contains data written to address 00h (software control register). Byte 4 contains data written to address 01h (display control register).

6.2.2 Example 7 - how to enable slope operation

When slope operation is being activated, a pattern, containing non-zero slope data, has to be used. Such patterns are in examples 1, 3 and 4. In example 2, pattern has all slope data = 0. Let's suppose that a pattern with non-zero slope data has been already written into pattern 1 memory. First of all, we enable slope operation by setting SLPEN bit to 1.

Table 62. SPI data to enable slope operation

| Byte index | 1 | 2 | 3 |
|------------|------|------|------|
| Data | 0x00 | 0x20 | 0x08 |

Byte 1 represents SPI command to write to the control register memory.

Byte 2 is the address where the writing starts.

Byte 3 contains data written to address 20h (display visual control register).

As per example 6, we display pattern 1 by writing data to [Table 63](#) or pattern 2 by writing data to [Table 64](#).

Table 63. SPI data to display pattern 1

| Byte index | 1 | 2 | 3 | 4 |
|------------|------|------|------|------|
| Data | 0x00 | 0x00 | 0x01 | 0x01 |

Table 64. SPI data to display pattern 2

| Byte index | 1 | 2 | 3 | 4 |
|------------|------|------|------|------|
| Data | 0x00 | 0x00 | 0x01 | 0x02 |

6.2.3 Example 8 - how to enable PWM operation

Pattern has already been loaded into pattern 1 memory. In this example, we display pattern 1 with 50% of brightness which is achieved by enabling PWM.

First of all, we enable PWM operation and set PWM register to 128 by using data in [Table 65](#).

Table 65. SPI data to enable PWM operation (PWM control register = 128)

| Byte index | 1 | 2 | 3 | 4 |
|------------|------|------|------|------|
| Data | 0x00 | 0x20 | 0x02 | 0x80 |

Byte 1 represents SPI command to write to the control register memory.

Byte 2 is the address where the writing starts.

Byte 3 contains data written to address 20h (display visual control register).

Byte 4 contains data written to address 21h (PWM control register).

As per example 6, we display pattern 1 by writing data to [Table 66](#).

Table 66. SPI data to display in pattern 1

| Byte index | 1 | 2 | 3 | 4 |
|------------|------|------|------|------|
| Data | 0x00 | 0x00 | 0x01 | 0x01 |

6.2.4 Example 8 - scroll operation

In this example we scroll with 2 blank rows and a speed set to 5. Pattern 2 replaces pattern 1. Both patterns, 1 and 2, have already been loaded into pattern memory according to example 5. Scroll operation should start with pattern 1, so we display pattern 1 first by writing data to [Table 67](#).

Table 67. SPI data to display in pattern 1(example 5)

| Byte index | 1 | 2 | 3 | 4 |
|------------|------|------|------|------|
| Data | 0x00 | 0x00 | 0x01 | 0x01 |

Scroll parameters have to be set by writing data:

Table 68. SPI data for scroll setup

| Byte index | 1 | 2 | 3 | 4 |
|------------|------|------|------|------|
| Data | 0x00 | 0x30 | 0x13 | 0x40 |

Byte 1 represents SPI command to write to the control register memory.

Byte 2 is the address where writing starts.

Byte 3 contains data written to address 30h (scroll control 1 register). This sets the scroll speed to 5 and direction.

Byte 4 contains data that are written to address 31h (scroll control 2 register). This sets the number of blank rows to 2.

Scroll and insertion of blank rows/columns have to be enabled by writing to the display visual control register, in the following table:

Table 69. SPI data to enable scroll operation with blank rows/columns

| Byte index | 1 | 2 | 3 |
|------------|------|------|------|
| Data | 0x00 | 0x20 | 0x24 |

Byte 1 represents SPI command to write to the control register memory.

Byte 2 is the address where the writing starts.

Byte 3 contains data written to address 20h (display control register). Value 24h enables insertion of blank columns/rows and enables the scroll.

Scroll operation starts by writing to the display control register. This changes DISP bit value from 01 to 10 and so the scroll operation begins. Pattern 1 is replaced by pattern 2.

Table 70. SPI data to start scroll operation

| Byte index | 1 | 2 | 3 |
|------------|------|------|------|
| Data | 0x00 | 0x01 | 0x02 |

Byte 1 represents SPI command to write to the control register memory.

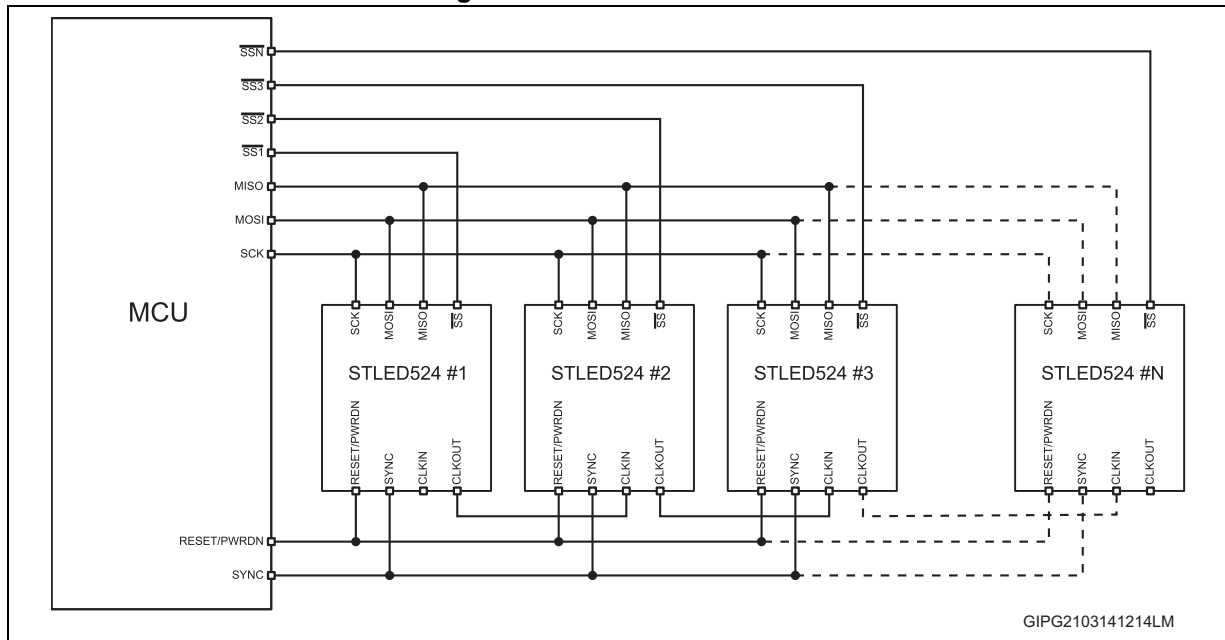
Byte 2 is the address where the writing starts.

Byte 3 contains data written to address 01h (display control register).

6.3 Multiple devices in cascade

The STLED524 multiple devices can be linked in cascade according to [Figure 30](#).

Figure 30. STLED524 cascade



- Each device in cascade needs a controlled SS input separately.
- RESET/PWRDN, SYNC, SCK, MISO and MOSI pins are connected in parallel.
- CLKOUT of nth device is connected to CLKIN of the (n+1)th device.
- CLKIN of the 1st device does not have to be connected, if internal clock of the 1st device is used to provide clock for the whole cascade.
- Another possibility for CLOCK signal is to connect all CLKIN pins to an external clock.

6.3.1 Register setup for the STLED524 cascade

Table 71. Cascade register setup

| Position | CLKIN | CLKOUT | SYNCEN | SYNCSEL |
|------------|-------|--------|--------|---------|
| 1 | 0 | 1 | 1 | X |
| 2 to (n-1) | 1 | 1 | 1 | X |
| n | 1 | 0 | 1 | X |

Position means position of the device in cascade:

CLKIN bit of the first device is set to 0, because the first device uses its internal clock.

CLKOUT bit of the last device is set to 0, because there is no other device connected.

SYNCEN bit of all devices has to be set to 1.

SYNCSEL bit can be either 0 or 1, but the value has to be the same as all devices in cascade.

7 Package mechanical data

In order to meet environmental requirements, ST offers these devices in different grades of ECOPACK® packages, depending on their level of environmental compliance. ECOPACK specifications, grade definitions and product status are available at: www.st.com. ECOPACK is an ST trademark.

Figure 31. CSP 56 bumps (3.4x3.0 mm) drawings

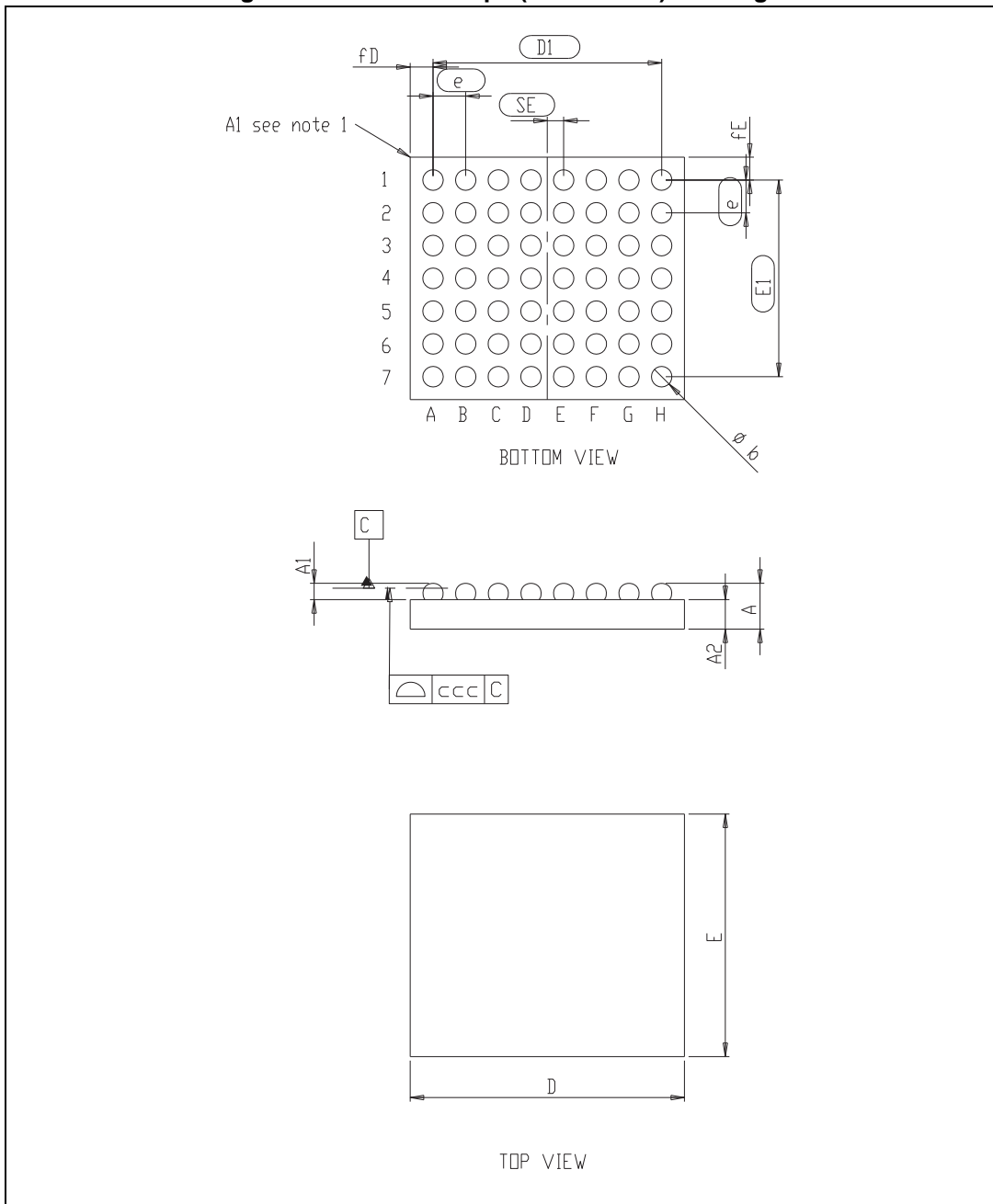


Table 72. CSP 56 bumps (3.4x3.0 mm) mechanical data

| Dim. | mm | | |
|------|------|-------|------|
| | Min. | Typ. | Max. |
| A | 0.50 | 0.55 | 0.60 |
| A1 | 0.17 | 0.20 | 0.23 |
| A2 | 0.33 | 0.35 | 0.37 |
| b | 0.23 | 0.25 | 0.29 |
| D | 3.34 | 3.37 | 3.40 |
| D1 | | 2.8 | |
| E | 2.94 | 2.97 | 3.0 |
| E1 | | 2.4 | |
| e | | 0.40 | |
| SE | | 0.20 | |
| fD | | 0.285 | |
| fE | | 0.285 | |
| ccc | | 0.075 | |

8 Revision history

Table 73. Document revision history

| Date | Revision | Changes |
|-------------|----------|----------------|
| 14-Apr-2014 | 1 | First release. |

Please Read Carefully:

Information in this document is provided solely in connection with ST products. STMicroelectronics NV and its subsidiaries ("ST") reserve the right to make changes, corrections, modifications or improvements, to this document, and the products and services described herein at any time, without notice.

All ST products are sold pursuant to ST's terms and conditions of sale.

Purchasers are solely responsible for the choice, selection and use of the ST products and services described herein, and ST assumes no liability whatsoever relating to the choice, selection or use of the ST products and services described herein.

No license, express or implied, by estoppel or otherwise, to any intellectual property rights is granted under this document. If any part of this document refers to any third party products or services it shall not be deemed a license grant by ST for the use of such third party products or services, or any intellectual property contained therein or considered as a warranty covering the use in any manner whatsoever of such third party products or services or any intellectual property contained therein.

UNLESS OTHERWISE SET FORTH IN ST'S TERMS AND CONDITIONS OF SALE ST DISCLAIMS ANY EXPRESS OR IMPLIED WARRANTY WITH RESPECT TO THE USE AND/OR SALE OF ST PRODUCTS INCLUDING WITHOUT LIMITATION IMPLIED WARRANTIES OF MERCHANTABILITY, FITNESS FOR A PARTICULAR PURPOSE (AND THEIR EQUIVALENTS UNDER THE LAWS OF ANY JURISDICTION), OR INFRINGEMENT OF ANY PATENT, COPYRIGHT OR OTHER INTELLECTUAL PROPERTY RIGHT.

ST PRODUCTS ARE NOT DESIGNED OR AUTHORIZED FOR USE IN: (A) SAFETY CRITICAL APPLICATIONS SUCH AS LIFE SUPPORTING, ACTIVE IMPLANTED DEVICES OR SYSTEMS WITH PRODUCT FUNCTIONAL SAFETY REQUIREMENTS; (B) AERONAUTIC APPLICATIONS; (C) AUTOMOTIVE APPLICATIONS OR ENVIRONMENTS, AND/OR (D) AEROSPACE APPLICATIONS OR ENVIRONMENTS. WHERE ST PRODUCTS ARE NOT DESIGNED FOR SUCH USE, THE PURCHASER SHALL USE PRODUCTS AT PURCHASER'S SOLE RISK, EVEN IF ST HAS BEEN INFORMED IN WRITING OF SUCH USAGE, UNLESS A PRODUCT IS EXPRESSLY DESIGNATED BY ST AS BEING INTENDED FOR "AUTOMOTIVE, AUTOMOTIVE SAFETY OR MEDICAL" INDUSTRY DOMAINS ACCORDING TO ST PRODUCT DESIGN SPECIFICATIONS. PRODUCTS FORMALLY ESCC, QML OR JAN QUALIFIED ARE DEEMED SUITABLE FOR USE IN AEROSPACE BY THE CORRESPONDING GOVERNMENTAL AGENCY.

Resale of ST products with provisions different from the statements and/or technical features set forth in this document shall immediately void any warranty granted by ST for the ST product or service described herein and shall not create or extend in any manner whatsoever, any liability of ST.

ST and the ST logo are trademarks or registered trademarks of ST in various countries.

Information in this document supersedes and replaces all information previously supplied.

The ST logo is a registered trademark of STMicroelectronics. All other names are the property of their respective owners.

© 2014 STMicroelectronics - All rights reserved

STMicroelectronics group of companies

Australia - Belgium - Brazil - Canada - China - Czech Republic - Finland - France - Germany - Hong Kong - India - Israel - Italy - Japan - Malaysia - Malta - Morocco - Philippines - Singapore - Spain - Sweden - Switzerland - United Kingdom - United States of America

www.st.com