

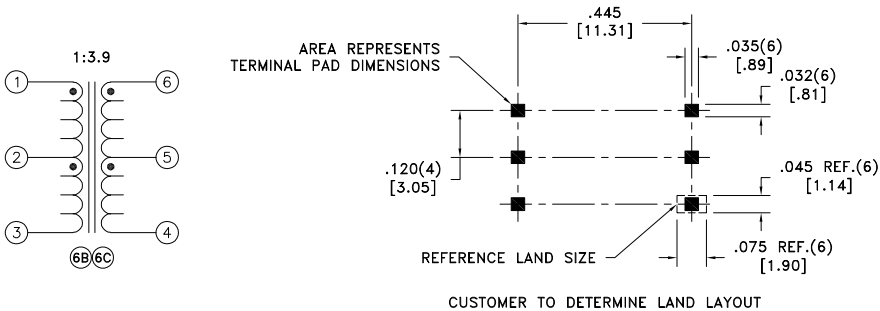
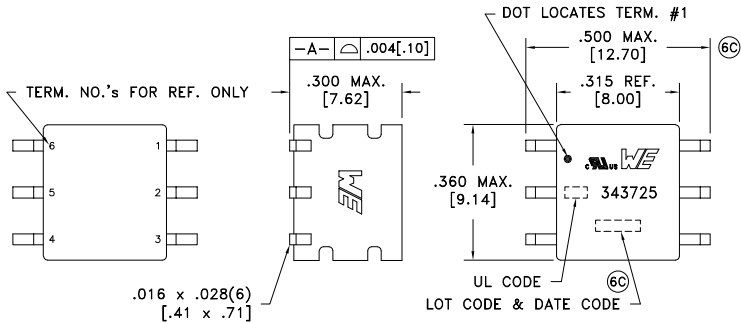
CUSTOMER TERMINAL	RoHS	LEAD(Pb)-FREE
Sn96%, Ag4%	Yes	Yes

more than you expect



ELECTRICAL SPECIFICATIONS @ 25°C unless otherwise noted:

PARAMETER	TEST CONDITIONS	VALUE
D.C. RESISTANCE	1-3 @20°C	0.355 ohms max.
D.C. RESISTANCE	6-4 @20°C	0.87 ohms max.
INDUCTANCE	1-3 100kHz, 10mVAC, Ls	250uH min.
DIELECTRIC	1-6 6250 Vrms, 1 second	5000 Vrms, 1 minute
URNS RATIO	(6-4):(1-3)	3.9:1, ±2%



- 6C GENERAL SPECIFICATIONS:  
OPERATING TEMPERATURE RANGE: -40°C to +125°C including temp rise.
- 6C Current Rating: 350mAAC
- 6D 6C Voltage Time: 9VuS
- 6C Designed to comply with the following requirements as defined by IEC60601-1(ed); am1:  
- Providing two means of Patient Protection up to working voltage of 250VAC.
- 6C 8mm min. creepage & clearance distance between PRI & SEC.
- 6C Designed to comply with the following requirements as defined by IEC60950-1, EN60950-1, UL60950-1/CSA60950-1 and AS/NZS60950.1:  
- Reinforced insulation for a primary circuit at a working voltage of 250VAC, Overvoltage Category II, Pollution Degree 2, up to 2km above sea level.
- 6C Designed to comply with the following requirements as defined by IEC60664-1,  
- Reinforced insulation for a primary circuit at a working voltage of 400VAC up to 2km above sea level.

Wire insulation & RoHS status not affected by wire color.  
Wire insulation color may vary depending on availability.

REV.	DATE	Packaging Specifications
6D	8/19	Method: Tape & Reel
6C	6/19	PKG-0948
6B	5/18	www.we-online.com/midcom
6A	4/18	SEE REVISION SHEET FOR REVISION LEVEL



Tolerances unless otherwise specified:  
Angles: ±1° Decimals: ±.005 [.13]  
Fractions: ±1/64 Footprint: ±.005 [.13]

This drawing is dual dimensioned. Dimensions in brackets are in millimeters.

DRAWING TITLE  
**TRANSFORMER**

eiSos p/n: 750343725



PART NO.  
**750343725**

SPECIFICATION SHEET 1 OF 1

AGENCY NUMBER

UL CODE  
FILE# E205930 SN

UL CODE  
FILE# E358628 SN

6C