

**Signal lamps with lamp socket - BA 9s (MBC/MCC), 18.2 mm, housing****1.63.018.091/0000**

Please include the desired lens and LED / lamp in your order.

**General information**

Form of lens	round
Diameter of collar	22 mm

**Dimensions**

Overall height	14 mm
Mounting depth	47 mm
Mounting hole	18.2 mm

**Mechanical design**

Mounting	ring nut
Terminals	solder/quick connector 6.3x0.8 / 2x 2.8x0.8mm
Lamp socket	BA 9 s
Lamp	LED or filament lamp

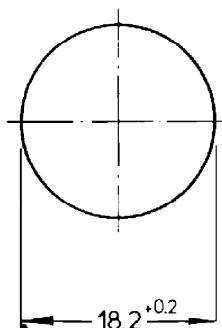
**Electrical characteristics**

Voltage limit max.	250 V
Power limit max.	2 W

**Other specifications**

Degree of protection from front side	IP65 (DIN EN 60529)
Weight	22 g
Approvals	VDE T120°C / 2 W
ROHS compliant	yes
REACH compliant	yes

Mounting hole



## Drawing with lens

