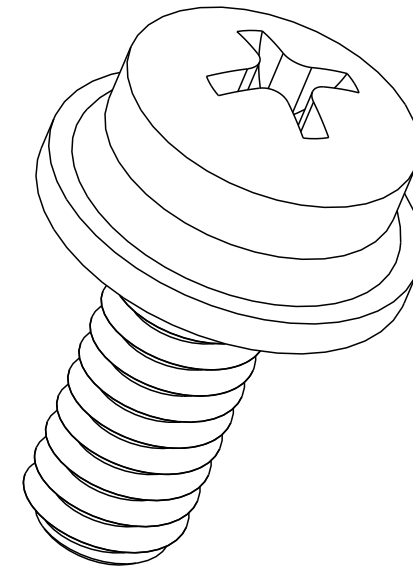
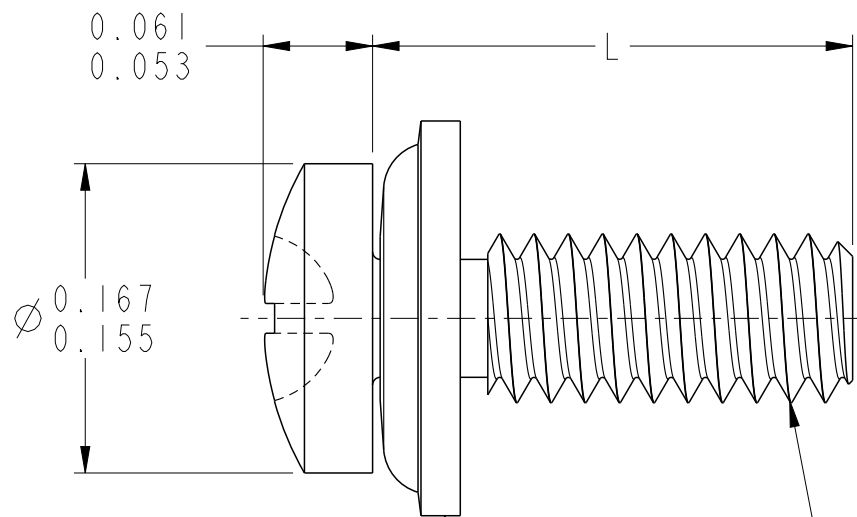
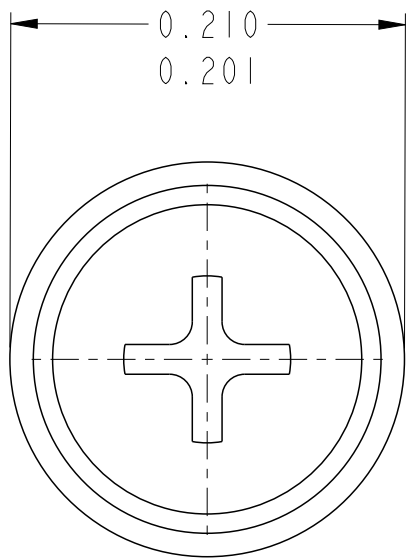


PART NUMBER	"L" DIM
10091790-001LF	.250" ^{+.000} _{-.020}
10091790-002LF	.375" ^{+.000} _{-.020}
10091790-003LF	.500" ^{+.000} _{-.020}
10091790-004LF	.625" ^{+.000} _{-.020}



SQUARE CONE LOCK WASHER

2-56 UNC-2A THREAD

NOTES:

1. MATERIAL: SCREW: 18-8 STAINLESS STEEL PER ASTM F593
WASHER: 410 STAINLESS STEEL
2. DRIVE SIZE: #1 PHILLIPS

spec ref		-		dr		Jim Swain		2010/01/26		projection		INCH		size		A3		scale		10:1							
tolerance std		TOLERANCES UNLESS OTHERWISE SPECIFIED		eng		Jim Swain		2011/05/19						ecn no		-		rel level		Released							
ASME Y14.5				chr		-		-																			
-				appr		Steve Minich		2011/05/19														product family		-			
surface				linear		0.X		± -				title		SCREW, SEMS, PAN-HEAD, PHILLIPS, #2-56 THREADED		dwg no		10091790		rev		A					
ASME Y14.5																								0.XX		± -	
																								0.XXX		± -	
angular		0°		± -°		www.fci.com		cat. no.		SEE P/N TABLE		Product - Customer Drw		sheet 1 of 1													