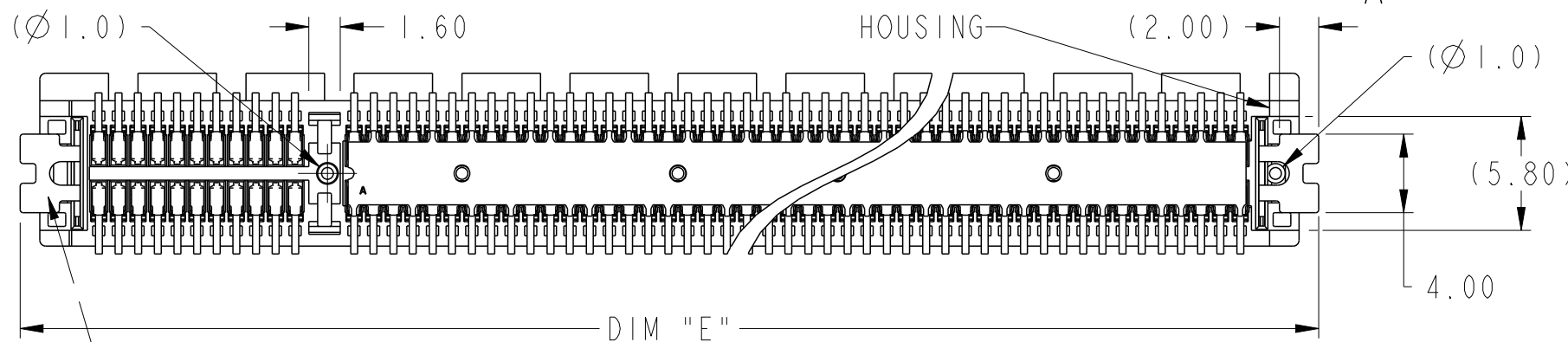
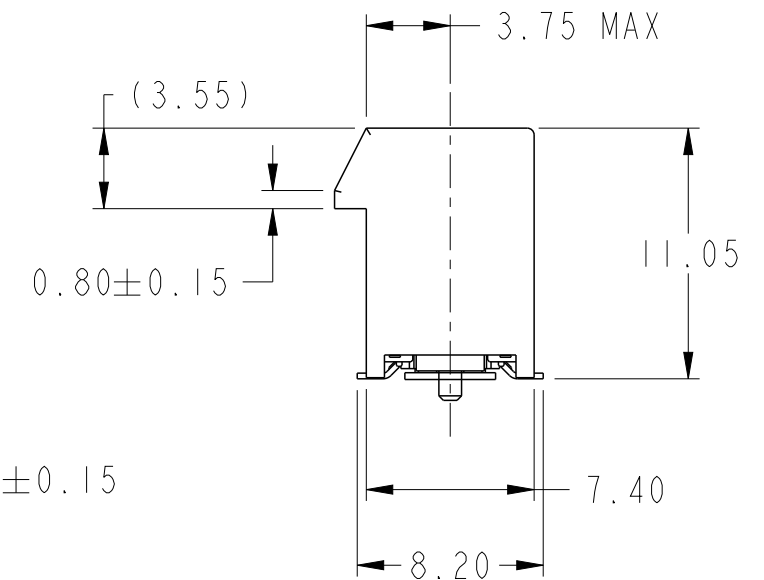
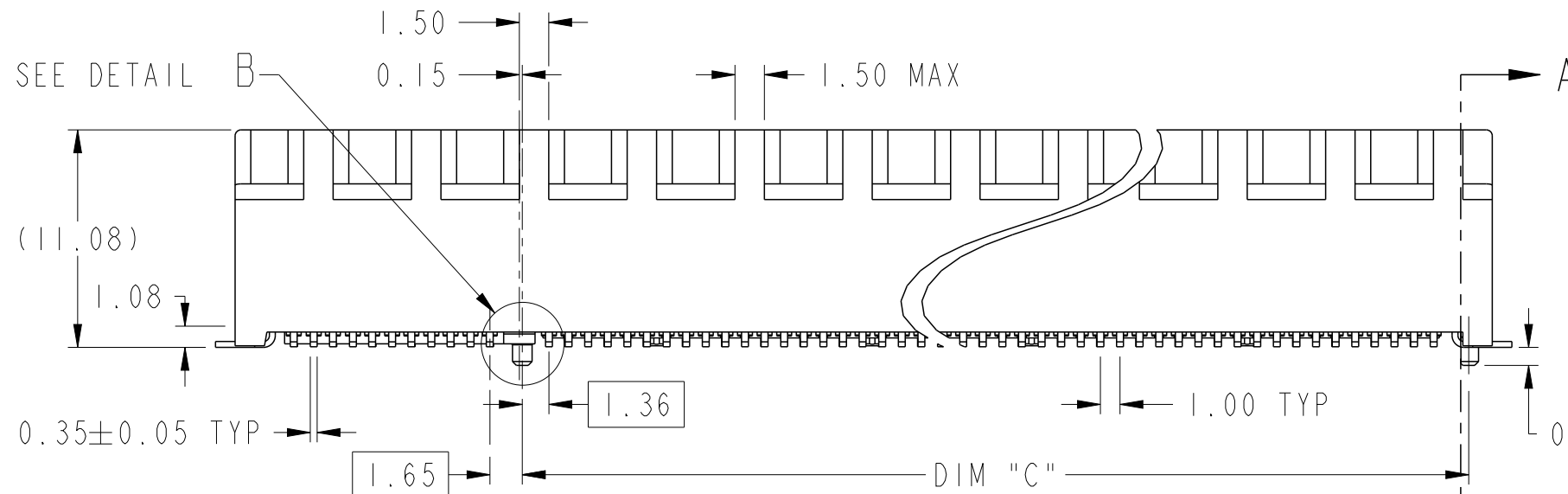
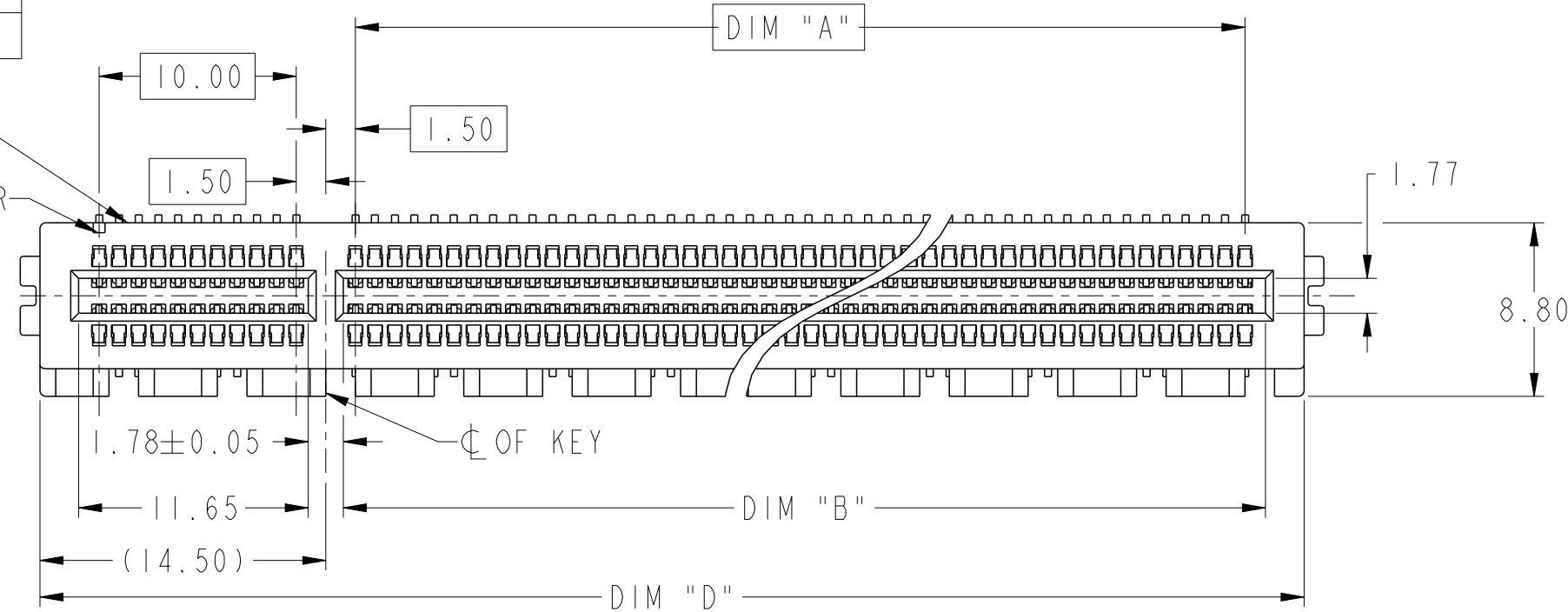


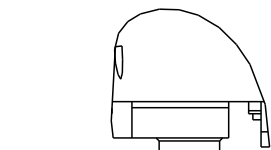
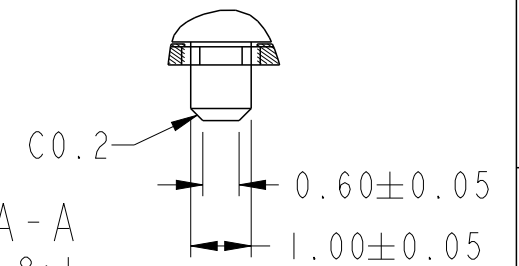
PRODUCT PARTNUMBER
10144667-1XXX0LF

DATA CODE &
PARTNO

#AI IDENTIFIER



SECTION A-A
SCALE 8:1



DETAIL B
SCALE 8:1

HOLDDOWN
CLIP

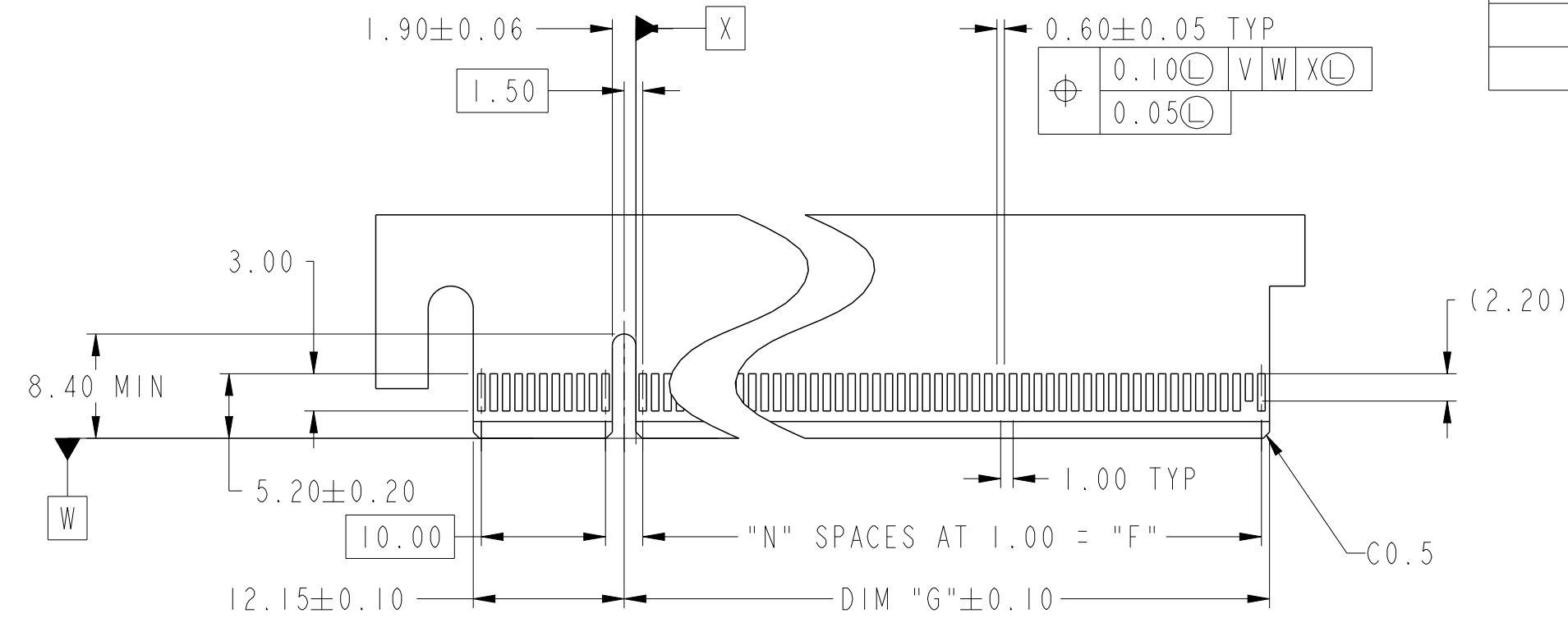
spec ref	-	dr	Cheong, Matthe	2018/01/10	projection	MM	size	A3	scale	3:1
tolerance std	ISO 406 ISO 1101	eng	Cheong, Matthe	2018/05/22			ecn no	ELX-S-30246-1	rel level	Released
TOLERANCES UNLESS OTHERWISE SPECIFIED		chr	-	-						
surface	ISO 1302	appr	Koon-Poh Tay	2018/05/25						
<div> <div>linear</div> <div>angular</div> </div>	<div> <div>0.X</div> <div>0.XX</div> <div>0.XXX</div> </div>	<div> <div>±0.30</div> <div>±0.20</div> <div>±0.1</div> </div>	<div> <div>±0°</div> <div>±2°</div> </div>	<div> <div>Amphenol FCI</div> <div>www.fci.com</div> </div>	<div> <div>PCI Express Gen 5 (32Gb/s)</div> <div>SMT Type</div> </div>	<div> <div>cat. no.</div> <div>-</div> </div>	<div> <div>Product - Customer Drw</div> </div>	<div> <div>sheet 1 of 4</div> </div>	<div> <div>rev</div> <div>B</div> </div>	<div> <div>dwg no</div> <div>10144667</div> </div>

A

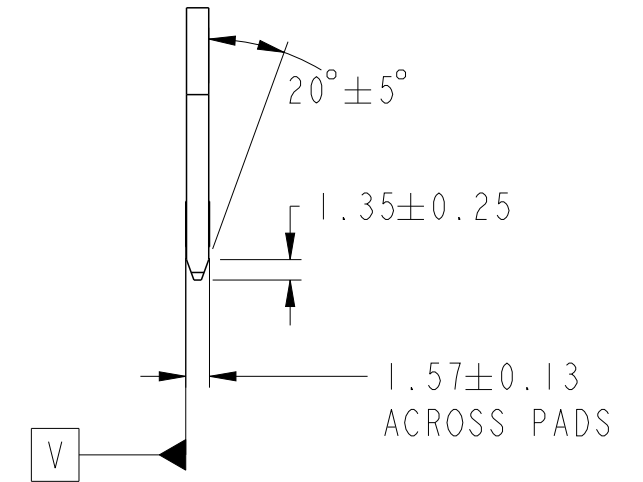
B

C

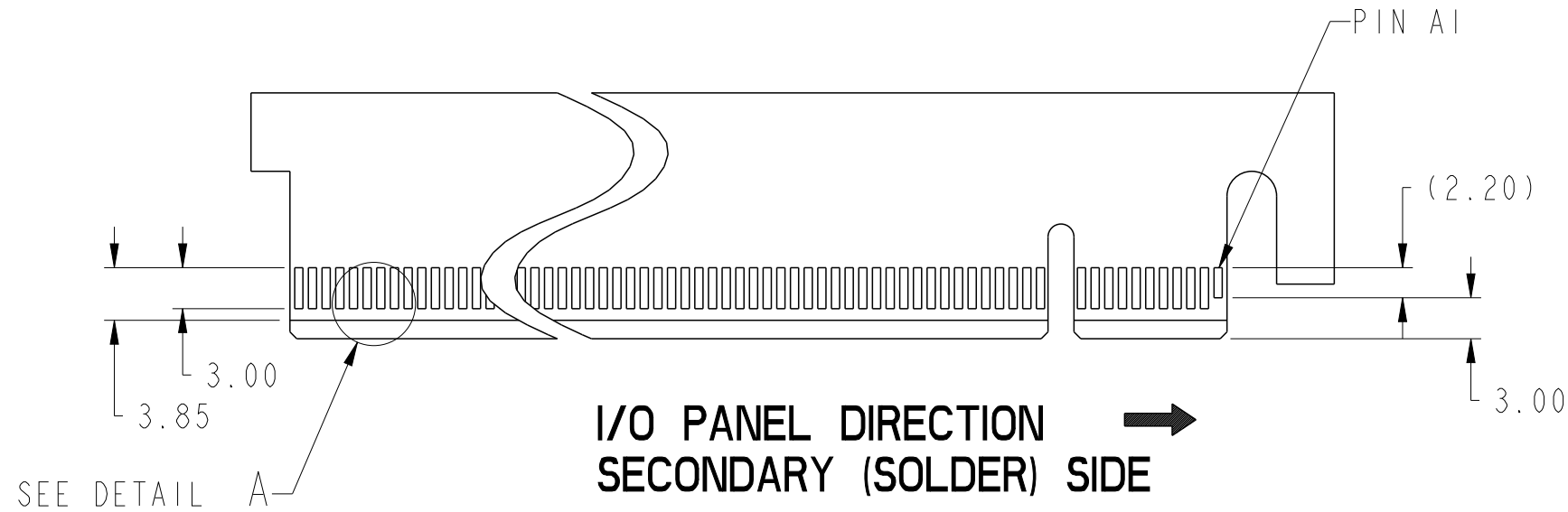
D



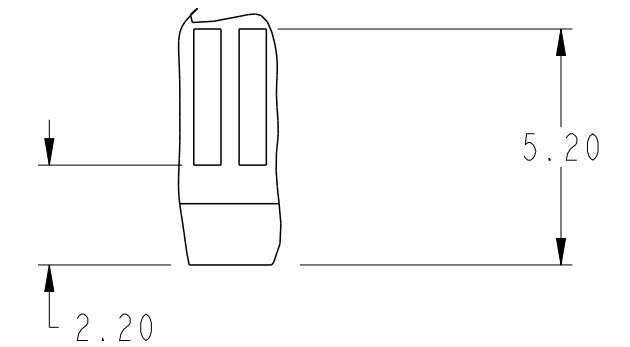
CONNECTOR LINK WIDTH	POSITION	N	DIM "G"	DIM "F"	PIN "L"
X1	36	6	8.15	6.00	B17
X4	64	20	22.15	20.00	B31
X8	98	37	39.15	37.00	B48
X16	164	70	72.15	70.00	B81



← I/O PANEL DIRECTION
PRIMARY (COMPONENT) SIDE



I/O PANEL DIRECTION
SECONDARY (SOLDER) SIDE →



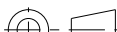

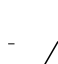
DETAIL A
SCALE 6:1

1. NO TIE BAR PERMITTED FROM CARD EDGE TO LEADING EDGE OF PAD FOR PIN A1 AND PIN "L".
2. CHAMFER EDGES MUST BE FREE OF CUTTING BURRS.
3. TOLERANCE : ± 0.13
4. CONTACT APCI ENGINEERING FOR SI REPORT

spec ref	-	dr	Cheong, Matthe	2018/01/10	projection	MM	size	A3	scale	2:1
tolerance std	ISO 406 ISO 1101	eng	Cheong, Matthe	2018/05/22	chr	-	ecn no	ELX-S-30246-1	rel level	Released
surface	linear	appr	Koon-Poh Tay	2018/05/25	product family	PCI express	rel level	Released	rev	B
ISO 1302	angular	0°	±2°	www.fci.com	cat. no.	Product - Customer Drw	sheet 2 of 4			



DIMENSIONS								
POSITION	A	B $^{+0.15}_{-0.05}$	C ± 0.10	D ± 0.23	E ± 0.20	H ± 0.10	J	K ± 0.10
36	6.00	7.65	9.15	25.00	27.00	28.00	6.00	9.15
64	20.00	21.65	23.15	39.00	41.00	42.00	20.00	23.15
98	37.00	38.65	40.15	56.00	58.00	59.00	37.00	40.15
164	70.00	71.65	73.15	89.00	91.00	92.00	70.00	73.15

spec ref -				dr	Cheong, Matthe	2018/01/10	projection			size	A3	scale	4:1
tolerance std				eng	Cheong, Matthe	2018/05/22				ecn no	ELX-S-30246-1		
ISO 406 ISO 1101				chr	-	-							
TOLERANCES UNLESS OTHERWISE SPECIFIED				appr	Koon-Poh Tay	2018/05/25	product family		PCI express	rel level		Released	
surface -			linear	0.X	±0.30	Amphenol FCI	title	PCI Express Gen 5 (32Gb/s)	dwg no	10144667	rev	B	
ISO 1302			0.XX	±0.20									
			0.XXX	±0.1									
		angular	0°	±2°	www.fci.com	cat. no.	-	Product - Customer Drw			sheet 3 of 4		

PRODUCT NUMBER CODE

10144667-□□□□0LF

HOUSING COLOR

1: BLACK

CONTACT AREA PLATING

1: 30u" Au
2: 15u" Au

PACKAGING OPTIONS

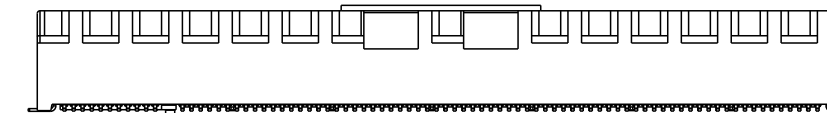
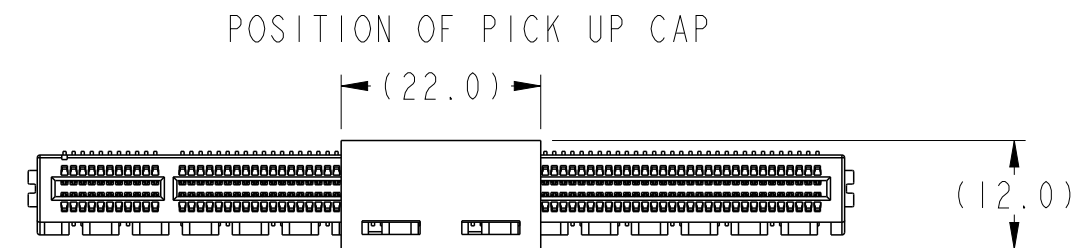
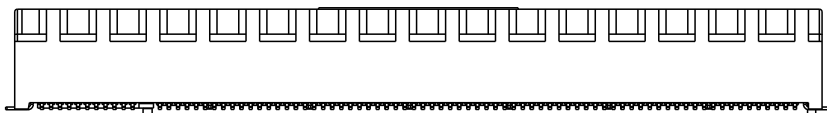
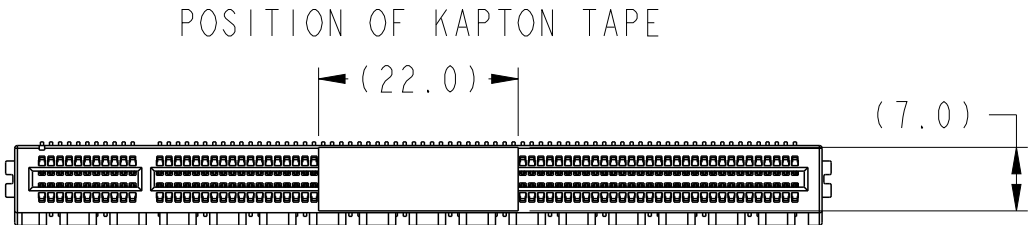
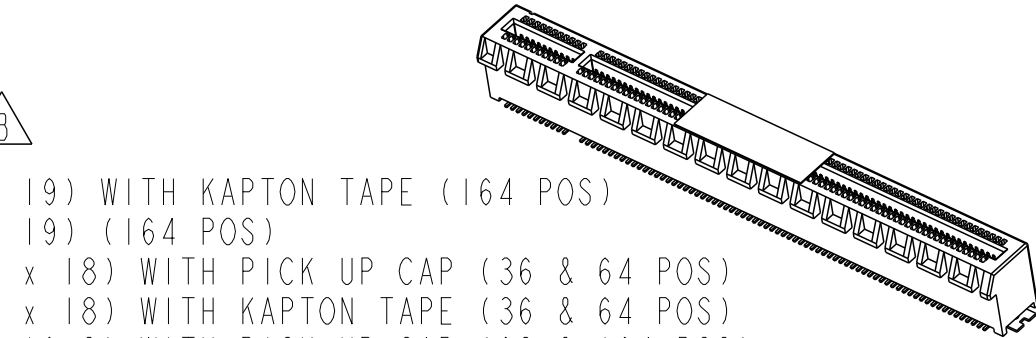
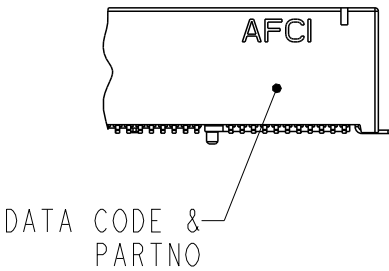
- A: HARD TRAY (DIM: 323 x 136 x 19) WITH KAPTON TAPE (164 POS)
Q: HARD TRAY (DIM: 323 x 136 x 19) (164 POS)
C: SOFT TRAY (DIM: 317.5 x 235 x 18) WITH PICK UP CAP (36 & 64 POS)
T: SOFT TRAY (DIM: 317.5 x 235 x 18) WITH KAPTON TAPE (36 & 64 POS)
X: HARD TRAY (DIM: 330 x 235 x 19.3) WITH PICK UP CAP (98 & 164 POS)
Y: HARD TRAY (DIM: 330 x 235 x 19.3 WITH KAPTON TAPE (98 & 164 POS)
Z: HARD TRAY (DIM: 330 x 235 x 19.3 WITH KAPTON TAPE, 86MM (164 POS)

NO. OF POSITION

- 0: 36 POSITIONS
1: 64 POSITIONS
2: 98 POSITIONS
3: 164 POSITIONS

NOTES:

1. MATERIAL:
HOUSING: HIGH PERFORMANCE RESINS, GLASS FILLED, UL94V-0
CONTACT: COPPER ALLOY.
HOLDDOWN CLIPS: COPPER ALLOY
2. PLATING:
CONTACT: UNDERPLATE: 50u" NICKEL OVER ALL.
SOLDER AREA: 100u" TIN (LEAD FREE).
MATING AREA: SEE PRODUCT NUMBER CODE.
HOLDDOWN CLIP: 100u" TIN OVER 50 u" NICKEL.
3. PRODUCT SPECIFICATION: GS-12-1406
4. PRODUCT MEETS EUROPEAN UNION DIRECTIVES AND OTHER COUNTRY REGULATIONS AS DESCRIBED IN GS-22-008.
5. DATE CODE "MMDDYYL", MMDDYY IS ASSEMBLY DATE.
" L" IS AFCI PRODUCTION SITE.
6. THIS HOUSING WILL WITHSTAND EXPOSURE TO 260° PEAK TEMPERATURE FOR 10 SECONDS IN A CONVECTION, INFRA-RED OR VAPOR PHASE REFLOW OVEN.



spec ref -				dr	Cheong, Matthe	2018/01/10	<div>projection</div> <div></div>	<div>MM</div> <div></div>	size	A3	scale	2:1
tolerance std ISO 406 ISO 1101	TOLERANCES UNLESS OTHERWISE SPECIFIED			eng	Cheong, Matthe	2018/05/22			ecn no	ELX-S-30246-1		
				chr	-	-			product family PCI express			rel level Released
				appr	Koon-Poh Tay	2018/05/25						
<div>surface</div> <div></div> <div>ISO 1302</div>	linear	0.X	±0.30	Amphenol FCI	title PCI Express Gen 5 (32Gb/s) SMT Type	dwg no	10144667		rev B			
		0.XX	±0.20									
		0.XXX	±0.1									
	angular	0°	±2°	www.fci.com	cat. no.	Product - Customer Drw			sheet 4 of 4			