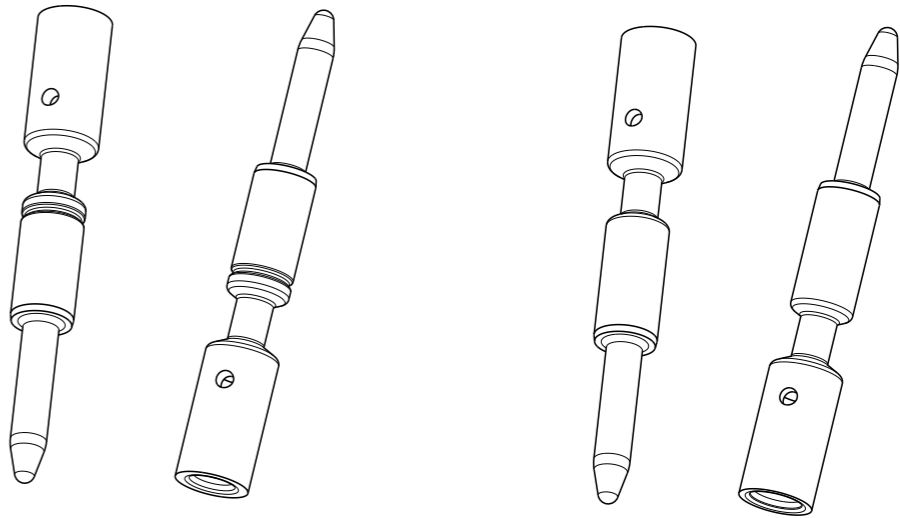
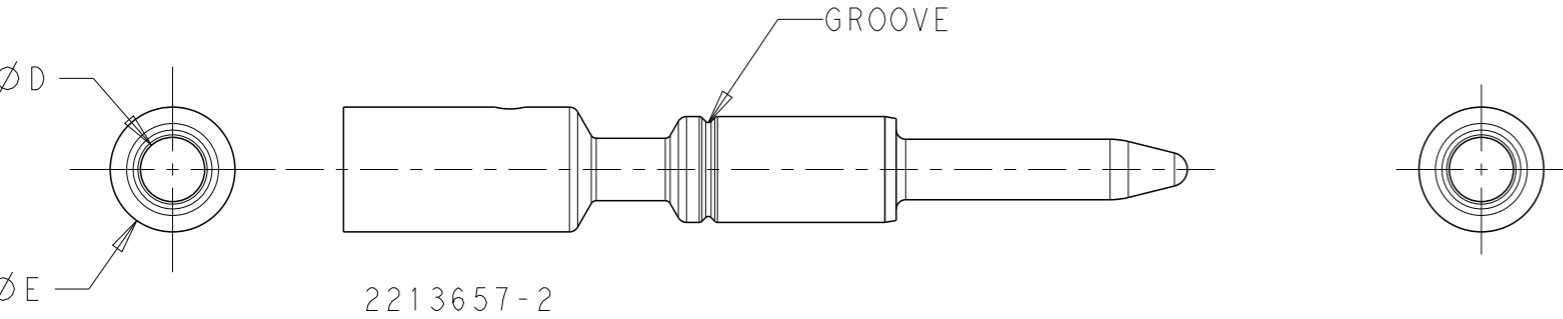
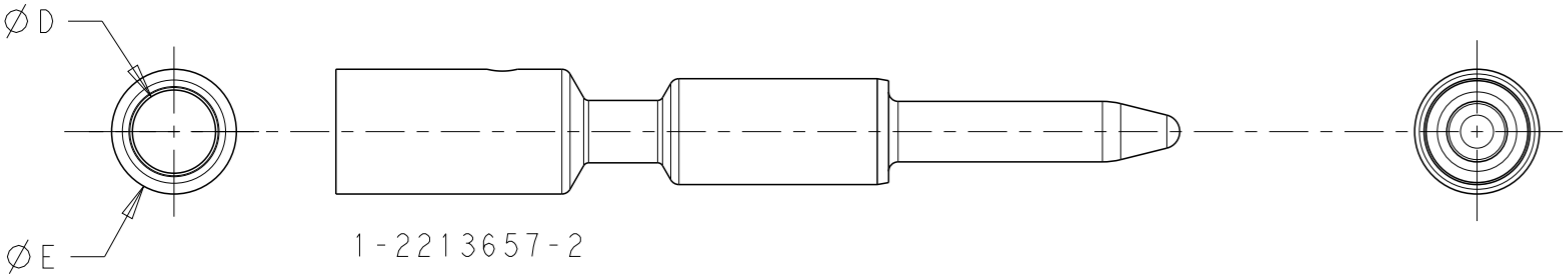
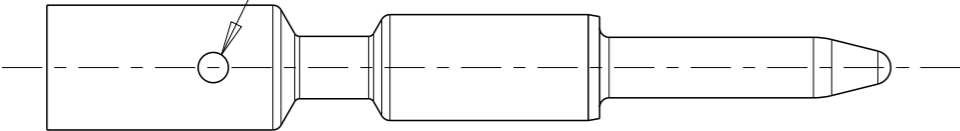


REVISIONS					
P	LTR	DESCRIPTION	DATE	DWN	APVD
	A	REVISED AS PER ECR-15-009852	13JUL2015	RS	JL
	A1	REVISED AS PER ECR-15-012327	20AUG2015	RS	JL

WIRE VIEWING HOLE



2213657-2

1-2213657-2

- NOTES:
- MATERIALS AND FINISH:  
COPPER ALLOY, FINISH: Sn OVER Ni
  - MUST COMPLY WITH DIRECTIVE 2002/95/EC (ROHS)
  - THIS PRODUCT HAS NOT COMPLETED VALIDATION TESTING

2.5	3.30	2.20	0	1-2213657-2
1.5	3.30	1.70	1	2213657-2
WIRE (sqmm)	DIM. "E"	DIM. "D"	NO. OF GROOVES	PART NO

THIS DRAWING IS A CONTROLLED DOCUMENT.		DWN RAVI.S 17APR2015	<div>TE Connectivity</div> <div>MACHINED PIN CONTACT NECTOR* M-LINE-SEALED</div>	
DIMENSIONS: mm		CHK LATORRE JUSTIN 17APR2015		
		APVD LATORRE JUSTIN 17APR2015		
		PRODUCT SPEC 108-133014		
TOLERANCES UNLESS OTHERWISE SPECIFIED:		APPLICATION SPEC 114-32111	NAME	
MATERIAL NOTE 1		WEIGHT -	SIZE A3	CAGE CODE -
FINISH NOTE 1			DRAWING NO C-2213657	RESTRICTED TO -
Customer Drawing			SCALE 10:1	SHEET 1 OF 1
				REV A1