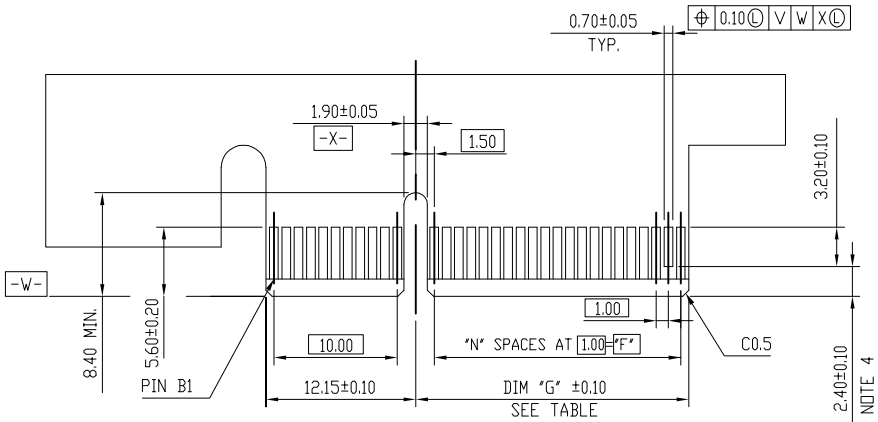
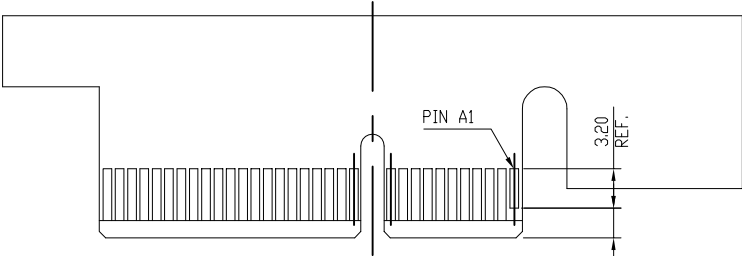


DIMENSIONS				
POSITION	B ± 0.20	C ± 0.20	D ± 0.23	E
36	27.00	9.15	25.00	6
64	41.00	23.15	39.00	20
98	58.00	40.15	56.00	37
164	91.00	73.15	89.00	70

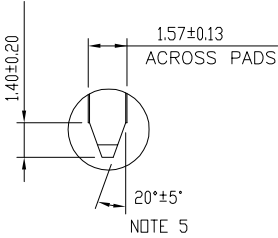
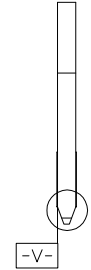
[illegible]



I/O PANEL DIRECTION
PRIMARY (COMPONENT) SIDE



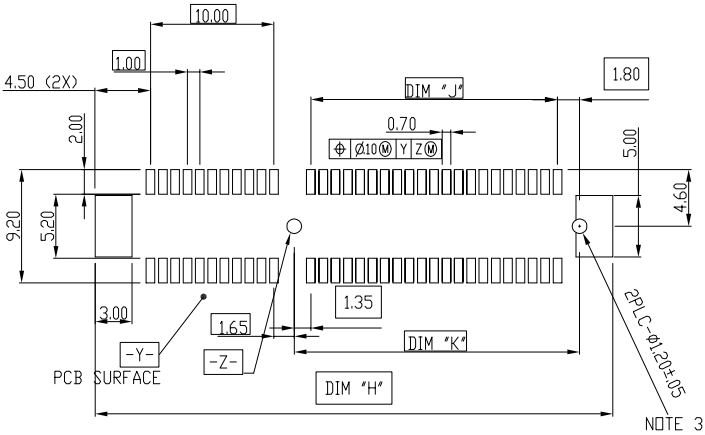
I/O PANEL DIRECTION
SECONDARY (SOLDER) SIDE



SCALE 2:1




#	POS	REF.	N	DIM "G"	DIM "F"	"F"
36			6	8.15	6.00	B17
64			20	22.15	20.00	B31
98			37	39.15	37.00	B48
164			70	72.15	70.00	B81

mat'l. code				surface 58	tolerance	projection MM scale N/A	product family PCI_EXPRESS			
ltr				ecn no	dr		title			
				date			PCI_EXPRESS_CARD_EDGE_GEN3			
							ONE_OPEN-END_SMT_ASS'Y			
				dr	ZHENHUA_LIU	2015-12-07	dwg no			
				enr	ZHENHUA_LIU	2015-12-07	sheet 2 of 4			
				chr	STONE_LI	2015-12-07	10136870			
				app	PM_ZHENG	2015-12-07	type			
							CUSTOMER Drawing			
sheet index	revision	A								
	sheet	2								



RECOMMENDED PCB LAYOUT, PAD TYPE

DIMENSIONS							
POSITION	B ±0.20	C ±0.20	D ±0.23	E	H ±0.10	J	K ±0.10
36	27.00	9.15	25.00	6	28.00	6.00	9.15
64	41.00	23.15	39.00	20	42.00	20.00	23.15
98	58.00	40.15	56.00	37	59.00	37.00	40.15
164	91.00	73.15	89.00	70	92.00	70.00	73.15

mat'l. code				surface 58 / tolerance ASME_Y14.5 / ASME_Y14.5		projection 		product family PCI_EXPRESS			
ltr	ecn	no	dr	date	tolerances unless otherwise specified			title			
					angles	.X±.2		PCI_EXPRESS_CARD_EDGE_GEN3			
					Linear	.XX±.13		ONE_OPEN-END_SMT_ASS'Y			
					0'±2'	.XXX±.05		scale N/A			
				dr	ZHENHUA_LIU	2015-12-07		dwg no		sheet 3 of 4	size
				engr	ZHENHUA_LIU	2015-12-07		10136870		A4	
				chr	STONE_LI	2015-12-07					
				appd	PM_ZHENG	2015-12-07		type CUSTOMER Drawing			
sheet index		revision sheet		A 3							

NOTES:

1.MATERIAL:

HOUSING: NYLON, GLASS FILLED UL94V-0 RATE,

TERMINAL: COPPER ALLOY

PLATING: SEE PRODUCT NUMBER CODE

METAL PADS: COPPER ALLOY

FINISH: TIN OVER NICKEL

2.PRODUCT SPECIFICATION: GS-12-390,PACKAGING SPECIFICATION: GS-14-1451(HARD TRAY); GS-14-1143(STANDARD PACKING).

③THE HORIZONTAL AXIS FOR THE PAD PATTERN IS ESTABLISHED BY

A LINE THROUGH THE CENTER OF THE TWO Ø1.0 HOLES.

THE VERTICAL AXIS IS 90° TO THE HORIZONTAL AXIS, THROUGH THE CENTER OF DATUM -Z-

④NO TIE BAR PERMITTED FROM CARD EDGE TO LEADING EDGE OF PAD FOR PINS A1.

⑤CHAMFER EDGES MUST BE FREE OF CUTTING BURRS.

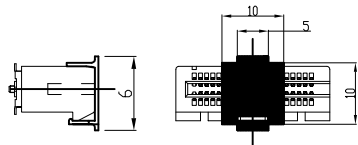
6.RoHS COMPATIBLE PRODUCT SPECIFICATIONS

a - PLATING:

- "LF" MEANS THE PRODUCT IS LEAD-FREE

b - MANUFACTURING PROCESS COMPATIBILITY

- THE HOUSING WILL WITHSTAND EXPOSURE TO 260°C±5°C PEAK TEMPERATURE FOR 5 SECONDS IN A CONVECTION, INFRA-RED OR VAPOR PHASE REFLOW OVEN.



POSITION OF CAP

PRODUCT NUMBER CODE

10136870 - X X X X L F

LEAD FREE OPTION

PACKAGING OPTIONS

T-TRAY PACKAGING WITHOUT CAP
 P-TAPE & REEL PACKAGING WITH CAP (FOR 36P & 64P& 98P OPTIONS ONLY)
 C-TRAY PACKAGING WITH CAP
 Y-HARD TRAY (FOR 164P OPTION ONLY)
 B-HARD TRAY WITH CAP (FOR 164P OPTION ONLY)

POS OPTIONS

0-36
 1-64
 2-98
 3-164

HOUSING COLOR OPTIONS

1-BLACK

TERMINAL PLATING OPTIONS

0-50u" Ni UNDERPLATE
 30u" Au CONTACT AREA
 100u" TIN TAIL AREA -----COMPATIBLE RoHS
 1-50u" Ni UNDERPLATE
 15u" Au CONTACT AREA
 100u" TIN TAIL AREA -----COMPATIBLE RoHS
 2-50u" Ni UNDERPLATE
 GOLD FLASH CONTACT AREA
 100u" TIN TAIL AREA -----COMPATIBLE RoHS

mat'l. code				surface 58	tolerance	projection	product family			
				ASME_Y14.5	ASME_Y14.5		PCI_EXPRESS			
ltr	ecn no	dr	date	tolerances unless otherwise specified			title			
				angles	.X±.2		PCI_EXPRESS_CARD_EDGE_GEN3			
				pos	.XX±.13		ONE_OPEN-END_SMT_ASS'Y			
				0'±2'	.XXX±.05	scale N/A	dwg no			
				dr	ZHENHUA_LIU	2015-12-07	sheet 4 of 4			
				engr	ZHENHUA_LIU	2015-12-07	10136870			
				chr	STONE_LI	2015-12-07	A4			
				appd	PM_ZHENG	2015-12-07	type			
sheet	revision	A					CUSTOMER Drawing			
index	sheet	4								