

THIS DOCUMENT IS THE PROPERTY OF
KEYSTONE ELECTRONICS CORP. AND
SHALL NOT BE REPRODUCED, DISTRIBUTED
OR USED AS A BASIS FOR MANUFACTURE
WITHOUT PRIOR WRITTEN PERMISSION
FROM KEYSTONE ELECTRONICS CORP.

The technical drawing illustrates a terminal board with two main views: a top view and a side view.

Top View Dimensions:

- Total length: 13.125 ± .015
- Section width: 2.625 ± .015
- Internal section width: 2.250 ± .010
- Terminal pitch: .375 TYP.
- Left edge offset: .187 ± .015
- Vertical distance from centerline to top hole: 1.500 ± .015
- Vertical distance from centerline to bottom hole: 1.187 ± .010
- Bottom edge offset: .156 ± .015

Side View Dimensions:

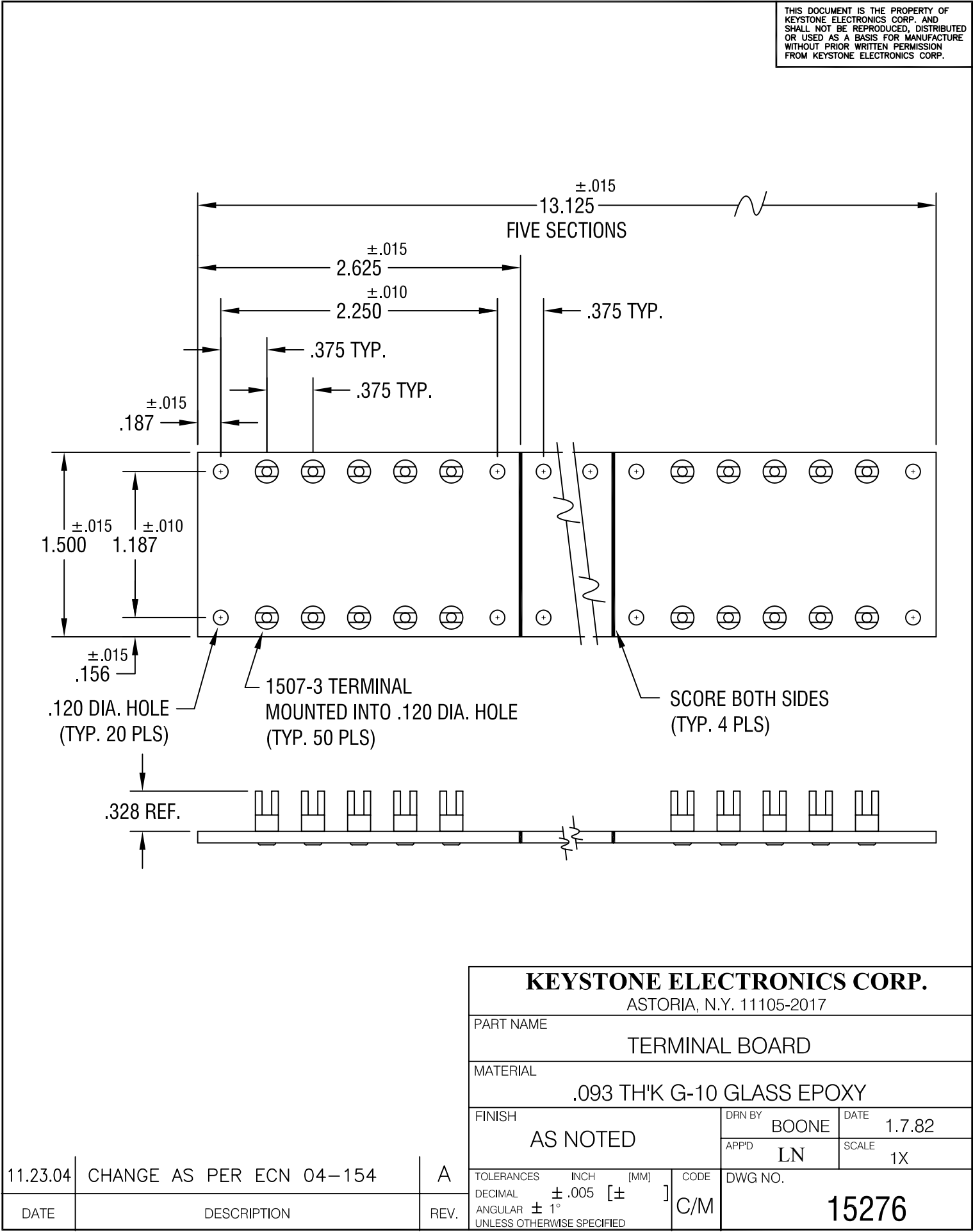
- Reference height: .328 REF.

Annotations:

- "FIVE SECTIONS" indicates the board is divided into five equal segments.
- "1507-3 TERMINAL MOUNTED INTO .120 DIA. HOLE (TYP. 50 PLS)" points to the circular holes on the top surface.
- ".120 DIA. HOLE (TYP. 20 PLS)" points to the circular holes on the bottom surface.
- "SCORE BOTH SIDES (TYP. 4 PLS)" points to vertical score lines on both the top and bottom surfaces.

KEYSTONE ELECTRONICS CORP.			
ASTORIA, N.Y. 11105-2017			
PART NAME	TERMINAL BOARD		
MATERIAL	.093 TH'K G-10 GLASS EPOXY		
FINISH	AS NOTED	DRN BY	BOONE
		APP'D	LN
		DATE	1.7.82
		SCALE	1X
TOLERANCES	INCH [MM]	CODE	DWG NO.
DECIMAL	± .005 [±]	C/M	15276
ANGULAR	± 1°		
UNLESS OTHERWISE SPECIFIED			

11.23.04	CHANGE AS PER ECN 04-154	A
DATE	DESCRIPTION	REV.



THIS DOCUMENT IS THE PROPERTY OF
KEYSTONE ELECTRONICS CORP. AND
SHALL NOT BE REPRODUCED, DISTRIBUTED
OR USED AS A BASIS FOR MANUFACTURE
WITHOUT PRIOR WRITTEN PERMISSION
FROM KEYSTONE ELECTRONICS CORP.

Technical drawing of a terminal board showing top and side views with dimensions and callouts.

Top View Dimensions:

- Overall length: $13.125 \pm .015$
- Section length: $2.625 \pm .015$ (FIVE SECTIONS)
- Section length: $2.250 \pm .010$
- Section width: $.375$ TYP.
- Section width: $.375$ TYP.
- Section width: $.375$ TYP.
- Section width: $.187 \pm .015$
- Section width: $.156 \pm .015$
- Section width: $1.500 \pm .015$
- Section width: $1.187 \pm .010$

Callouts:

- $.120$ DIA. HOLE (TYP. 20 PLS)
- 1507-3 TERMINAL MOUNTED INTO $.120$ DIA. HOLE (TYP. 50 PLS)
- SCORE BOTH SIDES (TYP. 4 PLS)

Side View Dimensions:

- Reference height: $.328$ REF.

KEYSTONE ELECTRONICS CORP.

ASTORIA, N.Y. 11105-2017

PART NAME

TERMINAL BOARD

MATERIAL

.093 TH'K G-10 GLASS EPOXY

FINISH

AS NOTED

DRN BY

BOONE

DATE

1.7.82

APP'D

LN

SCALE

1X

TOLERANCES

INCH

[MM]

CODE

DWG NO.

DECIMAL

$\pm .005$ [\pm]

C/M

ANGULAR $\pm 1^\circ$

UNLESS OTHERWISE SPECIFIED

15276

11.23.04 CHANGE AS PER ECN 04-154

A

DATE

DESCRIPTION

REV.