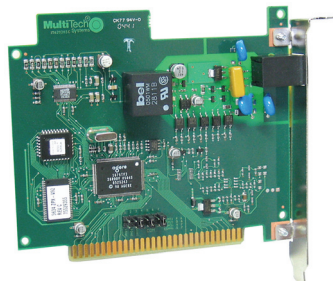


MultiModem® ZPX

V.92 Internal ISA Modem



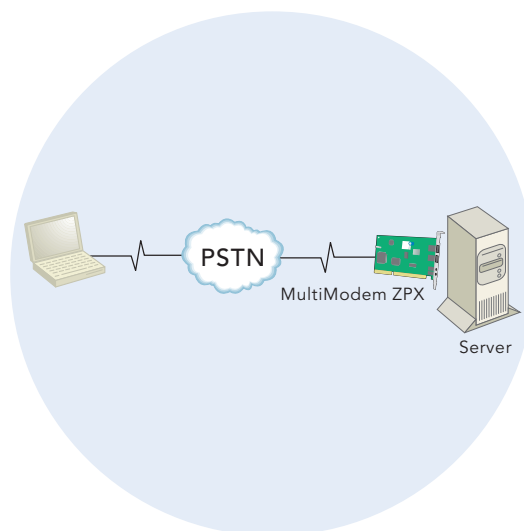
Benefits

- Increased upload speeds
- V.34/33.6K Super G3 Fax
- Global approvals

The MultiModem® ZPX V.92 internal ISA modem is the ideal choice for small to medium-sized businesses that are looking for a remote device management solution. Whether your application need is out-of-band management, troubleshooting or sending updates to a remote management server, the MultiModem ZPX internal modem provides higher speeds and reduces transfer times. It includes a built-in processor to enhance performance and data throughput. And, with V.34/33.6K fax and Error Correction Mode, it can reduce fax transmission time by more than half when compared to traditional fax modems. The MultiModem ZPX internal modem is approved for use in many countries around the world. This means one modem can ship virtually anywhere.

Features

- V.92/56K download speeds and 48K upload speeds when connecting with V.92 servers
- V.44 compression improves data throughput rates
- Class 1.0 and Class 2.1 faxing at speeds to V.34/33.6K bps (Super G3)
- Error Correction Mode (ECM) provides fast and reliable fax transmissions
- Windows and Linux compatibility
- U.S. Caller ID reporting
- Global approvals in many countries for worldwide use
- Telco adapters available for country localization
- Built-in processor that does the work, so your computer doesn't have to
- Remote configuration for centralized setup and management
- DTMF tone detection
- Flash memory for easy updates
- Two-year warranty



Highlights

Increased Upload Speeds. With the V.92 MultiModem ZPX internal modem, you can achieve an upload speed of 48K bps (30% increase over V.90 modems). This higher upstream speed reduces data transfer time for large e-mails with attachments and for ftp site uploads, as well as improves operation for interactive applications.

V.44 Compression. V.44 is a data compression standard that improves the current V.42bis data compression anywhere from 20 to 60 percent, up to as much as 200 percent for certain types of highly compressible data. This compression technique, used by the V.92 MultiModem ZPX internal modem, enables data throughput rates of higher than 300K bps - much faster than today's typical rates of 150 - 200K bps.

Enhanced Fax Features. The MultiModem ZPX internal modem supports V.34 fax and Error Correction Mode providing significant performance and reliability enhancements over previous fax standards. V.34 sends and receives faxes at 33.6K, more than double the speed of the V.17/14.4K fax standard. Error Correction Mode adds reliability while increasing performance of fax transmissions. Together these enhancements increase the performance of the MultiModem ZPX internal modem to levels previously only found in more expensive dedicated fax boards and machines.

Doesn't Bog Down Your Computer. You won't sacrifice computer performance with this controller-based modem. The MultiModem ZPX internal modem does not push processing requests off on your computer; the card does all of the work!

Global Approvals. With the MultiModem ZPX internal modem, you need just one modem for worldwide use. This model has approvals in many countries so you can ship one SKU (stocking unit) virtually anywhere in the world. Telco adapters are available for country localization. Go to www.multitech.com/globalmodem for details.

Comprehensive Service and Support. The Multi-Tech commitment to service means we provide a two-year product warranty and service that includes technical support, 24-hour web site and ftp support.

Specifications

Rates

Data: V.92/56K downloads & 48K upload speeds from V.92 servers; V.90/56K downloads from V.90/K56flex servers; 33.6K bps transfers with other servers
Fax: 33.6K/14.4K bps

Standards

Data: V.92, V.90, enhanced V.34 & below
Error Correction: V.42, ECM
Data Compression: V.44, V.42bis, MNP® Class 5
Fax: V.34, Class 2.1 & Class 1.0, V.17, Group 3, Class 1 & Class 2, Error Correction Mode (ECM)

Bus Type

ISA (supports IRQ's 3, 4, & 5)

Connectors

1 RJ-11

Operating System Support

Windows 98/NT/Me/XP (32-bit)/2000 & Linux

Physical Description

5.5" w × 4.9" h × 0.87" d; 3.1 oz
(14 cm × 12.5 cm × 2.2 cm; 88 g)

Operating Environment

+32° to +120° F (0° to +50° C); 20-90% noncondensing

Certifications

CE Mark
EMC: FCC Part 15 Class B, EN 55022, EN 55024
Safety: cUL, EN 60950, UL 60950
Telecom: CS03, FCC Part 68, TBR21
Other countries also included

Ordering Information

Product	Description	Region
MT5634ZPX-V92	V.92 Data/Fax World Modem (ISA)	Global
Made in Mounds View, MN, U.S.A.		

Trademarks / Registered Trademarks: MultiModem, Multi-Tech, and the Multi-Tech logo: Multi-Tech Systems, Inc. / All other products and technologies are the trademarks or registered trademarks of their respective holders.

World Headquarters
Tel: (763) 785-3500
(800) 328-9717
www.multitech.com

EMEA Headquarters
Multi-Tech Systems (EMEA)
United Kingdom
Tel: +(44) 118-959 7774

Multi-Tech Systems (EMEA)
France
Tel: +(33) 1 49 19 22 06