

PLEASE CHECK WWW.MOLEX.COM FOR LATEST PART INFORMATION

Part Number: [1703403520](#)
Status: **Active**
Overview: [Impact™ Backplane Connector and Cable Assembly System](#)
Description: [Impact™ 85 Ohm Plus 4 Pair, Right Angle Daughtercard, Left Guided, 10 Columns, 120 Circuits, Plated Through Hole Dimension 0.39mm, Keying Orientation E, Lead Free](#)

Documents:

[3D Model](#) [Application Specification AS-76060-990 \(PDF\)](#)
[Drawing \(PDF\)](#) [RoHS Certificate of Compliance \(PDF\)](#)
[Product Specification PS-170540-999 \(PDF\)](#)

Agency Certification

UL E29179

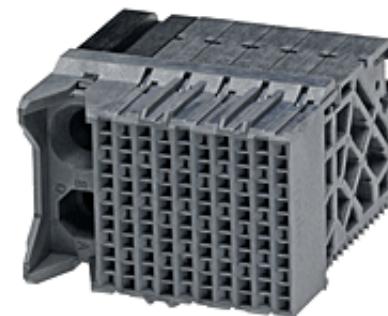
General

Product Family [Backplane Connectors](#)
Series [170340](#)
Application [Conventional, Coplanar, Daughtercard](#)
Component Type [PCB Receptacle](#)
Overview [Impact™ Backplane Connector and Cable Assembly System](#)
Product Name [Impact™](#)
UPC [887191148694](#)

Physical

Circuits (Loaded) 120
Circuits (maximum) 120
Color - Resin Gray
Durability (mating cycles max) 200
First Mate / Last Break No
Flammability 94V-0
Guide to Mating Part Yes
Keying to Mating Part Yes
Material - Metal [High Performance Alloy \(HPA\)](#)
Material - Plating Mating Gold
Material - Plating Termination Tin
Material - Resin [High Temperature Thermoplastic](#)
Net Weight 17.349/g
Number of Columns 10
Number of Pairs 4
Number of Rows 12
Orientation [Right Angle](#)
PC Tail Length 1.20mm
PCB Locator No
PCB Retention None
PCB Thickness - Recommended 1.00mm
Packaging Type [Tray](#)
Pitch - Mating Interface 1.35mm, 1.90mm
Pitch - Termination Interface 1.35mm, 1.90mm
Plating min - Mating 0.762µm
Polarized to PCB No
Stackable No
Surface Mount Compatible (SMC) No
Temperature Range - Operating -55°C to +85°C
Termination Interface: Style [Through Hole - Compliant Pin](#)

Electrical



Series image - Reference only

EU ELV

Not Relevant

EU RoHS

Compliant

China RoHS

REACH SVHC

Contains SVHC(2014 December 17): No

Halogen-Free

Status

Low-Halogen

Need more information on product environmental compliance?

Email productcompliance@molex.com
Please visit the [Contact Us](#) section for any non-product compliance questions.

China ROHS

Green Image

ELV

Not Relevant

Search Parts in this Series

[170340](#) Series

Mates With

[170335](#) Impact™ 85 Ohm Plus Vertical Header

Application Tooling | FAQ

Tooling specifications and manuals are found by selecting the products below. Crimp Height Specifications are then contained in the Application Tooling Specification document.

Global

Description

Product #

Daughter Card

[0622018641](#)

Module Installation

Press-In Tool

Current - Maximum per Contact	0.75A
Data Rate	25.0 Gbps
Impedance	85#
Shield Type	N/A
Shielded	No
Voltage - Maximum	30V AC (RMS)/DC

Solder Process Data

Lead-freeProcess Capability	N/A
-----------------------------	-----

Material Info**Reference - Drawing Numbers**

Application Specification	AS-76060-990
Electrical Model Document	EE-170340-001
Product Specification	PS-170540-999
S-Parameter Model	SP-170340-001
Sales Drawing	SD-170340-0002
Symbol/Footprint Data	SYM-170340-3520

This document was generated on 07/01/2015

PLEASE CHECK WWW.MOLEX.COM FOR LATEST PART INFORMATION