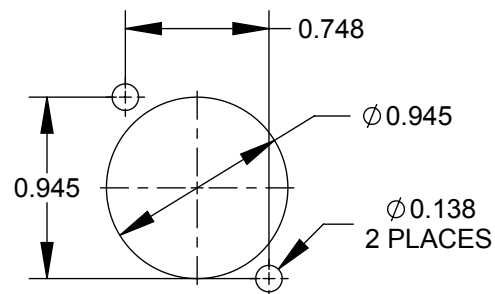
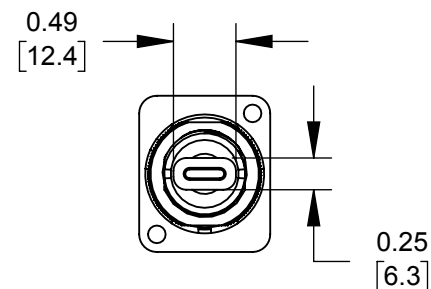
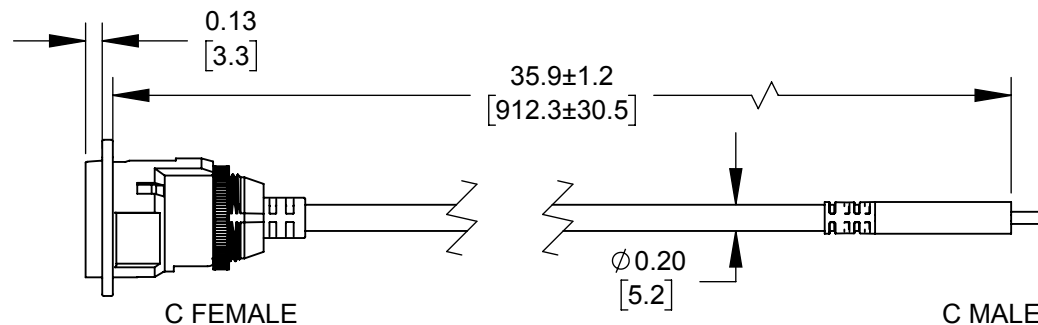
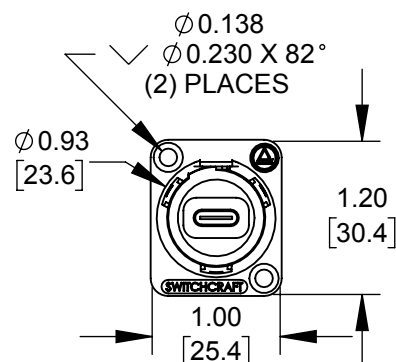


1. MATERIALS:
INSERT OVERMOLD - THERMOPLASTIC,
BLACK.
RETAINING NUT - BRASS, NICKEL PLATED.
HOUSING - ZINC ALLOY.
CABLE- BLACK PVC.
2. DATA RATE- 5Gbps. FULLY MATED.
3. CURRENT- 5A.
4. TWO #4-40 MOUNTING SCREWS
INCLUDED.
5. THIS PRODUCT IS RoHS COMPLIANT.



A black cable with a circular connector on one end and a USB-A connector on the other. The circular connector has a central pin and a surrounding ring. The USB-A connector is standard in shape and size. The cable is coiled in the background.



PART NUMBER	HOUSING FINISH
EHUSB31CFCM	NICKEL
EHUSB31CFCMB	BLACK CHROME

CUSTOMER DRAWING

					<div>UNLESS OTHERWISE SPECIFIED</div> <div>1. ALL DIMENSIONS IN INCHES [mm]</div> <div>- TWO PLACE DECIMALS ±0.02 [0.5]</div> <div>- THREE PLACE DECIMALS ±0.005 [0.13]</div>	THIS DRAWING DESCRIBES A DESIGN CONSIDERED PROPRIETARY IN NATURE, DEVELOPED AND MANUFACTURED BY SWITCHCRAFT INC. AND IS RELEASED ON A CONFIDENTIAL BASIS FOR IDENTIFICATION PURPOSES ONLY.									
						SIZE *	WIDTH *		MULT *		LBS/M *		TEMPER *		
						FINISH *						MATERIAL *			
						SPEC No. *						SPEC No. *			
						FIRST USED ON *				SCALE 1:8		<div>Switchcraft®</div>			
						DATE DRAWN	BY	CHKD	APVD						
0A	PRELIMINARY	11/30/18	NS	SRC		11/30/18	NS	11/30/18	11/30/18		SHEET 1 OF 1				
REV	ECO NUMBER	DATE	BY	APVD	NAME						PART No.			REV	
REVISIONS					DO NOT SCALE DRAWING		USB EXTENSION CABLE CF - CM				EHUSB31CC...SERIES			0A	

SolidWorks CAD File

