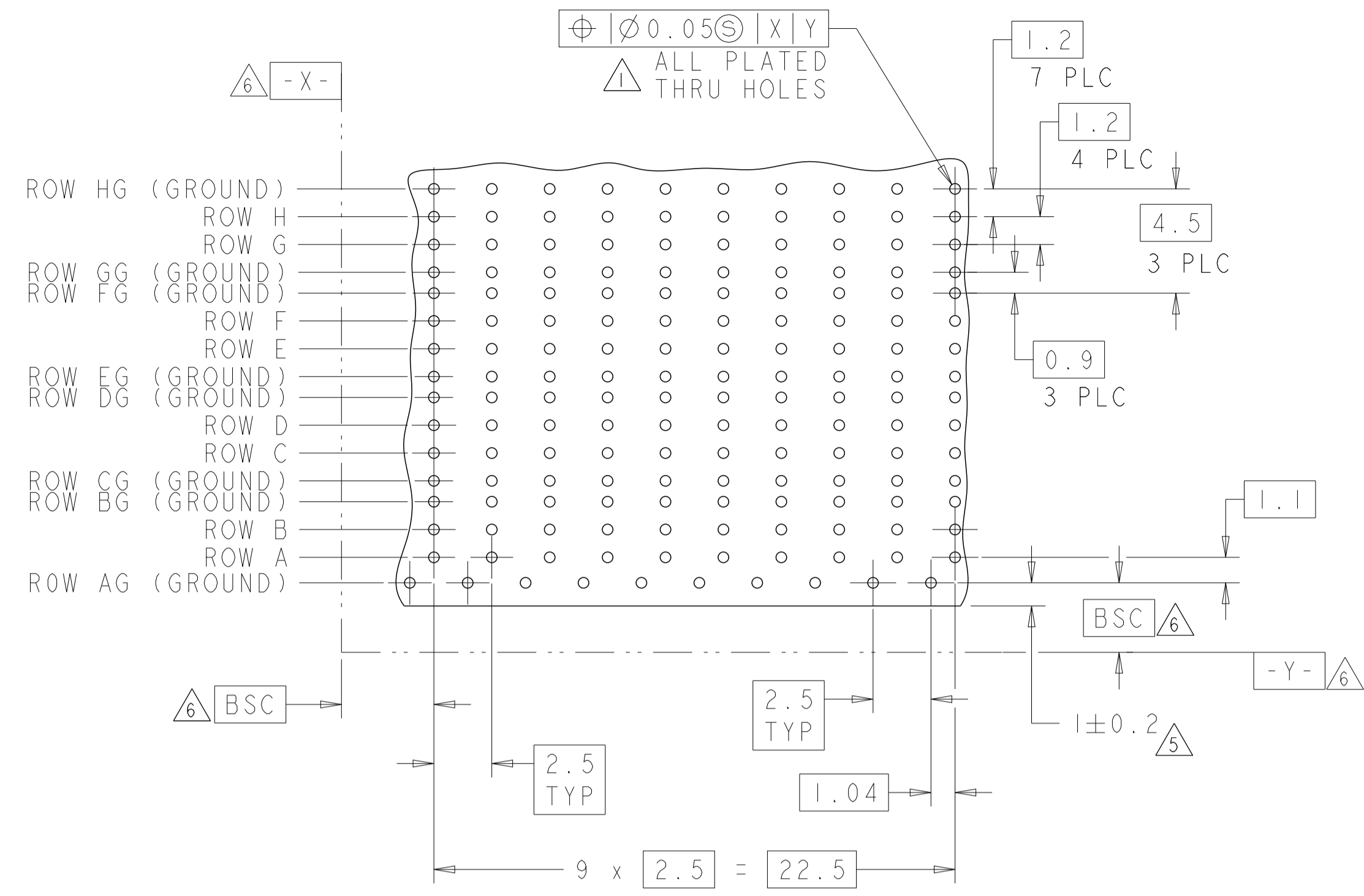
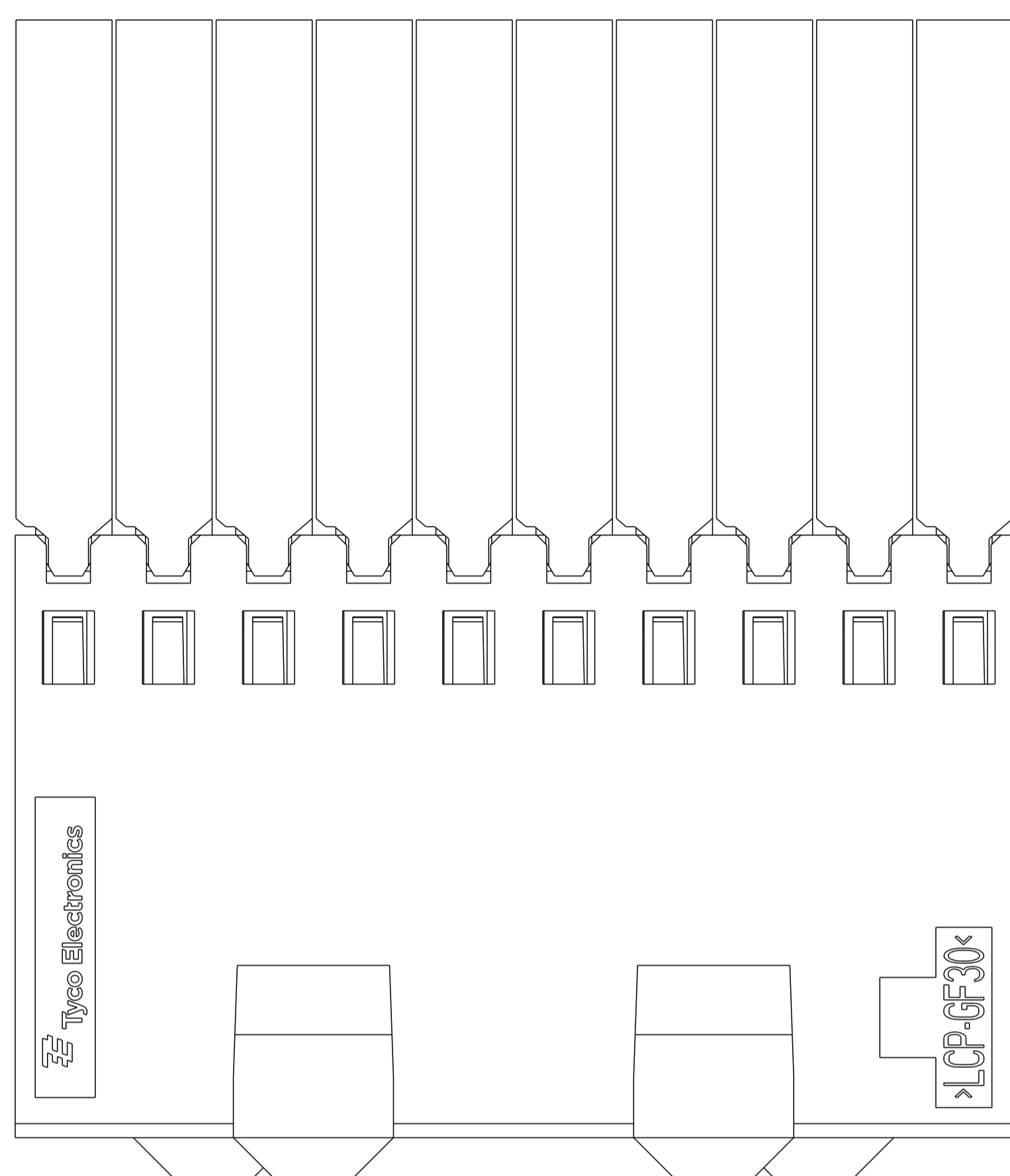
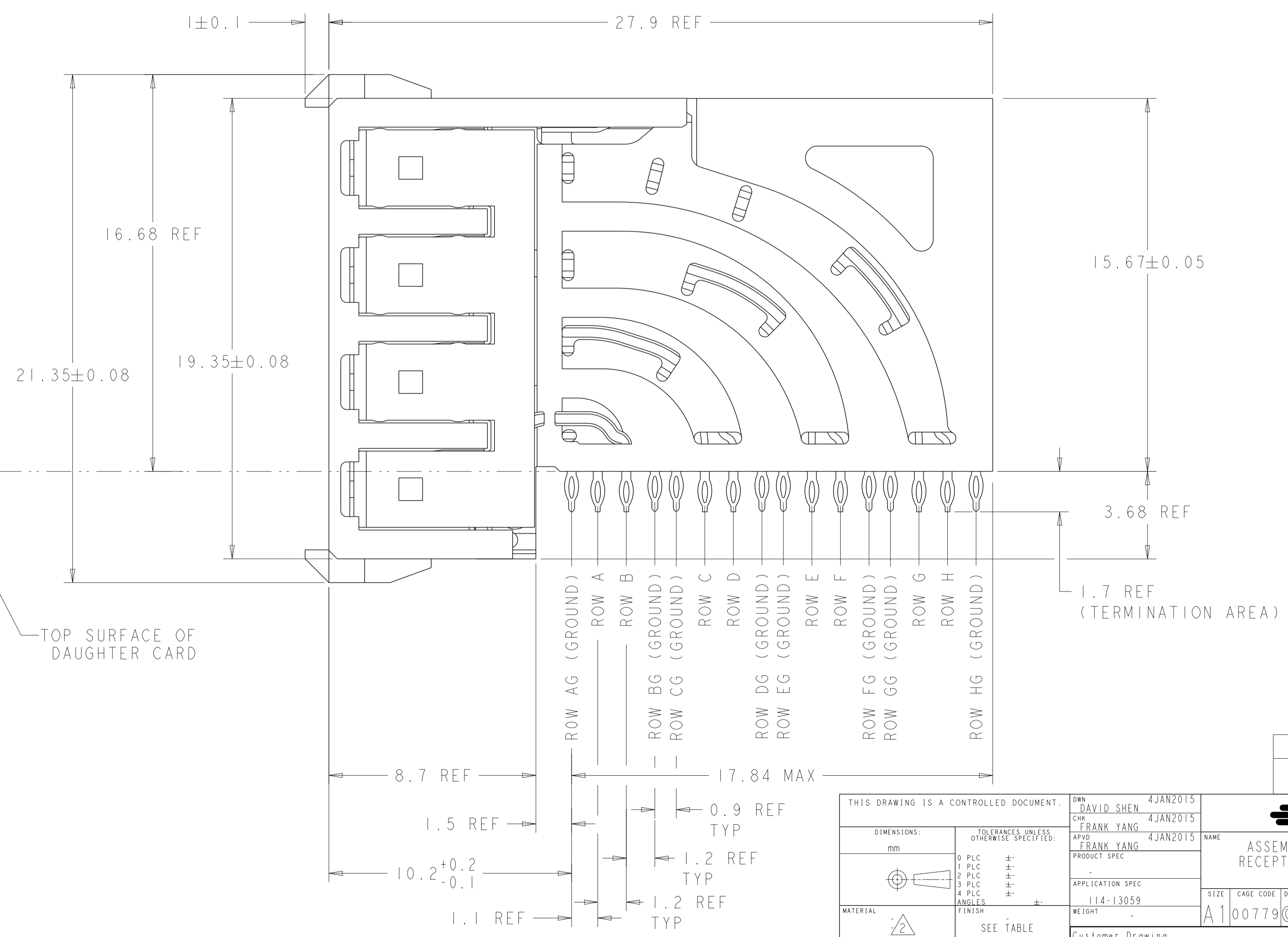
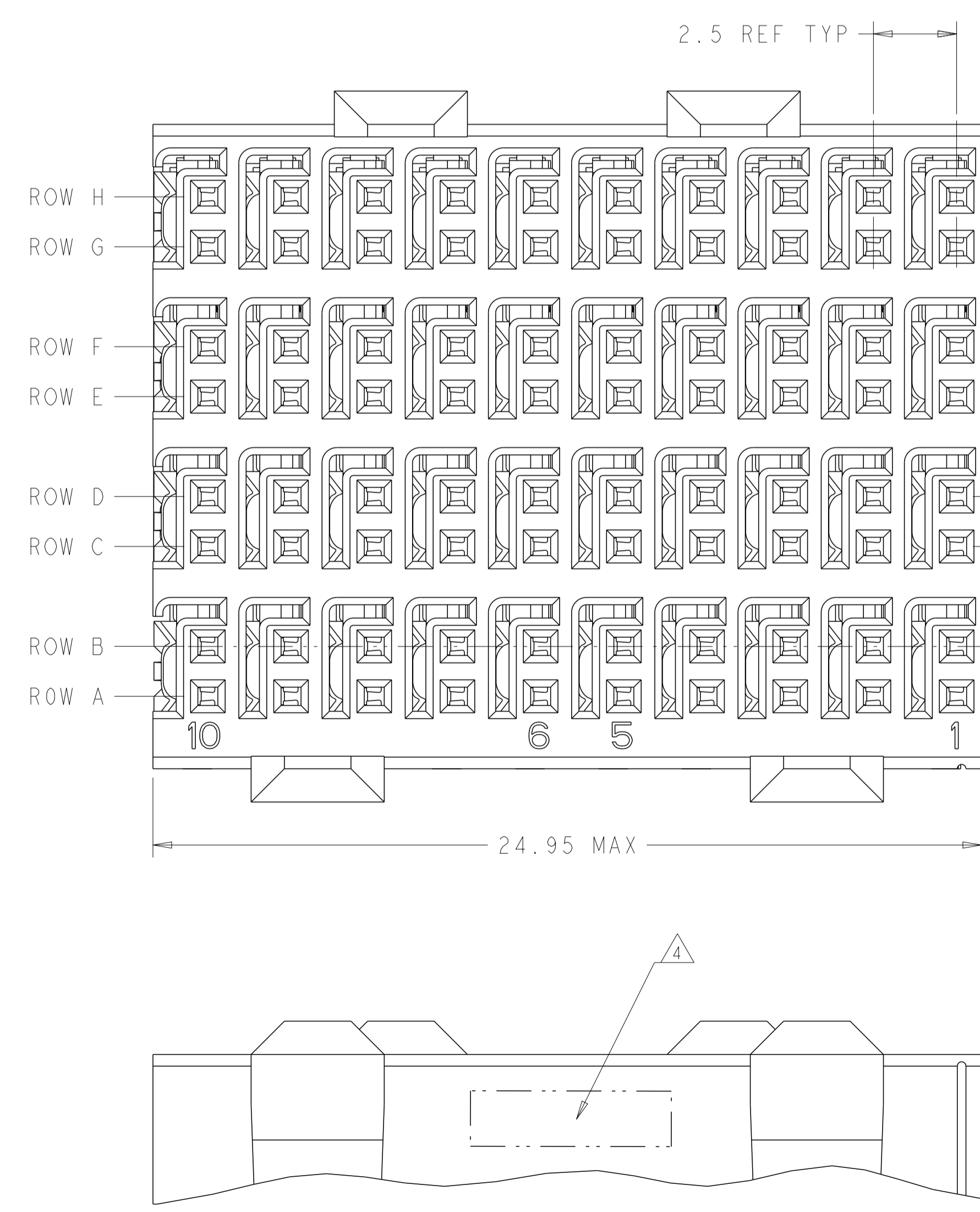


LOC		DIST		REVISIONS			
AD	00	P	LTN	DESCRIPTION	DATE	DMN	APVD
		A		INITIAL RELEASE	19MAR2015	D.S	F.Y



- 1. REFERENCE APPLICATION SPEC 114-13059 FOR RECOMMENDED PLATED THRU HOLE DIAMETER AND PLATING THICKNESSES.
- 2. MATERIAL:  
 SHIELD - PHOSPHOR BRONZE  
 CONTACT - COPPER-NICKEL-SILICON  
 HOUSING, CHICKLET AND CHICKLET COVER - GLASS FILLED POLYESTER, UL 94V-0 RATED.
- 3. FINISH: CONTACT AND SHIELD MATING AREA:  
 MEETS THE PERFORMANCE REQUIREMENTS OF TYCO ELECTRONICS PRODUCT SPECIFICATION, 108-2055-1; BASED ON TELCORDIA GR-1217-CORE, APPLICATIONS IN UNCONTROLLED ENVIRONMENTS.  
 COMPLIANT PIN AREA:  
 0.5µm MIN MATTE TIN OVER BASE PLATING.
- 4. CONNECTOR MARKED WITH PART NUMBER AND DATE CODE IN APPROXIMATE AREA SHOWN.
- 5. DIMENSION APPLIES TO CENTERLINE OF THRU HOLE.
- 6. DATUMS AND BASIC DIMENSIONS ESTABLISHED BY CUSTOMER.
- 7. CONTACT AREA LUBRICATED WITH BELLCORE APPROVED LUBRICANT. TECHNICAL REFERENCE: GR-1217-CORE, ISSUE 1, NOVEMBER 1995.

RECOMMENDED PC BOARD LAYOUT,  
 DAUGHTER BOARD,  
 COMPONENT SIDE SHOWN  
 SCALE 5:1



THIS DRAWING IS A CONTROLLED DOCUMENT.		DMN DAVID SHEN 4JAN2015	2170903-1
DIMENSIONS: mm		CHK FRANK YANG 4JAN2015	FINISH PART NUMBER
TOLERANCES UNLESS OTHERWISE SPECIFIED:		APVD FRANK YANG 4JAN2015	TE Connectivity
0 PLC	±	NAME	ASSEMBLY, Z-Pack HM-eZD+, RECEPTACLE, 4 PAIR, 10 COLUMN
1 PLC	±	PRODUCT SPEC	
2 PLC	±	APPLICATION SPEC	
3 PLC	±	114-13059	SIZE CAGE CODE DRAWING NO RESTRICTED TO
4 PLC	±	WEIGHT	A100779C=2170903
ANGLES	±	Customer Drawing	SCALE SHEET OF REV A