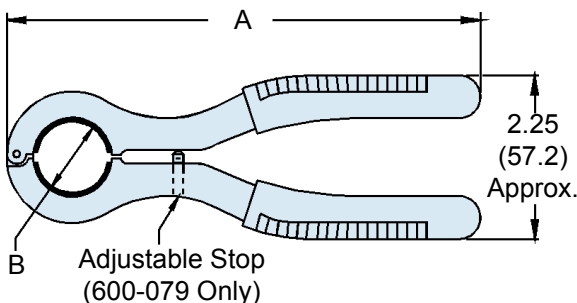
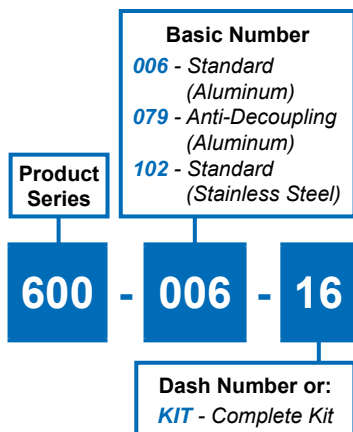


# 600-006, 600-079 & 600-102 Circular Backshell Assembly Wrenches and Replacement Insert Pads



### APPLICATION NOTES

- Grips are covered in vinyl.
- Metric dimensions (mm) are indicated in parentheses.

### 600-006 and 600-102 (Standard Coupling)

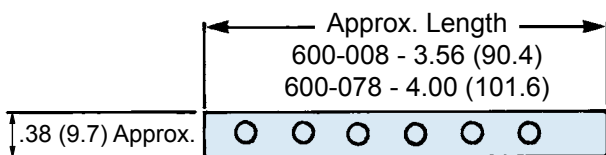
| Dash No. | Shell Size Ref. | A Ref.       | B Ref.       |
|----------|-----------------|--------------|--------------|
| 08       | 08/09           | 6.50 (165.1) | .617 (15.7)  |
| 10       | 10/11           | 6.50 (165.1) | .734 (18.6)  |
| 12       | 12/13           | 6.50 (165.1) | .858 (21.8)  |
| 14       | 14/15           | 6.50 (165.1) | .984 (25.0)  |
| 16       | 16/17           | 6.50 (165.1) | 1.112 (28.2) |
| 18       | 18/19           | 7.00 (177.8) | 1.198 (30.4) |
| 20       | 20/21           | 7.00 (177.8) | 1.323 (33.6) |
| 22       | 22/23           | 7.00 (177.8) | 1.448 (36.8) |
| 24       | 24/25           | 7.00 (177.8) | 1.573 (40.0) |
| 28       | 28              | 7.00 (177.8) | 1.969 (50.0) |

### 600-079 and 600-103 (Anti-Decoupling)

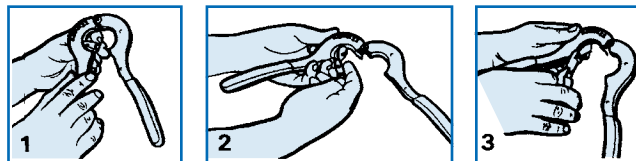
| Dash No. | Shell Size Ref. | A Ref.       | B Ref.       |
|----------|-----------------|--------------|--------------|
| 01       | 08/09           | 7.38 (187.5) | .659 (16.7)  |
| 02       | 10/11           | 7.50 (190.5) | .783 (19.9)  |
| 03       | 12/13           | 7.50 (190.5) | .906 (23.0)  |
| 04       | 14/15           | 7.50 (190.5) | 1.035 (26.3) |
| 05       | 16/17           | 7.50 (190.5) | 1.140 (29.0) |
| 06       | 18/19           | 7.75 (196.9) | 1.260 (32.0) |
| 07       | 20/21           | 8.00 (203.2) | 1.383 (35.1) |
| 08       | 22/23           | 8.25 (209.6) | 1.510 (38.4) |
| 10       | 24/25           | 8.25 (209.6) | 1.630 (41.4) |

Consult Factory for Larger Sizes

## Replacement Insert Pads



- 600-008-01 Fits standard coupling series sizes 08 through 24, color black.
- 600-078-01 Fits anti-decoupling coupling sizes 09 through 23, color red.
- 600-078-02 Fits anti-decoupling coupling size 25, color red.



### Replacing Insert Pads in Backshell Assembly Tools

- The urethane pad strips are mechanically retained without adhesive. To remove, grasp an edge of the strip and pull loose from tool.
- Beginning with retaining hole adjacent to assembly tool hinge, insert first retaining knob on strip into hole. Continue inserting knobs on pad strip into remaining holes on tool.
- Using side-cutters or scissors, trim end of pad strip flush with metal surface of assembly tool. Retain remainder of strip for replacement in other size assembly tools.