

**NOTES:**

1. DCC-US3AB-180 SHOWN IN EXPLODED VIEW. (USB 3.0 TYPE A WITH QUICK CONNECT COUPLING.)

**MATERIALS:**

PLUG HOUSING: THERMOPLASTIC  
SEALING NUT, COUPLING RING: THERMOPLASTIC  
SEALING RING: ELASTOMER  
O-RING: ELASTOMER  
INSERT: THERMOPLASTIC  
USB 3.0 PLUG:  
INSULATOR: THERMOPLASTIC, BLUE  
CONTACTS: COPPER ALLOY, GOLD PLATED  
SHIELD: STEEL, NICKEL PLATED

**ELECTRICAL:**

CONTACT RESISTANCE: 50 MILLIOHMS MAX  
CONTACT CURRENT RATING: 1.0A DC MAX  
INSULATION RESISTANCE: 100 MEGAOHMS MIN  
WITHSTANDING VOLTAGE: 750V AC FOR 1 MINUTE

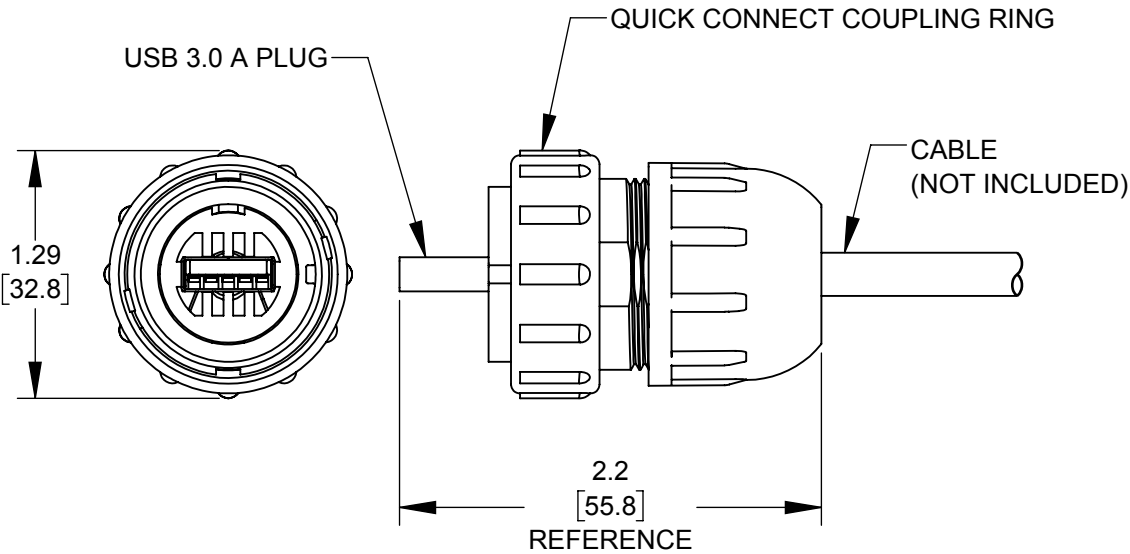
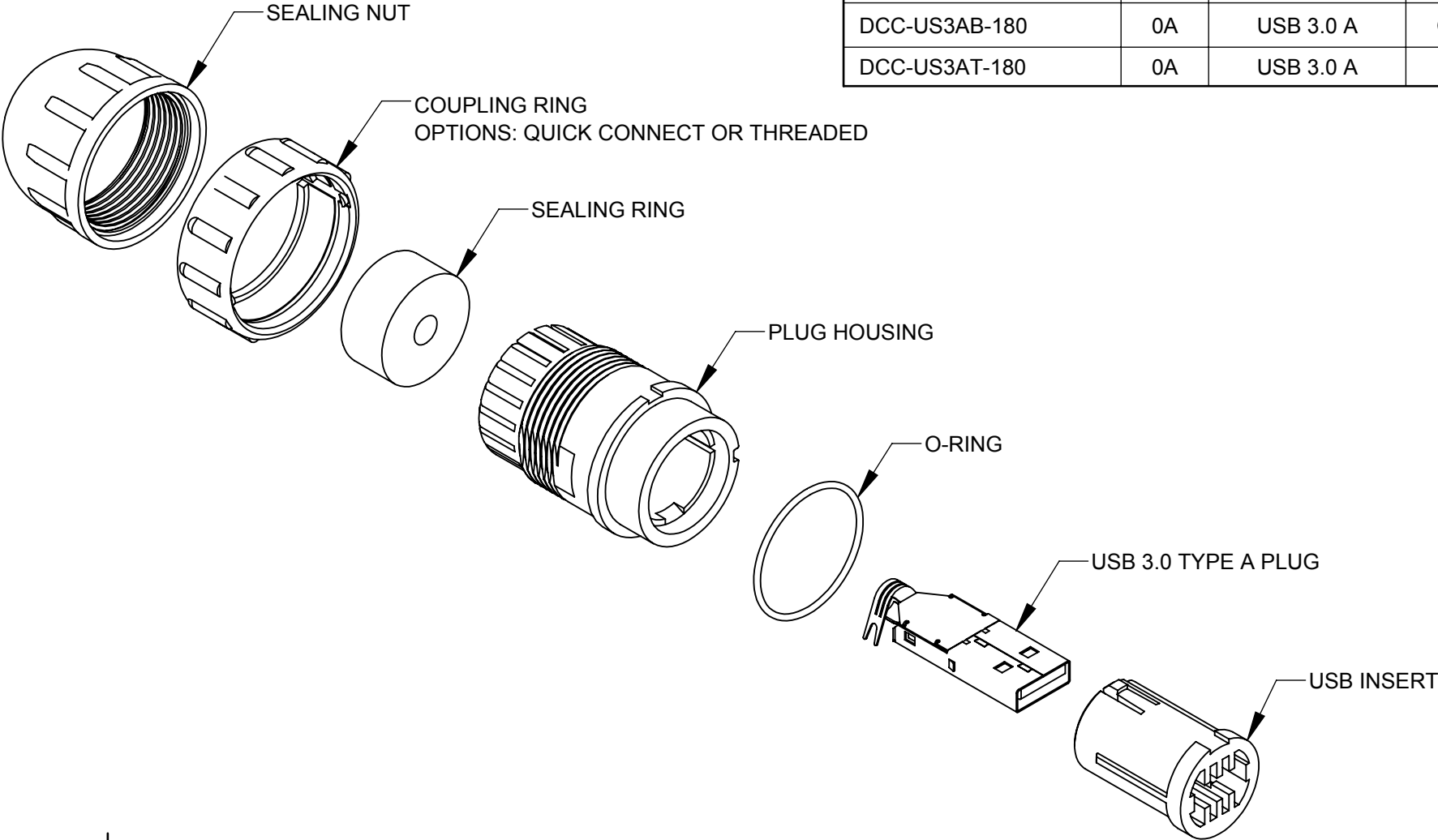
**PRODUCT RATING:**

IP67 & IP68, NEMA 250 (6P) WHEN MATED  
USB A PLUG: USB 3.0

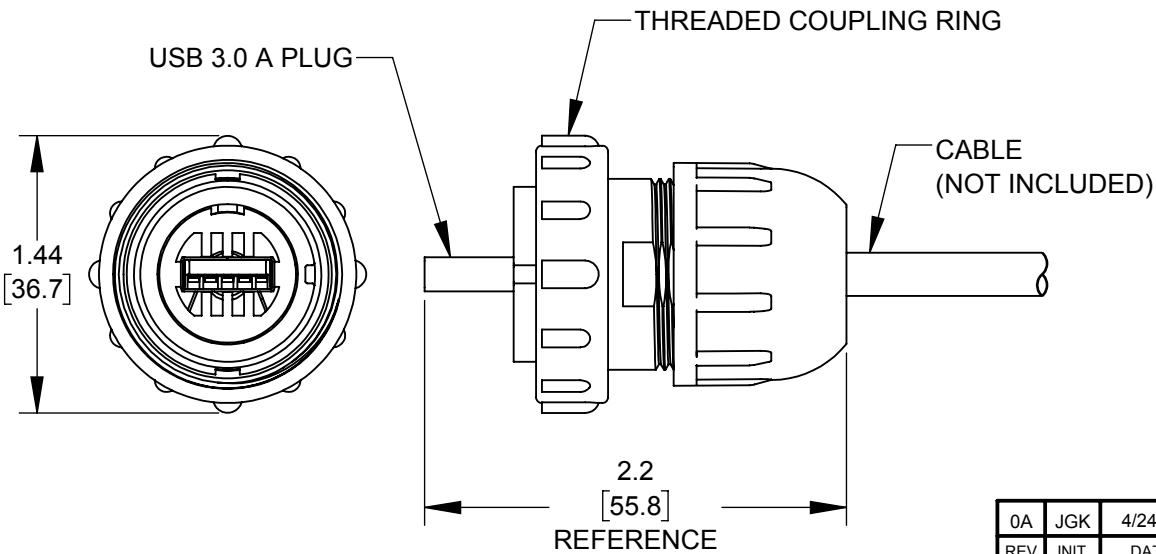
**OTHER:**

OPERATING TEMPERATURE: -25°C TO +80°C (-13°F TO +176°F)  
RECOMMENDED CABLE TYPE: SOLID OR STRANDED CONDUCTORS  
OUTER CABLE O.D. RANGE:  
PRODUCT 180 SERIES: 0.171-0.208 [4.34mm-5.28mm]

PART NUMBER	PART REV	USB TYPE	COUPLING TYPE
DCC-US3AB-180	0A	USB 3.0 A	QUICK CONNECT
DCC-US3AT-180	0A	USB 3.0 A	THREADED



**DCC-US3AB-180**  
USB 3.0 TYPE A WITH QUICK CONNECT COUPLING




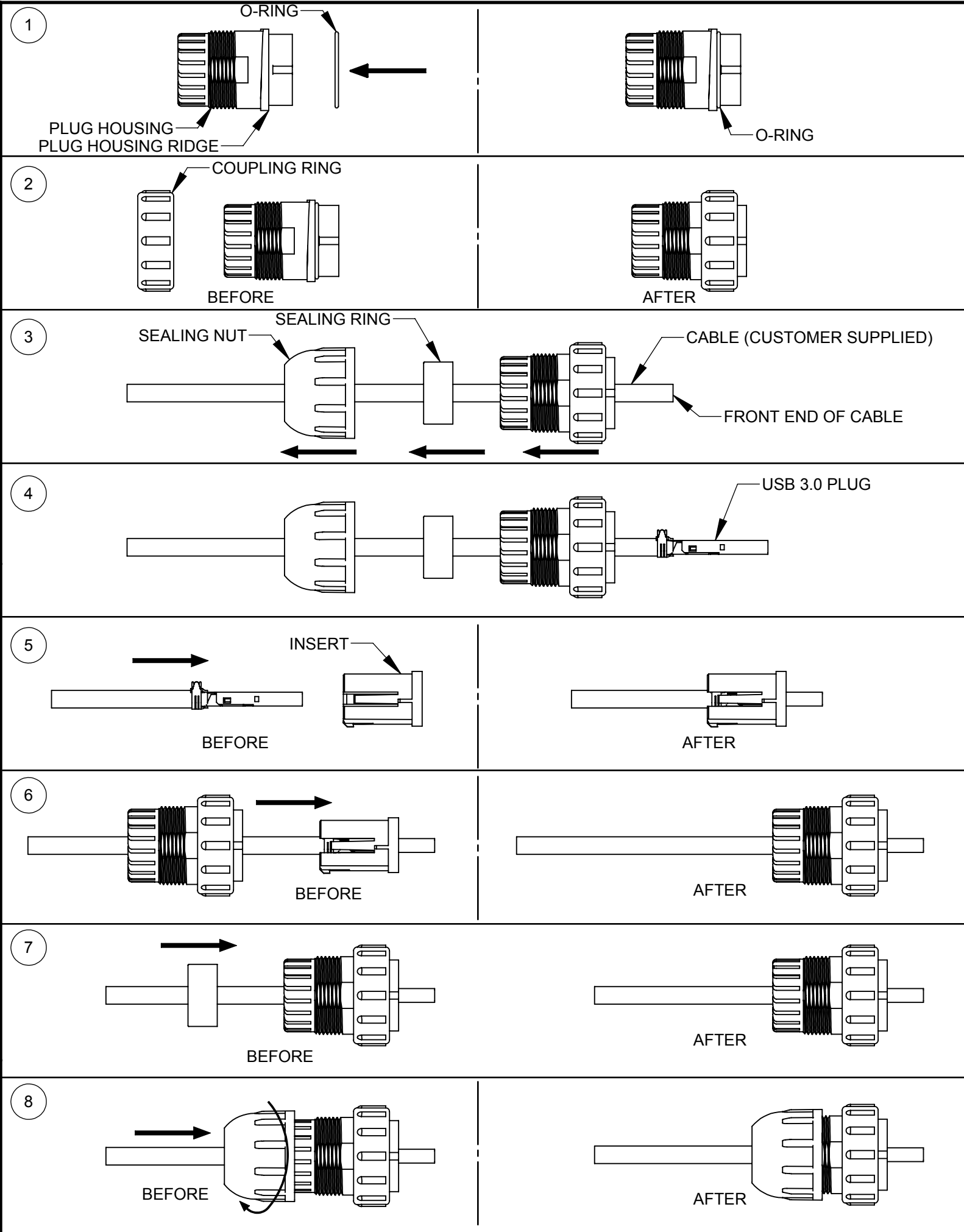
**DCC-US3AT-180**  
USB 3.0 TYPE A WITH THREADED COUPLING

DIMENSIONS IN BRACKET [ ] ARE METRIC.

**RoHS COMPLIANT**

**CUSTOMER DRAWING**

0A		JGK	4/24/17		DRAWING CREATED FOR PROJECT #12012.							
REV.		INIT.		DATE		DESCRIPTION						
<div>ALL INFORMATION ILLUSTRATED IS THE PROPERTY OF "CONXALL CORPORATION." UNAUTHORIZED DUPLICATION OR DISTRIBUTION OF THIS DOCUMENT IS PROHIBITED.</div>						ORIG. DRAWN BY:		DATE:		<div></div> <div>601 E. WILDWOOD VILLA PARK, IL 60181</div>		
						JGK		4/24/17				
<div>ALL UNITS ARE IN FEET, INCHES, FRACTION OF INCHES AND DECIMALS.</div> <div>UNLESS OTHERWISE SPECIFIED TOLERANCES: 3 PLACE DECIMALS ±.005 ANGLES ±1° FRACTIONS ±1/16</div> <div>▷ = CRITICAL CHARACTERISTIC FLAG PER SPEC. XXXX</div>						CHECKED BY:						
<div>▷</div>						APPROVED BY:		TITLE:				
								INDUSTRIAL USB 3.0 A PLUG FIELD INSTALLABLE DATA-CON-X				
						SCALE		SIZE		SHEET		
						NTS		B		1 OF 3		
FILE: DCC-US3AX SERIES_CD						DIRECTORY:		PART		CUSTOMER: STANDARD PRODUCT		
DCC-US3AX SERIES_CD						SLW		NUMBER:				
								DCC-US3AX-180 SERIES		REV 0A		

**ASSEMBLY INSTRUCTIONS:**

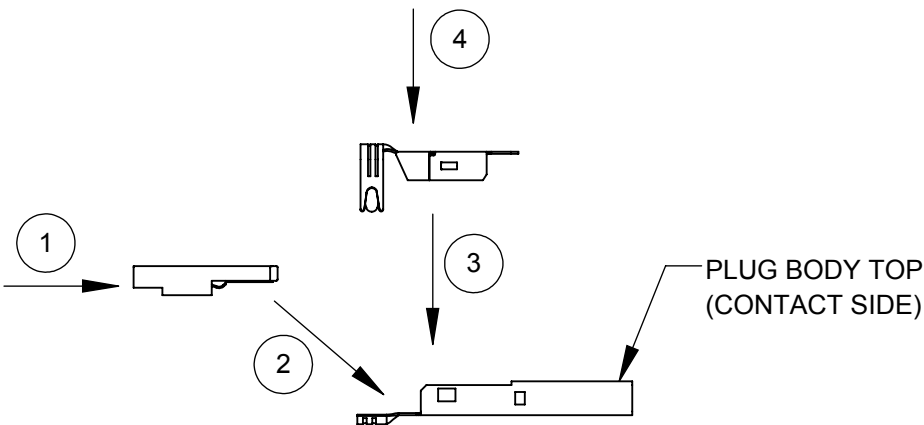
1. SLIDE THE O-RING ONTO THE FRONT END OF THE PLUG HOUSING UNTIL IT SEATS UP AGAINST THE RIDGE OF THE PLUG HOUSING.
2. SLIDE THE COUPLING RING OVER THE PLUG HOUSING.  
NOTE: MAKE SURE THE FRONT OF THE COUPLING RING CAN SLIDE PAST THE RIDGE ON THE PLUG HOUSING. IF NOT, IT IS INSERTED THE WRONG WAY.
3. SLIDE THE SEALING NUT, SEALING RING, AND PLUG HOUSING/COUPLING RING OVER THE FRONT END OF THE CABLE IN THE FOLLOWING ORDER:  
1ST. SEALING NUT.  
2ND. SEALING RING.  
3RD. PLUG HOUSING/COUPLING RING.
4. TERMINATE THE USB PLUG TO THE CABLE.  
NOTE: SEE FIGURE 1 FOR TERMINATION GUIDE.  
SEE FIGURE 2 FOR RECOMMENDED STRIPPING DETAIL.  
SEE FIGURE 4 FOR TYPICAL USB 3.0 WIRING ASSIGNMENT.
5. SLIDE THE USB PLUG INTO THE BACK END OF THE INSERT UNTIL IT SNAPS INTO PLACE.  
NOTE: SEE FIGURE 5 FOR INSERT AND PLUG ALIGNMENT.
6. SLIDE THE INSERT/USB PLUG INTO THE FRONT END OF THE PLUG HOUSING UNTIL IT SNAPS INTO PLACE.
7. PUSH THE SEALING RING INTO THE REAR OF THE PLUG HOUSING.  
NOTE: NO PART OF THE SEALING RING SHOULD EXTEND PAST THE REAR OF THE PLUG HOUSING.
8. SCREW THE SEALING NUT ONTO THE PLUG HOUSING.

**CUSTOMER DRAWING**

0A		JGK	4/24/17		SEE PAGE 1.					
REV.		INIT.		DATE		DESCRIPTION				
ALL INFORMATION ILLUSTRATED IS THE PROPERTY OF "CONXALL CORPORATION." UNAUTHORIZED DUPLICATION OR DISTRIBUTION OF THIS DOCUMENT IS PROHIBITED.					ORIG. DRAWN BY:		DATE:			
					JGK		4/24/17			
ALL UNITS ARE IN FEET, INCHES, FRACTION OF INCHES AND DECIMALS.  UNLESS OTHERWISE SPECIFIED TOLERANCES: 3 PLACE DECIMALS ±.005 ANGLES ±1° FRACTIONS ±1/16  ▷ = CRITICAL CHARACTERISTIC FLAG PER SPEC. XXXX					CHECKED BY:		<div>conxall</div> <div>601 E. WILDWOOD VILLA PARK, IL 60181</div>			
					APPROVED BY:		TITLE:			
							INDUSTRIAL USB 3.0 A PLUG FIELD INSTALLABLE DATA-CON-X CUSTOMER: STANDARD PRODUCT			
		SCALE		SIZE		SHEET		PART NUMBER: DCC-US3AX-180 SERIES		
		NTS		B		2 OF 3				
		FILE:		DIRECTORY:		REV 0A				
		DCC-US3AX SERIES_CD		SLW						

**RoHS COMPLIANT**

FIGURE 1



USB ASSEMBLY INSTRUCTIONS

- 1. SOLDER THE CABLE WIRES TO THE INSULATOR BODY. SEE FIGURE 2 FOR RECOMMENDED CABLE STRIPPING DETAIL AND FIGURE 3 FOR PINOUT. FIGURE 4 SHOWS THE USB 3.0 TYPICAL WIRING ASSIGNMENT.
- 2. PLACE THE INSULATOR BODY ASSEMBLY INTO THE FRONT SHELL AND PUSH FORWARD UNTIL IT SITS FIRMLY INTO THE FRONT SHELL.
- 3. SNAP THE BACK SHELL ONTO THE FRONT SHELL.
- 4. CRIMP THE BACK SHELL CLAMP AROUND THE CABLE JACKET.

FIGURE 2

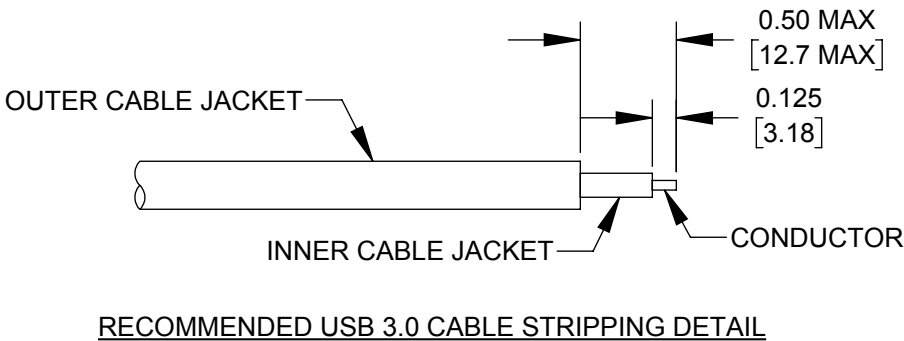


FIGURE 3

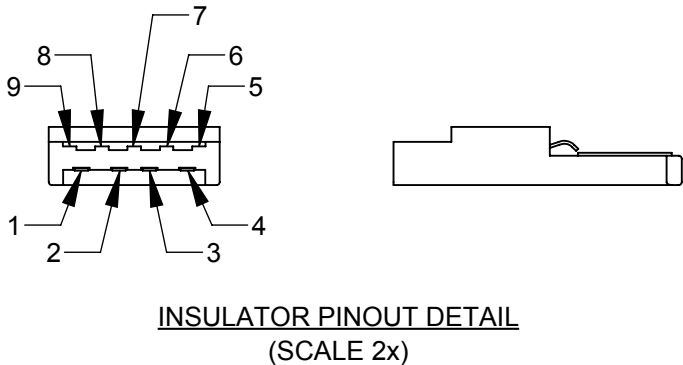
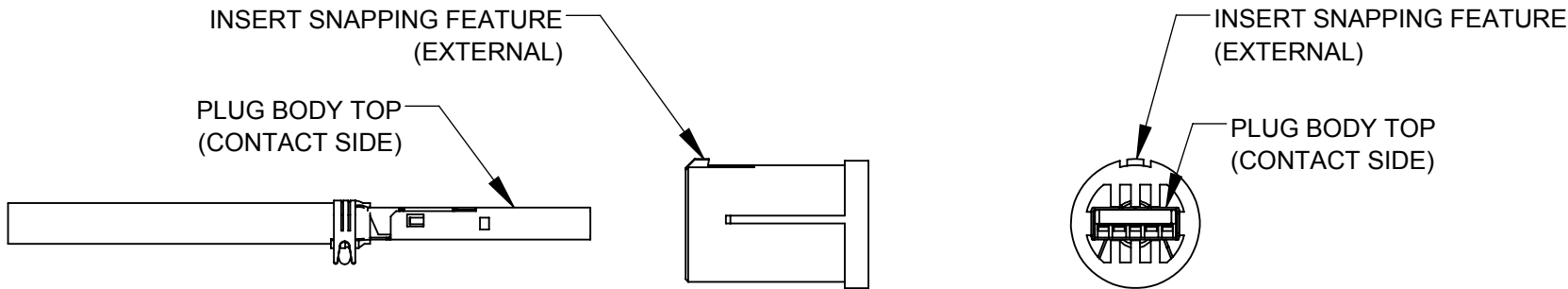


FIGURE 4

TYPICAL USB 3.0 A WIRING	
PIN	CABLE COLOR
1	RED
2	WHITE
3	GREEN
4	BLACK
5	BLUE
6	YELLOW
7	DRAIN WIRE
8	PURPLE
9	ORANGE
SHIELD	BRAID

FIGURE 5



THE PLUG BODY TOP AND THE INSERT EXTERNAL FEATURE MUST BE ALIGNED.

CUSTOMER DRAWING

RoHS COMPLIANT

0A		JGK	4/24/17	SEE PAGE 1.					
REV.		INIT.	DATE	DESCRIPTION					
<div>ALL INFORMATION ILLUSTRATED IS THE PROPERTY OF "CONXALL CORPORATION." UNAUTHORIZED DUPLICATION OR DISTRIBUTION OF THIS DOCUMENT IS PROHIBITED.</div> <div>ALL UNITS ARE IN FEET, INCHES, FRACTION OF INCHES AND DECIMALS.</div> <div>UNLESS OTHERWISE SPECIFIED TOLERANCES: 3 PLACE DECIMALS ±.005 ANGLES ±1° FRACTIONS ±1/16</div> <div>▷ = CRITICAL CHARACTERISTIC FLAG PER SPEC. XXXX</div>				<div>ORIG. DRAWN BY: DATE: JGK 4/24/17</div> <div>CHECKED BY:</div>		<div>conxall</div> <div>601 E. WILDWOOD VILLA PARK, IL 60181</div>			
				APPROVED BY:				TITLE: INDUSTRIAL USB 3.0 A PLUG FIELD INSTALLABLE DATA-CON-X	
		SCALE NTS		SIZE B		SHEET 3 OF 3		CUSTOMER: STANDARD PRODUCT	
FILE: DCC-US3AX SERIES_CD				DIRECTORY: SLW		PART NUMBER: DCC-US3AX-180 SERIES			
						REV 0A			