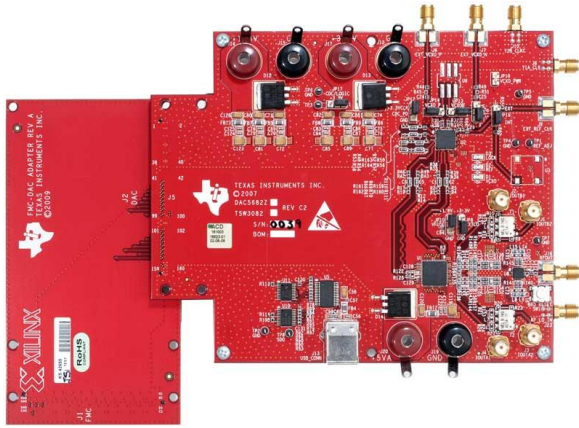


High Speed DAC to FMC (Xilinx) Header Adapter

Card Status: ACTIVE

FMC-DAC-ADAPTER

Description



The FMC-DAC-Adapter passive interconnect board enables the output of TI's LVDS input high speed DACs to be directly connected to a standard FMC interconnect header, a typical input on the latest Xilinx FPGA EVMs. This enables users of TI's high speed DAC EVMs to directly interface to Xilinx FPGA's for prototyping purposes, saving the time and cost of producing a custom prototyping board.

Features

- Enables direct connection to TI high speed DAC EVM LVDS inputs from the FMC standard header

What's Included

- [SLOR102, FMC-DAC-ADAPTER Physical Design Database Rev D Board \(Rev. A\)](#)