

8 7 6 5 4 3 2 1

D

D

C

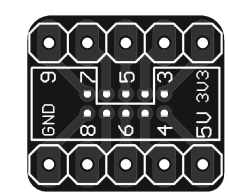
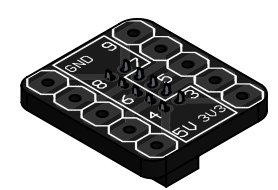
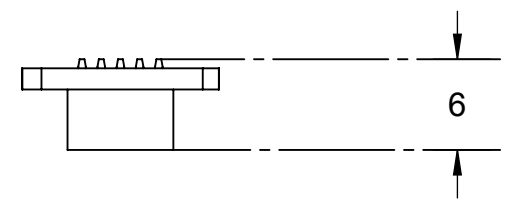
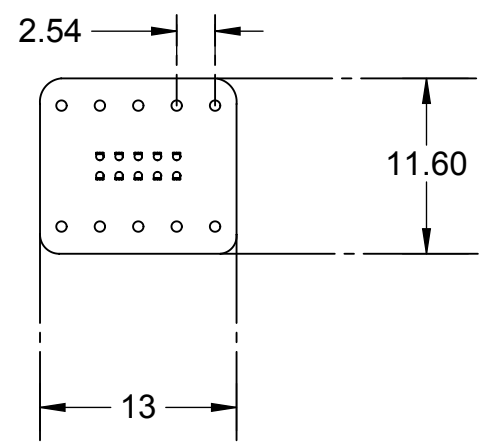
C

B

B

A

A



ENGINEERING NOTES:

SCREW HOLE DIAMETERS ARE 3.2MM, COMPLIANT WITH THE GADETEER STANDARD.
 HOLE SPACING IS BASED ON A 5MM GRID
 ALL DIMENSIONS ARE ± 0.5MM.

G Plug Module

GHI ELECTRONICS LLC

November 7, 2013

www.ghielectronics.com

SCALE	DIM	REV	SHEET
2:1	MM	1.0	1 of 1

8 7 6 5 4 3 2 1