

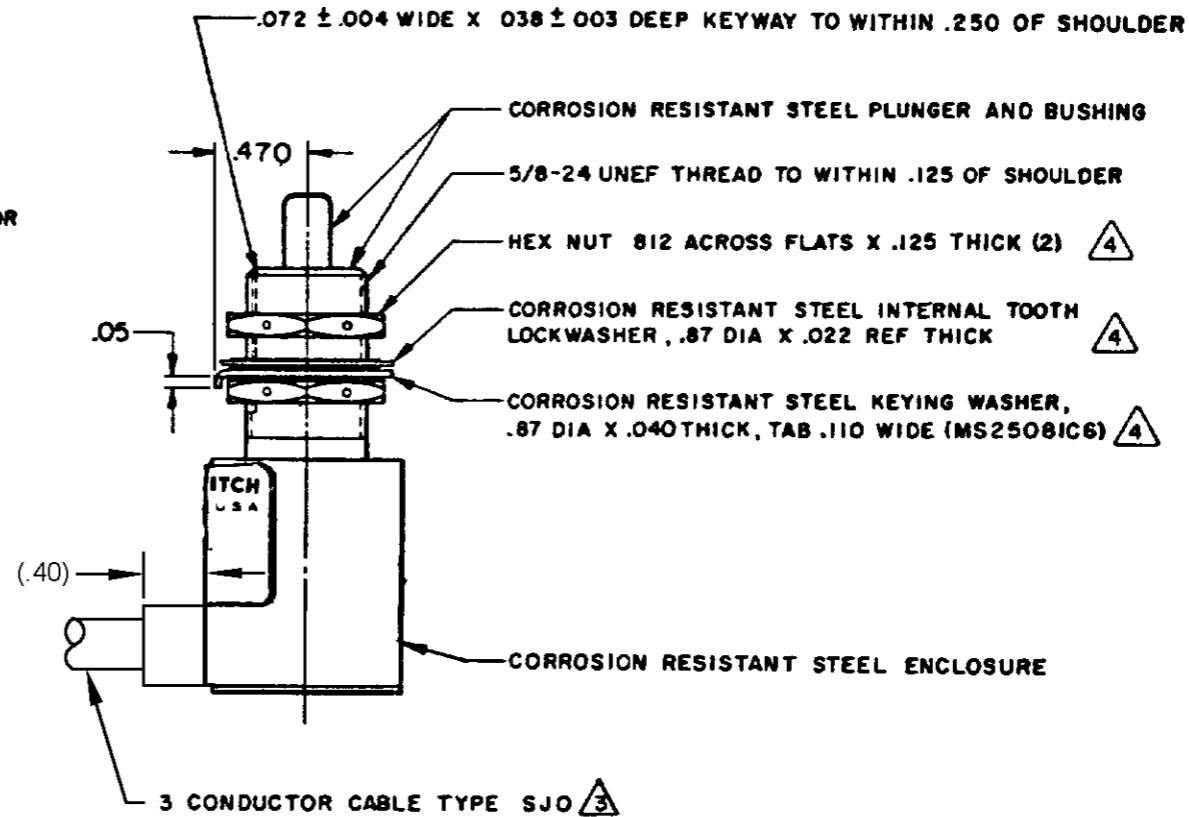
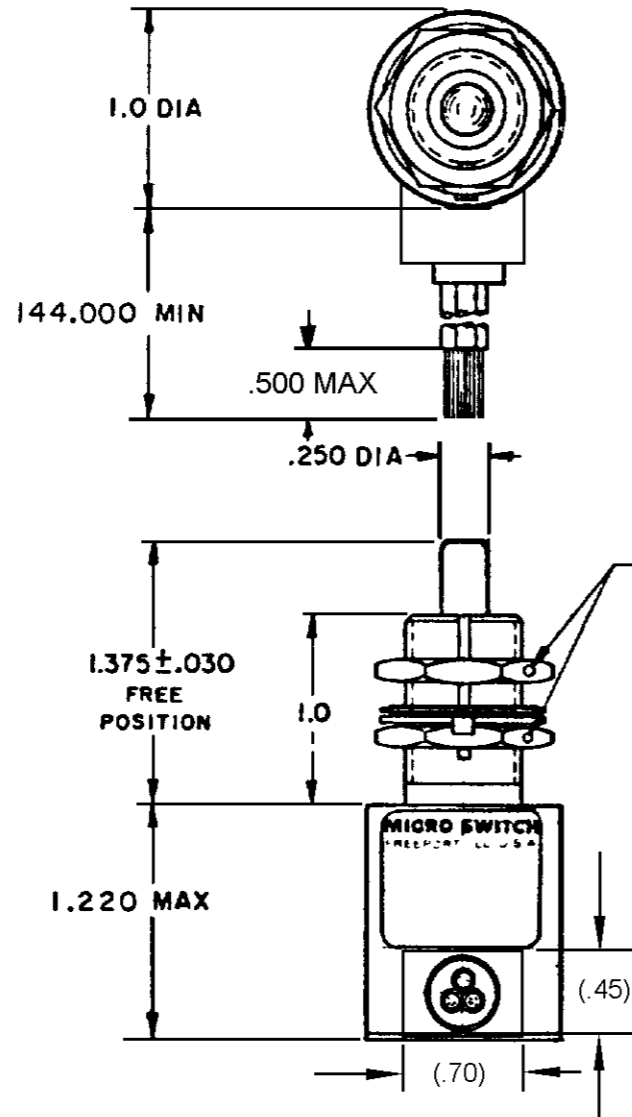
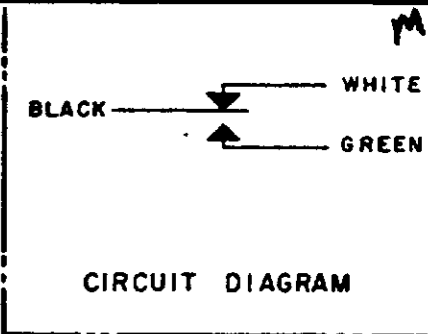
**MICRO SWITCH**

FREEPORT ILLINOIS U.S.A.  
A DIVISION OF HONEYWELL

FED. MFG. CODE 91929

**SWITCH-ENCLOSED**

CATALOG LISTING  
**1CH28-12**



M 1CH28-12  
 DRAWING NUMBER  
 ISSUE 6  
 RJ 27OCT05  
 CHECK 05APR05  
 AK 14 MAR 89  
 TSK  
 WJM 13 MAR 89  
 DRAWN  
 RASTER  
 FO-52851-B

REVISIONS

A	PR17175	WJM	13 MAR 89
B	C074101	LJF	2 FEB 93
C	CO	7700A	848
D	0012074	KSR	05 APR 05
E	0016449	KSR	27 OCT 05

THIS DRAWING COVERS A PROPRIETARY ITEM AND IS THE PROPERTY OF MICRO SWITCH A DIVISION OF MINNEAPOLIS-HONEYWELL REGULATOR CO. THIS DRAWING IS NOT TO BE COPIED OR USED WITHOUT THE APPROVAL OF MICRO SWITCH.

CHARACTERISTICS		ELECTRICAL DATA		SCALE FULL
OPERATING FORCE	6 - 12 LB	CONTACT ARRANGEMENT		DO NOT SCALE PRINT
FULL OVERTRAVEL FORCE	30 LB MAX	S P D T		UNLESS OTHERWISE SPECIFIED
RELEASE FORCE	4 LB MIN			DIMENSIONS ARE IN INCHES
PRETRAVEL	.040 MAX			<b>TOLERANCES ARE</b>
DIFFERENTIAL TRAVEL	.020 MAX			ONE PLACE (.0)
OVERTRAVEL	.250 MIN			TWO PLACE (.00)
				THREE PLACE (.000)
				ANGLES 2
				WEIGHT 18 OZ MAX

**NOTES**

- SWITCH SEALED PER MIL-PRF-8805 SYMBOL 3
  - CIRCUIT DIAGRAM, CATALOG LISTING AND DATE CODE ARE SHOWN ON NAMEPLATE
- WIRE LEADS COLOR CODED TO SHOW LEAD IDENTIFICATION  
HARDWARE MAY BE PACKAGED UNASSEMBLED PER MIL-PRF-8805