

**LC SIMPLEX PC SINGLEMODE ADAPTOR
METALLIC ALIGNMENT SLEEVE**
Packaging
100

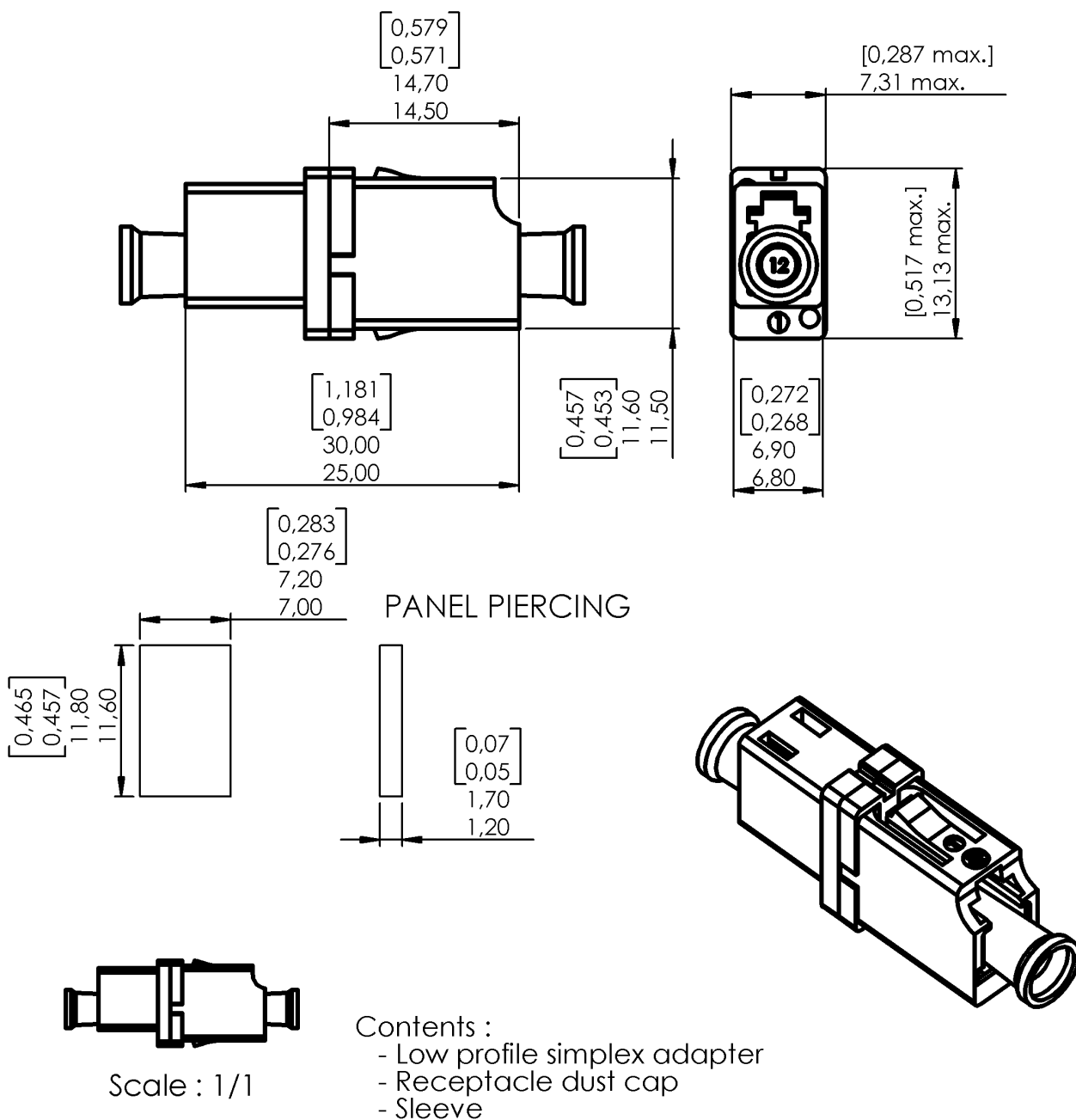
Series
LC

Issue
03 24 04


Page
1 / 2

Adaptor : color BLUE

Simplex



Original dimensions in mm [inch]

	TECHNICAL DATA SHEET		F727.711.200		
LC SIMPLEX PC SINGLEMODE ADAPTOR METALLIC ALIGNMENT SLEEVE		Packaging 100	Series LC	Issue 03 24 04	Page 2 / 2
Adaptor : color BLUE		Simplex			
<div>GENERAL</div> <div><div><input type="checkbox"/> TYPE</div><div>IEC 61754-20 (LC) RJ-45 latching system Receptacle color : BLUE</div></div> <div><div><input type="checkbox"/> MOUNTING</div><div>Snap-in mounting Max. panel thickness 1.7 mm</div></div> <div><div><input type="checkbox"/> ALIGNMENT SLEEVE</div><div>Metallic</div></div> <div>CHARACTERISTICS (Depending on fibre or cable construction)</div> <div><div><div><input type="checkbox"/> MATERIAL</div><div>Plastic molded :</div><div>Material in accordance with TELCORDIA GR-326 CORE Inflammability V0 (UL 94)</div></div><div><div><input type="checkbox"/> MECHANICAL</div><div>Durability Plug Retention</div><div>200 cycles 68 N</div></div><div><div><input type="checkbox"/> ENVIRONMENTAL</div><div>Storage temperature range Operating temperature range</div><div>-40 °C to +85 °C -40 °C to +70 °C</div></div><div><div><input type="checkbox"/> PROOF TEST</div><div>Straight pull Side pull</div><div>68 N 23 N</div></div><div><div><input type="checkbox"/> VIBRATION TEST</div><div>10 to 55 Hz, 1,5 mm (peak to peak), 2 Hr/axis</div></div></div> <div>(Performance and specification : see document GEN - F727 001)</div>					