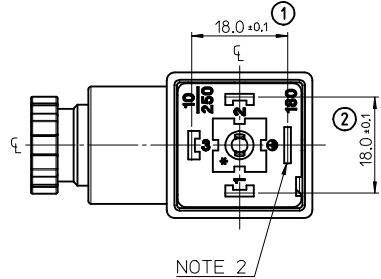
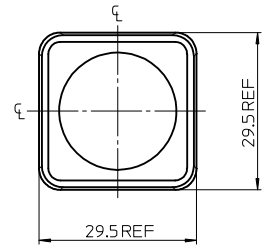
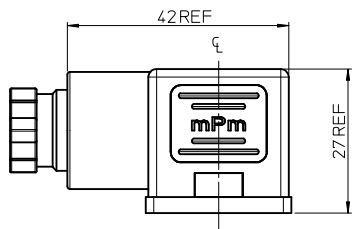
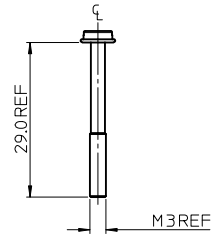


| ITEM | DESCRIPTION |
|------|-----------------|
| 1 | SCREW |
| 2 | COVER ASSEMBLY |
| 3 | INSERT ASSEMBLY |
| 4 | GASKET |

C18209N21**



SERIES _____
 C18= INTERNAL THREAD FORM A
 POLES _____
 2= 2 POLE & 3= 3 POLE
 THREAD SIZE _____
 09= PG9, 11= PG11, M6= M16x1.5, M0= M20x1.5, 12= 1/2" GAS, 13= 1/2" NPTF
 39= PG9 W/STRAIN RELIEF, 41= PG11 W/STRAIN RELIEF
 MATERIAL AND HOUSING COLOUR _____
 G = PA6 GRAY, H= PA6 HEAT PROTECTION,
 N= PA6 BLACK, W= PA66 BLACK V0, T= TRANSPARENT
 GROUND POSITION _____
 0= UNMOUNTED, 2= H12, 3= H3, 6= H6 & 9= H9

SCREW AND GASKET _____
 1= NBR PROFILE GASKET & SCREW
 2= NBR FLAT GASKET & SCREW
 3= WHITE SILICONE PROFILE GASKET & SCREW
 4= WHITE SILICONE FLAT GASKET & SCREW
 5= NBR PROFILE GASKET, NO SCREW
 9= NO GASKET, NO SCREW
 0= NO GASKET, NO SCREW
 A= NBR PROFILE GASKET & SCREW +2mm
 B= NBR FLAT GASKET & SCREW +2mm
 C= WHITE SILICONE PROFILE GASKET & SCREW +2mm
 G= NO GASKET & STANDARD SCREW
 I= BULK PACK FULLY MOUNTED, NO GASKET
 P= INTEGRATED NBR GASKET & IP67 SCREW ASSEMBLED
 R= INTEGRATED NBR GASKET & IP67 SCREW NOT ASSEMBLED


NON STANDARD COMPONENTS
 14= SINGLE BAG
 19= PIN NO.3 NON CONNECTED/REMOVED,
 23= ASSEMBLED SCREWS & GASKET
 10= SPECIAL GROMMET
 4S= SPECIAL GROMMET
 5A= SINGLE BAGGED 500 IN A BOX
 9V= NO SCREW OR GASKET
 AF= CENTRE SCREW MOUNTED
 BM= GOLD TERMINALS
 BS= FULLY UNMOUNTED ALL COMPONENTS IN SEPARATE BAGS
 OH= INOX SCREW
 P7= IP67 COMPLIANT
 SA= UL LISTED PART

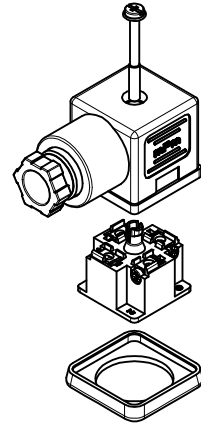
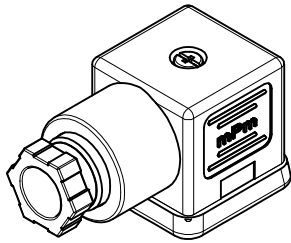
NOTES
 1. PLEASE SEE SHEET 2 FOR CURRENTLY CONFIGURED PART NUMBERS, FOR SPECIFIC PART NUMBERS PLEASE CONTACT SALES OR CONSULT THE INTELLIGENT PART NUMBERS IN THE TABLE ATTACHED
 2. EARTH POSITION SHOWN, H12.
 3. FOR PACKAGING SEE PACKAGING SPEC PK-121023-C18
 4. PRODUCT SPEC: SEE PS-121201-001
 LAST INSPECTION NUMBER 2

| ADDED P/N EC NO: IFC2016-0551 DRWN: JBYRNES 2015/10/09 CHKD: DSHEA 2015/10/12 APPR: STGERLEIN 2015/11/25 | QUALITY SYMBOLS ▽=0 ▽=0 | GENERAL TOLERANCES (UNLESS SPECIFIED) <table border="1"> <thead> <tr> <th></th> <th>mm</th> <th>INCH</th> </tr> </thead> <tbody> <tr> <td>4 PLACES</td> <td>±---</td> <td>±---</td> </tr> <tr> <td>3 PLACES</td> <td>±---</td> <td>±---</td> </tr> <tr> <td>2 PLACES</td> <td>±0.1</td> <td>±---</td> </tr> <tr> <td>1 PLACE</td> <td>±0.2</td> <td>±---</td> </tr> <tr> <td colspan="3">ANGULAR ±---°</td> </tr> </tbody> </table> | | mm | INCH | 4 PLACES | ±--- | ±--- | 3 PLACES | ±--- | ±--- | 2 PLACES | ±0.1 | ±--- | 1 PLACE | ±0.2 | ±--- | ANGULAR ±---° | | | DIMENSION STYLE MM ONLY | SCALE 1.5:1 | DESIGN UNITS METRIC | THIRD ANGLE PROJECTION |
|--|-------------------------------|--|-------------------------------------|-------------------------------|---------------------|---|------|------|----------|------|------|----------|------|------|---------|------|------|---------------|--|--|----------------------------|----------------|------------------------|------------------------|
| | | mm | INCH | | | | | | | | | | | | | | | | | | | | | |
| 4 PLACES | ±--- | ±--- | | | | | | | | | | | | | | | | | | | | | | |
| 3 PLACES | ±--- | ±--- | | | | | | | | | | | | | | | | | | | | | | |
| 2 PLACES | ±0.1 | ±--- | | | | | | | | | | | | | | | | | | | | | | |
| 1 PLACE | ±0.2 | ±--- | | | | | | | | | | | | | | | | | | | | | | |
| ANGULAR ±---° | | | | | | | | | | | | | | | | | | | | | | | | |
| DESCRIPTION N | DRAWN BY JOCONNOR | DATE 2011/05/04 | TITLE C18 SERIES INTERNAL THREAD | APPROVED BY EFOLAN | DATE 2011/05/24 | MATERIAL NO. SEE SHEET 2 | | | | | | | | | | | | | | | | | | |
| DRAFT WHERE APPLICABLE MUST REMAIN WITHIN DIMENSIONS | | | MOLEX INCORPORATED | DOCUMENT NO. SD-121023-001 | SHEET NO. 1 OF 2 | THIS DRAWING CONTAINS INFORMATION THAT IS PROPRIETARY TO MOLEX INCORPORATED AND SHOULD NOT BE USED WITHOUT WRITTEN PERMISSION | | | | | | | | | | | | | | | | | | |

| 13 | 12 | 11 | 10 | 9 | 8 | 7 | 6 | 5 | 4 | 3 | 2 | 1 |
|------------|--------------|--|----|---|---|---|---|---|---|---|---|---|
| PART No. | mPm PART No. | DESCRIPTION | | | | | | | | | | |
| 1210230229 | C18209G21 | TYPE A 2P PG9 GRAY, NBR PROFILE GASKET & SCREW | | | | | | | | | | |
| 1210230231 | C18209G22 | TYPE A 2P PG9 GRAY, NBR FLAT GASKET & SCREW | | | | | | | | | | |
| 1210230233 | C18209G31 | TYPE A 2P PG9 GRAY, NBR PROFILE GASKET & SCREW | | | | | | | | | | |
| - | - | - | | | | | | | | | | |
| 1210230238 | C18209N21 | TYPE A 2P PG9 BLACK, NBR PROFILE GASKET & SCREW | | | | | | | | | | |
| 1210230242 | C18209N22 | TYPE A 2P PG9 BLACK, NBR FLAT GASKET & SCREW | | | | | | | | | | |
| 1210230244 | C18209N23 | TYPE A 2P PG9 BLACK, WHITE SILICONE PROFILE GASKET & SCREW | | | | | | | | | | |
| 1210230245 | C18209N24 | TYPE A 2P PG9 BLACK, WHITE SILICONE FLAT GASKET & SCREW | | | | | | | | | | |
| 1210230246 | C18209N25 | TYPE A 2P PG9 BLACK, NBR PROFILE GASKET, NO SCREW | | | | | | | | | | |
| 1210230249 | C18209N2A | TYPE A 2P PG9 BLACK, NBR PROFILE GASKET & SCREW +2mm | | | | | | | | | | |
| 1210230251 | C18209N31 | TYPE A 2P PG9 BLACK, NBR PROFILE GASKET & SCREW | | | | | | | | | | |
| 1210230252 | C18209N61 | TYPE A 2P PG9 BLACK, NBR PROFILE GASKET & SCREW | | | | | | | | | | |
| 1210230253 | C18209N62 | TYPE A 2P PG9 BLACK, NBR FLAT GASKET & SCREW | | | | | | | | | | |
| 1210230254 | C18209T21 | TYPE A 2P PG9 TRANSPARENT, NBR PROFILE GASKET & SCREW | | | | | | | | | | |
| 1210230271 | C18211G21 | TYPE A 2P PG11 GRAY, NBR PROFILE GASKET & SCREW | | | | | | | | | | |
| 1210230278 | C18211N21 | TYPE A 2P PG11 BLACK, NBR PROFILE GASKET & SCREW | | | | | | | | | | |
| 1210230282 | C18211N23 | TYPE A 2P PG11 BLACK, WHITE SILICONE PROFILE GASKET & SCREW | | | | | | | | | | |
| 1210230283 | C18211N24 | TYPE A 2P PG11 BLACK, WHITE SILICONE FLAT GASKET & SCREW | | | | | | | | | | |
| 1210230284 | C18211N61 | TYPE A 2P PG11 BLACK, NBR PROFILE GASKET & SCREW | | | | | | | | | | |
| 1210230286 | C18211T21 | TYPE A 2P PG11 TRANSPARENT, NBR PROFILE GASKET & SCREW | | | | | | | | | | |
| 1210230291 | C18211W21 | TYPE A 2P PG11 BLACK V0, NBR PROFILE GASKET & SCREW | | | | | | | | | | |
| 1210230305 | C18212N21 | TYPE A 2P 1/2" GAS BLACK, NBR PROFILE GASKET & SCREW | | | | | | | | | | |
| 1210230315 | C18213G21 | TYPE A 2P 1/2" NPTF GRAY, NBR PROFILE GASKET & SCREW | | | | | | | | | | |
| 1210230319 | C18213N21 | TYPE A 2P 1/2" NPTF BLACK, NBR PROFILE GASKET & SCREW | | | | | | | | | | |
| 1210230328 | C18239G21 | TYPE A 2P PG9 W/STRAIN RELIEF GRAY, NBR PROFILE GASKET & SCREW | | | | | | | | | | |
| 1210230331 | C18241N21 | TYPE A 2P PG11 W/STRAIN RELIEF BLACK, NBR PROFILE GASKET & SCREW | | | | | | | | | | |
| 1210230336 | C18309G21 | TYPE A 3P PG9 GRAY, NBR PROFILE GASKET & SCREW | | | | | | | | | | |
| 1210230337 | C18309G22 | TYPE A 3P PG9 GRAY, NBR FLAT GASKET & SCREW | | | | | | | | | | |
| 1210230341 | C18309N21 | TYPE A 3P PG9 BLACK, NBR PROFILE GASKET & SCREW | | | | | | | | | | |
| 1210230345 | C18309N23 | TYPE A 3P PG9 BLACK, WHITE SILICONE PROFILE GASKET & SCREW | | | | | | | | | | |
| 1210230346 | C18309N24 | TYPE A 3P PG9 BLACK, WHITE SILICONE FLAT GASKET & SCREW | | | | | | | | | | |
| 1210230352 | C18309N2G | TYPE A 3P PG9 BLACK, NO GASKET, & STANDARD SCREW | | | | | | | | | | |
| 1210230354 | C18309N61 | TYPE A 3P PG9 BLACK, NBR PROFILE GASKET & SCREW | | | | | | | | | | |
| 1210230356 | C18309N64 | TYPE A 3P PG9 BLACK, WHITE SILICONE FLAT GASKET & SCREW | | | | | | | | | | |
| 1210230358 | C18309T21 | TYPE A 3P PG9 TRANSPARENT, NBR PROFILE GASKET & SCREW | | | | | | | | | | |
| 1210230364 | C18309W21 | TYPE A 3P PG9 BLACK V0, NBR PROFILE GASKET & SCREW | | | | | | | | | | |
| 1210230367 | C18309W23 | TYPE A 3P PG9 BLACK V0, WHITE SILICONE PROFILE GASKET & SCREW | | | | | | | | | | |
| 1210230372 | C18311G21 | TYPE A 3P PG11 GRAY, NBR PROFILE GASKET & SCREW | | | | | | | | | | |
| 1210230373 | C18311G22 | TYPE A 3P PG11 GRAY, NBR FLAT GASKET & SCREW | | | | | | | | | | |
| 1210230374 | C18311G61 | TYPE A 3P PG11 GRAY, NBR PROFILE GASKET & SCREW | | | | | | | | | | |
| 1210230377 | C18311N21 | TYPE A 3P PG11 BLACK, NBR PROFILE GASKET & SCREW | | | | | | | | | | |
| 1210230378 | C18311N22 | TYPE A 3P PG11 BLACK, NBR FLAT GASKET & SCREW | | | | | | | | | | |
| 1210230379 | C18311N31 | TYPE A 3P PG11 BLACK, NBR PROFILE GASKET & SCREW | | | | | | | | | | |
| 1210230382 | C18311N61 | TYPE A 3P PG11 BLACK, NBR PROFILE GASKET & SCREW | | | | | | | | | | |
| 1210230384 | C18311T21 | TYPE A 3P PG11 TRANSPARENT, NBR PROFILE GASKET & SCREW | | | | | | | | | | |
| 1210230388 | C18311W21 | TYPE A 3P PG11 BLACK V0, NBR PROFILE GASKET & SCREW | | | | | | | | | | |
| 1210230400 | C18312N21 | TYPE A 3P 1/2" GAS BLACK, NBR PROFILE GASKET & SCREW | | | | | | | | | | |
| 1210230401 | C18312N22 | TYPE A 3P 1/2" GAS BLACK, NBR FLAT GASKET & SCREW | | | | | | | | | | |
| 1210230410 | C18313G21 | TYPE A 3P 1/2" NPTF GRAY, NBR PROFILE GASKET & SCREW | | | | | | | | | | |
| 1210230414 | C18313N21 | TYPE A 3P 1/2" NPTF BLACK, NBR PROFILE GASKET & SCREW | | | | | | | | | | |
| 1210230415 | C18313N22 | TYPE A 3P 1/2" NPTF BLACK, NBR FLAT GASKET & SCREW | | | | | | | | | | |
| 1210230421 | C18339N23 | TYPE A 3P PG9 W/STRAIN RELIEF BLACK, WHITE SILICONE PROFILE GASKET & SCREW | | | | | | | | | | |
| 1210230422 | C18339N2C | TYPE A 3P PG9 W/STRAIN RELIEF BLACK, WHITE SILICONE PROFILE GASKET, & SCREW +2mm | | | | | | | | | | |
| 1210230645 | C183M6N21 | TYPE A 3P M16x15 BLACK, NBR PROFILE GASKET & SCREW | | | | | | | | | | |
| 1210230656 | C183M6G21 | TYPE A 3P M16x15 GRAY, NBR PROFILE GASKET & SCREW | | | | | | | | | | |
| 1210230660 | C183M0N21 | TYPE A 3P M20x15 BLACK, NBR PROFILE GASKET & SCREW | | | | | | | | | | |
| 1210230662 | C182M0N21 | TYPE A 2P M20x15 BLACK, NBR PROFILE GASKET & SCREW | | | | | | | | | | |
| 1210230677 | C182M6N21 | TYPE A 2P M16x15 BLACK, NBR PROFILE GASKET & SCREW | | | | | | | | | | |
| 1210230704 | C182M6N22 | TYPE A 2P M16x15 BLACK, NBR FLAT GASKET & SCREW | | | | | | | | | | |
| 1210230718 | C182M6G21 | TYPE A 2P M16x15 GRAY, NBR PROFILE GASKET & SCREW | | | | | | | | | | |
| 1210230741 | C183M0N2G | TYPE A 3P M20x15 BLACK, NO GASKET, & STANDARD SCREW | | | | | | | | | | |
| 1210230745 | C18209N21 | TYPE A 2P PG9 BLACK, NBR PROFILE GASKET & SCREW | | | | | | | | | | |
| 1210230763 | C18311W2G | TYPE A 3P PG11 BLACK V0, NO GASKET, & STANDARD SCREW | | | | | | | | | | |
| 1210230768 | C18213T22 | TYPE A 2P 1/2" NPTF TRANSPARENT, NBR FLAT GASKET & SCREW | | | | | | | | | | |
| 1210230780 | C18312N23 | TYPE A 3P 1/2" GAS BLACK, WHITE SILICONE PROFILE GASKET & SCREW | | | | | | | | | | |
| 1210230793 | C18309N2A | TYPE A 3P PG9 BLACK, NBR PROFILE GASKET & SCREW +2mm | | | | | | | | | | |

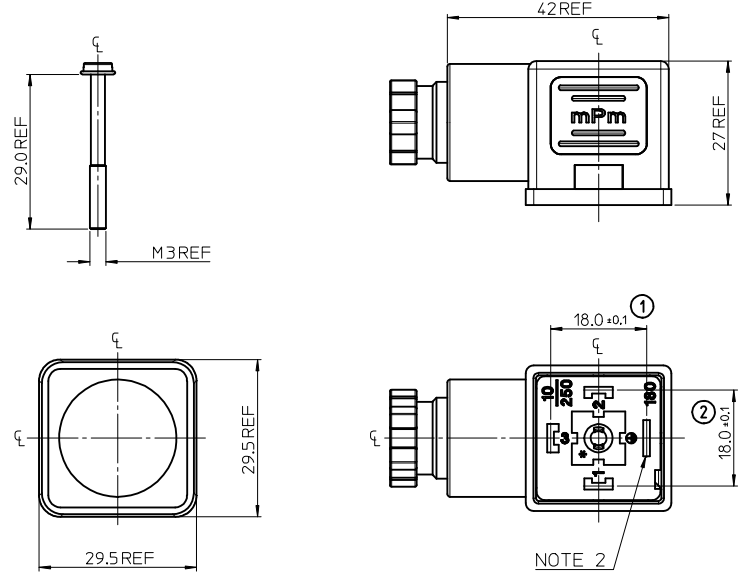
| PART No. | mPm PART No. | DESCRIPTION |
|------------|---------------|--|
| 1210230800 | C18209G2B | TYPE A 2P PG9 GRAY, NBR FLAT GASKET, & SCREW +2mm |
| 1210230803 | C182M0N2A | TYPE A 2P M20x15 BLACK, NBR PROFILE GASKET & SCREW +2mm |
| 1210230804 | C18309N33 | TYPE A 3P PG9 BLACK, WHITE SILICONE PROFILE GASKET & SCREW |
| 1210230807 | C18309N2R | TYPE A 3P PG9 BLACK, INTEGRATED NBR GASKET & IP67 SCREW NOT ASSEMBLED |
| 1210230825 | C182M6N2P | TYPE A 2P M16x15 BLACK, INTEGRATED NBR GASKET & IP67 SCREW ASSEMBLED |
| 1210230833 | C18211G2A | TYPE A 2P PG11 GRAY, NBR PROFILE GASKET & SCREW +2mm |
| 1210230841 | C182M0G21 | TYPE A 2P M20x15 GRAY, NBR PROFILE GASKET & SCREW |
| 1210240268 | C18311N2G | TYPE A 3P PG11 BLACK, NO GASKET, & STANDARD SCREW |
| 1210240370 | C18211N2A | TYPE A 2P PG11 BLACK, NBR PROFILE GASKET & SCREW +2mm |
| 1210240940 | C18209N20 | TYPE A 2P PG9 BLACK, NO GASKET, NO SCREW |
| 1210240133 | C18209N210H | TYPE A 2P PG9 BLACK, NBR PROFILE GASKET, STAINLESS STEEL SCREW |
| 1210240154 | C18209N220H | TYPE A 2P PG9 BLACK, NBR FLAT GASKET, STAINLESS STEEL SCREW |
| 1210240378 | C18311N210H | TYPE A 3P PG11 BLACK, NBR PROFILE GASKET, STAINLESS STEEL SCREW |
| 1210240139 | C18209N2114 | TYPE A 2P PG9 BLACK, NBR PROFILE GASKET & SCREW IN NEUTRAL BAG |
| 1210240156 | C18209N2214 | TYPE A 2P PG9 BLACK, NBR FLAT GASKET & SCREW IN NEUTRAL BAG |
| 1210240224 | C18309N2114 | TYPE A 3P PG9 BLACK, NBR PROFILE GASKET & SCREW IN NEUTRAL BAG |
| 1210240755 | C18309N2R19 | TYPE A 3P PG9 BLACK, INTEGRATED NBR GASKET & IP67 SCREW NOT ASSEMBLED W/O PIN No. 3 |
| 1210240227 | C18309N2110 | TYPE A 3P PG9 BLACK, NBR PROFILE GASKET & SCREW, WITH SPECIAL GROMMET |
| 1210240185 | C18211G2123 | TYPE A 2P PG11 GRAY, NBR PROFILE GASKET & SCREW, FULLY MOUNTED |
| 1210240271 | C18311N614S | TYPE A 3P PG11 BLACK, NBR PROFILE GASKET & SCREW, WITH SPECIAL GROMMET |
| 1210240265 | C18311N215A | TYPE A 3P PG11 BLACK, NBR PROFILE GASKET & SCREW, SINGLE BAGGED, 500 IN A BOX |
| 1210230350 | C18309N299V | TYPE A 3P PG9 BLACK, NO GASKET, NO SCREW |
| 1210240167 | C18209N299V | TYPE A 2P PG9 BLACK, NO GASKET, NO SCREW |
| 1210230232 | C18209G22AF | TYPE A 2P PG9 GRAY, NBR FLAT GASKET WITH SCREW MOUNTED |
| 1210230243 | C18209N22AF | TYPE A 2P PG9 BLACK, NBR FLAT GASKET WITH SCREW MOUNTED |
| 1210230274 | C18211G22AF | TYPE A 2P PG11 GRAY, NBR FLAT GASKET WITH SCREW MOUNTED |
| 1210230281 | C18211N22AF | TYPE A 2P PG11 BLACK, NBR FLAT GASKET WITH SCREW MOUNTED |
| 1210230648 | C18309N31AF | TYPE A 3P PG9 BLACK, NBR PROFILE GASKET WITH SCREW MOUNTED |
| 1210230678 | C183M0N31AF | TYPE A 3P M20x15 BLACK, NBR PROFILE GASKET WITH SCREW MOUNTED |
| 1210230696 | C183M6N21AF | TYPE A 3P M16x15 BLACK, NBR PROFILE GASKET WITH SCREW MOUNTED |
| 1210230751 | C183M6N31AF | TYPE A 3P M16x15 BLACK, NBR PROFILE GASKET WITH SCREW MOUNTED |
| 1210230801 | C183M6N22AF | TYPE A 3P M16x15 BLACK, NBR FLAT GASKET WITH SCREW MOUNTED |
| 1210230767 | C18311N318M | TYPE A 3P PG11 BLACK, NBR PROFILE GASKET & SCREW, WITH GOLD TERMINALS |
| 1210230728 | C18209N21BS | TYPE A 2P PG9 BLACK, NBR PROFILE GASKET & SCREW, FULLY UNMOUNTED |
| 1210230240 | C18209N21P7 | TYPE A 2P PG9 BLACK, NBR PROFILE GASKET & SCREW, IP67 COMPLIANT |
| 1210230272 | C18211G21P7 | TYPE A 2P PG11 GRAY, NBR PROFILE GASKET IP67 COMPLIANT |
| 1210230279 | C18211N21P7 | TYPE A 2P PG11 BLACK, NBR PROFILE GASKET & SCREW, IP67 COMPLIANT |
| 1210230420 | C18309N21P7 | TYPE A 3P PG9 W/STRAIN RELIEF BLACK, NBR PROFILE GASKET & SCREW, IP67 COMPLIANT |
| 1210230725 | C18309N21P7 | TYPE A 3P PG9 BLACK, NBR PROFILE GASKET & SCREW, IP67 COMPLIANT |
| 1210230731 | C18312N21P7 | TYPE A 3P 1/2" GAS BLACK, NBR PROFILE GASKET & SCREW IP67 COMPLIANT |
| 1210230732 | C18209G21P7 | TYPE A 2P PG9 GRAY, NBR PROFILE GASKET & SCREW IP67 COMPLIANT |
| 1210230843 | C183M6N21P7 | TYPE A 3P M16x15 BLACK, NBR PROFILE GASKET & SCREW IP67 COMPLIANT |
| 1210230849 | C18309N21 | TYPE A 3P PG9 BLACK, BULK PACK FULLY MOUNTED, NO GASKET |
| 1210230739 | C18311W21SA | TYPE A 3P PG11 BLACK V0, NBR PROFILE GASKET & SCREW, UL LISTED |
| 1210230851 | C182M6W21SA | TYPE A 2P M16x15 BLACK V0, NBR PROFILE GASKET UL LISTED |
| 1210230853 | C18311N21P7 | TYPE A 3P PG11 BLACK, NBR PROFILE GASKET & SCREW, IP67 COMPLIANT |
| 1210230854 | C18309W2P5A14 | TYPE A 3P PG9 BLACK V0, NBR PROFILE GASKET & SCREW, UL LISTED, IP67 COMPLIANT, SINGLE BAGGED |
| 1210230855 | C183M0W31AFSA | TYPE A 3P M20x15 BLACK V0, NBR PROFILE GASKET WITH SCREW MOUNTED, UL LISTED |
| 1210230657 | C18309W21SA | TYPE A 3P PG9 BLACK V0, NBR PROFILE GASKET & SCREW, UL LISTED |
| 1210230809 | C18211W21SA | TYPE A 2P PG11 BLACK V0, NBR PROFILE GASKET & SCREW, UL LISTED |
| 1210230861 | C18211W23SA | TYPE A 2P PG11 BLACK V0, WHITE SILICONE PROFILE GASKET & SCREW, UL LISTED |
| 1210230344 | C18309N22 | TYPE A 3P PG9 BLACK PA.6, H12, NBR FLAT GASKET & SCREW |
| 1210230862 | C18313T22 | TYPE A 3P 1/2" NPTF TRANSPARENT, NBR FLAT GASKET & SCREW |
| 1210230870 | C18309G21SA | TYPE A 3P PG9 GRAY, NBR PROFILE GASKET & SCREW, UL LISTED |
| 1210230674 | C18209W21SA | TYPE A 2P PG9 BLACK, NBR PROFILE GASKET & SCREW, UL LISTED |

| SEE SHEET ONE EC NO: IPG2016-0551 DRAWN: JBVRNES 2015/10/09 CHKD: ASHEA 2015/10/12 APPR: SUGRIFIN 2015/11/25 | QUALITY SYMBOLS ▽=0 ▽=0 | GENERAL TOLERANCES (UNLESS SPECIFIED) <table border="1"> <tr> <th></th> <th>mm</th> <th>INCH</th> </tr> <tr> <td>4 PLACES</td> <td>±---</td> <td>±---</td> </tr> <tr> <td>3 PLACES</td> <td>±---</td> <td>±---</td> </tr> <tr> <td>2 PLACES</td> <td>±0.1</td> <td>±---</td> </tr> <tr> <td>1 PLACE</td> <td>±0.2</td> <td>±---</td> </tr> </table> | | mm | INCH | 4 PLACES | ±--- | ±--- | 3 PLACES | ±--- | ±--- | 2 PLACES | ±0.1 | ±--- | 1 PLACE | ±0.2 | ±--- | DIMENSION STYLE MM ONLY DRAWN BY: JOCANNOR DATE: 2011/05/04 CHECKED BY: DMAHER DATE: 2011/05/06 APPROVED BY: EFOLAN DATE: 2011/05/24 MATERIAL NO. | SCALE 2:1 DESIGN UNITS METRIC THIRD ANGLE PROJECTION | TITLE C18 SERIES INTERNAL THREAD  MOLEX INCORPORATED DOCUMENT NO. SD-121023-001 | SHEET NO. 2 OF 2 |
|---|-------------------------------|--|------|--|------|----------|------|------|----------|------|------|----------|------|------|---------|------|------|--|--|--|----------------------------|
| | | mm | INCH | | | | | | | | | | | | | | | | | | |
| | 4 PLACES | ±--- | ±--- | | | | | | | | | | | | | | | | | | |
| | 3 PLACES | ±--- | ±--- | | | | | | | | | | | | | | | | | | |
| 2 PLACES | ±0.1 | ±--- | | | | | | | | | | | | | | | | | | | |
| 1 PLACE | ±0.2 | ±--- | | | | | | | | | | | | | | | | | | | |
| DRAFT WHERE APPLICABLE MUST REMAIN WITHIN DIMENSIONS | | SEE CHART | | THIS DRAWING CONTAINS INFORMATION THAT IS PROPRIETARY TO MOLEX INCORPORATED AND SHOULD NOT BE USED WITHOUT WRITTEN PERMISSION | | | | | | | | | | | | | | | | | |



| ITEM | DESCRIPTION |
|------|-----------------|
| 1 | SCREW |
| 2 | COVER ASSEMBLY |
| 3 | INSERT ASSEMBLY |
| 4 | GASKET |

C18209N21**



SERIES _____
 C18= INTERNAL THREAD FORM A
 POLES _____
 2= 2 POLE & 3= 3 POLE
 THREAD SIZE _____
 09= PG9, 11= PG11, M6= M16x1.5, M0= M20x1.5, 12= 1/2" GAS, 13= 1/2" NPTF
 39= PG9 W/STRAIN RELIEF, 41= PG11 W/STRAIN RELIEF
 MATERIAL AND HOUSING COLOUR _____
 G = PA6 GRAY, H= PA6 HEAT PROTECTION,
 N= PA6 BLACK, W= PA66 BLACK V0, T= TRANSPARENT
 GROUND POSITION _____
 0= UNMOUNTED, 2= H12, 3= H3, 6= H6 & 9= H9

SCREW AND GASKET _____
 1= NBR PROFILE GASKET & SCREW
 2= NBR FLAT GASKET & SCREW
 3= WHITE SILICONE PROFILE GASKET & SCREW
 4= WHITE SILICONE FLAT GASKET & SCREW
 5= NBR PROFILE GASKET, NO SCREW
 9= NO GASKET, NO SCREW
 0= NO GASKET, NO SCREW
 A= NBR PROFILE GASKET & SCREW +2mm
 B= NBR FLAT GASKET & SCREW +2mm
 C= WHITE SILICONE PROFILE GASKET & SCREW +2mm
 G= NO GASKET & STANDARD SCREW
 I= BULK PACK FULLY MOUNTED, NO GASKET
 P= INTEGRATED NBR GASKET & IP67 SCREW ASSEMBLED
 R= INTEGRATED NBR GASKET & IP67 SCREW NOT ASSEMBLED

NON STANDARD COMPONENTS
 14= SINGLE BAG
 19= PIN NO.3 NON CONNECTED/REMOVED,
 23= ASSEMBLED SCREWS & GASKET
 10= SPECIAL GROMMET
 4S= SPECIAL GROMMET
 5A= SINGLE BAGGED 500 IN A BOX
 9V= NO SCREW OR GASKET
 AF= CENTRE SCREW MOUNTED
 BM= GOLD TERMINALS
 BS= FULLY UNMOUNTED ALL COMPONENTS IN SEPARATE BAGS
 OH= INOX SCREW
 P7= IP67 COMPLIANT
 SA= UL LISTED PART

NOTES
 1. PLEASE SEE SHEET 2 FOR CURRENTLY CONFIGURED PART NUMBERS, FOR SPECIFIC PART NUMBERS PLEASE CONTACT SALES OR CONSULT THE INTELLIGENT PART NUMBERS IN THE TABLE ATTACHED
 2. EARTH POSITION SHOWN, H12.
 3. FOR PACKAGING SEE PACKAGING SPEC PK-121023-C18
 4. PRODUCT SPEC: SEE PS-121201-001
 LAST INSPECTION NUMBER 2

| ADDED P/N EC NO: IFC2016-0551 DRWN: JBRYNES 2015/10/09 CHKD: DSHEA 2015/10/12 APPR: STGERLEIN 2015/11/25 | QUALITY SYMBOLS ▽=0 ▽=0 | GENERAL TOLERANCES (UNLESS SPECIFIED) <table border="1"> <thead> <tr> <th></th> <th>mm</th> <th>INCH</th> </tr> </thead> <tbody> <tr> <td>4 PLACES</td> <td>±---</td> <td>±---</td> </tr> <tr> <td>3 PLACES</td> <td>±---</td> <td>±---</td> </tr> <tr> <td>2 PLACES</td> <td>±0.1</td> <td>±---</td> </tr> <tr> <td>1 PLACE</td> <td>±0.2</td> <td>±---</td> </tr> <tr> <td colspan="3">ANGULAR ±---°</td> </tr> </tbody> </table> | | mm | INCH | 4 PLACES | ±--- | ±--- | 3 PLACES | ±--- | ±--- | 2 PLACES | ±0.1 | ±--- | 1 PLACE | ±0.2 | ±--- | ANGULAR ±---° | | | DIMENSION STYLE MM ONLY | SCALE 1.5:1 | DESIGN UNITS METRIC | THIRD ANGLE PROJECTION |
|--|--|--|-------------------------------|---------------------|------|----------|------|------|----------|------|------|----------|------|------|---------|------|------|---------------|--|--|----------------------------|----------------|------------------------|------------------------|
| | | mm | INCH | | | | | | | | | | | | | | | | | | | | | |
| 4 PLACES | ±--- | ±--- | | | | | | | | | | | | | | | | | | | | | | |
| 3 PLACES | ±--- | ±--- | | | | | | | | | | | | | | | | | | | | | | |
| 2 PLACES | ±0.1 | ±--- | | | | | | | | | | | | | | | | | | | | | | |
| 1 PLACE | ±0.2 | ±--- | | | | | | | | | | | | | | | | | | | | | | |
| ANGULAR ±---° | | | | | | | | | | | | | | | | | | | | | | | | |
| DRAWN BY JOCONNOR 2011/05/04 CHECKED BY DMAHER 2011/05/06 APPROVED BY EFOLAN 2011/05/24 | TITLE C18 SERIES INTERNAL THREAD | MATERIAL NO. SEE SHEET 2 | DOCUMENT NO. SD-121023-001 | SHEET NO. 1 OF 2 | | | | | | | | | | | | | | | | | | | | |

DRAFT WHERE APPLICABLE MUST REMAIN WITHIN DIMENSIONS
 THIS DRAWING CONTAINS INFORMATION THAT IS PROPRIETARY TO MOLEX INCORPORATED AND SHOULD NOT BE USED WITHOUT WRITTEN PERMISSION

| 13 | 12 | 11 | 10 | 9 | 8 | 7 | 6 | 5 | 4 | 3 | 2 | 1 |
|------------|--------------|--|----|---|---|---|---|---|---|---|---|---|
| PART No. | mPm PART No. | DESCRIPTION | | | | | | | | | | |
| 1210230229 | C18209G21 | TYPE A 2P PG9 GRAY, NBR PROFILE GASKET & SCREW | | | | | | | | | | |
| 1210230231 | C18209G22 | TYPE A 2P PG9 GRAY, NBR FLAT GASKET & SCREW | | | | | | | | | | |
| 1210230233 | C18209G31 | TYPE A 2P PG9 GRAY, NBR PROFILE GASKET & SCREW | | | | | | | | | | |
| - | - | - | | | | | | | | | | |
| 1210230238 | C18209N21 | TYPE A 2P PG9 BLACK, NBR PROFILE GASKET & SCREW | | | | | | | | | | |
| 1210230242 | C18209N22 | TYPE A 2P PG9 BLACK, NBR FLAT GASKET & SCREW | | | | | | | | | | |
| 1210230244 | C18209N23 | TYPE A 2P PG9 BLACK, WHITE SILICONE PROFILE GASKET & SCREW | | | | | | | | | | |
| 1210230245 | C18209N24 | TYPE A 2P PG9 BLACK, WHITE SILICONE FLAT GASKET & SCREW | | | | | | | | | | |
| 1210230246 | C18209N25 | TYPE A 2P PG9 BLACK, NBR PROFILE GASKET, NO SCREW | | | | | | | | | | |
| 1210230249 | C18209N2A | TYPE A 2P PG9 BLACK, NBR PROFILE GASKET & SCREW +2mm | | | | | | | | | | |
| 1210230251 | C18209N31 | TYPE A 2P PG9 BLACK, NBR PROFILE GASKET & SCREW | | | | | | | | | | |
| 1210230252 | C18209N61 | TYPE A 2P PG9 BLACK, NBR PROFILE GASKET & SCREW | | | | | | | | | | |
| 1210230253 | C18209N62 | TYPE A 2P PG9 BLACK, NBR FLAT GASKET & SCREW | | | | | | | | | | |
| 1210230254 | C18209T21 | TYPE A 2P PG9 TRANSPARENT, NBR PROFILE GASKET & SCREW | | | | | | | | | | |
| 1210230271 | C18211G21 | TYPE A 2P PG11 GRAY, NBR PROFILE GASKET & SCREW | | | | | | | | | | |
| 1210230278 | C18211N21 | TYPE A 2P PG11 BLACK, NBR PROFILE GASKET & SCREW | | | | | | | | | | |
| 1210230282 | C18211N23 | TYPE A 2P PG11 BLACK, WHITE SILICONE PROFILE GASKET & SCREW | | | | | | | | | | |
| 1210230283 | C18211N24 | TYPE A 2P PG11 BLACK, WHITE SILICONE FLAT GASKET & SCREW | | | | | | | | | | |
| 1210230284 | C18211N61 | TYPE A 2P PG11 BLACK, NBR PROFILE GASKET & SCREW | | | | | | | | | | |
| 1210230286 | C18211T21 | TYPE A 2P PG11 TRANSPARENT, NBR PROFILE GASKET & SCREW | | | | | | | | | | |
| 1210230291 | C18211W21 | TYPE A 2P PG11 BLACK V0, NBR PROFILE GASKET & SCREW | | | | | | | | | | |
| 1210230305 | C18212N21 | TYPE A 2P 1/2" GAS BLACK, NBR PROFILE GASKET & SCREW | | | | | | | | | | |
| 1210230315 | C18213G21 | TYPE A 2P 1/2" NPTF GRAY, NBR PROFILE GASKET & SCREW | | | | | | | | | | |
| 1210230319 | C18213N21 | TYPE A 2P 1/2" NPTF BLACK, NBR PROFILE GASKET & SCREW | | | | | | | | | | |
| 1210230328 | C18239G21 | TYPE A 2P PG9 W/STRAIN RELIEF GRAY, NBR PROFILE GASKET & SCREW | | | | | | | | | | |
| 1210230331 | C18241N21 | TYPE A 2P PG11 W/STRAIN RELIEF BLACK, NBR PROFILE GASKET & SCREW | | | | | | | | | | |
| 1210230336 | C18309G21 | TYPE A 3P PG9 GRAY, NBR PROFILE GASKET & SCREW | | | | | | | | | | |
| 1210230337 | C18309G22 | TYPE A 3P PG9 GRAY, NBR FLAT GASKET & SCREW | | | | | | | | | | |
| 1210230341 | C18309N21 | TYPE A 3P PG9 BLACK, NBR PROFILE GASKET & SCREW | | | | | | | | | | |
| 1210230345 | C18309N23 | TYPE A 3P PG9 BLACK, WHITE SILICONE PROFILE GASKET & SCREW | | | | | | | | | | |
| 1210230346 | C18309N24 | TYPE A 3P PG9 BLACK, WHITE SILICONE FLAT GASKET & SCREW | | | | | | | | | | |
| 1210230352 | C18309N2G | TYPE A 3P PG9 BLACK, NO GASKET, & STANDARD SCREW | | | | | | | | | | |
| 1210230354 | C18309N61 | TYPE A 3P PG9 BLACK, NBR PROFILE GASKET & SCREW | | | | | | | | | | |
| 1210230356 | C18309N64 | TYPE A 3P PG9 BLACK, WHITE SILICONE FLAT GASKET & SCREW | | | | | | | | | | |
| 1210230358 | C18309T21 | TYPE A 3P PG9 TRANSPARENT, NBR PROFILE GASKET & SCREW | | | | | | | | | | |
| 1210230364 | C18309W21 | TYPE A 3P PG9 BLACK V0, NBR PROFILE GASKET & SCREW | | | | | | | | | | |
| 1210230367 | C18309W23 | TYPE A 3P PG9 BLACK V0, WHITE SILICONE PROFILE GASKET & SCREW | | | | | | | | | | |
| 1210230372 | C18311G21 | TYPE A 3P PG11 GRAY, NBR PROFILE GASKET & SCREW | | | | | | | | | | |
| 1210230373 | C18311G22 | TYPE A 3P PG11 GRAY, NBR FLAT GASKET & SCREW | | | | | | | | | | |
| 1210230374 | C18311G61 | TYPE A 3P PG11 GRAY, NBR PROFILE GASKET & SCREW | | | | | | | | | | |
| 1210230377 | C18311N21 | TYPE A 3P PG11 BLACK, NBR PROFILE GASKET & SCREW | | | | | | | | | | |
| 1210230378 | C18311N22 | TYPE A 3P PG11 BLACK, NBR FLAT GASKET & SCREW | | | | | | | | | | |
| 1210230379 | C18311N31 | TYPE A 3P PG11 BLACK, NBR PROFILE GASKET & SCREW | | | | | | | | | | |
| 1210230382 | C18311N61 | TYPE A 3P PG11 BLACK, NBR PROFILE GASKET & SCREW | | | | | | | | | | |
| 1210230384 | C18311T21 | TYPE A 3P PG11 TRANSPARENT, NBR PROFILE GASKET & SCREW | | | | | | | | | | |
| 1210230388 | C18311W21 | TYPE A 3P PG11 BLACK V0, NBR PROFILE GASKET & SCREW | | | | | | | | | | |
| 1210230400 | C18312N21 | TYPE A 3P 1/2" GAS BLACK, NBR PROFILE GASKET & SCREW | | | | | | | | | | |
| 1210230401 | C18312N22 | TYPE A 3P 1/2" GAS BLACK, NBR FLAT GASKET & SCREW | | | | | | | | | | |
| 1210230410 | C18313G21 | TYPE A 3P 1/2" NPTF GRAY, NBR PROFILE GASKET & SCREW | | | | | | | | | | |
| 1210230414 | C18313N21 | TYPE A 3P 1/2" NPTF BLACK, NBR PROFILE GASKET & SCREW | | | | | | | | | | |
| 1210230415 | C18313N22 | TYPE A 3P 1/2" NPTF BLACK, NBR FLAT GASKET & SCREW | | | | | | | | | | |
| 1210230421 | C18339N23 | TYPE A 3P PG9 W/STRAIN RELIEF BLACK, WHITE SILICONE PROFILE GASKET & SCREW | | | | | | | | | | |
| 1210230422 | C18339N2C | TYPE A 3P PG9 W/STRAIN RELIEF BLACK, WHITE SILICONE PROFILE GASKET, & SCREW +2mm | | | | | | | | | | |
| 1210230645 | C183M6N21 | TYPE A 3P M16x15 BLACK, NBR PROFILE GASKET & SCREW | | | | | | | | | | |
| 1210230656 | C183M6G21 | TYPE A 3P M16x15 GRAY, NBR PROFILE GASKET & SCREW | | | | | | | | | | |
| 1210230660 | C183M0N21 | TYPE A 3P M20x15 BLACK, NBR PROFILE GASKET & SCREW | | | | | | | | | | |
| 1210230662 | C182M0N21 | TYPE A 2P M20x15 BLACK, NBR PROFILE GASKET & SCREW | | | | | | | | | | |
| 1210230677 | C182M6N21 | TYPE A 2P M16x15 BLACK, NBR PROFILE GASKET & SCREW | | | | | | | | | | |
| 1210230704 | C182M6N22 | TYPE A 2P M16x15 BLACK, NBR FLAT GASKET & SCREW | | | | | | | | | | |
| 1210230718 | C182M6G21 | TYPE A 2P M16x15 GRAY, NBR PROFILE GASKET & SCREW | | | | | | | | | | |
| 1210230741 | C183M0N22 | TYPE A 3P M20x15 BLACK, NO GASKET, & STANDARD SCREW | | | | | | | | | | |
| 1210230745 | C18209N21 | TYPE A 2P PG9 BLACK, NBR PROFILE GASKET & SCREW | | | | | | | | | | |
| 1210230763 | C18311W2G | TYPE A 3P PG11 BLACK V0, NO GASKET, & STANDARD SCREW | | | | | | | | | | |
| 1210230768 | C18213T22 | TYPE A 2P 1/2" NPTF TRANSPARENT, NBR FLAT GASKET & SCREW | | | | | | | | | | |
| 1210230780 | C18312N23 | TYPE A 3P 1/2" GAS BLACK, WHITE SILICONE PROFILE GASKET & SCREW | | | | | | | | | | |
| 1210230793 | C18309N2A | TYPE A 3P PG9 BLACK, NBR PROFILE GASKET & SCREW +2mm | | | | | | | | | | |

| PART No. | mPm PART No. | DESCRIPTION |
|------------|---------------|--|
| 1210230800 | C18209G2B | TYPE A 2P PG9 GRAY, NBR FLAT GASKET, & SCREW +2mm |
| 1210230803 | C182M0N2A | TYPE A 2P M20x15 BLACK, NBR PROFILE GASKET & SCREW +2mm |
| 1210230804 | C18309N33 | TYPE A 3P PG9 BLACK, WHITE SILICONE PROFILE GASKET & SCREW |
| 1210230807 | C18309N2R | TYPE A 3P PG9 BLACK, INTEGRATED NBR GASKET & IP67 SCREW NOT ASSEMBLED |
| 1210230825 | C182M6N2P | TYPE A 2P M16x15 BLACK, INTEGRATED NBR GASKET & IP67 SCREW ASSEMBLED |
| 1210230833 | C18211G2A | TYPE A 2P PG11 GRAY, NBR PROFILE GASKET & SCREW +2mm |
| 1210230841 | C182M0G21 | TYPE A 2P M20x15 GRAY, NBR PROFILE GASKET & SCREW |
| 1210240268 | C18311N2G | TYPE A 3P PG11 BLACK, NO GASKET, & STANDARD SCREW |
| 1210240370 | C18211N2A | TYPE A 2P PG11 BLACK, NBR PROFILE GASKET & SCREW +2mm |
| 1210240940 | C18209N20 | TYPE A 2P PG9 BLACK, NO GASKET, NO SCREW |
| 1210240133 | C18209N210H | TYPE A 2P PG9 BLACK, NBR PROFILE GASKET, STAINLESS STEEL SCREW |
| 1210240154 | C18209N220H | TYPE A 2P PG9 BLACK, NBR FLAT GASKET, STAINLESS STEEL SCREW |
| 1210240378 | C18311N210H | TYPE A 3P PG11 BLACK, NBR PROFILE GASKET, STAINLESS STEEL SCREW |
| 1210240139 | C18209N2114 | TYPE A 2P PG9 BLACK, NBR PROFILE GASKET & SCREW IN NEUTRAL BAG |
| 1210240156 | C18209N2214 | TYPE A 2P PG9 BLACK, NBR FLAT GASKET & SCREW IN NEUTRAL BAG |
| 1210240224 | C18309N2114 | TYPE A 3P PG9 BLACK, NBR PROFILE GASKET & SCREW IN NEUTRAL BAG |
| 1210240755 | C18309N2R19 | TYPE A 3P PG9 BLACK, INTEGRATED NBR GASKET & IP67 SCREW NOT ASSEMBLED W/O PIN No. 3 |
| 1210240227 | C18309N2110 | TYPE A 3P PG9 BLACK, NBR PROFILE GASKET & SCREW, WITH SPECIAL GROMMET |
| 1210240185 | C18211G2123 | TYPE A 2P PG11 GRAY, NBR PROFILE GASKET & SCREW, FULLY MOUNTED |
| 1210240271 | C18311N614S | TYPE A 3P PG11 BLACK, NBR PROFILE GASKET & SCREW, WITH SPECIAL GROMMET |
| 1210240265 | C18311N215A | TYPE A 3P PG11 BLACK, NBR PROFILE GASKET & SCREW, SINGLE BAGGED, 500 IN A BOX |
| 1210230350 | C18309N299V | TYPE A 3P PG9 BLACK, NO GASKET, NO SCREW |
| 1210240167 | C18209N299V | TYPE A 2P PG9 BLACK, NO GASKET, NO SCREW |
| 1210230232 | C18209G22AF | TYPE A 2P PG9 GRAY, NBR FLAT GASKET WITH SCREW MOUNTED |
| 1210230243 | C18209N22AF | TYPE A 2P PG9 BLACK, NBR FLAT GASKET WITH SCREW MOUNTED |
| 1210230274 | C18211G22AF | TYPE A 2P PG11 GRAY, NBR FLAT GASKET WITH SCREW MOUNTED |
| 1210230281 | C18211N22AF | TYPE A 2P PG11 BLACK, NBR FLAT GASKET WITH SCREW MOUNTED |
| 1210230648 | C18309N31AF | TYPE A 3P PG9 BLACK, NBR PROFILE GASKET WITH SCREW MOUNTED |
| 1210230678 | C183M0N31AF | TYPE A 3P M20x15 BLACK, NBR PROFILE GASKET WITH SCREW MOUNTED |
| 1210230696 | C183M6N21AF | TYPE A 3P M16x15 BLACK, NBR PROFILE GASKET WITH SCREW MOUNTED |
| 1210230751 | C183M6N31AF | TYPE A 3P M16x15 BLACK, NBR PROFILE GASKET WITH SCREW MOUNTED |
| 1210230801 | C183M6N22AF | TYPE A 3P M16x15 BLACK, NBR FLAT GASKET WITH SCREW MOUNTED |
| 1210230767 | C18311N318M | TYPE A 3P PG11 BLACK, NBR PROFILE GASKET & SCREW, WITH GOLD TERMINALS |
| 1210230728 | C18209N21BS | TYPE A 2P PG9 BLACK, NBR PROFILE GASKET & SCREW, FULLY UNMOUNTED |
| 1210230240 | C18209N21P7 | TYPE A 2P PG9 BLACK, NBR PROFILE GASKET & SCREW, IP67 COMPLIANT |
| 1210230272 | C18211G21P7 | TYPE A 2P PG11 GRAY, NBR PROFILE GASKET IP67 COMPLIANT |
| 1210230279 | C18211N21P7 | TYPE A 2P PG11 BLACK, NBR PROFILE GASKET & SCREW, IP67 COMPLIANT |
| 1210230420 | C18309N21P7 | TYPE A 3P PG9 W/STRAIN RELIEF BLACK, NBR PROFILE GASKET & SCREW, IP67 COMPLIANT |
| 1210230725 | C18309N21P7 | TYPE A 3P PG9 BLACK, NBR PROFILE GASKET & SCREW, IP67 COMPLIANT |
| 1210230731 | C18312N21P7 | TYPE A 3P 1/2" GAS BLACK, NBR PROFILE GASKET & SCREW IP67 COMPLIANT |
| 1210230732 | C18209G21P7 | TYPE A 2P PG9 GRAY, NBR PROFILE GASKET & SCREW IP67 COMPLIANT |
| 1210230843 | C183M6N21P7 | TYPE A 3P M16x15 BLACK, NBR PROFILE GASKET & SCREW IP67 COMPLIANT |
| 1210230849 | C18309N21 | TYPE A 3P PG9 BLACK, BULK PACK FULLY MOUNTED, NO GASKET |
| 1210230739 | C18311W21SA | TYPE A 3P PG11 BLACK V0, NBR PROFILE GASKET & SCREW, UL LISTED |
| 1210230851 | C182M6W21SA | TYPE A 2P M16x15 BLACK V0, NBR PROFILE GASKET UL LISTED |
| 1210230853 | C18311N21P7 | TYPE A 3P PG11 BLACK, NBR PROFILE GASKET & SCREW, IP67 COMPLIANT |
| 1210230854 | C18309W2P5A14 | TYPE A 3P PG9 BLACK V0, NBR PROFILE GASKET & SCREW, UL LISTED, IP67 COMPLIANT, SINGLE BAGGED |
| 1210230855 | C183M0W31AFSA | TYPE A 3P M20x15 BLACK V0, NBR PROFILE GASKET WITH SCREW MOUNTED, UL LISTED |
| 1210230657 | C18309W21SA | TYPE A 3P PG9 BLACK V0, NBR PROFILE GASKET & SCREW, UL LISTED |
| 1210230809 | C18211W21SA | TYPE A 2P PG11 BLACK V0, NBR PROFILE GASKET & SCREW, UL LISTED |
| 1210230861 | C18211W23SA | TYPE A 2P PG11 BLACK V0, WHITE SILICONE PROFILE GASKET & SCREW, UL LISTED |
| 1210230344 | C18309N22 | TYPE A 3P PG9 BLACK PA.6, H12, NBR FLAT GASKET & SCREW |
| 1210230862 | C18313T22 | TYPE A 3P 1/2" NPTF TRANSPARENT, NBR FLAT GASKET & SCREW |
| 1210230870 | C18309G21SA | TYPE A 3P PG9 GRAY, NBR PROFILE GASKET & SCREW, UL LISTED |
| 1210230674 | C18209W21SA | TYPE A 2P PG9 BLACK, NBR PROFILE GASKET & SCREW, UL LISTED |

| SEE SHEET ONE EC NO: IPG2016-0551 DRAWN: JBVRNES 2015/10/09 CHKD: ASHEA 2015/10/12 APPR: SUGRFIN 2015/11/25 | QUALITY SYMBOLS ▽=0 ▽=0 | GENERAL TOLERANCES (UNLESS SPECIFIED) <table border="1"> <tr> <th></th> <th>mm</th> <th>INCH</th> </tr> <tr> <td>4 PLACES</td> <td>±---</td> <td>±---</td> </tr> <tr> <td>3 PLACES</td> <td>±---</td> <td>±---</td> </tr> <tr> <td>2 PLACES</td> <td>±0.1</td> <td>±---</td> </tr> <tr> <td>1 PLACE</td> <td>±0.2</td> <td>±---</td> </tr> </table> | | mm | INCH | 4 PLACES | ±--- | ±--- | 3 PLACES | ±--- | ±--- | 2 PLACES | ±0.1 | ±--- | 1 PLACE | ±0.2 | ±--- | DIMENSION STYLE MM ONLY | SCALE 2:1 | DESIGN UNITS METRIC | THIRD ANGLE PROJECTION |
|--|--------------------------------------|--|--|----|------|----------|------|------|----------|------|------|----------|------|------|---------|------|------|-----------------------------------|---------------------|-------------------------------|------------------------|
| | | mm | INCH | | | | | | | | | | | | | | | | | | |
| | 4 PLACES | ±--- | ±--- | | | | | | | | | | | | | | | | | | |
| | 3 PLACES | ±--- | ±--- | | | | | | | | | | | | | | | | | | |
| 2 PLACES | ±0.1 | ±--- | | | | | | | | | | | | | | | | | | | |
| 1 PLACE | ±0.2 | ±--- | | | | | | | | | | | | | | | | | | | |
| DRAWN BY JOCONNOR 2011/05/04 | DATE 2011/05/04 | CHECKED BY DMAHER 2011/05/06 | TITLE C18 SERIES INTERNAL THREAD | | | | | | | | | | | | | | | | | | |
| APPROVED BY EFOLAN 2011/05/24 | DATE 2011/05/24 | MOLEX INCORPORATED | | | | | | | | | | | | | | | | | | | |
| MATERIAL NO. SEE CHART | DOCUMENT NO. SD-121023-001 | SHEET NO. 2 OF 2 | | | | | | | | | | | | | | | | | | | |

DRAFT WHERE APPLICABLE MUST REMAIN WITHIN DIMENSIONS

THIS DRAWING CONTAINS INFORMATION THAT IS PROPRIETARY TO MOLEX INCORPORATED AND SHOULD NOT BE USED WITHOUT WRITTEN PERMISSION