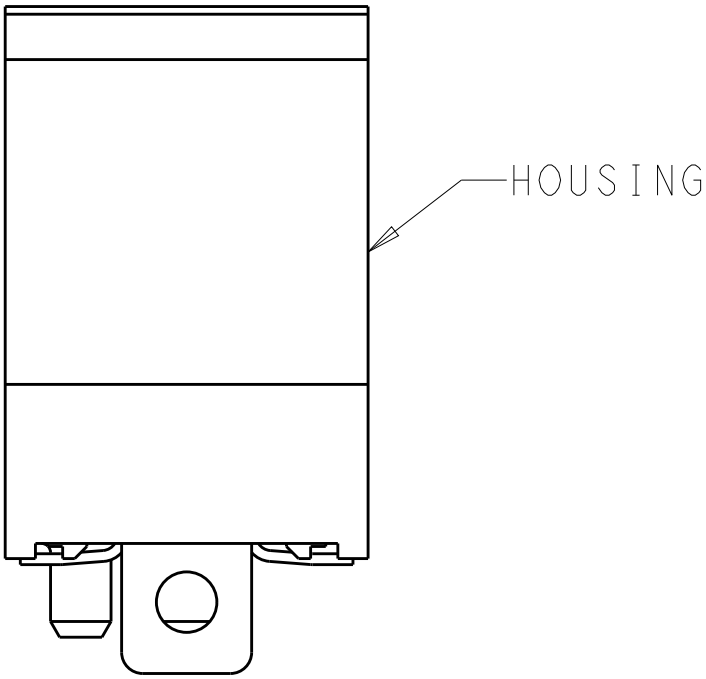


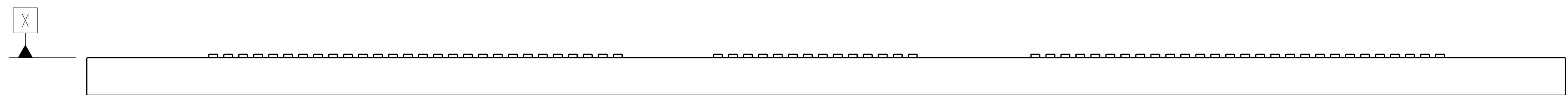
REVISIONS					
P	LTR	DESCRIPTION	DATE	DWN	APVD
	A	RELEASED	11MAY2019	CJV	JW

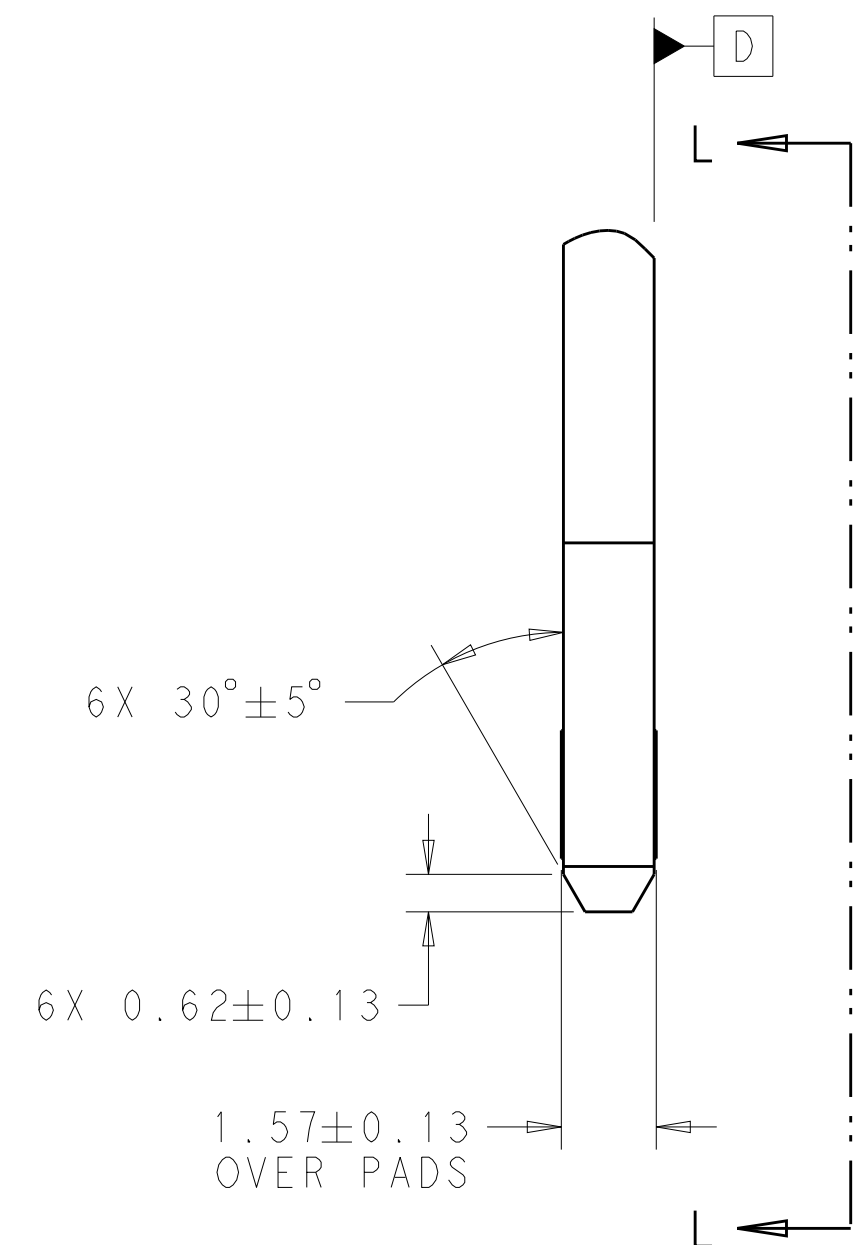
- 1 HOUSING AND CONTACT OVERMOLDS - LCP, UL94-V0. BLACK.
CONTACTS AND HOLD DOWNS - COPPER ALLOY.
PICK AND PLACE TAPE - POLYIMIDE FILM.
- 2 CONTACTS - GOLD PLATE ON MATING SURFACES,
TIN PLATE ON SOLDER FEET.
HOLD DOWNS - TIN PLATE.
- 3 DATUMS AND BASIC DIMENSIONS ESTABLISHED BY CUSTOMER.
4. MINIMUM HOST PCB THICKNESS: 1.5.
- 5 SEE MSA SPECIFICATION FOR ADDITIONAL PADDLE CARD LAYOUTS COMPATIBLE WITH THIS RECEPTACLE AND FOR OPTIONAL SPLIT CONTACT PAD LAYOUTS FOR THE PADDLE CARD. SPECIFICATION PINOUT MAY ALSO DESIGNATE PAD SEQUENCE DIFFERENT FROM ILLUSTRATION.
- 6 POSITIONS DESIGNATED AS "SIGNAL" ARE REQUIRED LOCATIONS FOR HIGH SPEED DIFFERENTIAL PAIR SIGNALING. THESE LOCATIONS MAY ALSO BE USED FOR SUPPORTING SIDEBAND SIGNALS OR OTHER UTILITY PURPOSES. POSITIONS DESIGNATED AS "GROUND" ARE REQUIRED WHEN SUPPORTING HIGH SPEED DIFFERENTIAL SIGNALS. THESE LOCATIONS MAY ALSO BE USED FOR SIDEBAND SIGNALS OR OTHER UTILITY PURPOSES.
- 7 COMPONENT AND TRACE KEEP OUT AREA. EACH EDGE 0.15 MIN FROM EDGE OF HOLE.
- 8 TAPE AND REEL PACKAGED FOR PICK AND PLACE SMT PROCESSING, SEE FIGURE 1. POCKET TAPE WIDTH = 72.



SEE SHEET 4
FOR PART TABLE

THIS DRAWING IS A CONTROLLED DOCUMENT.		DWN C. VALENTINE CHK D. HARMON APVD D. HARMON	16JAN2018 16JAN2018 16JAN2018	TE Connectivity	
DIMENSIONS:		TOLERANCES UNLESS OTHERWISE SPECIFIED:		NAME	
mm		0 PLC ±° 1 PLC ±° 2 PLC ±° 3 PLC ±° 4 PLC ±° ANGLES ±° FINISH		PRODUCT SPEC 108-130021 APPLICATION SPEC 114-130008	
MATERIAL		WEIGHT		SIZE CAGE CODE DRAWING NO	
1		2		A100779C=2327677	
CUSTOMER DRAWING		SCALE		RESTRICTED TO	
		8:1		SHEET 1 OF 4	
				REV A	

4805 (3/13)



CONTACT POINT REFERENCE LINE

(2.58)

0.88±0.13

LEVEL 1 SEQUENCE

140X 3±0.13

(0.1)

1.28±0.13

LEVEL 2 SEQUENCE

SPLIT PADS OPTIONAL

4805 (3/13)

REVISIONS					
P.	LTR.	DESCRIPTION	DATE	DWN.	APVD.
	-	SEE SHEET 1	-	-	-

TABLE 1: CONNECTOR CONTACT IDENTIFICATION  

CONTACT NUMBER	SIDE A	SIDE B
1	GROUND	GROUND
2	SIGNAL	SIGNAL
3	SIGNAL	SIGNAL
4	GROUND	GROUND
5	SIGNAL	SIGNAL
6	SIGNAL	SIGNAL
7	GROUND	GROUND
8	SIGNAL	SIGNAL
9	SIGNAL	SIGNAL
10	GROUND	GROUND
11	SIGNAL	SIGNAL
12	SIGNAL	SIGNAL
13	GROUND	GROUND
14	SIGNAL	SIGNAL
15	SIGNAL	SIGNAL
16	GROUND	GROUND
17	SIGNAL	SIGNAL
18	SIGNAL	SIGNAL
19	GROUND	GROUND
20	SIGNAL	SIGNAL
21	SIGNAL	SIGNAL
22	GROUND	GROUND
23	SIGNAL	SIGNAL
24	SIGNAL	SIGNAL
25	GROUND	GROUND
26	SIGNAL	SIGNAL
27	SIGNAL	SIGNAL
28	GROUND	GROUND
29	GROUND	GROUND
30	SIGNAL	SIGNAL
31	SIGNAL	SIGNAL
32	GROUND	GROUND
33	SIGNAL	SIGNAL
34	SIGNAL	SIGNAL
35	GROUND	GROUND

CONTACT NUMBER	SIDE A	SIDE B
36	SIGNAL	SIGNAL
37	SIGNAL	SIGNAL
38	GROUND	GROUND
39	SIGNAL	SIGNAL
40	SIGNAL	SIGNAL
41	GROUND	GROUND
42	GROUND	GROUND
43	GROUND	GROUND
44	SIGNAL	SIGNAL
45	SIGNAL	SIGNAL
46	GROUND	GROUND
47	SIGNAL	SIGNAL
48	SIGNAL	SIGNAL
49	GROUND	GROUND
50	SIGNAL	SIGNAL
51	SIGNAL	SIGNAL
52	GROUND	GROUND
53	SIGNAL	SIGNAL
54	SIGNAL	SIGNAL
55	GROUND	GROUND
56	SIGNAL	SIGNAL
57	SIGNAL	SIGNAL
58	GROUND	GROUND
59	SIGNAL	SIGNAL
60	SIGNAL	SIGNAL
61	GROUND	GROUND
62	SIGNAL	SIGNAL
63	SIGNAL	SIGNAL
64	GROUND	GROUND
65	SIGNAL	SIGNAL
66	SIGNAL	SIGNAL
67	GROUND	GROUND
68	SIGNAL	SIGNAL
69	SIGNAL	SIGNAL
70	GROUND	GROUND

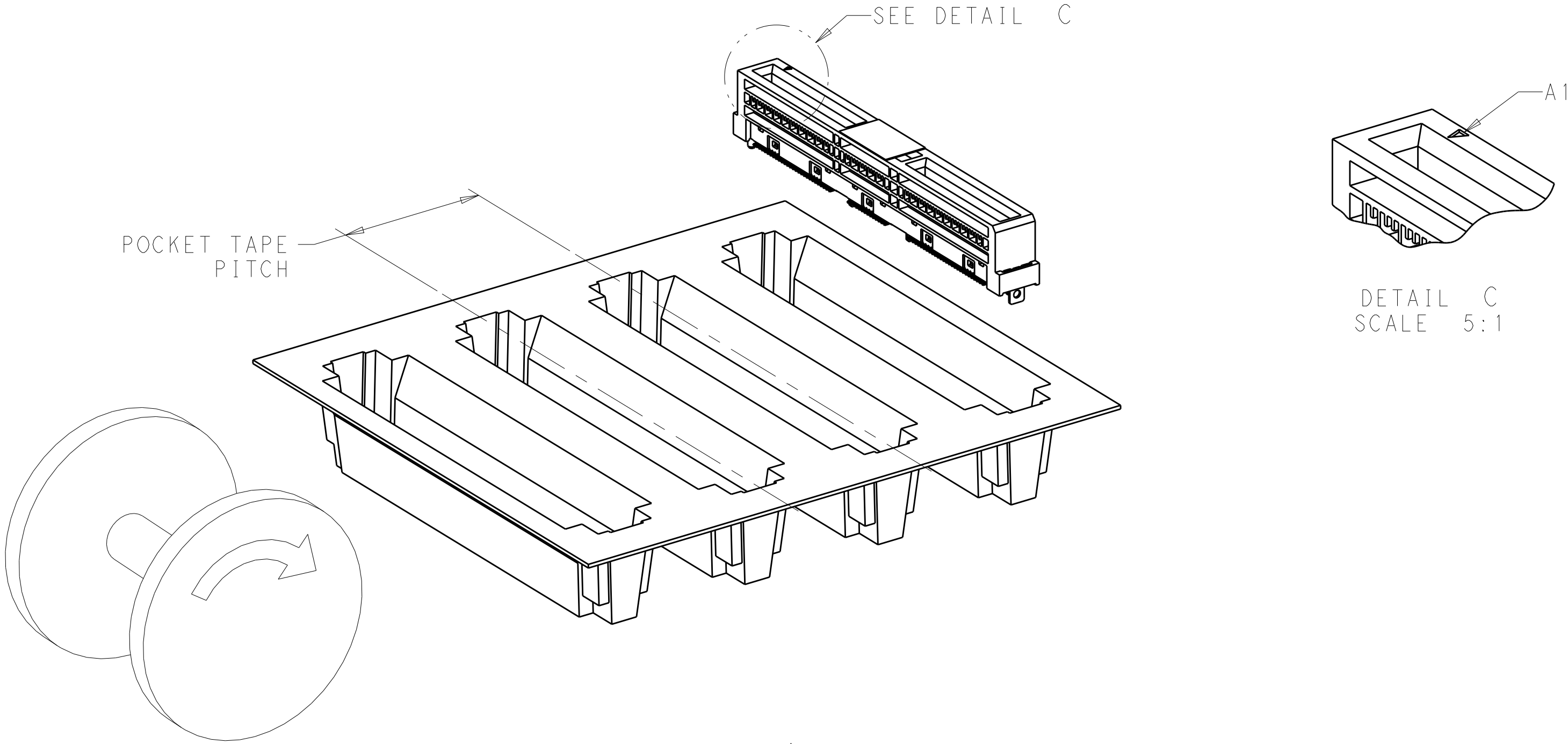


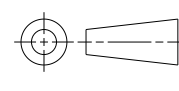


FIGURE 1 
DIRECTION OFF TOP OF REEL
FOR USER UNREELING
SHOWN AS 2327677-1 THRU 2327677-9
SCALE 2:1

1.4 MAX	ENDS	0.76µm Au	24	250	NO	200	1-2327677-9
		0.38µm Au				100	1-2327677-8
		FLASH Au/PdNi				50	1-2327677-7
1.7 MIN	ENDS	0.76µm Au	24	250	NO	200	1-2327677-6
		0.38µm Au				100	1-2327677-5
		FLASH Au/PdNi				50	1-2327677-4
1.7 MIN	ALL	0.76µm Au	24	250	NO	200	1-2327677-3
		0.38µm Au				100	1-2327677-2
		FLASH Au/PdNi				50	1-2327677-1
1.4 MAX	ENDS	0.76µm Au	20	350	YES	200	2327677-9
		0.38µm Au				100	2327677-8
		FLASH Au/PdNi				50	2327677-7
1.7 MIN	ENDS	0.76µm Au	20	350	YES	200	2327677-6
		0.38µm Au				100	2327677-5
		FLASH Au/PdNi				50	2327677-4
1.7 MIN	ALL	0.76µm Au	20	350	YES	200	2327677-3
		0.38µm Au				100	2327677-2
		FLASH Au/PdNi				50	2327677-1
A	HOLD DOWNS	PLATING	POCKET TAPE PITCH	REEL QUANTITY	PICK AND PLACE TAPE	MATING CYCLES	PART NUMBER

THIS DRAWING IS A CONTROLLED DOCUMENT.		DWN C. VALENTINE 16JAN2018	 TE Connectivity	
DIMENSIONS:		CHK D. HARMON 16JAN2018		
mm		APVD D. HARMON 16JAN2018	NAME RECEPTACLE ASSEMBLY, VERTICAL, 140 POSITION, SLIVER 2.0	
		PRODUCT SPEC 108-130021		
TOLERANCES UNLESS OTHERWISE SPECIFIED:		APPLICATION SPEC 114-130008	SIZE CAGE CODE DRAWING NO RESTRICTED TO	
0 PLC ±°		WEIGHT -		
1 PLC ±°		A100779C=2327677		
2 PLC ±°				
3 PLC ±°		CUSTOMER DRAWING		
4 PLC ±°				
ANGLES ±°		SCALE 8:1		
FINISH				
MATERIAL		SHEET 4 OF 4		REV A